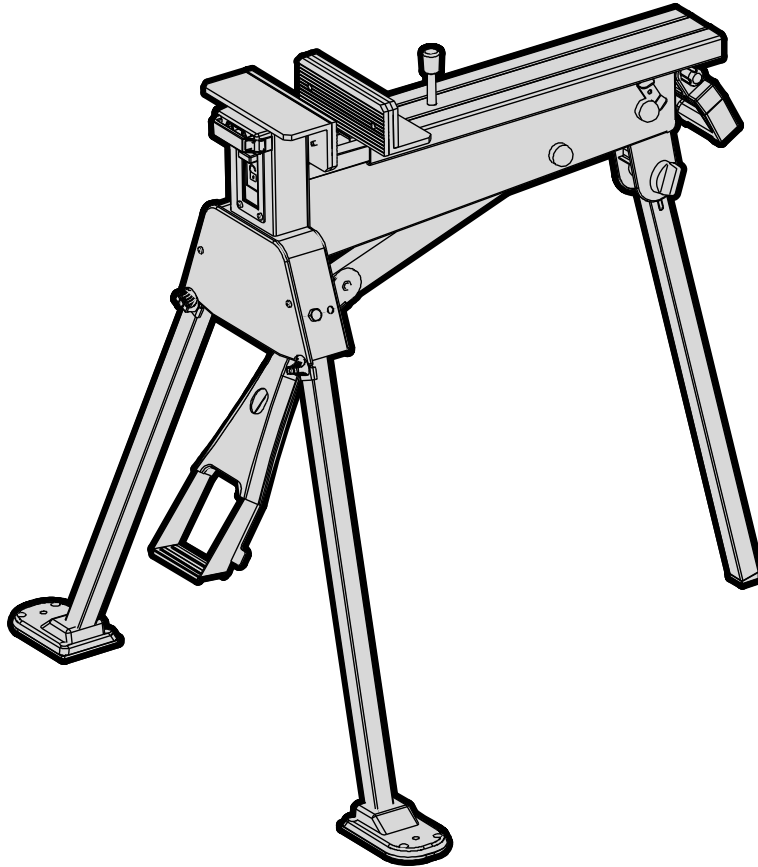




MODEL WA601

600-POUND CAPACITY CLAMPING SAWHORSE

Instruction Manual



NEED HELP? CONTACT US!

Have product questions? Need technical support? Please feel free to contact us:



1-847-429-9263 (M-F 8AM-5PM CST)



TECHSUPPORT@WENPRODUCTS.COM

IMPORTANT: Your new tool has been engineered and manufactured to WEN's highest standards for dependability, ease of operation, and operator safety. When properly cared for, this product will supply you years of rugged, trouble-free performance. Pay close attention to the rules for safe operation, warnings, and cautions. If you use your tool properly and for its intended purpose, you will enjoy years of safe, reliable service.


For replacement parts and the most up-to-date instruction manuals, visit ***WENPRODUCTS.COM***

CONTENTS

WELCOME	3
<hr/>	
Introduction	3
Specifications.....	3
SAFETY	4
<hr/>	
General Safety Rules	4
BEFORE OPERATING	6
<hr/>	
Know Your Clamping Sawhorse	6
Assembly & Adjustment.....	7
OPERATION & MAINTENANCE	8
<hr/>	
Operation	8
Maintenance.....	10
Exploded View & Parts List.....	11
Warranty Statement	13

INTRODUCTION

Thanks for purchasing the WEN Clamping Sawhorse. We know you are excited to put your tool to work, but first, please take a moment to read through the manual. Safe operation of this tool requires that you read and understand this operator's manual and all the labels affixed to the tool. This manual provides information regarding potential safety concerns, as well as helpful assembly and operating instructions for your tool.

 **SAFETY ALERT SYMBOL:** Indicates danger, warning, or caution. The safety symbols and the explanations with them deserve your careful attention and understanding. Always follow the safety precautions to reduce the risk of fire, electric shock or personal injury. However, please note that these instructions and warnings are not substitutes for proper accident prevention measures.

NOTE: The following safety information is not meant to cover all possible conditions and situations that may occur. WEN reserves the right to change this product and specifications at any time without prior notice.

At WEN, we are continuously improving our products. If you find that your tool does not exactly match this manual, please visit wenproducts.com for the most up-to-date manual or contact our customer service at **1-847-429-9263**.

Keep this manual available to all users during the entire life of the tool and review it frequently to maximize safety for both yourself and others.

SPECIFICATIONS

Model Number	WA601
Standing Dimensions	36.25" x 41" x 34.75"
Folded Dimensions	31" x 14.5" x 12.75"
Maximum Load	600 lbs evenly distributed
Jaw Size	8" x 3"
Clamping Range	0" - 40"
Clamping Force	2200 lbs
Net Weight	47 lbs

GENERAL SAFETY RULES

 **WARNING!** Read all safety warnings and all instructions. Failure to follow the warnings and instructions may result in electric shock, fire and/or serious injury.

Safety is a combination of common sense, staying alert and knowing how your item works. The term “power tool” in the warnings refers to your mains-operated (corded) power tool or battery-operated (cordless) power tool.

SAVE THESE SAFETY INSTRUCTIONS.

WORK AREA SAFETY

- 1. Keep work area clean and well lit.** Cluttered or dark areas invite accidents.
- 2. Do not operate power tools in explosive atmospheres, such as in the presence of flammable liquids, gases or dust.** Power tools create sparks which may ignite the dust or fumes.
- 3. Keep children and bystanders away while operating a power tool.** Distractions can cause you to lose control.

ELECTRICAL SAFETY

- 1. Power tool plugs must match the outlet. Never modify the plug in any way. Do not use any adapter plugs with earthed (grounded) power tools.** Unmodified plugs and matching outlets will reduce risk of electric shock.
- 2. Avoid body contact with earthed or grounded surfaces such as pipes, radiators, ranges and refrigerators.** There is an increased risk of electric shock if your body is earthed or grounded.
- 3. Do not expose power tools to rain or wet conditions.** Water entering a power tool will increase the risk of electric shock.
- 4. Do not abuse the cord. Never use the cord for carrying, pulling or unplugging the power tool. Keep cord away from heat, oil, sharp edges or moving parts.** Damaged or entangled cords increase the risk of electric shock.
- 5. When operating a power tool outdoors, use an extension cord suitable for outdoor use.** Use of a cord suitable for outdoor use reduces the risk of electric shock.

6. If operating a power tool in a damp location is unavoidable, use a ground fault circuit interrupter (GFCI) protected supply. Use of a GFCI reduces the risk of electric shock.

PERSONAL SAFETY

- 1. Stay alert, watch what you are doing and use common sense when operating a power tool. Do not use a power tool while you are tired or under the influence of drugs, alcohol or medication.** A moment of inattention while operating power tools may result in serious personal injury.
- 2. Use personal protective equipment. Always wear eye protection.** Protective equipment such as a respiratory mask, non-skid safety shoes and hearing protection used for appropriate conditions will reduce the risk of personal injury.
- 3. Prevent unintentional starting. Ensure the switch is in the off-position before connecting to power source and/or battery pack, picking up or carrying the tool.** Carrying power tools with your finger on the switch or energizing power tools that have the switch on invites accidents.
- 4. Remove any adjusting key or wrench before turning the power tool on.** A wrench or a key left attached to a rotating part of the power tool may result in personal injury.
- 5. Do not overreach. Keep proper footing and balance at all times.** This enables better control of the power tool in unexpected situations.
- 6. Dress properly. Do not wear loose clothing or jewelry. Keep your hair and clothing away from moving parts.** Loose clothes, jewelry or long hair can be caught in moving parts.

GENERAL SAFETY RULES

 **WARNING!** Read all safety warnings and all instructions. Failure to follow the warnings and instructions may result in electric shock, fire and/or serious injury.

Safety is a combination of common sense, staying alert and knowing how your item works. The term “power tool” in the warnings refers to your mains-operated (corded) power tool or battery-operated (cordless) power tool.

SAVE THESE SAFETY INSTRUCTIONS.

7. If devices are provided for the connection of dust extraction and collection facilities, ensure these are connected and properly used. Use of dust collection can reduce dust-related hazards.

POWER TOOL USE AND CARE

1. Do not force the power tool. Use the correct power tool for your application. The correct power tool will do the job better and safer at the rate for which it was designed.

2. Do not use the power tool if the switch does not turn it on and off. Any power tool that cannot be controlled with the switch is dangerous and must be repaired.

3. Disconnect the plug from the power source and/or the battery pack from the power tool before making any adjustments, changing accessories, or storing power tools. Such preventive safety measures reduce the risk of starting the power tool accidentally.

4. Store idle power tools out of the reach of children and do not allow persons unfamiliar with the power tool or these instructions to operate the power tool. Power tools are dangerous in the hands of untrained users.

5. Maintain power tools. Check for misalignment or binding of moving parts, breakage of parts and any other condition that may affect the power tool's operation. If damaged, have the power tool repaired before use. Many accidents are caused by poorly maintained power tools.

6. Keep cutting tools sharp and clean. Properly maintained cutting tools with sharp cutting edges are less likely to bind and are easier to control.

7. Use the power tool, accessories and tool bits, etc. in accordance with these instructions, taking into account the working conditions and the work to be performed. Use of the power tool for operations different from those intended could result in a hazardous situation.

8. Use clamps to secure your workpiece to a stable surface. Holding a workpiece by hand or using your body to support it may lead to loss of control.

9. KEEP GUARDS IN PLACE and in working order.

SERVICE

1. Have your power tool serviced by a qualified repair person using only identical replacement parts. This will ensure that the safety of the power tool is maintained.

CALIFORNIA PROPOSITION 65 WARNING

Some dust created by power sanding, sawing, grinding, drilling, and other construction activities may contain chemicals, including lead, known to the State of California to cause cancer, birth defects, or other reproductive harm. Wash hands after handling. Some examples of these chemicals are:

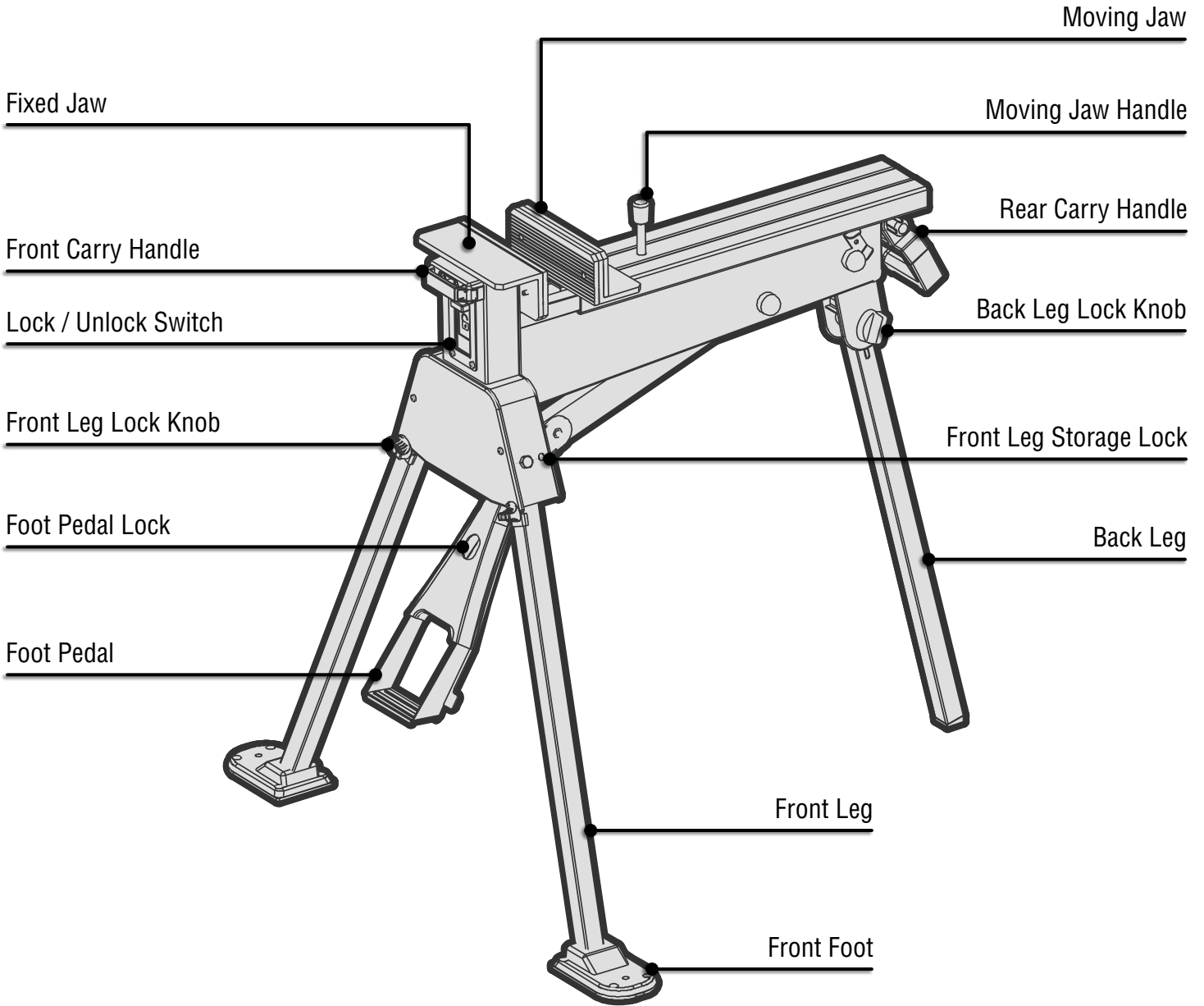
- Lead from lead-based paints.
- Crystalline silica from bricks, cement, and other masonry products.
- Arsenic and chromium from chemically treated lumber.

Your risk from these exposures varies depending on how often you do this type of work. To reduce your exposure to these chemicals, work in a well-ventilated area with approved safety equipment such as dust masks specially designed to filter out microscopic particles.

KNOW YOUR CLAMPING SAWHORSE

TOOL PURPOSE

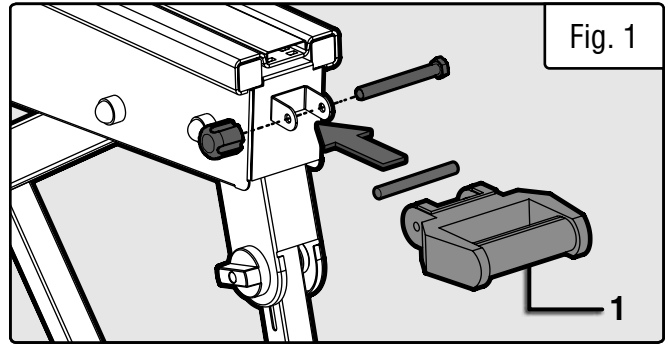
Clamp, rip, bend, and shape with ease using your clamping sawhorse. Refer to the following diagrams to become familiarized with all the parts of your clamping sawhorse. The components will be referred to later in the manual for assembly and operation instructions.



ASSEMBLY & ADJUSTMENTS

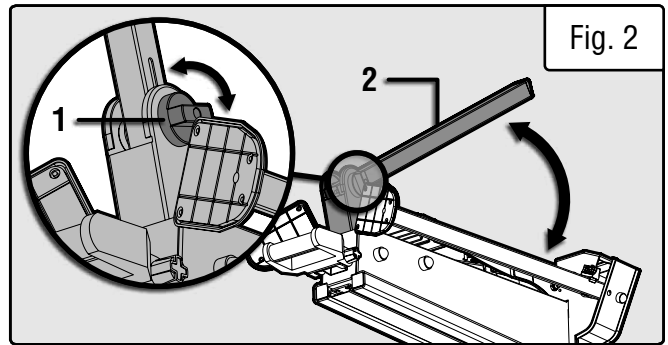
ASSEMBLING THE CLAMPING SAWHORSE

1. Fit the rear carry handle (Fig. 1 - 1) into the welded bracket and fasten the handle into position with the bolt and locking knob.



SETTING UP THE CLAMPING SAWHORSE

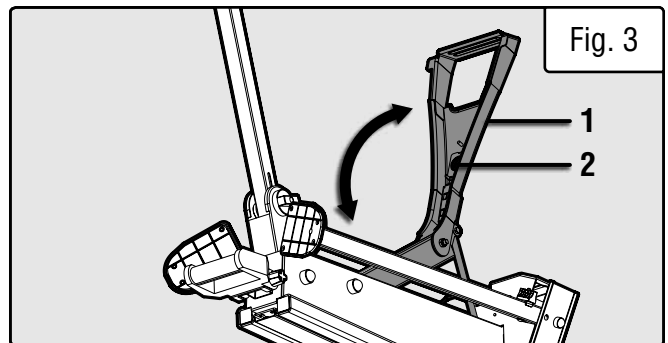
1. Position the clamping sawhorse upside down, loosen the back leg lock knob (Fig. 2 - 1), and slide the back leg (Fig. 2 - 2) out from its stored position. Flip the back leg out and slide it into the secure open position. Retighten the back leg lock knob.



2. Flip the foot pedal (Fig. 3 - 1) out until it locks into the correct position.

3. Flip the front legs (Fig. 4 - 1) out and turn the front leg lock knobs (Fig. 4 - 2) to the LOCK position.

4. Flip the clamping sawhorse to its upright position and double check that everything is stable and secure.



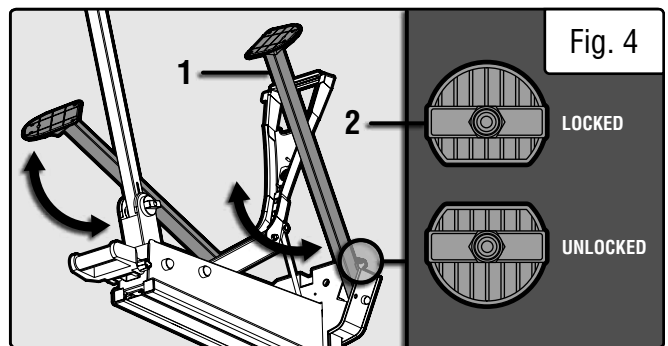
FOLDING THE CLAMPING SAWHORSE

1. Remove workpiece from the jaws and make sure that the lock / unlock switch (Fig. 5 - 1) is set to the UNLOCK position.

2. Turn the clamping sawhorse upside down

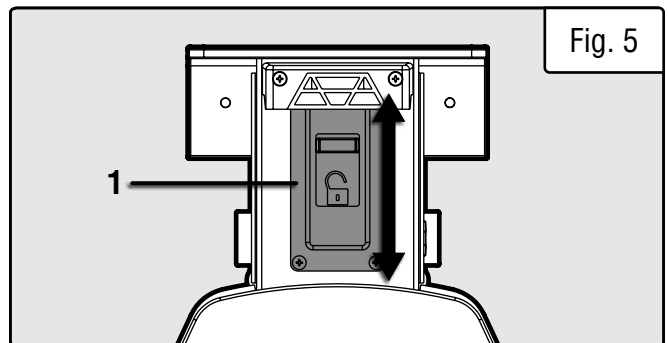
3. Press the foot pedal lock (Fig. 3 - 2) so that the foot pedal can be lowered.

4. Release each of the leg locks (Fig. 4 - 2) and fold each of the front legs (Fig. 4 - 1) until the front leg storage locks engage.



5. Loosen the rear leg lock lever (Fig. 2 - 1) so that the rear leg (Fig. 2 - 2) can be lifted out, pivoted down, and slid into the secured closed position.

6. Re-tighten the rear leg lock lever.



OPERATION

CLAMPING

1. Place the workpiece against the fixed jaw pad (Fig. 6 - 1).
2. Slide the moving jaw (Fig. 6 - 2) up against the workpiece. The moving jaw can be moved by hand or by using the foot pedal (Fig. 7 - 1).
3. Engage the pawl by sliding the lock / unlock switch (Fig. 8 - 1) to the LOCK position.
4. Apply clamping force by pressing the foot pedal (Fig. 7 - 1) until the workpiece is clamped sufficiently

NOTE: For some workpieces, you may want to first clamp loosely (to allow for adjustments), before fully clamping the workpiece. Use a level to check the position of the workpiece before clamping.

⚠ WARNING! Do not exceed 220lbs of force when operating the foot pedal, as the foot pedal mechanism could sustain damage. Always operate the foot pedal in a precise, controlled manner.

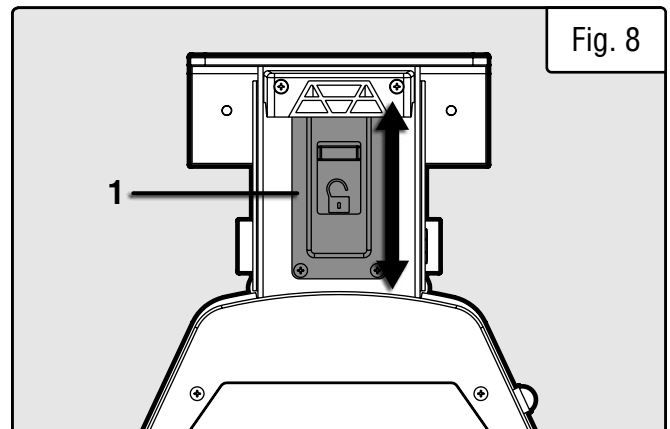
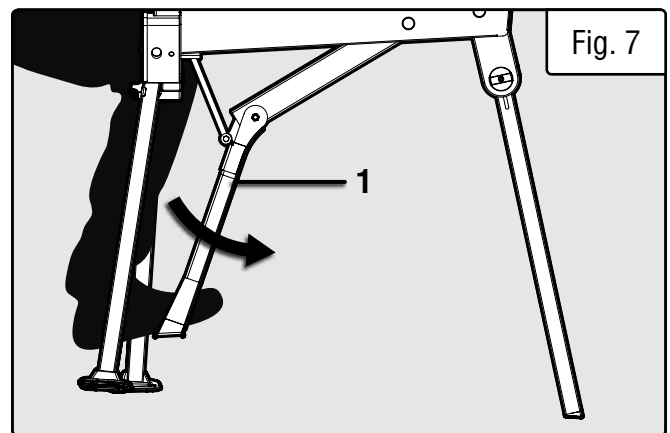
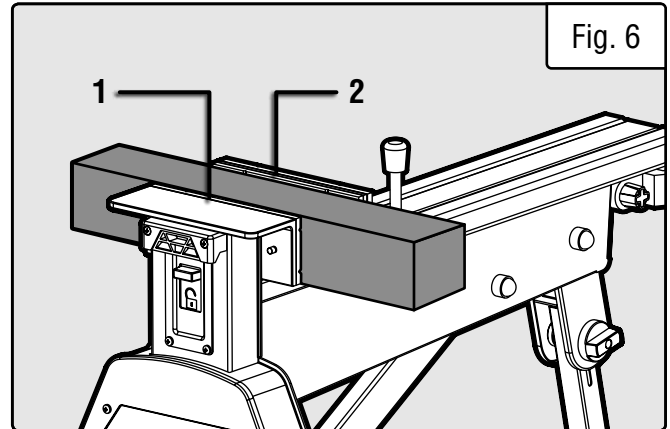
RELEASING

1. Slide the Lock / Unlock Switch (Fig. 8 - 1) to the UNLOCK position.
2. Apply pressure to the foot pedal (Fig. 7 - 1) while also supporting the workpiece until you hear a click.
3. Once the click is heard, apply slightly more pressure to the foot pedal (Fig. 7 - 1), and release the pedal slowly. The clamping system is now unlocked.
4. Slide the moving jaw (Fig. 6 - 2) away from the workpiece.

NOTES:

- If clamping workpiece on one side of the jaws, reduce maximum clamping pressure to avoid uneven clamping.
- To prevent damage to the surface of the workpiece, use a soft material between the jaw pads and workpiece.
- If the workpiece has sharp edges, the jaw pads will need to be protected or removed when clamping.

Notes continue on the next page.



OPERATION

NOTES CONTINUED:

- To clamp a workpiece 22.5 in. - 40 in. in size, re-position the moving jaw in reverse and unscrew the moving jaw handle. Do not try to clamp large, uneven workpieces that may force the moving jaw to bend/warp as it clamps. The workpiece should sit level on the top surface between the jaws (Fig. 9).
- To clamp a workpiece between 16.5 in. - 22.5 in. in size, re-position the moving jaw in reverse, unscrew the moving jaw handle, and place a piece of scrap wood (Fig. 10 - 1) against either of the jaws to securely clamp your workpiece (Fig. 10).
- When clamping long or large workpieces that may tip over the clamping sawhorse, note that the two front feet have individual holes that can be used to secure them to a surface with fasteners to increase stability (Fig. 11).
- When removing the movable jaw handle, note that there are two threaded holes on the clamp body, close to the back leg storage hole, where it can be stored.

OUTDOOR USE

Your clamping sawhorse is great for outdoor use. Its design allows the weight of the workpiece to be dispersed throughout the three legs and suitable for most terrain. If the terrain is too soft (wet dirt, sand, etc.) it might be necessary to place a large, flat board underneath the legs to prevent the clamping sawhorse from sinking into the ground.

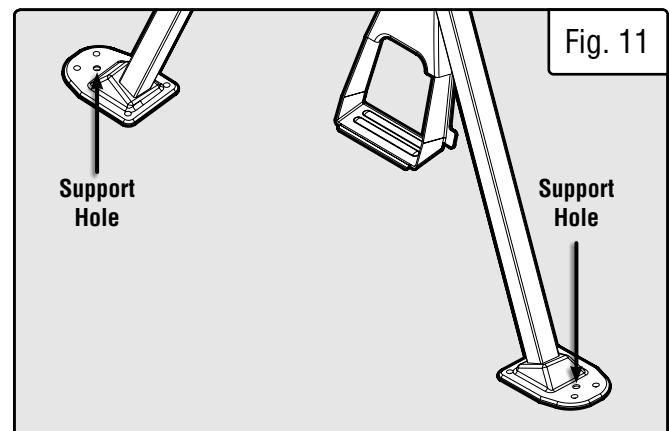
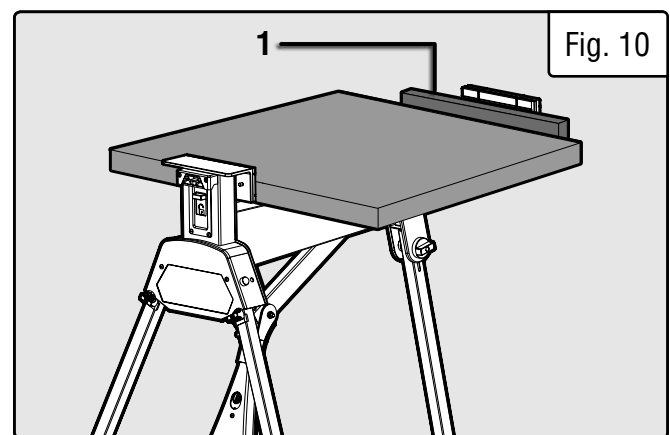
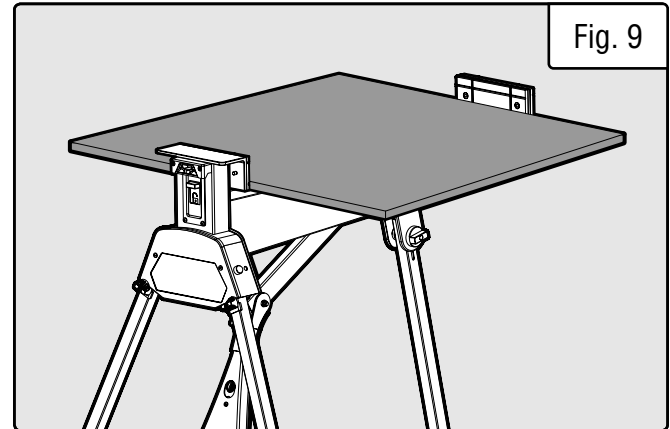
If the clamping sawhorse gets wet, it is important to dry the tool to prevent corrosion. Additionally, re-apply any oil or grease that might have worn away from getting wet to extend the life of the clamping sawhorse.

BENDING & SHAPING

Your clamping sawhorse is fully capable of being used as a vise to bend and shape materials. The top surface of the fixed front jaw is strong enough to be used with small to medium hammers.

One ton of clamping force allows the jaws to be used as a press to flatten a workpiece.

NOTE: When necessary, remove the jaw pads to protect them from getting damaged. Do not use excessive force when using a hammer. The front fixed jaw is only suitable for light use in these circumstances.



⚠ WARNING! Never hit the moving jaw with a hammer, as the jaw and clamping mechanism could get damaged.

MAINTENANCE

ROUTINE INSPECTION

Before each use, inspect the tool. If any of these following conditions exist, do not use until parts are replaced.

Check for:

- Loose hardware or improper mounting
- Misalignment
- Cracked or broken parts
- Any other condition that may affect its safe operation

⚠ CAUTION! Most plastics are susceptible to damage from various types of commercial solvents. Do not use any cleaning products that could damage plastic parts. Some of these include but are not limited to: gasoline, carbon tetrachloride, chlorinated cleaning solvents, and household detergents that contain ammonia.

CLEANING & STORAGE

1. After every operation, use a vacuum to remove sawdust or metal shavings from the tool surfaces, motor housing and work area.
2. Wipe the tool surfaces clean with a soft cloth or brush.
3. Store the tool in a clean and dry place away from the reach of children.

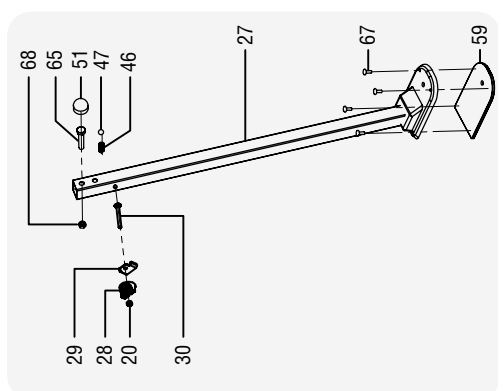
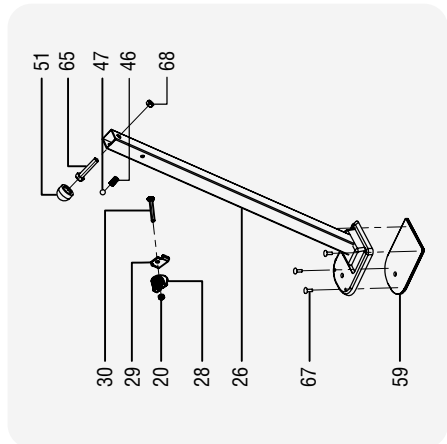
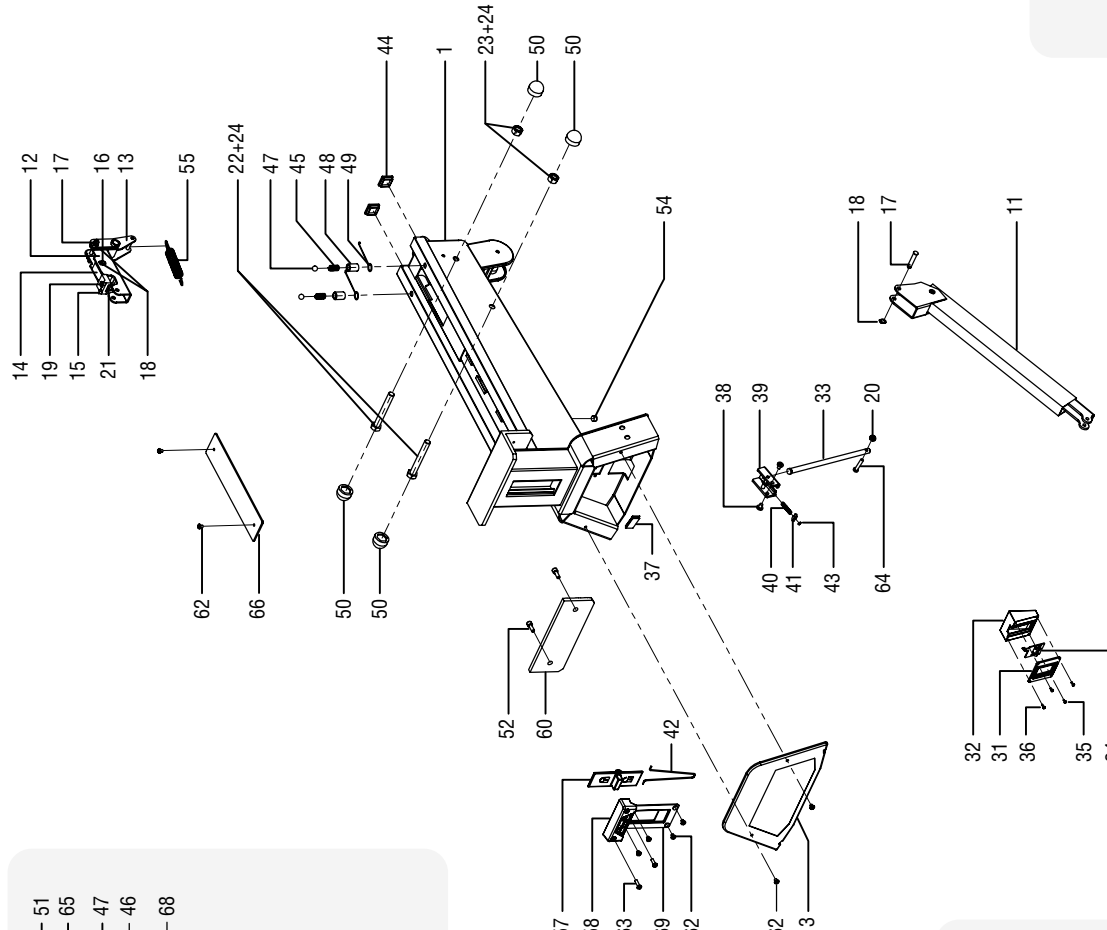
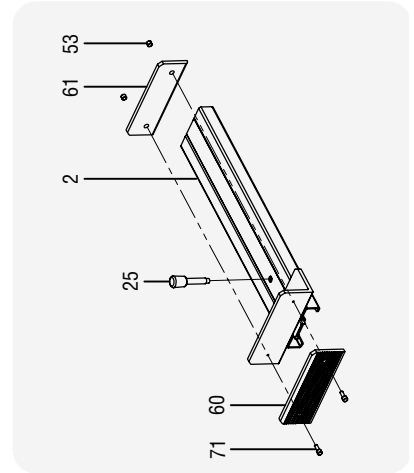
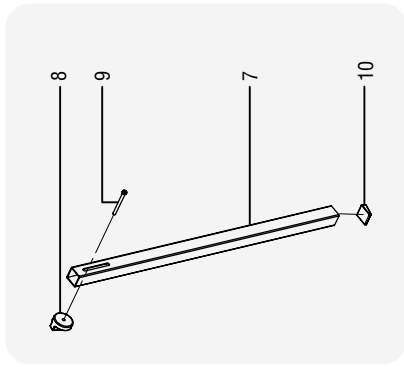
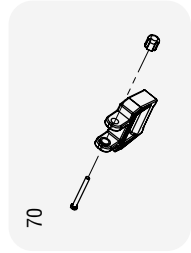
PRODUCT DISPOSAL

Used power tools should not be disposed of together with household waste. If the product contains electronic components they should be recycled. Please take this product to your local recycling facility for responsible disposal and to minimize its environmental impact.



Please recycle the packaging where facilities exist.

EXPLODED VIEW & PARTS LIST



EXPLODED VIEW & PARTS LIST

NO.	PART NO.	DESCRIPTION	QTY.
1	WA600-001	Clamp Body	1
2	WA600-002	Sliding Jaw	1
3	WA600-003	Front Cover	1
4	WA600-004	Clamping Pedal	1
5	WA600-005	Pedal Bolt	1
6	WA600-006	Pedal Bolt Spring	2
7	WA600-007	Rear Leg	1
8	WA600-008	Rear Leg Lock Knob	1
9	WA600-009	Rear Leg Lock Knob Screw	1
10	WA600-010	Rear Leg Foot	1
11	WA600-011	Pedal Linkage Arm	1
12	WA600-012	Inner Support Block	1
13	WA600-013	Spring Block Fixture	1
14	WA600-014	Tooth Block	1
15	WA600-015	Pawl Tooth	1
16	WA600-016	Tooth Block Pin	1
17	WA600-017	Rocker Arm Pin	1
18	WA600-018	7 Snap Spring	2
19	WA600-019	Pawl Tooth Block Screw	1
20	WA600-020	M6 Locking Nut	6
21	WA600-021	Pawl Tooth Block Spring	1
22	WA600-022	M12x95 Hex Screw	2
23	WA600-023	M12 Locking Nut	2
24	WA600-024	12 Washer	4
25	WA600-025	Sliding Clamp Handle	1
26	WA600-026	Front Left Leg	1
27	WA600-027	Front Right Leg	1
28	WA600-028	Front Leg Lock Knob	2
29	WA600-029	Front Leg Locking Spacer	2
30	WA600-030	M6x55 Screw With Tenon	2
31	WA600-031	Lock Box Cover	1
32	WA600-032	Lock Box	1
33	WA600-033	Locking Rod	1
34	WA600-034	Pull Plate	1
35	WA600-035	M4x25 Cross Head Screw	2

NO.	PART NO.	DESCRIPTION	QTY.
36	WA600-036	M4x40 Cross Head Screw	2
37	WA600-037	Lock Block	1
38	WA600-038	Lock Pawl Pin	2
39	WA600-039	Lock Pawl	1
40	WA600-040	Lock Block Spring	1
41	WA600-041	Locking Block Limiter	1
42	WA600-042	Button Tension Spring	1
43	WA600-043	Lock Block Snap Spring	1
44	WA600-044	Rail End Cap	2
45	WA600-045	Rail Ball Spring	2
46	WA600-046	Leg Ball Spring	2
47	WA600-047	Ball	4
48	WA600-048	Ball Positioning Fixture	2
49	WA600-049	Rail Ball Rod	2
50	WA600-050	M12 Screw Cap	4
51	WA600-051	M8 Screw Cap	4
52	WA600-052	Plastic Jaw Stud	2
53	WA600-053	Plastic Rivet Nut	2
54	WA600-054	Plug	1
55	WA600-055	Release Spring	1
57	WA600-057	Lock Switch	1
58	WA600-058	Front Handle	1
59	WA600-059	Front Foot Pad	2
60	WA600-060	Jaw Pad	2
61	WA600-061	Sliding Jaw Back Pad	1
62	WA600-062	Cross Head Screw	9
63	WA600-063	M5x30 Cross Head Screw	2
64	WA600-064	M6x25 Hex Screw	1
65	WA600-065	M8x45 Hex Screw	3
66	WA600-066	Frame Board	1
67	WA600-067	Foot Pad Rivet	8
68	WA600-068	M8 Locknut	3
69	WA600-069	Lock Switch Cover	1
70	WA600-070	Rear Handle	1
71	WA600-071	Plastic Screw	2

WARRANTY STATEMENT

WEN Products is committed to building tools that are dependable for years. Our warranties are consistent with this commitment and our dedication to quality.

LIMITED WARRANTY OF WEN PRODUCTS FOR HOME USE

GREAT LAKES TECHNOLOGIES, LLC (“Seller”) warrants to the original purchaser only, that all WEN consumer power tools will be free from defects in material or workmanship during personal use for a period of two (2) years from date of purchase or 500 hours of use; whichever comes first. Ninety days for all WEN products if the tool is used for professional or commercial use. Purchaser has 30 days from the date of purchase to report missing or damaged parts.

SELLER’S SOLE OBLIGATION AND YOUR EXCLUSIVE REMEDY under this Limited Warranty and, to the extent permitted by law, any warranty or condition implied by law, shall be the replacement of parts, without charge, which are defective in material or workmanship and which have not been subjected to misuse, alteration, careless handling, misrepair, abuse, neglect, normal wear and tear, improper maintenance, or other conditions adversely affecting the Product or the component of the Product, whether by accident or intentionally, by persons other than Seller. To make a claim under this Limited Warranty, you must make sure to keep a copy of your proof of purchase that clearly defines the Date of Purchase (month and year) and the Place of Purchase. Place of Purchase must be a direct vendor of Great Lakes Technologies, LLC. Purchasing through third party vendors, including but not limited to garage sales, pawn shops, resale shops, or any other secondhand merchant, voids the warranty included with this product. Contact techsupport@wenproducts.com or 1-847-429-9263 with the following information to make arrangements: your shipping address, phone number, serial number, required part numbers, and proof of purchase. Damaged or defective parts and products may need to be sent to WEN before the replacements can be shipped out.

Upon the confirmation of a WEN representative, your product may qualify for repairs and service work. When returning a product for warranty service, the shipping charges must be prepaid by the purchaser. The product must be shipped in its original container (or an equivalent), properly packed to withstand the hazards of shipment. The product must be fully insured with a copy of the proof of purchase enclosed. There must also be a description of the problem in order to help our repairs department diagnose and fix the issue. Repairs will be made and the product will be returned and shipped back to the purchaser at no charge for addresses within the contiguous United States.

THIS LIMITED WARRANTY DOES NOT APPLY TO ITEMS THAT WEAR OUT FROM REGULAR USAGE OVER TIME, INCLUDING BELTS, BRUSHES, BLADES, BATTERIES, ETC. ANY IMPLIED WARRANTIES SHALL BE LIMITED IN DURATION TO TWO (2) YEARS FROM DATE OF PURCHASE. SOME STATES IN THE U.S. AND SOME CANADIAN PROVINCES DO NOT ALLOW LIMITATIONS ON HOW LONG AN IMPLIED WARRANTY LASTS, SO THE ABOVE LIMITATION MAY NOT APPLY TO YOU.

IN NO EVENT SHALL SELLER BE LIABLE FOR ANY INCIDENTAL OR CONSEQUENTIAL DAMAGES (INCLUDING BUT NOT LIMITED TO LIABILITY FOR LOSS OF PROFITS) ARISING FROM THE SALE OR USE OF THIS PRODUCT. SOME STATES IN THE U.S. AND SOME CANADIAN PROVINCES DO NOT ALLOW THE EXCLUSION OR LIMITATION OF INCIDENTAL OR CONSEQUENTIAL DAMAGES, SO THE ABOVE LIMITATION OR EXCLUSION MAY NOT APPLY TO YOU.

THIS LIMITED WARRANTY GIVES YOU SPECIFIC LEGAL RIGHTS, AND YOU MAY ALSO HAVE OTHER RIGHTS WHICH VARY FROM STATE TO STATE IN THE U.S., PROVINCE TO PROVINCE IN CANADA AND FROM COUNTRY TO COUNTRY.

THIS LIMITED WARRANTY APPLIES ONLY TO ITEMS SOLD WITHIN THE UNITED STATES OF AMERICA, CANADA AND THE COMMONWEALTH OF PUERTO RICO. FOR WARRANTY COVERAGE WITHIN OTHER COUNTRIES, CONTACT THE WEN CUSTOMER SUPPORT LINE. FOR WARRANTY PARTS OR PRODUCTS REPAIRED UNDER WARRANTY SHIPPING TO ADDRESSES OUTSIDE OF THE CONTIGUOUS UNITED STATES, ADDITIONAL SHIPPING CHARGES MAY APPLY.

**THANKS FOR
REMEMBERING**  [®]