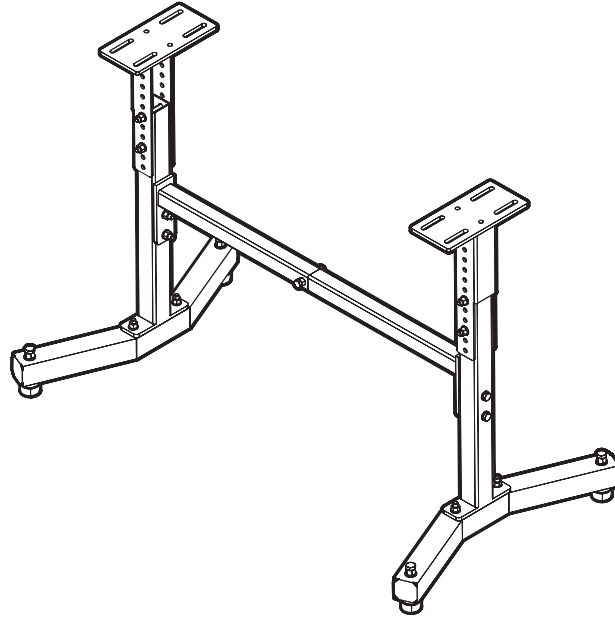




MODEL LA8800

LATHE STAND



For replacement parts visit
WENPRODUCTS.COM

IMPORTANT:

Your new tool has been engineered and manufactured to WEN's highest standards for dependability, ease of operation, and operator safety. When properly cared for, this product will supply you years of rugged, trouble-free performance. Pay close attention to the rules for safe operation, warnings, and cautions. If you use your tool properly and for its intended purpose, you will enjoy years of safe, reliable service.



NEED HELP? CONTACT US!

Have product questions? Need technical support?
Please feel free to contact us at:



800-232-1195 (M-F 8am-5pm CST)



techsupport@wenproducts.com



WENPRODUCTS.COM

TABLE OF CONTENTS


Specifications.....	2
Introduction	3
General Safety Rules	4
Know Your Lathe Stand	6
Assembly & Adjustments	7
Maintenance.....	9
Exploded View & Parts List	10
Warranty Statement.....	12

SPECIFICATIONS

Model Number	LA8800
Minimum Length	23.75"
Maximum Length	35.5"
Width	23.5"
Minimum Working Height	24.5"
Maximum Working Height	34.5"
Minimum Footprint	28" x 23.5"
Maximum Footprint	42" x 23.5"
Mounting Platform	9" L x 4.3" W
Weight Capacity	225 lbs
Product Dimension	28" L x 23.5" W x 24.5" H
Product Weight	42.5 lbs

INTRODUCTION

Thanks for purchasing the WEN lathe stand. We know you are excited to put your tool to work, but first, please take a moment to read through the manual. Safe operation of this tool requires that you read and understand this operator's manual and all the labels affixed to the tool. This manual provides information regarding potential safety concerns, as well as helpful assembly and operating instructions for your tool.

 **WARNING:** Indicates danger, warning, or caution. The safety symbols and the explanations with them deserve your careful attention and understanding. Always follow the safety precautions to reduce the risk of fire, electric shock and personal injury. However, please note that these instructions and warnings are not substitutes for proper accident prevention measures.

NOTE: The following safety information is not meant to cover all possible conditions and situations that may occur. WEN reserves the right to change this product and specifications at any time without prior notice.

Keep this manual available to all users during the entire life of the tool and review it frequently to maximize safety for both yourself and others.

GENERAL SAFETY RULES

Safety is a combination of common sense, staying alert, and knowing how your item works. SAVE THESE SAFETY INSTRUCTIONS.

⚠ WARNING: Read and understand all warnings, cautions and operating instructions before using this tool. Failure to follow all instructions listed below may result in personal injury and tool damage.

WORK AREA SAFETY

1. Keep work area clean and well lit. Cluttered or dark areas invite accidents.
2. Do not operate power tools in explosive atmospheres, such as in the presence of flammable liquids, gases or dust. Power tools create sparks which may ignite the dust or fumes.
3. Do not expose power tools to rain or wet conditions. Water entering a power tool will increase the risk of electric shock.
4. Keep children and bystanders away while operating a power tool. Distractions can cause you to lose control.

ELECTRICAL SAFETY

1. Power tool plugs must match the outlet. Never modify the plug in any way. Do not use any adapter plugs with earthed (grounded) power tools. Unmodified plugs and matching outlets will reduce risk of electric shock.
2. Avoid body contact with earthed or grounded surfaces such as pipes, radiators, ranges and refrigerators. There is an increased risk of electric shock if your body is earthed or grounded.
3. Do not abuse the cord. Never use the cord for carrying, pulling or unplugging the power tool. Keep cord away from heat, oil, sharp edges or moving parts. Damaged or entangled cords increase the risk of electric shock.
4. If operating a power tool in a damp location is unavoidable, use a ground fault circuit interrupter (GFCI) protected supply. Use of a GFCI reduces the risk of electric shock.

PERSONAL SAFETY

1. Stay alert, watch what you are doing and use common sense when operating a power tool. Do not use a power tool while you are tired or under the influence of drugs, alcohol or medication. A moment of inattention while operating power tools may result in serious personal injury.
2. Use personal protective equipment. Always wear eye protection. Protective equipment such as a dust mask, non-skid safety shoes and hearing protection used for appropriate conditions will reduce the risk of personal injury.
3. Dress properly. Do not wear loose clothing or jewelry. Keep your hair and clothing away from moving parts. Loose clothes, jewelry or long hair can be caught in moving parts.

GENERAL SAFETY RULES

4. Prevent unintentional starting. Ensure the switch is in the off-position before connecting to power source and/or battery pack, picking up or carrying the tool. Carrying power tools with your finger on the switch or energizing power tools that have the switch on invites accidents.
5. Remove any adjusting key or wrench before turning the power tool on. A wrench or a key left attached to a rotating part of the power tool may result in personal injury.
6. Do not overreach. Keep proper footing and balance at all times. This enables better control of the power tool in unexpected situations.
7. If devices are provided for the connection of dust extraction and collection facilities, ensure these are connected and properly used. Use of dust collection can reduce dust-related hazards.

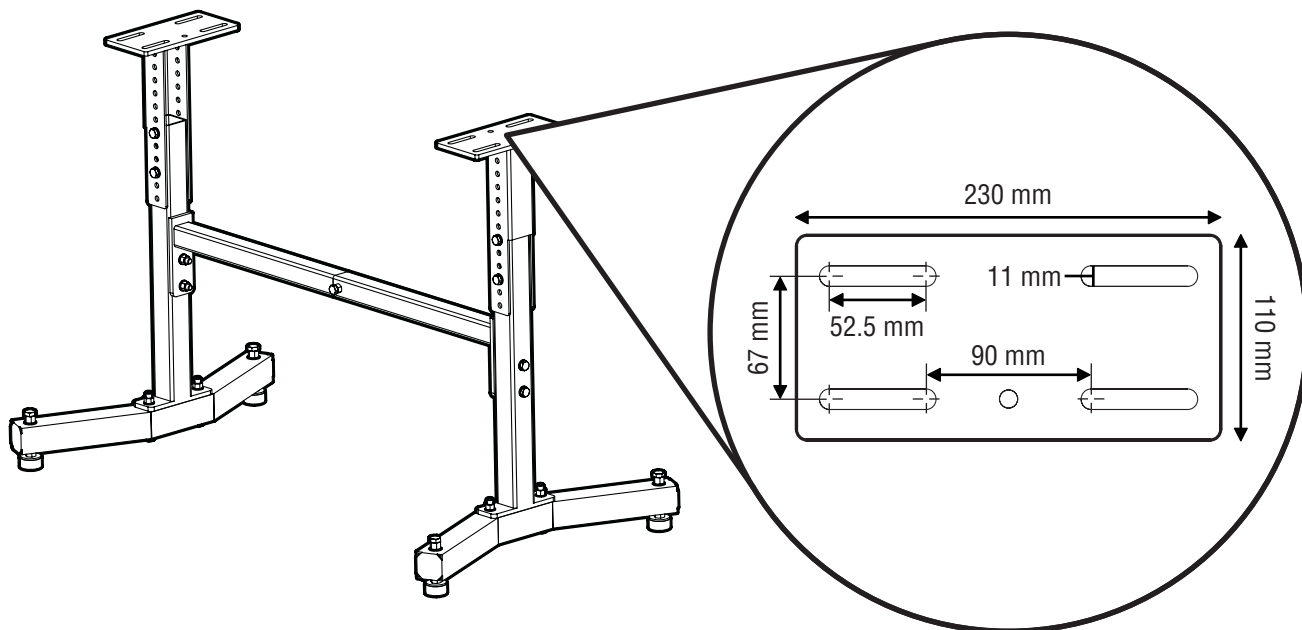
POWER TOOL USE AND CARE

1. Do not force the power tool. Use the correct power tool for your application. The correct power tool will do the job better and safer at the rate for which it was designed.
2. Do not use the power tool if the switch does not turn it on and off. Any power tool that cannot be controlled with the switch is dangerous and must be repaired.
3. Disconnect the plug from the power source and/or the battery pack from the power tool before making any adjustments, changing accessories, or storing power tools. Such preventive safety measures reduce the risk of starting the power tool accidentally.
4. Store idle power tools out of the reach of children and do not allow persons unfamiliar with the power tool or these instructions to operate the power tool. Power tools are dangerous in the hands of untrained users.
5. Maintain power tools. Check for misalignment or binding of moving parts, breakage of parts and any other condition that may affect the power tool's operation. If damaged, have the power tool repaired before use. Many accidents are caused by poorly maintained power tools.
6. Use the power tool, accessories and tool bits etc. in accordance with these instructions, taking into account the working conditions and the work to be performed. Use of the power tool for operations different from those intended could result in a hazardous situation.

SERVICE

Have your power tool serviced by a qualified repair person using only identical replacement parts. This will ensure that the safety of the power tool is maintained.

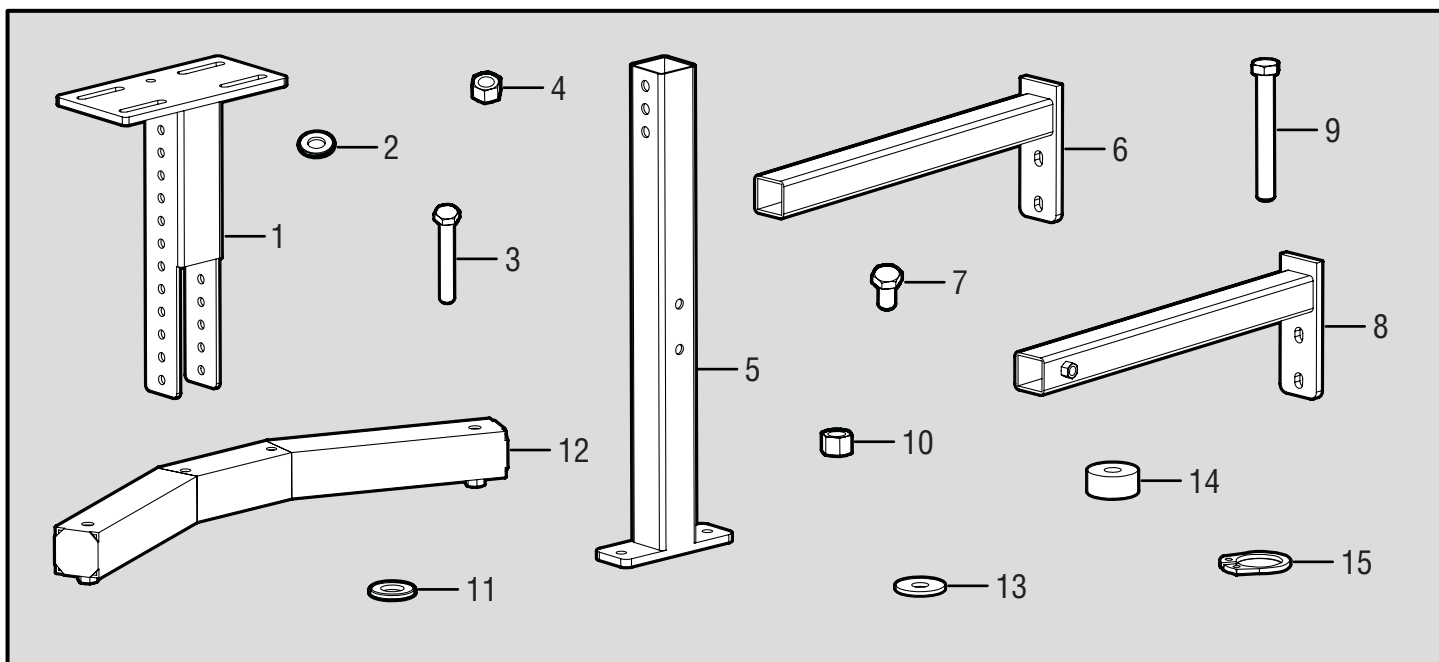
KNOW YOUR LATHE STAND



PACKING LIST

Check your packing list against the diagram below. If any part is damaged or missing, please contact our customer service at (800) 232-1195, M-F 8-5 CST or email us at techsupport@wenproducts.com.

Tools needed for assembly (not included): Adjustable Wrench and pliers OR socket set, bubble level



- | | | |
|--------------------------|-------------------------|---------------------|
| 1. Mounting Platform (2) | 6. Inner Beam (1) | 11. Washer M12 (8) |
| 2. Washer M10 (24) | 7. Hex Bolt M10x20 (2) | 12. Base (2) |
| 3. Hex Bolt M10x80 (12) | 8. Outer Beam (1) | 13. Washer M12 (4) |
| 4. Hex Nut M10 (12) | 9. Hex Bolt M12x100 (4) | 14. Rubber Foot (4) |
| 5. Column (2) | 10. Hex Nut M12 (4) | 15. Clip (4) |

ASSEMBLY & ADJUSTMENTS

ATTACHING FEET TO BASE (FIG. 1)

1. Locate one base (Fig. 1 - 8).
2. Install two M10 washers (Fig. 1 - 3), two M12 hex nuts (Fig. 1 - 2), and two M12X100 hex bolts (Fig. 1 - 1) through the top of the base on each side.
3. Add two M12 washers (Fig. 1 - 4), two rubber feet (Fig. 1 - 5), two M10 washers (Fig. 1 - 6), and two clips (Fig. 1 - 7) to the bolts through the base on each side.
4. Repeat steps 1 - 3 to install feet on the second base.

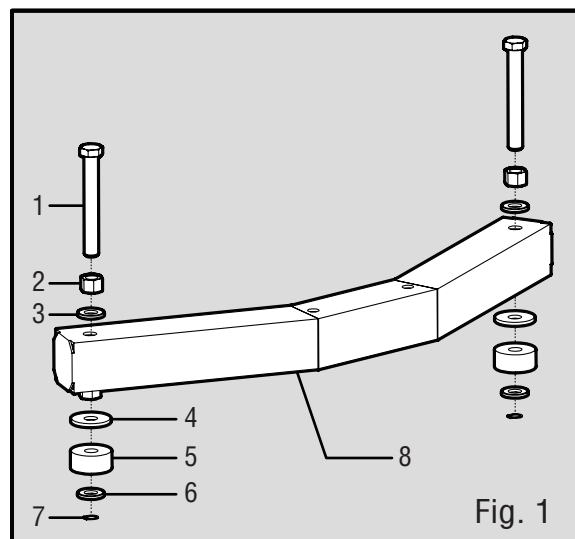


Fig. 1

ATTACHING BASE TO COLUMN (FIG. 2)

1. Locate one base (Fig. 2 - 6) and one column (Fig. 2 - 5).
2. Install two M10 washers (Fig. 2 - 3) and two M10x80 hex bolts (Fig. 2 - 4) through the column's lower flange and into the base.
3. Add two M10 washers (Fig. 2 - 2) and two M10 hex nuts (Fig. 2 - 1) to the bolts underneath the base, to secure the column in place.
4. Repeat steps 1 - 3 to assemble the second base and column.

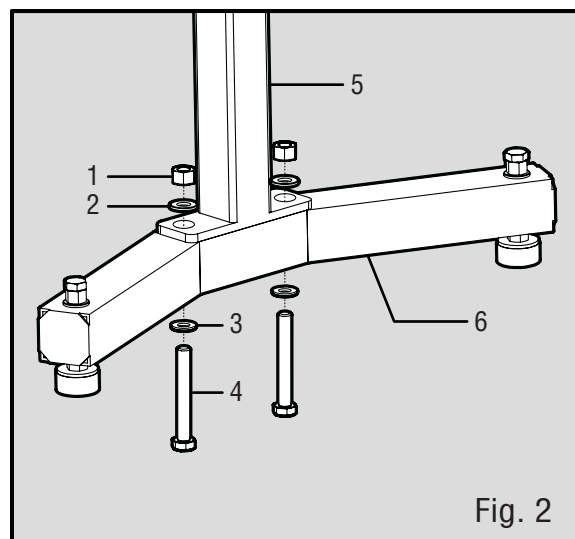


Fig. 2

ATTACHING OUTER BEAM TO COLUMN (FIG. 3)

1. Locate outer beam (Fig. 3 - 5) and one column base assembly (Fig. 3 - 6).

NOTE: The legs on the column base assembly should be facing outward.

2. Install two M10 washers (Fig. 3 - 2) and two M10x80 hex bolts (Fig. 3 - 3) through the column base assembly and into the outer beam flange.
3. Add two M10 washers (Fig. 3 - 4) and two hex nuts (Fig. 3 - 1) to the bolts through the column to secure the outer beam.
4. Repeat steps 1 - 3 to attach the inner beam to the other column base assembly.

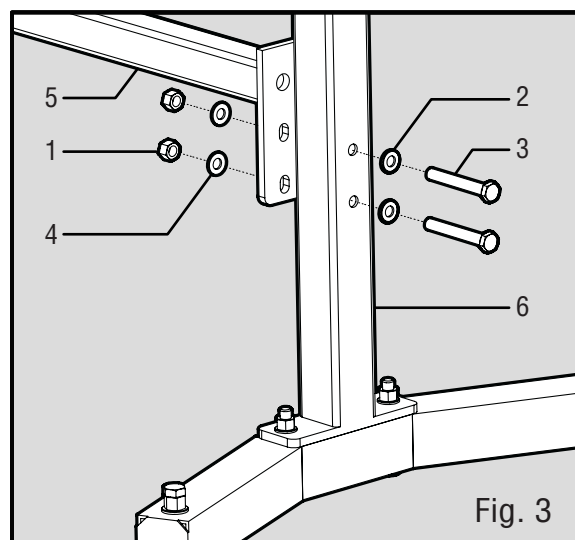
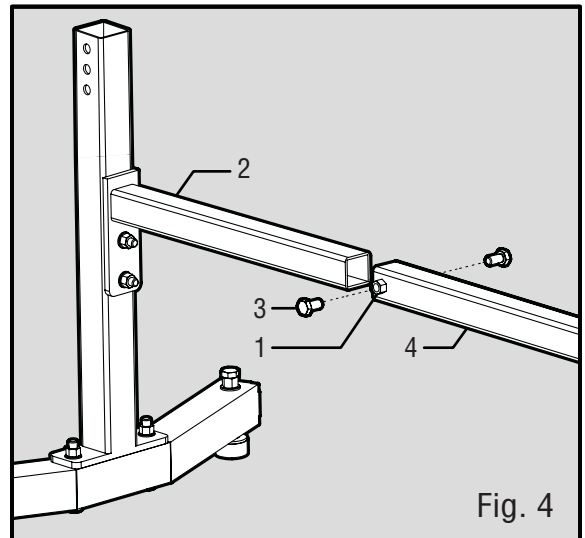


Fig. 3

ASSEMBLY & ADJUSTMENTS

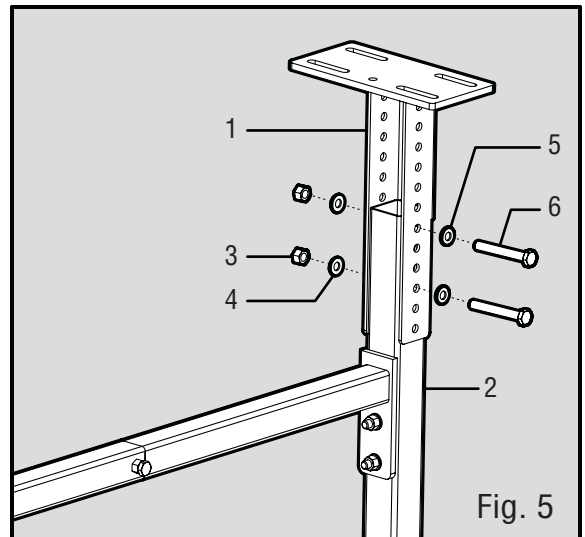
ATTACHING INNER & OUTER BEAMS (FIG. 4)

1. Slide the inner beam (Fig. 4 - 2) into the outer beam (Fig. 4 - 4).
2. Add two M10x20 hex bolts (Fig. 4 - 3) to the welded hex nuts (Fig. 4 - 1) that are located on the outer beam.
3. Hand-tighten the bolts at this point. Secure the bolts after the length of the lathe has been determined (Fig. 6).



ATTACHING MOUNTING PLATFORMS (FIG. 5)

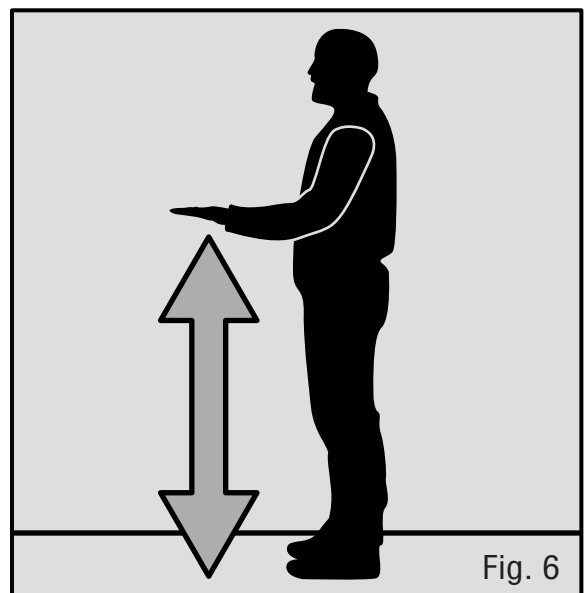
1. Install the mounting platforms (Fig. 5 - 1) to the top of both Columns (Fig. 5 - 2) using two M10 washers (Fig. 5 - 5) and two M10x80 hex bolts (Fig. 5 - 6)
2. Add two M10 washers (Fig. 5 - 4) and two M10 hex nuts (Fig. 5 - 3) to the bolts through the mounting platforms. Hand-tighten the nuts at this point, until the proper lathe height has been determined in section "Determining Proper Lathe Height."



DETERMINING PROPER LATHE HEIGHT (FIG. 6)

1. First, determine the height of your lathe by measuring the distance from the base of the lathe to the point on the live center.
2. Next, with your arm bent at 90°, measure the distance from your elbow to the floor (Fig. 6).
3. Subtract the lathe height measurement from the elbow height measurement. This number represents the approximate height that the mounting platforms should be set at on your lathe stand.

EXAMPLE: 45" (elbow to floor) - 14.5" (base to live center) = 30.5" (stand height)



ASSEMBLY & ADJUSTMENTS

ADJUSTING FOR LATHE LENGTH (FIG. 7)

1. Measure the length of your lathe from center of one mounting hole to the center of the other mounting hole.
2. Loosen the two M10x20 hex bolts (Fig. 7 - 1) on the outer beam (Fig. 7 - 2). Slide the beams inward or outward to the desired length, measuring from the slots in the right mounting platform (Fig. 7- 3) to the slots in the left mounting platform (Fig. 7 -4).
3. Once the desired length has been set, tighten the two M10x20 hex bolts (Fig. 7 - 1) to secure the beams.

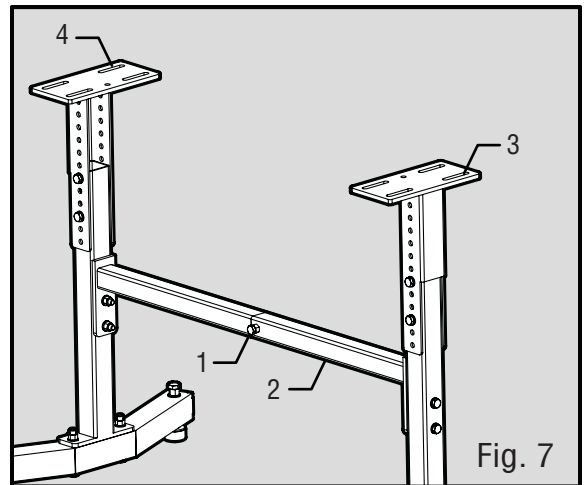


Fig. 7

LEVELING THE LATHE STAND (FIG. 8)

1. On the base (Fig. 8 - 3), loosen the foot's locking M12 hex nut (Fig. 8 - 2) that is set on the M12x100 hex bolt (Fig. 8 - 1). An adjustable wrench is required.
2. Adjust the leveling M12x100 hex bolt (Fig. 8 - 1) and foot (Fig. 8 - 4) to the desired height, leveling the stand.
3. Once set, tighten down the locking M12 hex nut (Fig. 8 - 2) to retain the adjustment.

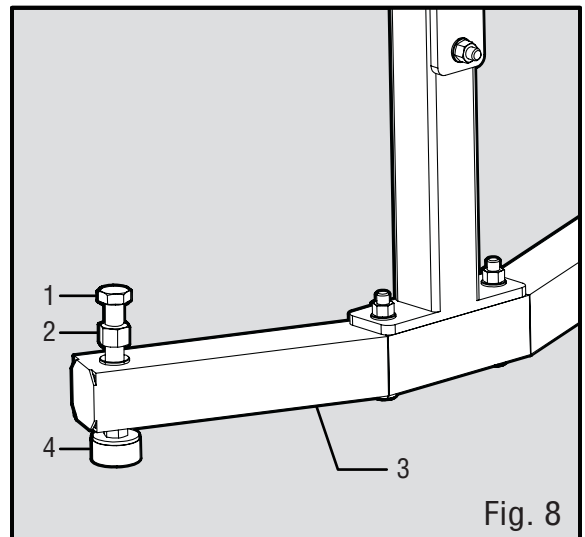


Fig. 8

FASTENING LATHE TO THE STAND (FIG. 9)

Make sure to securely mount your lathe to the stand using fasteners (not included). Fig. 9 shows the recommended mounting configuration. Fully tighten all fasteners.

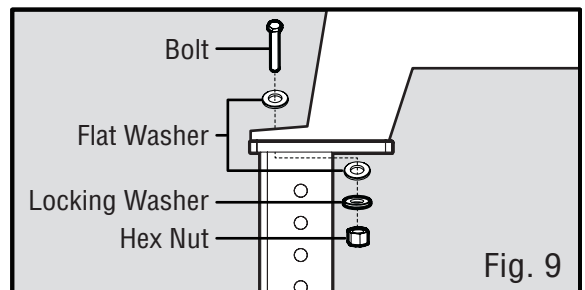


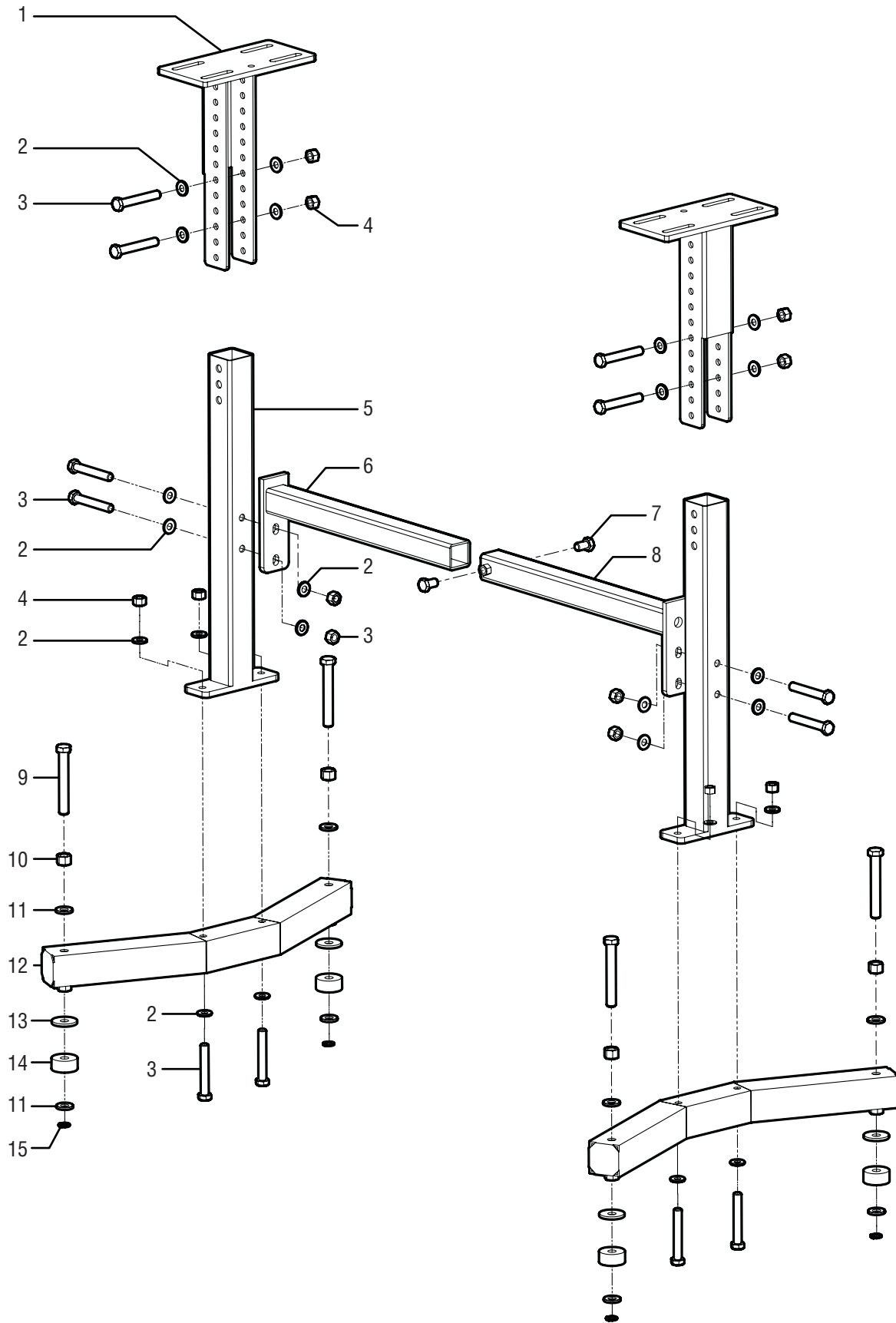
Fig. 9

MAINTENANCE

⚠ WARNING: Before cleaning or carrying out maintenance work, disconnect the lathe from the power source. Never use water or water based products to clean the lathe stand.

1. Periodically check all of the stand bolts and tighten when necessary.
2. Make sure that the lathe stand is level and secure before any turning begins.
3. Remove all saw dust and chips from the lathe stand after each use.

EXPLODED VIEW & PARTS LIST



EXPLODED VIEW & PARTS LIST

No.	Part No.	Description	Qty
1	LA8800-001	Mounting Platform	2
2	LA8800-002	Washer M10	24
3	LA8800-003	Hex Bolt M10x80	12
4	LA8800-004	Hex Nut M10	12
5	LA8800-005	Column	2
6	LA8800-006	Inner Beam	1
7	LA8800-007	Hex Bolt M10x20	2
8	LA8800-008	Outer Beam	1
9	LA8800-009	Hex Bolt M12x100	4
10	LA8800-010	Hex Nut M12	4
11	LA8800-011	Washer M12	8
12	LA8800-012	Base	2
13	LA8800-013	Washer M12	4
14	LA8800-014	Rubber Foot	4
15	LA8800-015	Clip	4

WARRANTY STATEMENT

WEN Products is committed to building tools that are dependable for years. Our warranties are consistent with this commitment and our dedication to quality.

LIMITED WARRANTY OF WEN PRODUCTS FOR HOME USE

GREAT LAKES TECHNOLOGIES, LLC (“Seller”) warrants to the original purchaser only, that all WEN consumer power tools will be free from defects in material or workmanship during personal use for a period of two (2) years from date of purchase or 500 hours of use; whichever comes first. Ninety days for all WEN products if the tool is used for professional or commercial use. Purchaser has 30 days from the date of purchase to report missing or damaged parts.

SELLER’S SOLE OBLIGATION AND YOUR EXCLUSIVE REMEDY under this Limited Warranty and, to the extent permitted by law, any warranty or condition implied by law, shall be the replacement of parts, without charge, which are defective in material or workmanship and which have not been subjected to misuse, alteration, careless handling, misrepair, abuse, neglect, normal wear and tear, improper maintenance, or other conditions adversely affecting the Product or the component of the Product, whether by accident or intentionally, by persons other than Seller. To make a claim under this Limited Warranty, you must make sure to keep a copy of your proof of purchase that clearly defines the Date of Purchase (month and year) and the Place of Purchase. Place of Purchase must be a direct vendor of Great Lakes Technologies, LLC. Purchasing through third party vendors, including but not limited to garage sales, pawn shops, resale shops, or any other secondhand merchant, voids the warranty included with this product. Contact techsupport@wenproducts.com or 1-800-232-1195 with the following information to make arrangements: your shipping address, phone number, serial number, required part numbers, and proof of purchase. Damaged or defective parts and products may need to be sent to WEN before the replacements can be shipped out.

Upon the confirmation of a WEN representative, your product may qualify for repairs and service work. When returning a product for warranty service, the shipping charges must be prepaid by the purchaser. The product must be shipped in its original container (or an equivalent), properly packed to withstand the hazards of shipment. The product must be fully insured with a copy of the proof of purchase enclosed. There must also be a description of the problem in order to help our repairs department diagnose and fix the issue. Repairs will be made and the product will be returned and shipped back to the purchaser at no charge for addresses within the contiguous United States.

THIS LIMITED WARRANTY DOES NOT APPLY TO ITEMS THAT WEAR OUT FROM REGULAR USAGE OVER TIME, INCLUDING BELTS, BRUSHES, BLADES, BATTERIES, ETC. ANY IMPLIED WARRANTIES SHALL BE LIMITED IN DURATION TO TWO (2) YEARS FROM DATE OF PURCHASE. SOME STATES IN THE U.S. AND SOME CANADIAN PROVINCES DO NOT ALLOW LIMITATIONS ON HOW LONG AN IMPLIED WARRANTY LASTS, SO THE ABOVE LIMITATION MAY NOT APPLY TO YOU.

IN NO EVENT SHALL SELLER BE LIABLE FOR ANY INCIDENTAL OR CONSEQUENTIAL DAMAGES (INCLUDING BUT NOT LIMITED TO LIABILITY FOR LOSS OF PROFITS) ARISING FROM THE SALE OR USE OF THIS PRODUCT. SOME STATES IN THE U.S. AND SOME CANADIAN PROVINCES DO NOT ALLOW THE EXCLUSION OR LIMITATION OF INCIDENTAL OR CONSEQUENTIAL DAMAGES, SO THE ABOVE LIMITATION OR EXCLUSION MAY NOT APPLY TO YOU.

THIS LIMITED WARRANTY GIVES YOU SPECIFIC LEGAL RIGHTS, AND YOU MAY ALSO HAVE OTHER RIGHTS WHICH VARY FROM STATE TO STATE IN THE U.S., PROVINCE TO PROVINCE IN CANADA AND FROM COUNTRY TO COUNTRY.

THIS LIMITED WARRANTY APPLIES ONLY TO ITEMS SOLD WITHIN THE UNITED STATES OF AMERICA, CANADA AND THE COMMONWEALTH OF PUERTO RICO. FOR WARRANTY COVERAGE WITHIN OTHER COUNTRIES, CONTACT THE WEN CUSTOMER SUPPORT LINE. FOR WARRANTY PARTS OR PRODUCTS REPAIRED UNDER WARRANTY SHIPPING TO ADDRESSES OUTSIDE OF THE CONTIGUOUS UNITED STATES, ADDITIONAL SHIPPING CHARGES MAY APPLY.