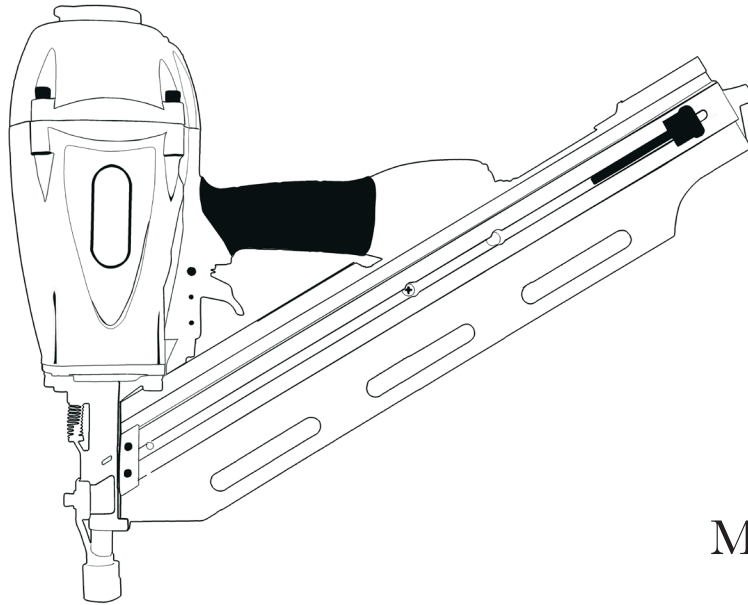




# Clipped Head 34° Framing Nailer



Model # 61798  
[bit.ly/wenvideo](http://bit.ly/wenvideo)


## IMPORTANT:

Your new tool has been engineered and manufactured to WEN's highest standards for dependability, ease of operation, and operator safety. When properly cared for, this product will supply you years of rugged, trouble-free performance. Pay close attention to the rules for safe operation, warnings, and cautions. If you use your tool properly and for its intended purpose, you will enjoy years of safe, reliable service.



## NEED HELP? CONTACT US!

Have product questions? Need technical support?  
Please feel free to contact us at:

 **800-232-1195** (M-F 8AM-5PM CST)

 [techsupport@wenproducts.com](mailto:techsupport@wenproducts.com)

 [WENPRODUCTS.COM](http://WENPRODUCTS.COM)

## TABLE OF CONTENTS

---

Technical Data .....	2
Safety Rules .....	3
Know Your Nailer .....	6
Operation .....	7
Troubleshooting .....	9
Exploded View .....	10
Parts List .....	11
Warranty .....	12

## TECHNICAL DATA

---

Model Number:	61798
Operating Pressure Range:	70 psi - 120 psi
Air Inlet:	1/4" NPT
Fastener Length:	2" to 3-1/2"
Fastener Diameter:	0.113" to 0.131"
Fastener Collation:	30° to 34° paper tape
Air Consumption:	0.2 cube feet/cycle at 100 psi
Magazine Capacity:	100
Weight:	9 lbs

### Package Contents:

One framing nailer, one S3 hex wrench, one S4 hex wrench, one S5 hex wrench, one bottle of oil, one pair of safety glasses, and one operator's manual.

# SAFETY RULES

---

Hello! The purpose of the following safety symbols is to attract your attention to possible dangers. We don't want any of our beloved customers accidentally injuring themselves. The safety symbols and the explanations with them deserve your careful attention and understanding. The safety warnings do not by themselves eliminate any danger. These instructions and warnings are not substitutes for proper accident prevention measures (obviously).

## Symbol Meaning



**Safety Alert Symbol:** Indicates danger, warning, or caution. This may be used in conjunction with other symbols. Always follow the safety precautions to reduce the risk of fire, electric shock and personal injury.

**NOTE:** advising you of information or instructions is vital to the operation or maintenance of the equipment.  
Important

Servicing requires extreme care and knowledge and should be performed only by a qualified service technician.  
**WARNING -** Do not attempt to operate this tool until you have thoroughly read and understood all instructions, safety rules, etc...contained in this manual. Failure to comply can result in accidents involving fire, electric shock, or serious personal injury. Save this operator's manual and review frequently for continuing safe operation and instructing others who may use this tool.

Safe operation of this power tool requires that you read and understand this operator's manual and all labels affixed to the tool. Safety is a combination of common sense, staying alert, and knowing how your tool works.

Safety is a combination of common sense, staying alert and knowing how your item works. **SAVE THESE SAFETY INSTRUCTIONS.**

**WARNING:** To avoid mistakes and serious injury, do not use your tool until the following steps have been read and understood

1. **READ** and become familiar with this entire instruction manual, no matter how boring it may be. **LEARN** the tool's applications, limitations, and possible hazards.
2. **REGULATE AIR PRESSURE.** Use air pressure that is compatible with the ratings on the nameplate of the tool (not to exceed 120 psi or 8.3 bar). Do not connect the tool to a compressor rated at over 175 psi even in the event of a regulator failure.
3. **USE ONLY** clean dry and regulated air. Condensation from an air compressor can rust and damage the internal workings of the tool.
4. **ALWAYS** keep your work area clean, uncluttered, and well lit. **DO NOT** work on floor surfaces that are slippery with sawdust or wax.
5. **KEEP BYSTANDERS AT A SAFE DISTANCE** from the work area, especially when the tool is operating. **NEVER** allow children or pets near the tool.
6. **DO NOT FORCE THE TOOL** to do a job for which it was not designed.

## SAFETY RULES

7. **DRESS FOR SAFETY.** Do not wear loose clothing, gloves, neckties, or jewelry (rings, watches, etc.) when operating the tool. Inappropriate clothing and items can get caught in moving parts and draw you in. **ALWAYS** wear non-slip footwear and tie back long hair.

8. **WEAR A FACE MASK OR DUST MASK** to fight the debris produced by operation and ear protection to fight hearing loss. Everyone in the work area **MUST** wear safety glasses with side shields. These safety glasses must conform to ANSI Z87.1 requirements (approved glasses have “Z87” printed or stamped on them). It is the employer’s responsibility to enforce the use of eye protection equipment by both the tool operator and others in the work area.

**WARNING:** Dust generated from certain materials can be hazardous to your health. Always operate the tool in a well-ventilated area and provide for proper dust removal. Use dust collection systems whenever possible.

9. **ALWAYS USE** an air hose that is rated at a maximum working pressure of at least 180 psi (12.4 bar)

10. **DO NOT USE BOTTLED GASES** to power this tool. Bottled compressed gases such as oxygen, carbon dioxide, nitrogen, hydrogen, propane, acetylene or air are not for use with pneumatic tools. Never use combustible gases or any other reactive gas as a power source for this tool. Danger of explosion and/or serious personal injury may result.

11. **USE COUPLINGS** that relieve all pressure from the tool when it is disconnected from the power supply. Use hose connectors that shut off the air supply from the compressor when the tool is disconnected.

12. **DISCONNECT** tool from air supply when not in use. Remove fasteners from magazine before leaving the area or passing the tool to another operator. Do not climb ladders, stairs, scaffoldings, etc. without disconnecting the tool. Do not carry a connected tool to another work area. Do not make adjustments, remove magazine, perform maintenance or clear jammed fasteners while connected to the air supply. If the contact trip is adjusted when the tool is connected to the air supply with loaded nails, accidental discharge may occur.

13. **DO NOT LOAD FASTENERS** before connecting the tool to the air supply. Otherwise, fasteners are at risk of being fired during connection. The tool’s driving mechanism may cycle when it is connected to the air supply. Do not load fasteners when the trigger or the safety is pressed down in order to prevent unintentional firings of a fastener.

14. **DO NOT REMOVE,** tamper with, or otherwise cause the tool, trigger or contact trip to become inoperable. Do not tape or tie the trigger or contact trip in the ON position. Do not remove springs from the contact trip. Make daily inspections for free movement of the trigger and contact trip. Uncontrolled discharge may result. Do not alter or modify the tool in any way.

15. **DO NOT OVERREACH.** Keep proper footing and balance at all times. Wear oil-resistant rubber-soled footwear. Keep the floor clear of oil, scrap, and other debris.

16. **MAINTAIN TOOLS PROPERLY.** **ALWAYS** keep tools clean and in good working order. Follow instructions for lubricating and changing accessories. Inspect tool before use. Do not operate if any portion of the tool, trigger, or contact trip is damaged, inoperable, disconnected, or altered. Leaking air, damaged parts, or missing parts should be repaired or replaced before use.

## SAFETY RULES

---

17. **ALWAYS ASSUME** that the tool contains fasteners. Do not point the tool at co-workers or yourself at any time, even if you think it will be really funny.
18. **MAKE THE WORKSHOP CHILDPROOF.** Use padlocks and master switches and **ALWAYS** remove starter keys. Keep bystanders, children and visitors away while operating the power tool. Distractions can cause you to lose control. When tool is not in use, it should be locked away in a safe place.
19. **DO NOT** operate the tool if you are under the influence of drugs, alcohol, or medication that may affect your ability to properly use the tool.
20. **REMOVE FINGER FROM TRIGGER** when not driving fasteners. Never carry the tool with your finger on the trigger.
21. **MAKE SURE HOSE** is free of obstructions or snags. Entangled or snarled hoses can cause a loss of balance.
22. **DO NOT DISCHARGE** fasteners into open air, concrete, stone, extremely hard woods, knots or any material too hard for the fastener to penetrate. Do not use the body of the tool or top cap as a hammer. Discharged fasteners may follow unexpected paths and cause bodily injury.
23. **DO NOT DRIVE FASTENERS** near the edge of your work material. The workpiece may split, causing the fastener to ricochet, injuring you or a co-worker. Be aware that the nail may follow the grain of the wood, causing it to protrude unexpectedly from the side of the work material. Drive the nail perpendicular to the grain to reduce risk of injury.
24. **DO NOT DRIVE NAILS** onto the heads of other fasteners. Do not use the tool at too steep of an angle. Personal injury from strong recoil, jammed fasteners, or ricocheted nails may result.
25. **BE AWARE** of material thickness when using the nailer. A protruding nail may cause injury.
26. **KNOW** that when the tool is being utilized at pressures on the high end of its operating range, nails can be driven completely through thin or very soft work material. Make sure the pressure in the compressor is set so that nails are set into the material and not pushed completely through.
27. **KEEP HANDS AND BODY PARTS CLEAR** of immediate work area. Hold workpiece with clamps when necessary to keep body parts out of potential harm. Be sure the workpiece is properly secured before pressing the nailer against the material. The contact trip may cause the work material to shift unexpectedly.
28. **DO NOT USE THE TOOL** in the presence of flammable dust, gases or fumes. The tool may produce a spark that could ignite gases causing a fire. Driving a nail into another nail may also cause a spark.
29. **KEEP FACE AND BODY PARTS** away from the back of the tool cap when working in restricted areas. Sudden recoil can result in impact to the body, especially when nailing into hard or dense material.
30. **GRIP THE TOOL FIRMLY** to maintain control while still allowing it to recoil away from the work surface as the fastener is driven. In bump action mode (contact actuation mode), allowing the contact trip to recontact the work surface before the trigger is released will fire an unwanted fastener.

## SPECIFIC SAFETY RULES FOR FRAMING NAILER

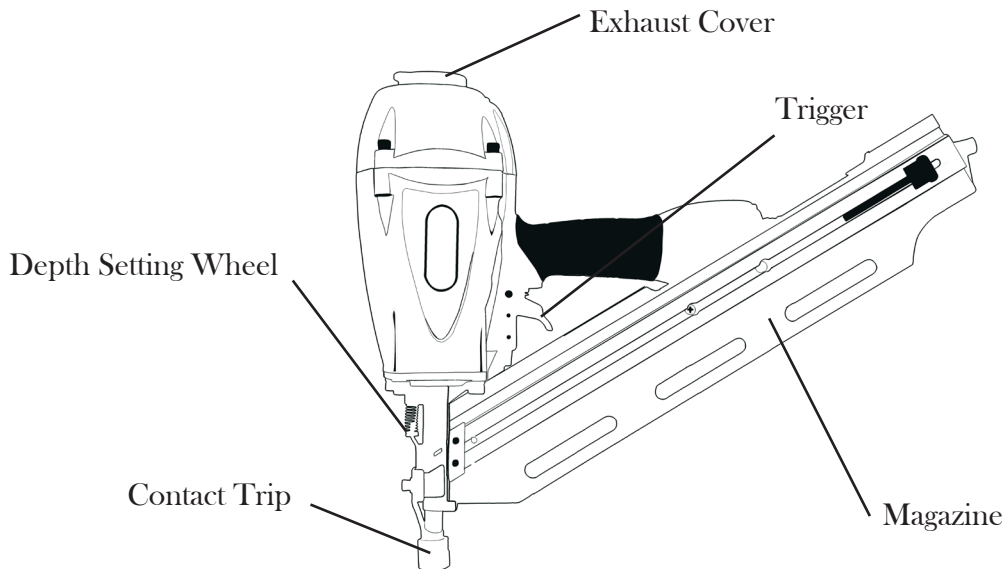
---

31. **KEEP ALERT.** Watch what you are doing. Use common sense. Do not operate any tool when you are tired.
32. **USE PROPER EXTENSION CORDS.** When using an air compressor outdoors, use only rounded jackets extensions cords. These are intended for outside use. See manufacturer's manual for the AWG required for the compressor's amperage draw.
33. **PAY ATTENTION TO AIR HOSE AND THEIR CONNECTIONS.** Don't trip over the hoses. It isn't fun. Also, make sure the connections are nice and tight.
34. **WHEN CONNECTING TO THE AIR SUPPLY** the tool is at risk of possibly firing fasteners. Therefore, remove all the fasteners before connecting to the air.
35. **DO NOT DEPRESS THE CONTACT TRIP OR THE TRIGGER WHEN LOADING.**
36. **IF THE FASTENERS ARE JAMMED,** disconnect the tool from the air supply first before removing the jammed fasteners.

**WARNING:** The warnings, cautions, and instructions explained in this manual cannot cover all possible conditions and situations that may occur. It must be understood by the operator that **COMMON SENSE AND CAUTION ARE FACTORS WHICH CANNOT BE BUILT INTO THIS PRODUCT, BUT MUST BE SUPPLIED BY THE OPERATOR.** So don't do anything stupid.

## KNOW YOUR NAILER

---



## OPERATION



**WARNING** - if any parts are missing, do not operate this tool until the missing parts are replaced. Failure to do so could result in a possibly serious personal injury.

### LUBRICATION

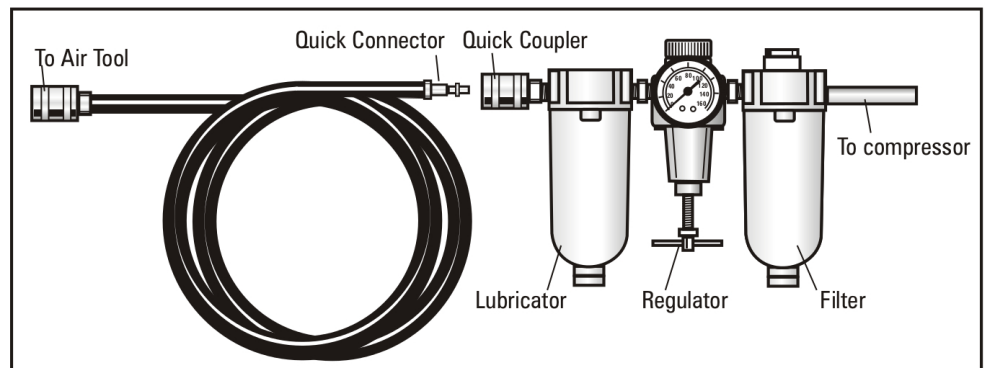
This tool requires lubrication before each use (especially the first use). If an inline oiler is used, manual lubrication through the air inlet is not required.

Note: The work surface can become damaged by excessive lubrication. Proper lubrication is the owner's responsibility. Failure to lubricate the tool properly will dramatically shorten the life of the tool and void the warranty.

1. Disconnect the air supply from the tool to add lubricant.
2. Turn the tool so the air inlet is facing up. Place 4-5 drops of 30W non-detergent oil (included) into the air inlet.
3. After adding oil, run toll briefly. Wipe off any excess oil from the exhaust.

### RECOMMENDED HOOKUP

Your air tool is fully assembly when you receive it. Before using it, attach the air line and desired air system accessories. See the diagram on the right for the recommended accessories and connection order. Be sure the air hose is depressurized when installing or removing adapters to the air line.



### OPERATING AIR PRESSURE: 70-120 psi

Select the operating air pressure within this range for best tool performance.

**DO NOT EXCEED THIS RECOMMENDED OPERATING PRESSURE.**

### LOADING THE FASTENERS

**Caution:** Always disconnect the tool from the air supply before loading the nailers.

1. Pull feeder shoe all the way to the rear of the magazine until it is locked by the lock tab.
2. Insert a strip of nails into the rear of the magazine. Do not load while contacting a workpiece or pressing the trigger.
3. Pull the feeder shoe and press the lock tab to unlock the feeder shoe. The feeder shoe will slide forward and hold the nails in place.

# OPERATION

---

## ADJUSTING THE DIRECTIONAL EXHAUST DEFLECTOR

Adjust the directional exhaust deflector so that the exhaust air blast is directed away from the operator. Grasp the deflector and rotate it to the desired position for your current application.



## USING THE NAILER

This nailer operates in a single sequential trigger mode. Nails can only be driven one way. First press the contact trip into the workpiece, then pull trigger.



**WARNING:** To reduce risk of serious injury from accidental actuation when attempting to adjust depth, **ALWAYS:**

- Disconnect the air supply.
- Avoid contact with trigger during adjustments.

## ADJUSTING THE DRIVING DEPTH

1. To drive the nail shallower, move the safety bracket down using the included wrenches.
2. To drive a nail deeper, move the safety bracket up.

## CLEARING A JAMMED NAIL



**WARNING:** Disconnect air line from tool and remove fasteners from magazine before making adjustments or else personal injury may result.

If a nail becomes jammed in the nosepiece, keep the tool pointed away from you and follow these instructions to clear:

1. Disconnect the air supply from the tool.
2. Pull the feeder shoe all the way back to the rear of the magazine until it is locked by the lock tab.
3. Remove the jammed nail using pliers if necessary.
4. If the piston assembly is in the down position, insert screwdriver or other rod into the nosepiece and push the piston back into its upright position.
5. Remove the rod and close the magazine.
6. Make sure the trigger and contact trip move freely without sticking or binding before attaching the air supply and loading nails back into the magazine.
7. Unlock the feeder shoe by depressing the lock tab.



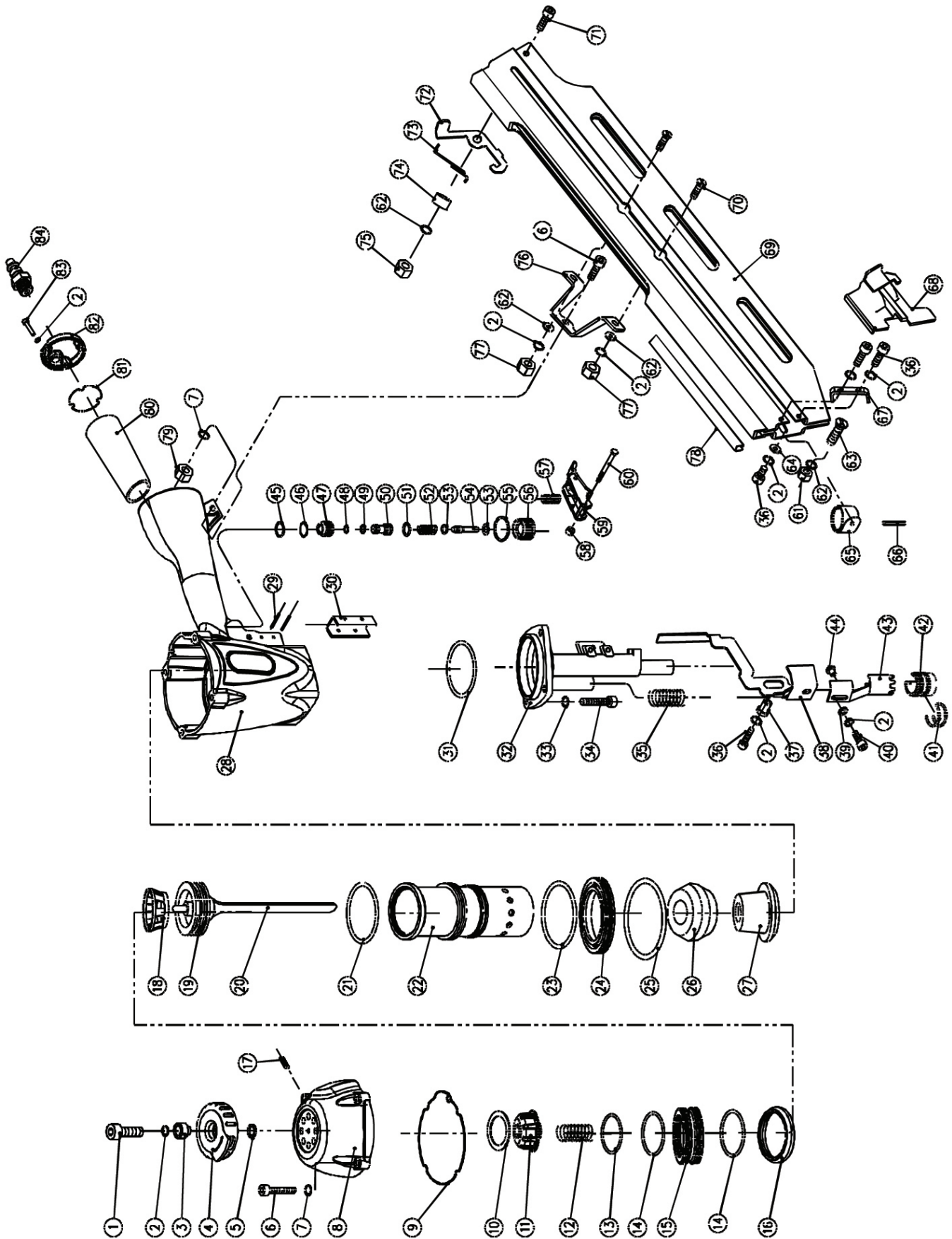
## TROUBLESHOOTING

---

**Caution:** Stop using the tool immediately if any of the following problems occur. Serious personal injury could result.

Problem	Cause	Solution
Air leaking at trigger area	<ol style="list-style-type: none"> <li>1. O-ring in trigger valve stem is worn and damaged.</li> <li>2. O-ring in trigger valve head is worn and damaged.</li> <li>3. Foreign matter is preventing the trigger from moving to OFF position.</li> </ol>	<ol style="list-style-type: none"> <li>1. Check/replace O-ring/lubricate.</li> <li>2. Check/replace O-ring/lubricate.</li> <li>3. Clean the tool/lubricate.</li> </ol>
Failure to start tool.	<ol style="list-style-type: none"> <li>1. Tool dry, lack lubrication.</li> <li>2. The spring in the cylinder cap is damaged.</li> <li>3. Valve sticks with cylinder cap.</li> <li>4. No compressed air.</li> </ol>	<ol style="list-style-type: none"> <li>1. Use pneumatic tool oil.</li> <li>2. Replace the spring in the cylinder cap.</li> <li>3. Disassemble/check/lubricate.</li> <li>4. Check air supply.</li> </ol>
Blade driving fasteners too deeply.	<ol style="list-style-type: none"> <li>1. Safe bracket position is not correct.</li> <li>2. Air pressure is too high.</li> </ol>	<ol style="list-style-type: none"> <li>1. Move the safety bracket down.</li> <li>2. Decrease air pressure.</li> </ol>
Fasteners are jammed.	Fasteners are wrong size.	Use recommended fasteners.

# EXPLODED VIEW



## PARTS LIST

---

Item	Stock #	Description
1	61798-001	Screw
2	61798-002	Spring washer
3	61798-003	Bushing
4	61798-004	Exhaust cover
5	61798-005	Washer
6	61798-006	Screw
7	61798-007	Spring washer
8	61798-008	Cylinder cap
9	61798-009	Gasket
10	61798-010	Washer
11	61798-011	Valve seal
12	61798-012	Spring
13	61798-013	O-ring
14	61798-014	O-ring
15	61798-015	Valve
16	61798-016	Cylinder seal
17	61798-017	Screw
18	61798-018	Collar
19	61798-019	O-ring
20	61798-020	Piston assembly
21	61798-021	O-ring
22	61798-022	Cylinder
23	61798-023	O-ring
24	61798-024	Restrictive seal
25	61798-025	O-ring
26	61798-026	Bumper A
27	61798-027	Bumper B
28	61798-028	Body
29	61798-029	Spring pin
30	61798-030	Safe guide
31	61798-031	O-ring
32	61798-032	Nose
33	61798-033	Spring washer
34	61798-034	Screw
35	61798-035	Spring
36	61798-036	Screw
37	61798-037	Bushing
38	61798-038	Safe bracket A
39	61798-039	Washer
40	61798-040	Screw
41	61798-041	Rubber hoop
42	61798-042	Rubber sleeve

Item	Stock #	Description
43	61798-043	Safe bracket B
44	61798-044	Screw nut
45	61798-045	O-ring
46	61798-046	O-ring
47	61798-047	Valve set
48	61798-048	O-ring
49	61798-049	O-ring
50	61798-050	Trigger valve head
51	61798-051	O-ring
52	61798-052	Spring
53	61798-053	O-ring
54	61798-054	Trigger valve stem
55	61798-055	O-ring
56	61798-056	Trigger valve guide
57	61798-057	Washer
58	61798-058	Spring
59	61798-059	Trigger assembly
60	61798-060	Pin
61	61798-061	Nut
62	61798-062	Washer
63	61798-063	Screw
64	61798-064	Washer
65	61798-065	Coil assembly
66	61798-066	Pin
67	61798-067	Stopped piece
68	61798-068	Feeder shoe
69	61798-069	Magazine
70	61798-070	Screw
71	61798-071	Screw
72	61798-072	Lock
73	61798-073	Torsion spring
74	61798-074	Bushing
75	61798-075	Nut
76	61798-076	Support
77	61798-077	Nut
78	61798-078	Rail
79	61798-079	Nut
80	61798-080	Soft grip sleeve
81	61798-081	Gasket
82	61798-082	End cap
83	61798-083	Screw
84	61798-084	Air plug

## LIMITED ONE YEAR WARRANTY

---

WEN Products is committed to building tools that are dependable for years. Our warranties are consistent with this commitment and our dedication to quality.

### LIMITED WARRANTY OF WEN CONSUMER POWER TOOLS PRODUCTS FOR HOME USE

GREAT LAKES TECHNOLOGIES, LLC (“Seller”) warrants to the original purchaser only, that all WEN consumer power tools will be free from defects in material or workmanship for a period of one (1) year from date of purchase. Ninety days for all WEN products, if the tool is used for professional use.

**SELLER’S SOLE OBLIGATION AND YOUR EXCLUSIVE REMEDY** under this Limited Warranty and, to the extent permitted by law, any warranty or condition implied by law, shall be the repair or replacement of parts, without charge, which are defective in material or workmanship and which have not been misused, carelessly handled, or misrepaired by persons other than Seller or Authorized Service Center. To make a claim under this Limited Warranty, you must make sure to keep a copy of your proof of purchase that clearly defines the Date of Purchase (month and year) and the Place of Purchase. Place of purchase must be a direct vendor of Great Lakes Technologies, LLC. Third party vendors such as garage sales, pawn shops, resale shops, or any other secondhand merchant void the warranty included with this product. Contact [techsupport@wenproducts.com](mailto:techsupport@wenproducts.com) or 1-800-232-1195 to make arrangements for repairs and transportation.

When returning a product for warranty service, the shipping charges must be prepaid by the purchaser. The product must be shipped in its original container (or an equivalent), properly packed to withstand the hazards of shipment. The product must be fully insured with a copy of the warranty card and/or the proof of purchase enclosed. There must also be a description of the problem in order to help our repairs department diagnose and fix the issue. Repairs will be made and the product will be returned and shipped back to the purchaser at no charge.

**THIS LIMITED WARRANTY DOES NOT APPLY TO ACCESSORY ITEMS THAT WEAR OUT FROM REGULAR USAGE OVER TIME INCLUDING BELTS, BRUSHES, BLADES, ETC.**

**ANY IMPLIED WARRANTIES SHALL BE LIMITED IN DURATION TO ONE (1) YEAR FROM DATE OF PURCHASE. SOME STATES IN THE U.S., SOME CANADIAN PROVINCES DO NOT ALLOW LIMITATIONS ON HOW LONG AN IMPLIED WARRANTY LASTS, SO THE ABOVE LIMITATION MAY NOT APPLY TO YOU.**

**IN NO EVENT SHALL SELLER BE LIABLE FOR ANY INCIDENTAL OR CONSEQUENTIAL DAMAGES (INCLUDING BUT NOT LIMITED TO LIABILITY FOR LOSS OF PROFITS) ARISING FROM THE SALE OR USE OF THIS PRODUCT. SOME STATES IN THE U.S. AND SOME CANADIAN PROVINCES DO NOT ALLOW THE EXCLUSION OR LIMITATION OF INCIDENTAL OR CONSEQUENTIAL DAMAGES, SO THE ABOVE LIMITATION OR EXCLUSION MAY NOT APPLY TO YOU.**

**THIS LIMITED WARRANTY GIVES YOU SPECIFIC LEGAL RIGHTS, AND YOU MAY ALSO HAVE OTHER RIGHTS WHICH VARY FROM STATE TO STATE IN THE U.S., PROVINCE TO PROVINCE IN CANADA AND FROM COUNTRY TO COUNTRY.**

**THIS LIMITED WARRANTY APPLIES ONLY TO PORTABLE ELECTRIC TOOLS, BENCH POWER TOOLS, OUTDOOR POWER EQUIPMENT AND PNEUMATIC TOOLS SOLD WITHIN THE UNITED STATES OF AMERICA, CANADA AND THE COMMONWEALTH OF PUERTO RICO. FOR WARRANTY COVERAGE WITHIN OTHER COUNTRIES, CONTACT THE WEN CUSTOMER SUPPORT LINE.**