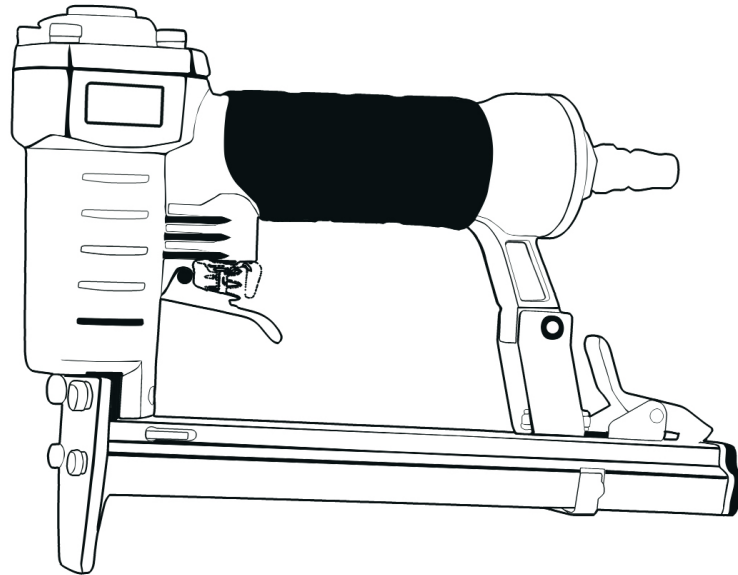




# 20-GAUGE 1/4-INCH CROWN STAPLER



Model # 61702  
[bit.ly/wenvideo](http://bit.ly/wenvideo)

## IMPORTANT:

Your new tool has been engineered and manufactured to WEN's highest standards for dependability, ease of operation, and operator safety. When properly cared for, this product will supply you years of rugged, trouble-free performance. Pay close attention to the rules for safe operation, warnings, and cautions. If you use your tool properly and for intended purpose, you will enjoy years of safe, reliable service.

## NEED HELP? CONTACT US!

Have product questions? Need technical support?  
Please feel free to contact us at:



**800-232-1195** (M-F 8AM-5PM CST)



**techsupport@wenproducts.com**



**WENPRODUCTS.COM**



## TABLE OF CONTENTS

---

Technical Data .....	2
Safety Rules .....	3
Know Your Stapler .....	6
Operation .....	7
Troubleshooting .....	9
Exploded View .....	10
Parts List .....	11
Warranty .....	12

## TECHNICAL DATA

---

Model Number:	61702
Operating Pressure Range:	70 psi - 100 psi
Air Inlet:	1/4" NPT
Staple Length:	1/4" - 9/16"
Staple Size:	20 Gauge
Crown:	3/8"
Staple Capacity:	100
Air Consumption:	0.28 SCFM
Weight:	1.8 lbs

### Package Contents:

One stapler, one S3 hex wrench, one S4 hex wrench, one oil bottle, one operator's manual.

# SAFETY RULES

---

Hello! The purpose of the following safety symbols is to attract your attention to possible dangers. We don't want any of our beloved customers accidentally injuring themselves. The safety symbols and the explanations with them deserve your careful attention and understanding. The safety warnings do not by themselves eliminate any danger. These instructions and warnings are not substitutes for proper accident prevention measures (obviously).

## Symbol Meaning



**Safety Alert Symbol:** Indicates danger, warning, or caution. This may be used in conjunction with other symbols. Always follow the safety precautions to reduce the risk of fire, electric shock and personal injury.

**NOTE:** advising you of information or instructions is vital to the operation or maintenance of the equipment.

Servicing requires extreme care and knowledge and should be performed only by a qualified service technician.

**WARNING** - Do not attempt to operate this tool until you have thoroughly read and understood all instructions, safety rules, etc...contained in this manual. Failure to comply can result in accidents involving fire, electric shock, or serious personal injury. Save this operator's manual and review frequently for continuing safe operation and instructing others who may use this tool.

Safe operation of this power tool requires that you read and understand this operator's manual and all labels affixed to the tool. Safety is a combination of common sense, staying alert, and knowing how your tool works.

Safety is a combination of common sense, staying alert and knowing how your item works. **SAVE THESE SAFETY INSTRUCTIONS.**

**WARNING:** To avoid mistakes and serious injury, do not use your tool until the following steps have been read and understood

1. **READ** and become familiar with this entire instruction manual, no matter how boring it may be. **LEARN** the tool's applications, limitations, and possible hazards.
2. **REGULATE AIR PRESSURE.** Use air pressure that is compatible with the ratings on the nameplate of the tool (not to exceed 100 psi or 6.9 bar). Do not connect the tool to a compressor rated at over 175 psi even in the event of a regulator failure.
3. **USE ONLY** clean dry and regulated air. Condensation from an air compressor can rust and damage the internal workings of the tool.
4. **ALWAYS** keep your work area clean, uncluttered, and well lit. **DO NOT** work on floor surfaces that are slippery with sawdust or wax.
5. **KEEP BYSTANDERS AT A SAFE DISTANCE** from the work area, especially when the tool is operating. **NEVER** allow children or pets near the tool.
6. **DO NOT FORCE THE TOOL** to do a job for which it was not designed.

## SAFETY RULES

7. **DRESS FOR SAFETY.** Do not wear loose clothing, gloves, neckties, or jewelry (rings, watches, etc.) when operating the tool. Inappropriate clothing and items can get caught in moving parts and draw you in. **ALWAYS** wear non-slip footwear and tie back long hair.

8. **WEAR A FACE MASK OR DUST MASK** to fight the debris produced by operation and ear protection to fight hearing loss. Everyone in the work area **MUST** wear safety glasses with side shields. These safety glasses must conform to ANSI Z87.1 requirements (approved glasses have “Z87” printed or stamped on them). It is the employer’s responsibility to enforce the use of eye protection equipment by both the tool operator and others in the work area.

**WARNING:** Dust generated from certain materials can be hazardous to your health. Always operate the tool in a well-ventilated area and provide for proper dust removal. Use dust collection systems whenever possible.

9. **ALWAYS USE** an air hose that is rated at a maximum working pressure of at least 150 psi (10.4 bar)

10. **DO NOT USE BOTTLED GASES** to power this tool. Bottled compressed gases such as oxygen, carbon dioxide, nitrogen, hydrogen, propane, acetylene or air are not for use with pneumatic tools. Never use combustible gases or any other reactive gas as a power source for this tool. Danger of explosion and/or serious personal injury may result.

11. **USE COUPLINGS** that relieve all pressure from the tool when it is disconnected from the power supply. Use hose connectors that shut off the air supply from the compressor when the tool is disconnected.

12. **DISCONNECT** tool from air supply when not in use. Remove fasteners from magazine before leaving the area or passing the tool to another operator. Do not climb ladders, stairs, scaffoldings, etc. without disconnecting the tool. Do not carry a connected tool to another work area. Do not make adjustments, remove magazine, perform maintenance or clear jammed fasteners while connected to the air supply.

13. **DO NOT LOAD FASTENERS** before connecting the tool to the air supply. Otherwise, fasteners are at risk of being fired during connection. The tool’s driving mechanism may cycle when it is connected to the air supply. Do not load fasteners when the trigger or the safety is pressed down in order to prevent unintentional firings of a fastener.

14. **DO NOT REMOVE,** tamper with, or otherwise cause the tool or trigger to become inoperable. Do not tape or tie the trigger in the ON position. Make daily inspections for free movement of the trigger. Uncontrolled discharge may result. Do not alter or modify the tool in any way.

15. **DO NOT OVERREACH.** Keep proper footing and balance at all times. Wear oil-resistant rubber-soled footwear. Keep the floor clear of oil, scrap, and other debris.

16. **MAINTAIN TOOLS PROPERLY. ALWAYS** keep tools clean and in good working order. Follow instructions for lubricating and changing accessories. Inspect tool before use. Do not operate if any portion of the tool or trigger is damaged, inoperable, disconnected, or altered. Leaking air, damaged parts, or missing parts should be repaired or replaced before use.

17. **ALWAYS ASSUME** that the tool contains fasteners. Do not point the tool at coworkers or yourself at any time, even if you think it will be really funny.

## SAFETY RULES

---

18. **MAKE THE WORKSHOP CHILDPROOF.** Use padlocks and master switches and **ALWAYS** remove starter keys. Keep bystanders, children and visitors away while operating the power tool. Distractions can cause you to lose control. When tool is not in use, it should be locked away in a safe place.
19. **DO NOT** operate the tool if you are under the influence of drugs, alcohol, or medication that may affect your ability to properly use the tool.
20. **REMOVE FINGER FROM TRIGGER** when not driving fasteners. Never carry the tool with your finger on the trigger.
21. **MAKE SURE HOSE** is free of obstructions or snags. Entangled or snarled hoses can cause a loss of balance.
22. **DO NOT DISCHARGE** fasteners into open air, concrete, stone, extremely hard woods, knots or any material too hard for the fastener to penetrate. Do not use the body of the tool or top cap as a hammer. Discharged fasteners may follow unexpected paths and cause bodily injury.
23. **DO NOT DRIVE FASTENERS** near the edge of your work material. The workpiece may split, causing the fastener to ricochet, injuring you or a co-worker. Be aware that the staple may follow the grain of the wood, causing it to protrude unexpectedly from the side of the work material. Drive the staple perpendicular to the grain to reduce risk of injury.
24. **DO NOT DRIVE STAPLES** onto the heads of other fasteners. Do not use the tool at too steep of an angle. Personal injury from strong recoil, jammed fasteners, or ricocheted staples may result.
25. **BE AWARE** of material thickness when using the stapler. A protruding staple may cause injury.
26. **KNOW** that when the tool is being utilized at pressures on the high end of its operating range, staples can be driven completely through thin or very soft work material. Make sure the pressure in the compressor is set so that staples are set into the material and not pushed completely through.
27. **KEEP HANDS AND BODY PARTS CLEAR** of immediate work area. Hold workpiece with clamps when necessary to keep body parts out of potential harm. Be sure the workpiece is properly secured before pressing the stapler against the material.
28. **DO NOT USE THE TOOL** in the presence of flammable dust, gases or fumes. The tool may produce a spark that could ignite gases causing a fire. Driving a staple into another staple may also cause a spark.
29. **KEEP FACE AND BODY PARTS** away from the back of the tool cap when working in restricted areas. Sudden recoil can result in impact to the body, especially when stapling into hard or dense material.
30. **GRIP THE TOOL FIRMLY** to maintain control while still allowing it to recoil away from the work surface as the fastener is driven. In bump action mode (contact actuation mode), be careful as to not fire an unwanted fastener.

## SAFETY RULES

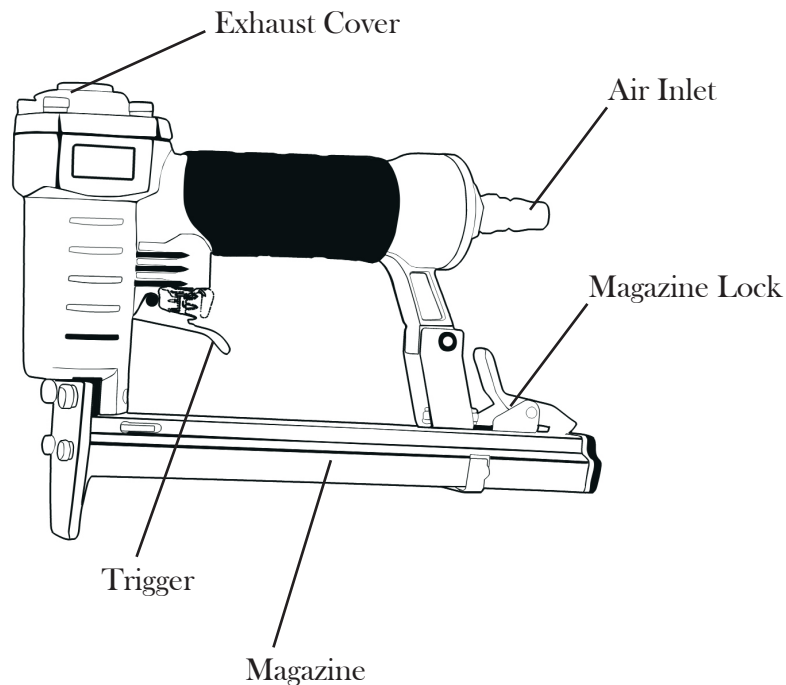
---

31. **KEEP ALERT.** Watch what you are doing. Use common sense. Do not operate any tool when you are tired.
32. **USE PROPER EXTENSION CORDS.** When using an air compressor outdoors, use only rounded jackets extensions cords. These are intended for outside use. See manufacturer's manual for the AWG required for the compressor's amperage draw.
33. **PAY ATTENTION TO AIR HOSE AND THEIR CONNECTIONS.** Don't trip over the hoses. It isn't fun. Also, make sure the connections are nice and tight.
34. **WHEN CONNECTING TO THE AIR SUPPLY** the tool is at risk of possibly firing fasteners. Therefore, remove all the fasteners before connecting to the air.
35. **DO NOT PRESS THE TRIGGER WHEN LOADING.**
36. **IF THE FASTENERS ARE JAMMED,** disconnect the tool from the air supply first before removing the jammed fasteners.

**WARNING:** The warnings, cautions, and instructions explained in this manual cannot cover all possible conditions and situations that may occur. It must be understood by the operator that **COMMON SENSE AND CAUTION ARE FACTORS WHICH CANNOT BE BUILT INTO THIS PRODUCT, BUT MUST BE SUPPLIED BY THE OPERATOR.** So don't do anything stupid.

## KNOW YOUR STAPLER

---



# OPERATION



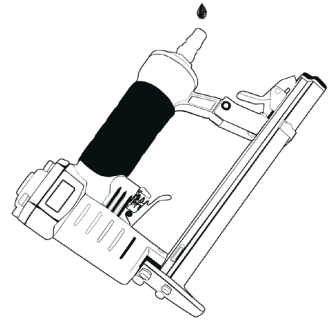
**WARNING** - if any parts are missing, do not operate this tool until the missing parts are replaced. Failure to do so could result in possible serious personal injury.

## LUBRICATION

This tool requires lubrication before each use (especially the first use). If an in-line oiler is used, manual lubrication through the air inlet is not required.

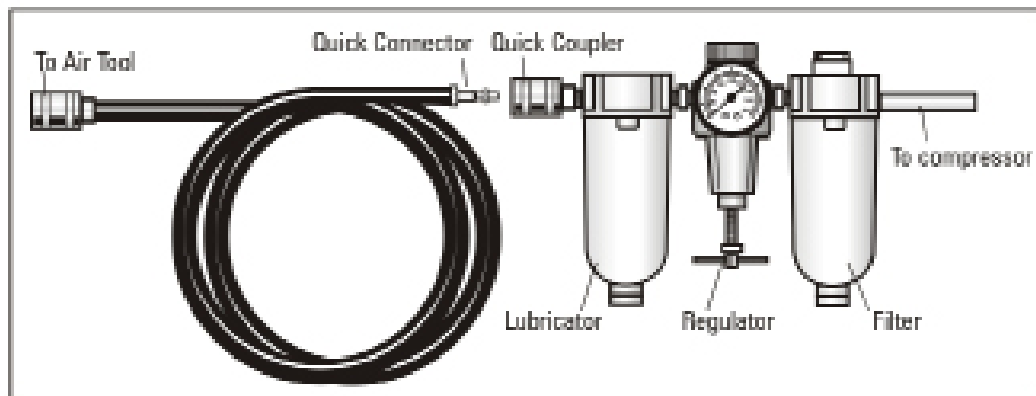
Note: the work surface can become damaged by excessive lubrication. Proper lubrication is the owner's responsibility. Failure to lubricate the tool properly will drastically shorten the life of the tool and void the warranty.

1. Disconnect the air supply from the tool to add lubricant.
2. Turn the tool so the air inlet is facing up. Place 4-5 drops of 30W non-detergent oil (included) into the air inlet.
3. After adding oil, run toll briefly. Wipe off any excess oil from the exhaust.



## Recommended Hookup

Your air tool is fully assembly when you receive it. Before using it, attach the air line and desired air system accessories. See below for the recommended accessories and connection order. Be sure the air hose is depressurized when installing or removing adapters to the air line.



**OPERATING AIR PRESSURE:** 70-100 psi

Select the operating air pressure within this range for best tool performance.

**DO NOT EXCEED THIS RECOMMENDED OPERATING PRESSURE.**

# OPERATION

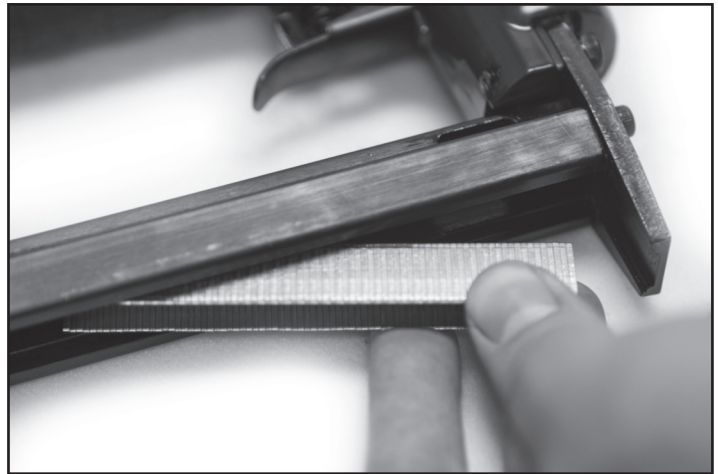
## LOADING THE STAPLE



**Warning:** TO PREVENT SERIOUS INJURY FROM ACCIDENTAL OPERATION, BEFORE LOADING:

- Wear ANSI-approved safety goggles with side shields. Other people in the work area must also wear ANSI-approved impact safety goggles with side shields.
- Release the trigger.
- Detach the air supply.
- Attempt to fire the tool into a piece of scrap wood to ensure that it is incapable of firing any fasteners.

1. Only use the proper size and type of staple with this stapler.
2. Press the magazine lock to open up the magazine. Open the magazine completely by pulling the movable magazine unit.
3. Turn the stapler upside down. Place a full clip of staples inside the magazine so the pointed ends of the staples are directed away from the stapler.
4. Keep fingers clear while sliding the movable magazine unit closed until it clicks shut.
5. Rotate the exhaust deflector to redirect exhaust air away from you.



## GENERAL OPERATING INSTRUCTIONS

1. Always test the tool before each use.
2. If an automatic oiler is not used, add a few drops of Pneumatic Tool Oil to the airline connection before use. Add a few drops more after each hour of continual use.
3. Place the head of the stapler against the surface you wish to staple. Be sure to keep your hands, fingers and other body parts away from the nozzle.
4. Press the trigger to activate the stapler.
5. If the tool requires more force to accomplish the task, verify that the tool receives sufficient, unobstructed airflow (CFM) and increase the pressure (PSI) output of the regulator up to the maximum air pressure rating of this tool.



**CAUTION! TO PREVENT TOOL AND ACCESSORY FAILURE, RESULTING IN INJURY:** Do not exceed the tool's maximum air pressure rating of 100 PSI. If the tool still does not have sufficient force at maximum pressure and sufficient airflow, then a larger tool may be required.

After use, to prevent accidents:

1. Release the trigger.
2. Detach the air supply.
3. Attempt to fire the tool into a piece of scrap wood to ensure that it is disconnected and is incapable of firing any fasteners.
4. Release the trigger again.
5. Clean external surfaces with clean, dry cloth.
6. Store indoors and out of reach of children and unauthorized people.



## OPERATION

---

### CLEARING A JAMMED STAPLE

**WARNING:** Disconnect the air line from the stapler and remove staples from the magazine before making adjustments or personal injury may result.

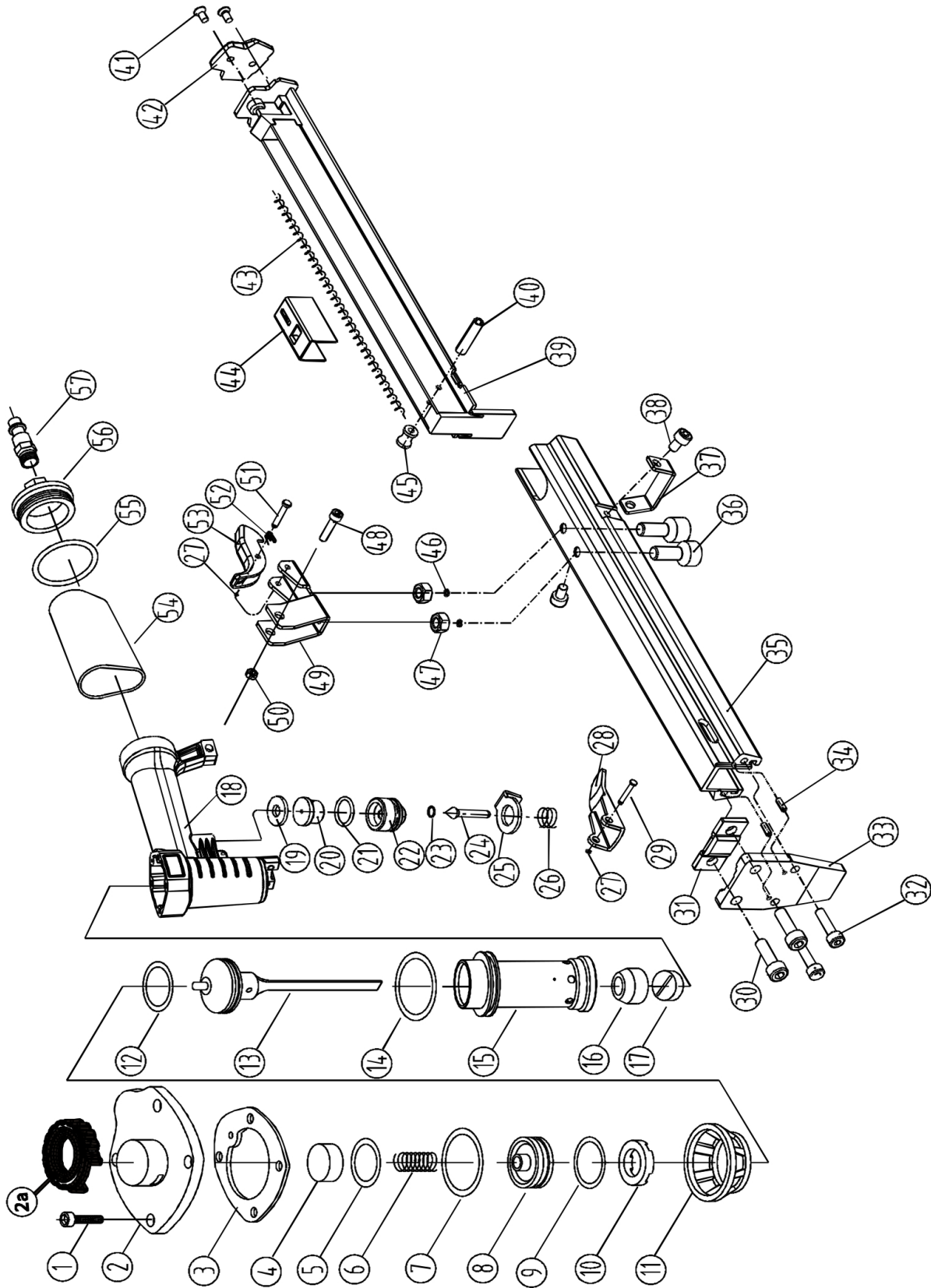
1. If a staple is jammed in the discharge area, remove it with pliers.
2. If a staple is jammed in the magazine, pull the magazine unit all the way back to the engaged position. Use a screwdriver to release the jammed fastener by probing the openings in the magazine.
3. Pull out the jammed staple and the remainder of the staple strip that is still in the magazine. Dispose of the remaining staple strip; it may be bent or damaged in some other way.
4. If you are unable to clear the staple jam using the method prescribed above, the tool should be taken to a qualified service technician for proper servicing.

## TROUBLESHOOTING

---

Problem	Cause	Solution
Air leaking at trigger area	<ol style="list-style-type: none"><li>1. O-ring in trigger valve stem is worn and damaged.</li><li>2. O-ring in trigger valve head is worn and damaged.</li><li>3. Foreign matter is preventing the trigger from moving to OFF position.</li></ol>	<ol style="list-style-type: none"><li>1. Check/replace O-ring/lubricate.</li><li>2. Check/replace O-ring/lubricate.</li><li>3. Clean the tool/lubricate.</li></ol>
Failure to start tool.	<ol style="list-style-type: none"><li>1. Tool dry, lacks lubrication.</li><li>2. The spring in the cylinder cap is damaged.</li><li>3. Valve sticks with cylinder cap.</li><li>4. No compressed air.</li></ol>	<ol style="list-style-type: none"><li>1. Use pneumatic tool oil.</li><li>2. Replace the spring in the cylinder cap.</li><li>3. Disassemble/check/lubricate.</li><li>4. Check air supply.</li></ol>
Blade driving fasteners too deeply.	<ol style="list-style-type: none"><li>1. Safe bracket position is not correct.</li><li>2. Air pressure is too high.</li></ol>	<ol style="list-style-type: none"><li>1. Move the safety bracket down.</li><li>2. Decrease air pressure.</li></ol>
Fasteners are jammed.	Fasteners are wrong size.	Use recommended fasteners.

# EXPLODED VIEW



# PARTS LIST

---

Item	Stock #	Description
1	61702-001	SCREW
2	61702-002	CYLINDER CAP
2a	61702-002a	EXHAUST DEFLECTOR
3	61702-003	GASKET
4	61702-004	SEAL
5	61702-005	O-RING 15.7×2
6	61702-006	SPRING
7	61702-007	O-RING 31.3×2.3
8	61702-008	VALVE
9	61702-009	O-RING 26.8×2.8
10	61702-010	STOPPED WASHER
11	61702-011	COLLAR
12	61702-012	O-RING 23.3×3
13	61702-013	PISTON ASSEMBLY
14	61702-014	O-RING 35.3×2.5
15	61702-015	CYLINDER
16	61702-016	BUMPER
17	61702-017	SEAL
18	61702-018	BODY
19	61702-019	SEAL
20	61702-020	TRIGGER VALVE HEAD
21	61702-021	O-RING 15X1.9
22	61702-022	TRIGGER VALVE GUIDER
23	61702-023	O-RING 6.5X1.4
24	61702-024	TRIGGER VALVE STEM
25	61702-025	SAFE BRAKECT
26	61702-026	SPRING
27	61702-027	LOCK WASHER
28	61702-028	TRIGGER
29	61702-029	PIN

Item	Stock #	Description
30	61702-030	SCREW
31	61702-031	PLATE
32	61702-032	SCREW
33	61702-033	DRIVE GUIDE
34	61702-034	SPRING PIN 2X10
35	61702-035	FIXED MAGAZINE UNIT
36	61702-036	SCREW
37	61702-037	STOPPED PIECE
38	61702-038	SCREW
39	61702-039	MOVABLE MAGAZINE UNIT
40	61702-040	SPRING PIN 2.5X9
41	61702-041	SCREW
42	61702-042	SAFE COVER
43	61702-043	SPRING
44	61702-044	FEEDER SHOE
45	61702-045	PULLEY
46	61702-046	SPRING WASHER
47	61702-047	NUT
48	61702-048	SCREW
49	61702-049	SUPPORT
50	61702-050	NUT
51	61702-051	PIN
52	61702-052	TORSION SPRING
53	61702-053	MAGAZINE LOCK
54	61702-054	SOFT GRIP SLEEVE
55	61702-055	O-RING 40.2×2.3
56	61702-056	END CAP
57	61702-057	AIR PLUG

## LIMITED ONE YEAR WARRANTY

---

WEN Products is committed to building tools that are dependable for years. Our warranties are consistent with this commitment and our dedication to quality.

### LIMITED WARRANTY OF WEN CONSUMER POWER TOOLS PRODUCTS FOR HOME USE

GREAT LAKES TECHNOLOGIES, LLC (“Seller”) warrants to the original purchaser only, that all WEN consumer power tools will be free from defects in material or workmanship for a period of one (1) year from date of purchase. Ninety days for all WEN products, if the tool is used for professional use.

**SELLER’S SOLE OBLIGATION AND YOUR EXCLUSIVE REMEDY** under this Limited Warranty and, to the extent permitted by law, any warranty or condition implied by law, shall be the repair or replacement of parts, without charge, which are defective in material or workmanship and which have not been misused, carelessly handled, or misrepaired by persons other than Seller or Authorized Service Center. To make a claim under this Limited Warranty, you must make sure to keep a copy of your proof of purchase that clearly defines the Date of Purchase (month and year) and the Place of Purchase. Place of purchase must be a direct vendor of Great Lakes Technologies, LLC. Third party vendors such as garage sales, pawn shops, resale shops, or any other secondhand merchant void the warranty included with this product. Contact [techsupport@wenproducts.com](mailto:techsupport@wenproducts.com) or 1-800-232-1195 to make arrangements for repairs and transportation.

When returning a product for warranty service, the shipping charges must be prepaid by the purchaser. The product must be shipped in its original container (or an equivalent), properly packed to withstand the hazards of shipment. The product must be fully insured with a copy of the warranty card and/or the proof of purchase enclosed. There must also be a description of the problem in order to help our repairs department diagnose and fix the issue. Repairs will be made and the product will be returned and shipped back to the purchaser at no charge.

**THIS LIMITED WARRANTY DOES NOT APPLY TO ACCESSORY ITEMS THAT WEAR OUT FROM REGULAR USAGE OVER TIME INCLUDING BELTS, BRUSHES, BLADES, ETC.**

**ANY IMPLIED WARRANTIES SHALL BE LIMITED IN DURATION TO ONE (1) YEAR FROM DATE OF PURCHASE. SOME STATES IN THE U.S., SOME CANADIAN PROVINCES DO NOT ALLOW LIMITATIONS ON HOW LONG AN IMPLIED WARRANTY LASTS, SO THE ABOVE LIMITATION MAY NOT APPLY TO YOU.**

**IN NO EVENT SHALL SELLER BE LIABLE FOR ANY INCIDENTAL OR CONSEQUENTIAL DAMAGES (INCLUDING BUT NOT LIMITED TO LIABILITY FOR LOSS OF PROFITS) ARISING FROM THE SALE OR USE OF THIS PRODUCT. SOME STATES IN THE U.S. AND SOME CANADIAN PROVINCES DO NOT ALLOW THE EXCLUSION OR LIMITATION OF INCIDENTAL OR CONSEQUENTIAL DAMAGES, SO THE ABOVE LIMITATION OR EXCLUSION MAY NOT APPLY TO YOU.**

**THIS LIMITED WARRANTY GIVES YOU SPECIFIC LEGAL RIGHTS, AND YOU MAY ALSO HAVE OTHER RIGHTS WHICH VARY FROM STATE TO STATE IN THE U.S., PROVINCE TO PROVINCE IN CANADA AND FROM COUNTRY TO COUNTRY.**

**THIS LIMITED WARRANTY APPLIES ONLY TO PORTABLE ELECTRIC TOOLS, BENCH POWER TOOLS, OUTDOOR POWER EQUIPMENT AND PNEUMATIC TOOLS SOLD WITHIN THE UNITED STATES OF AMERICA, CANADA AND THE COMMONWEALTH OF PUERTO RICO. FOR WARRANTY COVERAGE WITHIN OTHER COUNTRIES, CONTACT THE WEN CUSTOMER SUPPORT LINE.**