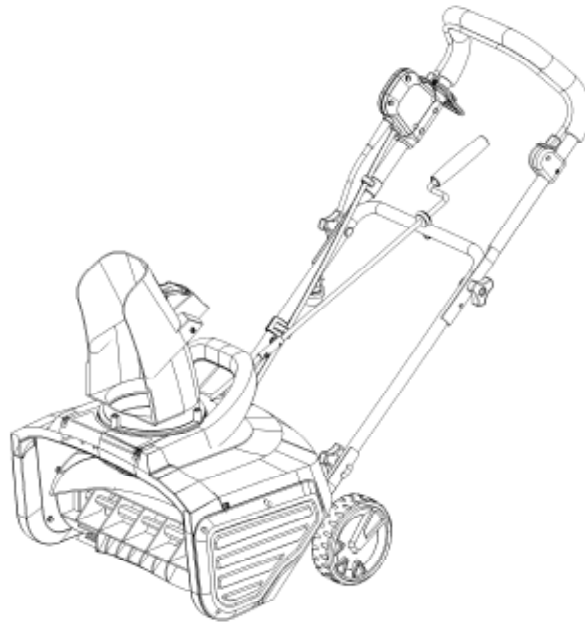




SNOW BLASTER



Intertek
4008438

Model # 5662
bit.ly/wenvideo

IMPORTANT:

Your new tool has been engineered and manufactured to WEN's highest standards for dependability, ease of operation, and operator safety. When properly cared for, this product will supply you years of rugged, trouble-free performance. Pay close attention to the rules for safe operation, warnings, and cautions. If you use your tool properly and for intended purpose, you will enjoy years of safe, reliable service.

NEED HELP? CONTACT US!

Have product questions? Need technical support?
Please feel free to contact us at:



800-232-1195 (M-F 8AM-5PM CST)



techsupport@wenproducts.com



WENPRODUCTS.COM

NOTICE: Please refer to wenproducts.com for the most up-to-date instruction manual.

TABLE OF CONTENTS

Technical Data	2
General Safety Rules	3
Electrical Information	5
Know Your Snow Thrower.....	6
Assembly and Adjustments.....	7
Operation	8
Exploded View and Parts List	10
Maintenance	12
Warranty	13

TECHNICAL DATA

Model Number:	5662
Motor:	120 V, 60 Hz, 13.5A
Clearing Width:	18 inches
Clearing Height:	7.8 inches
Max Throwing Distance	20 feet
Max Throwing Height:	10 feet
Wheel Size:	6 inches
Product Dimensions:	44 x 19.5 x 38 inches
Weight:	28 pounds

GENERAL SAFETY RULES

Safety is a combination of common sense, staying alert and knowing how your tool works. **SAVE THESE SAFETY INSTRUCTIONS.**



WARNING: To avoid mistakes and serious injury, do not plug in your tool until the following steps have been read and understood.

READ and become familiar with this entire instruction manual. **LEARN** the tool's applications, limitations, and possible hazards.

STAY ALERT. Watch what you are doing and use common sense when operating your snow thrower.

DO NOT USE the snow thrower while you are tired or under the influence of drugs, alcohol, or medication. A moment of inattention during operation may result in serious bodily injury.

NEVER LEAVE YOUR RUNNING SNOW THROWER UNATTENDED. Do not leave your Snow Thrower until it has come to a complete stop. Unplug the unit before leaving for extended periods of time.

REMOVE any adjusting keys or wrenches before turning the snow thrower on. A wrench or a key that's left attached to a rotating part of the snow thrower may result in a hex bolt to the clavicle or some other type of bodily injury.

DO NOT OVERREACH. Keep proper footing and balance at all times. This enables better control of the unit in unexpected situations and will also prevent you from falling down and embarrassing yourself in front of your cool neighbor Greg. Hold the handles firmly to avoid injury. When stepping backwards, be cautious about any obstacles beneath your feet or behind you in order to avoid falling.

KNOW YOUR SNOW THROWER. Familiarize yourself with the main parts of your snow thrower.



READ the operator's manual carefully. Learn your snow thrower's applications and limitations as well as the specific potential hazards related to this machine. Do not use this machine for any purpose other than the one for which it was designed. Otherwise, you may cause mechanical defects, serious damage or personal injury.

PRELIMINARY UNIT INSPECTION: thoroughly inspect the unit before operation. Make sure all the parts are secured and installed correctly. If you notice any abnormalities, do not use the machine until it has been properly repaired. Always perform a test run the first time you use the snow thrower or after replacing parts to ensure that the unit is functioning properly.

PRELIMINARY AREA INSPECTION: check and clear the plowing area before each use. Remove all foreign objects such as rocks, broken glass, nails, wire, or string, which can be thrown by or become entangled in the snow thrower. Keep the area of operation clear of other people and pets.

EXCESSIVE FORCE: the snow thrower was designed to respond at a certain rate for various snow conditions to optimize safety and performance. Do not force it to do a job that it cannot handle and always keep pressure constant.

MALFUNCTIONING SWITCH: do not use the snow thrower if the switch does not turn it on and off. Any electrical appliance that cannot be controlled by the switch is not safe to use and must be repaired.

GENERAL SAFETY RULES

HITTING AN OBJECT: if the snow thrower accidentally strikes an object, stop the snow thrower; inspect for damage; repair or replace any damaged parts before restarting and operating the snow thrower.

DISCHARGE CHUTE SAFETY: never direct the snow discharge chute at the operator, at bystanders, at vehicles, at your neighbor Greg, or at windows. Thrown snow and foreign objects accidentally picked up by the snow thrower can cause serious damage and personal injury. Do not use your hands to unclog the discharge chute. Stop the motor and unplug the unit before removing debris. Keep children away during operation.

ABNORMAL OPERATION: if you notice the snow thrower running in an unstable state or if you hear abnormal sounds from the motor, stop the machine, disconnect the power immediately, and contact our customer service department.

NOISE CONTROL: when using the snow thrower, you must respect local laws and regulations regarding noise control and environmental protection. To avoid noise disturbance, you should carefully decide upon an appropriate operation time and consider the surrounding conditions.

AVOID ACCIDENTAL STARTUPS: disconnect the snow thrower from the power source when the machine is not in use, when changing accessories, or before performing any maintenance. Do not carry a plugged-in snow thrower with a finger on the switch.

STORE SAFELY: store the snow thrower indoors in a dry area between uses. Keep the machine in a locked area, where children and unauthorized users cannot gain access. Do not store the machine while it is still connected to a power source. This may cause damage and injury.

MAINTAIN FOR SAFETY AND LONGEVITY: check for misalignment or binding of moving parts, breakage of parts, and any other conditions that may affect the unit's operation. If damaged, repair or replace the damaged part before operating. Only use replacement parts made for your model. When replacing any parts, you must strictly observe the instructions and procedures described in this manual. Call customer service (1-800-232-1195, M to F, 8 to 5 CST) for anything that you find unclear about maintenance. Special care should be paid to any rubber parts, since these parts may increase the engine load and decrease its mechanical power if damaged.

ONLY USE RECOMMENDED ACCESSORIES: any accessory that does not specify compatibility with the WEN 5662 Snow Thrower creates a risk of injury.

DRESS PROPERLY: do not wear loose clothing or jewelry as they can be caught in the moving parts. Wear rubber boots when operating the snow thrower.

TO PREVENT ELECTRIC SHOCK: only use with an extension cord suitable for outdoor use. To prevent the disconnection of snow thrower cords, use the included extension cord wrangling loop included on the handle of the snow thrower. If the cord is damaged in any manner while plugged in, pull the extension cord from the wall receptacle immediately. Don't abuse the cord. Never carry the snow thrower by its cord and do not yank it to disconnect from a receptacle. Keep the cord away from heat, oil and sharp edges.

ALWAYS STORE INDOORS: when not in use, store the unit indoors in a dry, locked place away from children.

IMPORANT: DO NOT PULL THE UNIT BACKWARDS THROUGH THE SNOW. Snow will go into the air vents found on the back of the machine and damage the unit.

ELECTRICAL INFORMATION

DOUBLE-INSULATED TOOLS

The tool's electrical system is double insulated where two systems of insulation are provided. This eliminates the need for the usual three-wire grounded power cord. Double insulated tools do not need to be grounded, nor should a means for grounding be added to the product. All exposed metal parts are isolated from the internal metal motor components with protecting insulation.



DO NOT MODIFY THE PLUG PROVIDED. If it will not fit the outlet, have the proper outlet installed by a licensed electrician.

IMPROPER CONNECTION of the equipment grounding conductor can result in electric shock. The conductor with the green insulation (with or without yellow stripes) is the equipment grounding conductor. If repair or replacement of the electric cord or plug is necessary, **DO NOT** connect the equipment grounding conductor to a live terminal.

CHECK with a licensed electrician or service personnel if you do not completely understand the grounding instructions or whether the tool is properly grounded.

CAUTION: In all cases, make certain the outlet in question is properly grounded. If you are not sure, have a licensed electrician check the outlet.



WARNING: Do not expose to rain or use in damp locations. Only use with an extension cord suitable for outdoors.

Make sure your extension cord is in good condition. When using an extension cord, be sure to use one heavy enough to carry the current your product will draw. An undersized cord will cause a drop in line voltage resulting in loss of power and overheating. The table below shows the correct size to be used according to cord length and nameplate ampere rating. When in doubt, use a heavier cord. The smaller the gauge number, the heavier the cord.

AMPERAGE	UL RECOMMENDATIONS FOR EXTENSION CORDS			
	25 ft.	50 ft.	100 ft.	150 ft.
13.5 A	14 gauge	12 gauge	Not Recommended by UL	

Make sure your extension cord is properly wired and in good condition. Always replace a damaged extension cord or have it repaired by a qualified person before using it.

Protect your extension cords from sharp objects, excessive heat and damp/wet areas.

Use a separate electrical circuit for your tools. This circuit must not be less than a #12 wire and should be protected with a 15 A time-delayed fuse. Before connecting the motor to the power line, make sure the switch is in the OFF position and the electric current is rated the same as the current stamped on the motor nameplate. Running at a lower voltage will damage the motor.

KNOW YOUR SNOW THROWER

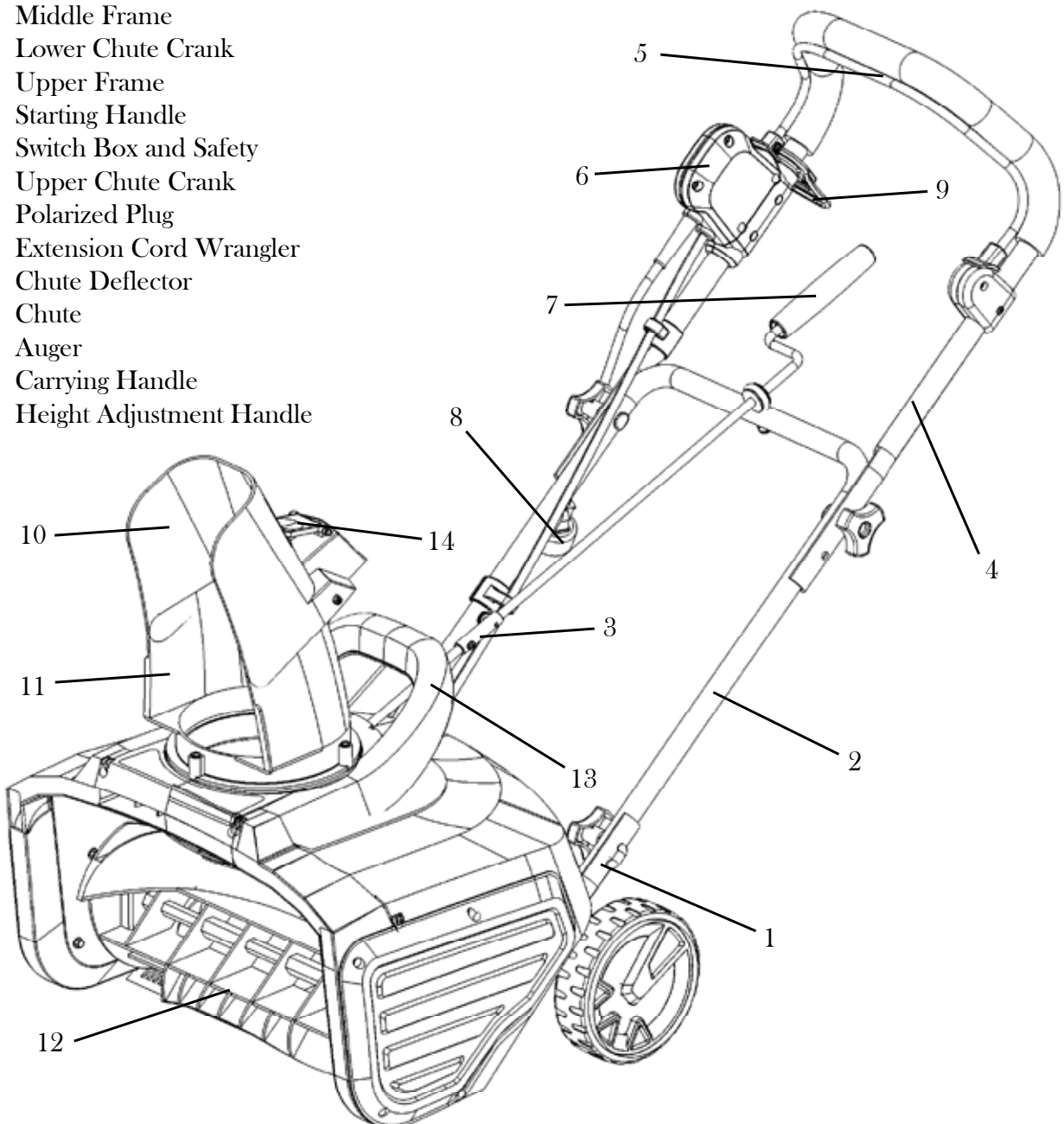
UNPACKING

Carefully remove your WEN Snow Blaster and all other items from the box. Aside from the Snow Blaster itself, your purchase also comes with the following pieces of hardware:

- One chute
- Four knobs
- One cable clip
- Four screws
- Two T-Bolts
- Two U-Bolts
- One upper crank handle.

RECOMMENDED TOOLS - use a Phillips head screwdriver to mount the chute to the body of the unit.

- 1 Lower Frame
- 2 Middle Frame
- 3 Lower Chute Crank
- 4 Upper Frame
- 5 Starting Handle
- 6 Switch Box and Safety
- 7 Upper Chute Crank
- 8 Polarized Plug
- 9 Extension Cord Wrangler
- 10 Chute Deflector
- 11 Chute
- 12 Auger
- 13 Carrying Handle
- 14 Height Adjustment Handle



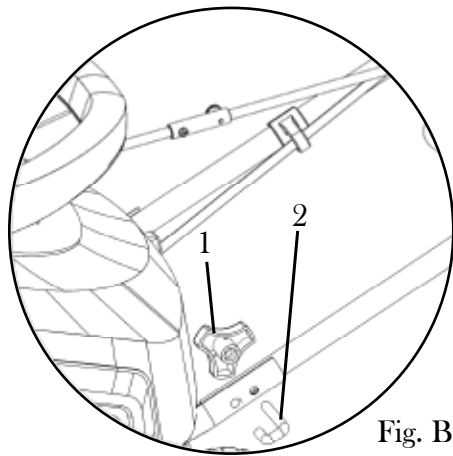
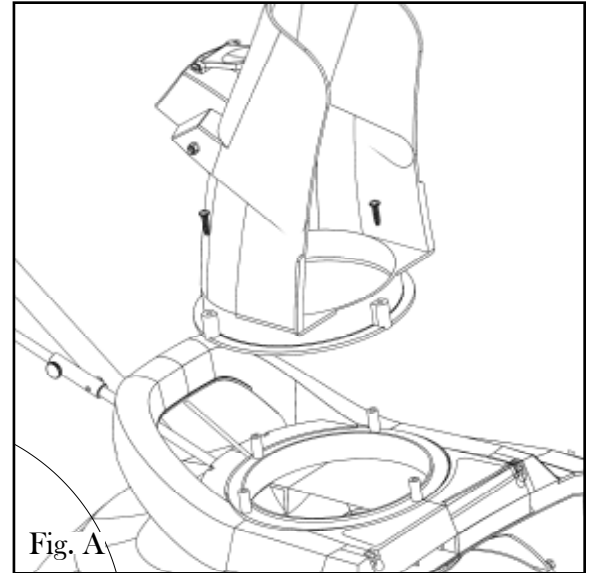
ASSEMBLY AND ADJUSTMENTS

WARNING: Always be sure that the tool is switched off and unplugged before adjusting, adding accessories, or checking a function on the tool.

CHUTE ASSEMBLY (Fig. A)

1. Line the chute up with the screw holes mounted around the edge of the hole in top of the snow thrower's body. Make sure that the chute is facing forward, away from the lower frame assembly.

2. Using the included screws, tighten the chute onto the body of the snow thrower with a Phillips head screwdriver.



MIDDLE FRAME ASSEMBLY (Fig. B)

NOTE: The hole and grommet of the eye bolt on the middle assembly should be facing UPWARDS (as shown in Fig. C - 3).

1. Hold the middle frame so that the screw holes line up with the holes on the lower frame.

2. Insert a U-bolt (Fig. B - 2) through the bottom two screw holes. Secure in place with a knob (Fig. B - 1).

3. Repeat with the other side of the snow thrower.

UPPER FRAME ASSEMBLY

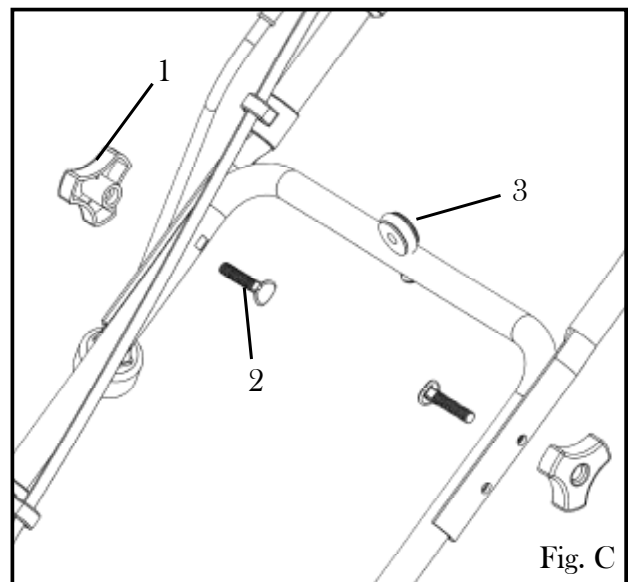
NOTE: The handle bar and the switch box should be facing UPWARDS.

1. Hold the upper frame in place so that the screw holes align with the holes on the middle frame.

2. Insert a T-Bolt (Fig. C - 2) into each hole with the head on the inside of the handle. Attach a knob to the outside and tighten (Fig. C - 1)

3. Repeat this step on the other side of the handle.

4. Secure the cable in place along the side of the frame using the cable clip. Attach the cable clip onto the middle frame assembly by snapping it onto the metal frame.



ASSEMBLY AND ADJUSTMENTS

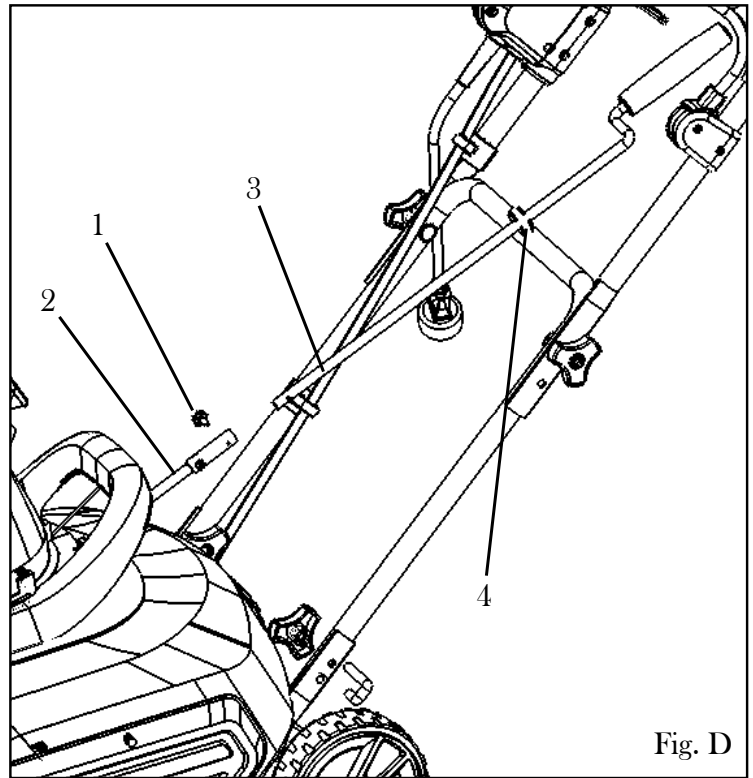
CHUTE CRANK ASSEMBLY

1. Locate the upper chute crank in the parts bag. Loosen the thumb screw (Fig. D - 1) located on the lower chute crank (Fig. D - 2) that comes pre-attached to the body of the snow thrower.

2. Slide the upper chute crank (Fig. D - 3) through the grommet (Fig. D - 4) in the middle frame assembly into the lower chute crank, lining up the holes in each respective part of the crank to allow room for the thumb screw.

3. Screw the lower crank's thumb screw in through both the lower and upper chute crank. Test the crank, turning it clockwise to make the chute turn left and counterclockwise to turn right.

NOTE: If things aren't lining up as they should, check to make sure that your middle frame assembly is on correctly. As mentioned earlier, the grommet and thread of the middle assembly should be facing upwards, but I bet you didn't even read that part of the instructions did you. I work so hard on these manuals and to what avail...



OPERATION



SECURING THE EXTENSION CORD (Fig. E)

For safe and efficient use of your snow thrower, only use a UL-rated extension cord that meets the gauge needs to operate a 13.5A snow thrower.

To prevent the extension cord from disconnecting during operation, fold the female end of the extension cord in half and slide it through the plastic extension cord wrangler found hanging from the upper frame assembly. Place the folded half of the cord around the wrangler's hook and pull down to secure it in place. This should help prevent the cords from becoming unplugged.

Note that the snow thrower has a polarized male plug with one prong slightly longer and wider than the other. The female end of the extension cord should be similarly polarized so the cord fits snugly into the switch-housing socket.

TURNING THE SNOW THROWER ON AND OFF

To power the snow thrower on, first plug it into the proper power source. To start the rotation of the auger, press and hold the safety switch found on the outside of switch housing on the upper frame assembly.

While pressing down on the safety button, pull the handle bar towards you and grab hold of it firmly to start the machine. When the motor is on, release the switch button and hold the handle bar with two hands.

To power the snow thrower off, release your grip on the handle bar.

OPERATION

IMPORANT: DO NOT PULL THE UNIT BACKWARDS THROUGH THE SNOW. Snow will go into the air vents found on the back of the machine and damage the unit.

PLOWING THE SNOW

WARNING: Keep the area of operation free of foreign objects that can become thrown by the auger blades. Perform a thorough inspection of the area before plowing since some objects may be hidden from view by surrounding snow. If the snow thrower hits an obstruction or picks up a foreign object during use, stop the snow thrower immediately. Disconnect the extension cord, remove the obstruction, and inspect the unit for damage. Repair or replace any damaged parts before restarting and operating the unit.

Keep children, pets, and bystanders away from the area of operation. Be aware that the normal noise a running snow thrower produces may make it difficult for you to hear approaching people.

Start your clearing path near the electrical outlet and work outward. To clear in the opposite direction, step over the cord and pivot the Snow Thrower on its wheels. Make sure to overlap clearing paths.

Also keep in mind the wind direction. If possible, move in the same direction as the wind so that the snow is not thrown against the wind, back into your face or onto the recently cleared path.

While moving the snow thrower, only move within a range the cable can reach.

DO NOT USE YOUR HANDS TO UNCLOG CHUTE. Stop the motor and unplug the unit before removing debris. Do not walk in front of a running snow thrower. Do not direct the discharged snow towards bystanders. Do not push the snow thrower with excessive force. Push the snow thrower gently and evenly in accordance with the unit's throw rate.

Only use your Snow Thrower with the intention of moving snow. Other materials may hurt the machine and endanger users and bystanders.

Some parts of the snow thrower may freeze under extreme temperature conditions. Do not attempt to operate the unit with frozen parts. If the parts freeze while the snow thrower is in use, stop the snow thrower, unplug the extension cord, and inspect it for frozen parts. Make sure all parts have thawed out before attempting to operate the unit again. Never force parts or controls that have frozen and never use an open flame of any sort to thaw frozen parts.

CHANGING THE DIRECTION OF THE SNOW CHUTE

Never direct the snow discharge chute at the operator, bystanders, vehicles or nearby windows. The discharged snow along with possible foreign objects can cause serious injury and bodily damage if picked up and thrown at a person or animal. Always point the discharge chute in the opposite direction of anything you don't want to hit with snow and foreign objects.

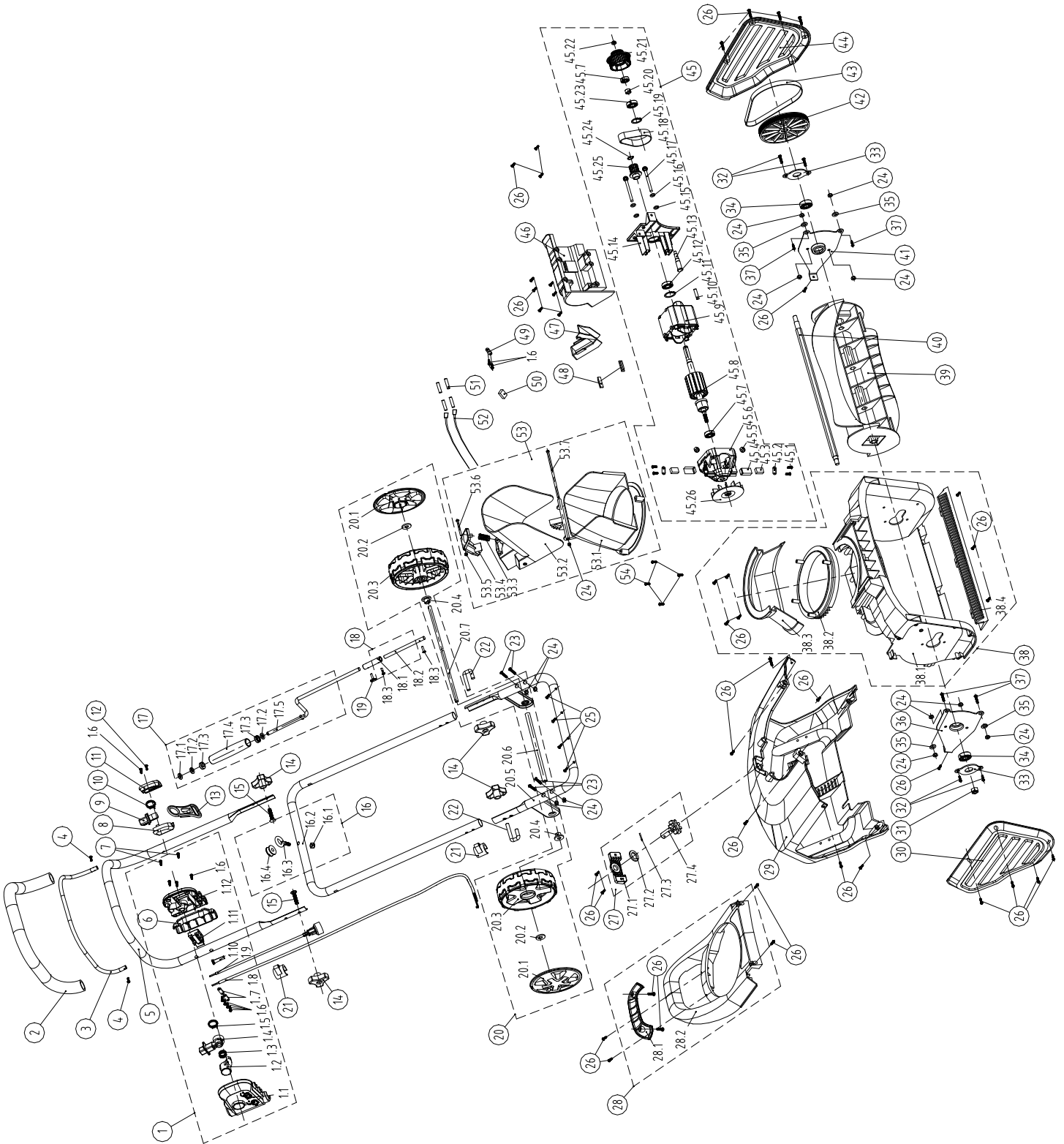
The discharge chute can be adjusted a full 180° degrees by rotating the chute crank. Rotate the chute control crank clockwise to move the discharge chute to the left and counter clockwise to move it to the right.

The chute deflector on top of the snow chute can be adjusted by squeezing on the height adjustment handle. This allows users to adjust the angle of the snow stream. Make sure the chute deflector is locked into a position before operation.

EXPLODED VIEW AND PARTS LIST

No.	Part No.	Description	Qty.	No.	Part No.	Description	Qty.
1	5662B-001	Switch Subassembly	1	28.2	5662B-057	Handle	1
1.1	5662B-002	Switch Cover (Right)	1	29	5662B-058	Upper Housing	1
1.2	5662B-003	Button	1	30	5662B-059	Right Housing Cover	1
1.3	5662B-004	Switch Spring	1	31	5662B-060	Lock Nut	1
1.4	5662B-005	Switch Bracket	1	32	5662B-061	Counter Sunk Screw	4
1.5	5662B-006	Torsion Spring	1	33	5662B-062	Washer	2
1.6	5662B-007	Pan Head Screws	11	34	5662B-063	Ball Bearing	2
1.7	5662B-008	Power Cable	1	35	5662B-064	Washer	4
1.8	5662B-009	Power Cable Plug	1	36	5662B-065	Right Housing Bracket	1
1.9	5662B-010	Cable Sleeve	1	37	5662B-066	Bolt	4
1.10	5662B-011	Switch	1	38	5662B-067	Main Housing Assembly	1
1.11	5662B-100	Switch Relay	1	38.1	5662B-068	Main Housing	1
1.12	5662B-012	Switch Cover (Left)		38.2	5662B-069	Ring Gear	1
2	5662B-013	Padded Grip	1	38.3	5662B-070	Chute Mouth	1
3	5662B-014	Trigger Handle	1	38.4	5662B-071	Scraper	1
4	5662B-015	Screw	2	39	5662B-072	Auger	1
5	5662B-016	Handle	1	40	5662B-073	Auger Shaft	1
6	5662B-017	Switch Mount	1	41	5662B-074	Left Iron Bracket	1
7	5662B-018	Screws	2	42	5662B-076	Driven Wheel	1
8	5662B-019	Trigger Mount Right Side	1	43	5662B-077	Belt	1
9	5662B-020	Trigger Bracket	1	44	5662B-078	Left Housing Cover	1
10	5662B-021	Torsion Spring	1	45	5662B-079	Motor Assembly	1
11	5662B-022	Trigger Mount Left Side	1	45.1		Flanged Screw	4
12	5662B-023	Pan Head Screws	1	45.2		Brush Clamp	2
13	5662B-024	Power Cord Hanger	1	45.3		Carbon Brush	2
14	5662B-025	Threaded Knob	4	45.4		Brush Mount	2
15	5662B-026	Square Necked Bolt	2	45.5		Hex Nut	2
16	5662B-027	Connecting Arm Sub Assembly	1	45.6		Rear Motor Support	1
16.1	5662B-028	Lock Nut	1	45.7		Ball Bearing	2
16.2	5662B-029	Connecting Arm	1	45.8		Rotor Assembly	1
16.3	5662B-030	Eye Hook	1	45.9		Stator	1
16.4	5662B-031	Rubber Washer	1	45.10		Heat Shrink Tube	1
17	5662B-032	Chute Adjustment Handle Assembly	1	45.11		Ring	1
17.1		Clips	1	45.12		Bearing 6000RS	1
17.2		Washer	2	45.13		Sleeve	1
17.3		Handle Cap	2	45.14		Front Motor Bracket	1
17.4		Handle	1	45.15		Spring Washer	2
17.5	Upper Chute Crank	1	45.16	Gasket		2	
18	5662B-033	Lower Chute Crank	1	45.17		Stator Screw	2
18.1		Connecting Linkage	1	45.18		Synchronous Belt	1
18.2		Lower Chute Link	1	45.19		Ring	1
18.3		Pan Head Screw	2	45.20	Spacer	1	
19	5662B-034	Fixed Bolt	1	45.21	Pulley	1	
20	5662B-035	Wheel And Axle Assembly	1	45.22	Nylon Locknut	1	
20.1	5662B-036	Hub Cap	2	45.23	Bearing	1	
20.2	5662B-037	Washer	2	45.24	Clip	1	
20.3	5662B-038	Washer	2	45.25	Drive Wheel	1	
20.4	5662B-039	Wheel	2	45.26	Fan	1	
20.5	5662B-040	Nylon Sleeve	2	46	5662B-080	Motor Cover	1
20.6	5662B-041	Axle Bracket	1	47	5662B-081	Air Vent	1
20.7	5662B-042	Axle & Sleeve	1	48	5662B-082	Rubber Insert	2
21	5662B-044	Power Line Clip	2	49	5662B-083	Power Cable Clamp	3
22	5662B-045	U Bolt	2	50	5662B-084	Over Current Protection Device	1
23	5662B-046	Hex Bolt	4	51	5662B-085	Heat Shrink Tube	2
24	5662B-047	Lock Nut	13	52	5662B-086	Wire	2
25	5662B-048	Pan Head Screws	4	53	5662B-087	Snow Chute Assembly	1
26	5662B-049	Pan Head Screws	41	53.1		Lower Chute	1
27	5662B-050	Plastic Gear Sub Assembly	1	53.2		Upper Chute	1
27.1	5662B-051	Gear Seat	1	53.3		Pressure Spring	1
27.2	5662B-052	Washer	1	53.4		Chute Adjustment Lock	1
27.3	5662B-053	Elastic Pin	1	53.5		Locking Nut	1
27.4	5662B-054	Plastic Gear	1	53.6		Screw	1
28	5662B-055	Chute Handle SubAssembly	1	53.7	Screw	1	
28.1	5662B-056	Handle Cover	1	54	5662B-088	Screw	4

EXPLODED VIEW AND PARTS LIST



MAINTENANCE

WARNING: Make sure to turn off the switch and disconnect the extension cord before performing any maintenance tasks on your snow thrower.

1. **KNOW YOUR LIMITATIONS.** Do not overload your snow thrower's capacity by attempting to clear snow at too fast of a rate.
2. Use of the snow thrower for operations outside of its intended usages could result in a dangerous situation.
3. Do not attempt to repair the snow thrower unless you have the proper tools and knowledge for disassembly and repair. Our recommendation for repairs would usually be to take the unit to a qualified service technician.
4. Check the bolts at frequent intervals for proper tightness to ensure that the equipment is in safe working condition.
5. After each snow removal session, run the snow thrower for a few minutes to prevent the collector/impeller from freezing. Shut off the motor, wait for all revolving parts to stop completely, and wipe the residual ice and snow off of the unit. Rotate the chute crank several times to remove any excess snow.

LIFETIME LUBRICATION: lubrication is not necessary and may damage the unit. The snow thrower is lubricated for lifetime use at the factory before shipment.

STORAGE

1. Rid the snow thrower of snow and ice buildup before storage or transportation. Be sure to secure the unit during transportation.
2. Disconnect the extension cord from the snow thrower between uses. Inspect the extension cord closely for signs of wear or damage. Replace it as necessary. Do not store a damaged extension cord, as the next user may not examine it as closely.
3. Inspect the snow thrower carefully for worn, loose or damaged parts. Check connections and screws. Tighten as necessary.
4. Store the unit along with the disconnected extension cord in a locked, dry place away from the reach of children to prevent unauthorized use or damage. Cover loosely with a tarp for added protection.

LIMITED TWO YEARS WARRANTY

WEN Products is committed to building tools that are dependable for years. Our warranties are consistent with this commitment and our dedication to quality.

LIMITED WARRANTY OF WEN CONSUMER POWER TOOLS PRODUCTS FOR HOME USE

GREAT LAKES TECHNOLOGIES, LLC (“Seller”) warrants to the original purchaser only, that all WEN consumer power tools will be free from defects in material or workmanship for a period of two (2) years from date of purchase. Ninety days for all WEN products, if the tool is used for professional use.

SELLER’S SOLE OBLIGATION AND YOUR EXCLUSIVE REMEDY under this Limited Warranty and, to the extent permitted by law, any warranty or condition implied by law, shall be the repair or replacement of parts, without charge, which are defective in material or workmanship and which have not been misused, carelessly handled, or misrepaired by persons other than Seller or Authorized Service Center. To make a claim under this Limited Warranty, you must make sure to keep a copy of your proof of purchase that clearly defines the Date of Purchase (month and year) and the Place of Purchase. Place of purchase must be a direct vendor of Great Lakes Technologies, LLC. Third party vendors such as garage sales, pawn shops, resale shops, or any other secondhand merchant void the warranty included with this product. Contact techsupport@wenproducts.com or 1-800-232-1195 to make arrangements for repairs and transportation.

When returning a product for warranty service, the shipping charges must be prepaid by the purchaser. The product must be shipped in its original container (or an equivalent), properly packed to withstand the hazards of shipment. The product must be fully insured with a copy of the warranty card and/or the proof of purchase enclosed. There must also be a description of the problem in order to help our repairs department diagnose and fix the issue. Repairs will be made and the product will be returned and shipped back to the purchaser at no charge.

THIS LIMITED WARRANTY DOES NOT APPLY TO ACCESSORY ITEMS THAT WEAR OUT FROM REGULAR USAGE OVER TIME INCLUDING BELTS, BRUSHES, BLADES, ETC.

ANY IMPLIED WARRANTIES SHALL BE LIMITED IN DURATION TO TWO (2) YEARS FROM DATE OF PURCHASE. SOME STATES IN THE U.S., SOME CANADIAN PROVINCES DO NOT ALLOW LIMITATIONS ON HOW LONG AN IMPLIED WARRANTY LASTS, SO THE ABOVE LIMITATION MAY NOT APPLY TO YOU.

IN NO EVENT SHALL SELLER BE LIABLE FOR ANY INCIDENTAL OR CONSEQUENTIAL DAMAGES (INCLUDING BUT NOT LIMITED TO LIABILITY FOR LOSS OF PROFITS) ARISING FROM THE SALE OR USE OF THIS PRODUCT. SOME STATES IN THE U.S. AND SOME CANADIAN PROVINCES DO NOT ALLOW THE EXCLUSION OR LIMITATION OF INCIDENTAL OR CONSEQUENTIAL DAMAGES, SO THE ABOVE LIMITATION OR EXCLUSION MAY NOT APPLY TO YOU.

THIS LIMITED WARRANTY GIVES YOU SPECIFIC LEGAL RIGHTS, AND YOU MAY ALSO HAVE OTHER RIGHTS WHICH VARY FROM STATE TO STATE IN THE U.S., PROVINCE TO PROVINCE IN CANADA AND FROM COUNTRY TO COUNTRY.

THIS LIMITED WARRANTY APPLIES ONLY TO PORTABLE ELECTRIC TOOLS, BENCH POWER TOOLS, OUTDOOR POWER EQUIPMENT AND PNEUMATIC TOOLS SOLD WITHIN THE UNITED STATES OF AMERICA, CANADA AND THE COMMONWEALTH OF PUERTO RICO. FOR WARRANTY COVERAGE WITHIN OTHER COUNTRIES, CONTACT THE WEN CUSTOMER SUPPORT LINE.

**Thanks for
remembering** 