

INSTALLING A HIGH-ALTITUDE KIT ON YOUR WEN 56180, 56200i, OR 56310i GENERATOR

2018/07/27

NOTICE: WEN PRODUCTS AND GREAT LAKES TECHNOLOGIES, LLC ALWAYS RECOMMEND THAT THE HIGH-ALTITUDE KIT FOR YOUR GENERATOR BE INSTALLED BY A QUALIFIED MECHANIC. REFER TO THE OWNER'S MANUAL INCLUDED WITH YOUR GENERATOR FOR MORE INFORMATION. WEN PRODUCTS AND GREAT LAKES TECHNOLOGIES, LLC SHALL NOT BE HELD LIABLE FOR ANY GENERATOR DAMAGE OR DECREASE IN PERFORMANCE, OR INJURY TO ANY PERSON, ARISING OUT OF ANY SITUATION IN WHICH A HIGH-ALTITUDE KIT IS NOT INSTALLED BY QUALIFIED PERSONNEL. CALL 1-800-232-1195 M – F, 8 – 5 CST FOR MORE INFORMATION. FOLLOW ALL APPLICABLE SAFETY PRECAUTIONS.

WARNING: To prevent serious injury from fire, follow the kit installation procedures in a well-ventilated area away from ignition sources. If the engine is hot from use, shut the engine off and wait for it to cool before proceeding. Do not smoke near the generator. Warranty will be void if adjustments are not made for high altitude use.

Tools needed

- Ratcheting socket wrench (not included)
- 10mm socket (not included)
- 8mm socket (not included)
- Phillips head screwdriver (not included)
- Flathead screwdriver (not included)

Installing the kit

NOTE: the pictorial instructions that follow are for the WEN 56200i 2000W Inverter Generator. However, the procedure is similar for the WEN 56310i 3100W Inverter Generator and WEN 56180 1800W Generator.

1. Shut off the generator and allow it to cool to ambient temperature before proceeding. Turn off the fuel valve to stop the flow of fuel from the gas tank. Refer to the instructions in your manual.
2. Remove the oil-access panel on the side panel of your generator. Turn the screw a quarter-turn clockwise to release the latch. See Figure 1 below.



Figure 1: Oil access panel on the side of 56200i.

3. Using the Phillips head screwdriver, remove the screws holding the panel onto the frame of your generator, then remove the panel. Refer to Figure 2 below.



Figure 2: The screws to be removed from the panel.

4. Using the Phillips-head screwdriver, remove the air filter cover screw as shown in Figure 3 below, then remove the air filter cover and air filter element (see Figure 4 below).



Figure 3: Air filter cover screw.



Figure 4: Air filter element.

5. Using the sockets, remove the air filter housing mounting screws shown in Figures 5 and 6 below.

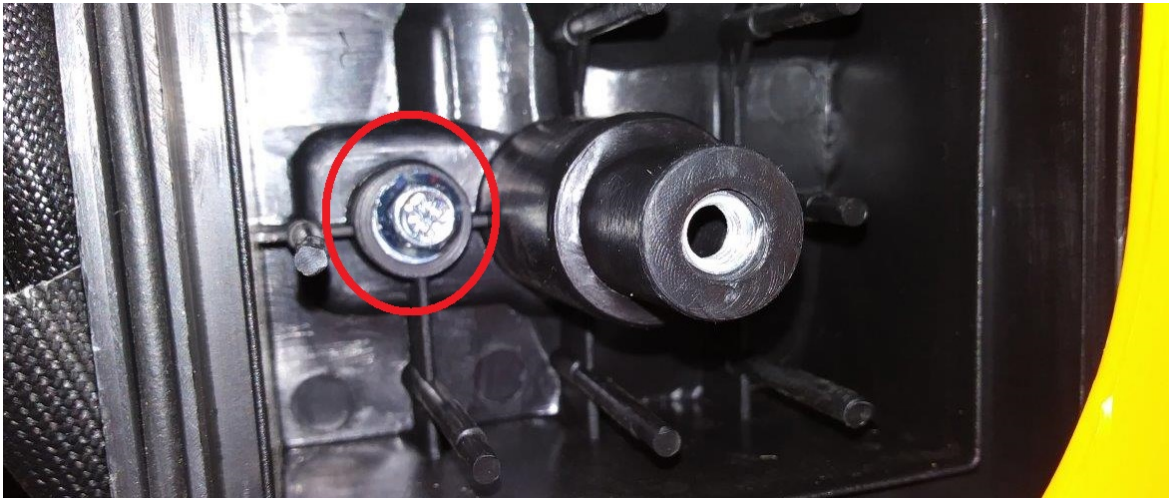


Figure 5: Remove this screw from the air filter housing.



Figure 6: Remove this screw holding the housing to the crankcase.

6. Using the 10mm socket, remove the two nuts holding the air filter housing tube onto the carburetor studs, as shown by the red arrows in Figure 7 below. Then remove the tube from the hose connection, as shown by the yellow arrow in Figure 7 below.

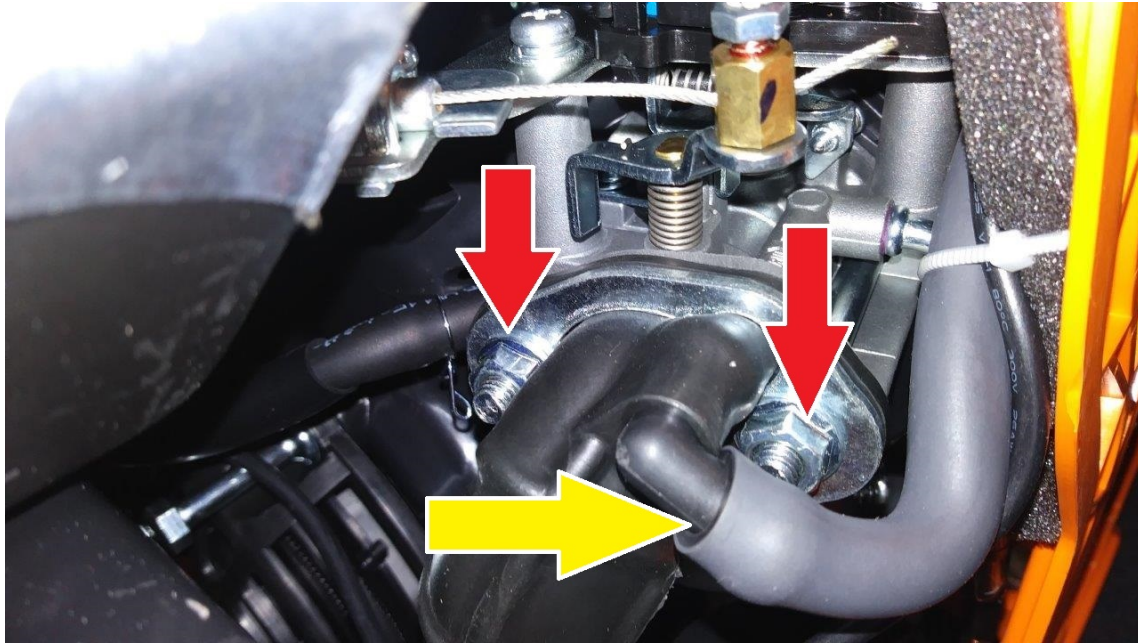


Figure 7: Remove the 2 nuts (red arrow) and hose connection (yellow).

7. The air cleaner housing can now be removed from the generator housing and out of the way, as shown in Figure 8 below.

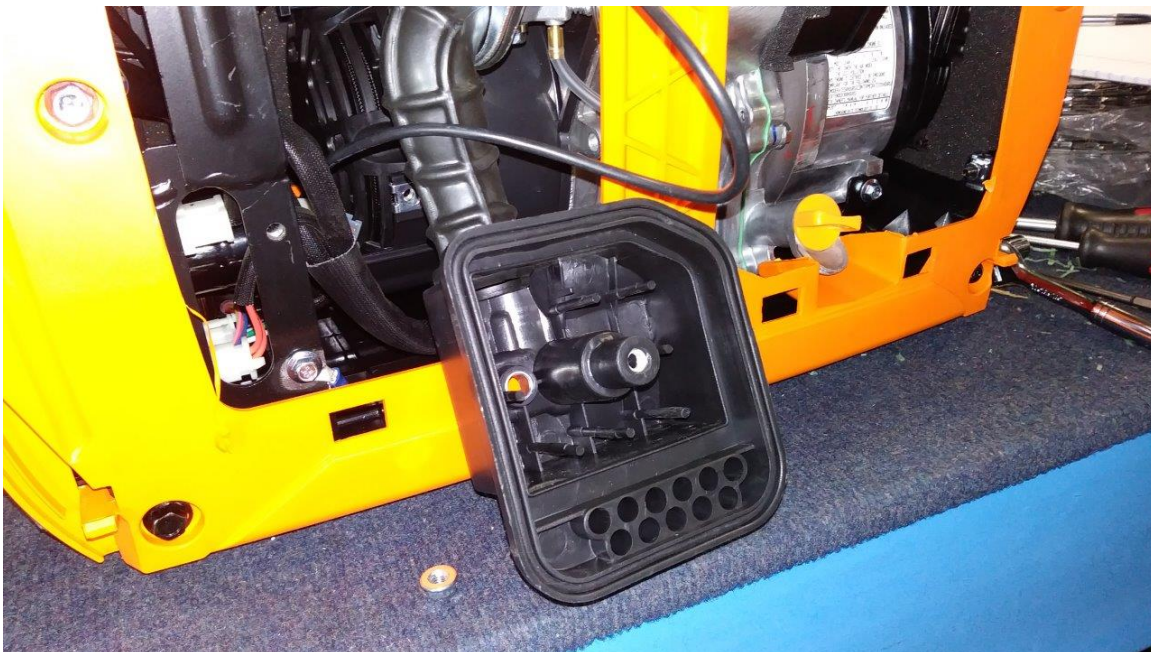


Figure 8: Pull the housing out of the generator housing and out of the way.

8. Prepare an approved gasoline-storage container. Position it underneath the carburetor drainage hose, shown by the blue arrow in Figure 9 below. Using the Phillips head screwdriver, loosen the carburetor drain screw (shown by the yellow arrow in Figure 9 below) to drain the carburetor.

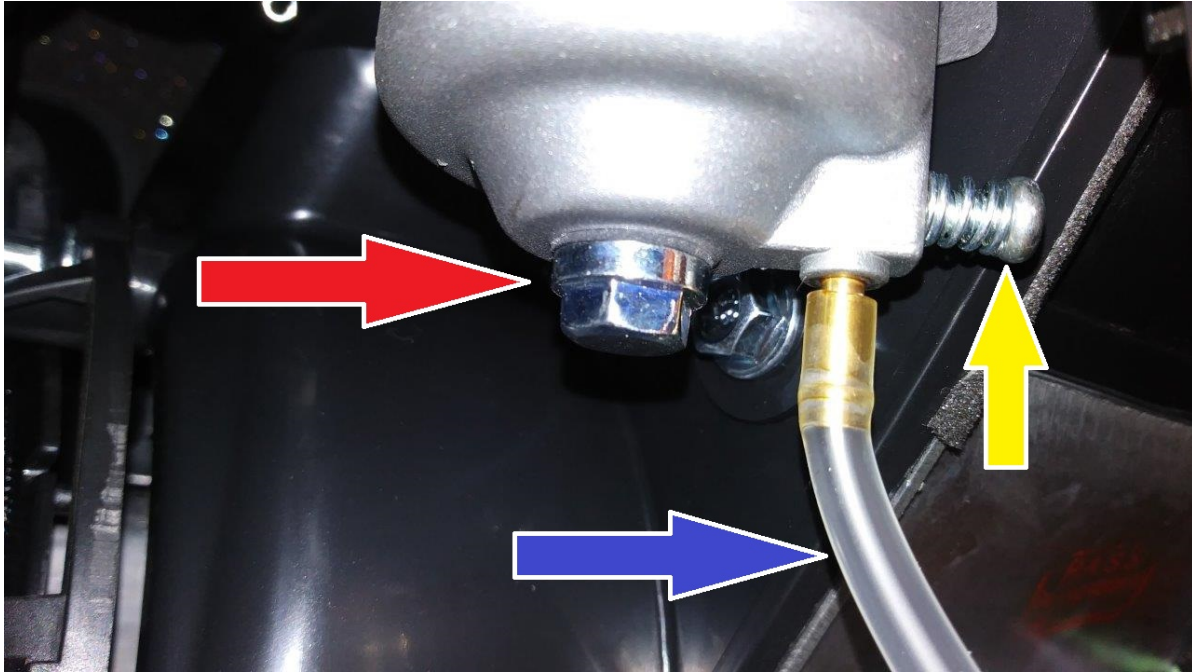


Figure 9: Carburetor bowl mounting screw (red), drainage hose (blue), drain screw (yellow).

9. Once the carburetor is fully drained, remove the carburetor bowl screw shown by the red arrow in Figure 9 above. This exposes the main jet nozzle, shown in Figure 10 below.



Figure 10: The jet nozzle is shown here, with the float pushed up.

10. Using the flat head screwdriver, remove the old jet nozzle and install the new one (refer to Fig. 11 below). Re-assemble the generator by following the steps above in reverse order.

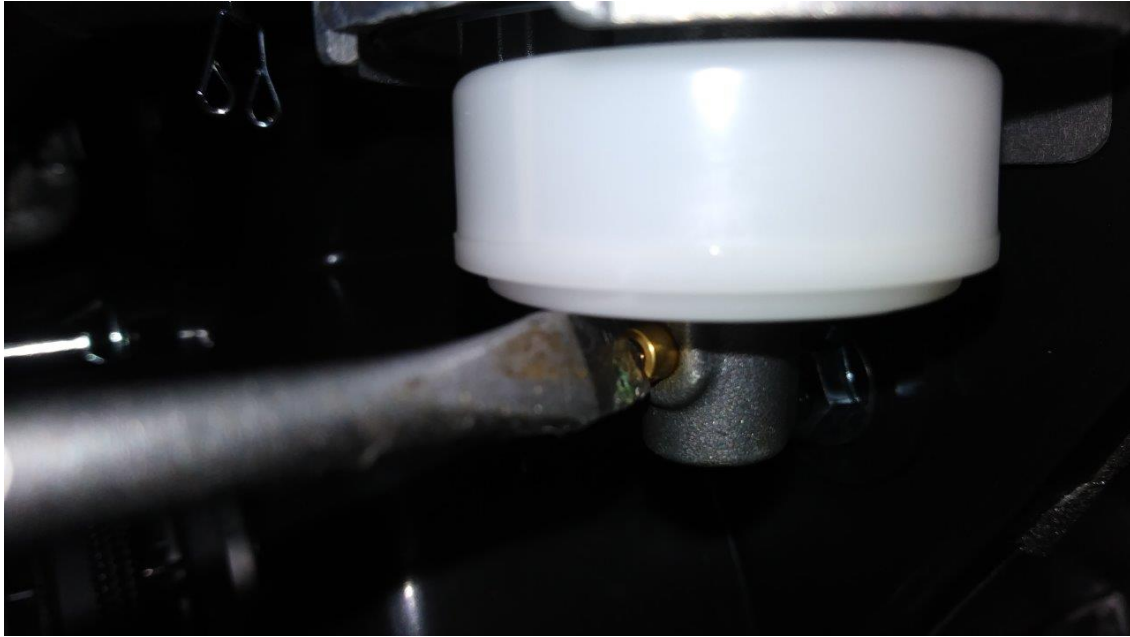


Figure 11: Use a flathead screwdriver to remove the old jet and install the new.

12. Follow the startup procedures listed in your generator manual to set up and use your generator.

NOTE: The procedure for installing a high-altitude kit for the WEN 56180 1800W Generator is very similar. Refer to the procedures above, as well as Figures 12 and 13 below.



Figure 12: The air filter housing can be removed if you so choose.

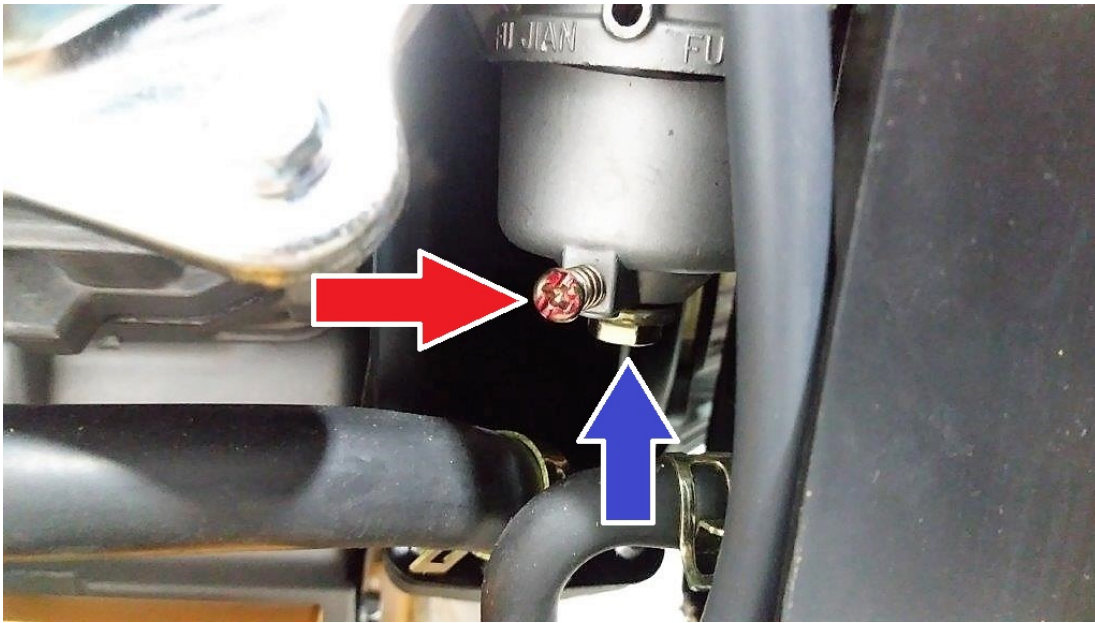


Figure 13: The carburetor is located behind the air filter housing.

Turn off the fuel valve (refer to the instructions in your manual). Using an approved gasoline-storage container, drain the carburetor (loosen the screw indicated by the red arrow in Figure 13 above). Once it is drained, the bowl can be removed (by removing the screw indicated by the blue arrow in Figure 13 above). Then replace the main jet. Refer to Figure 14 below.

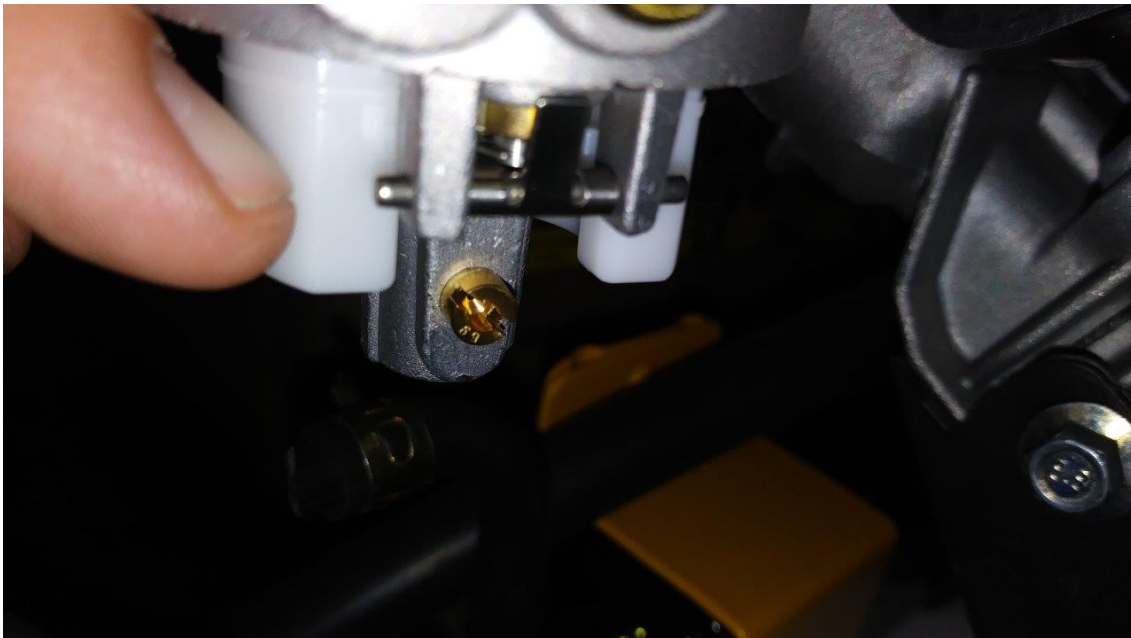


Figure 14: The main jet is on the side of the main stem.

QUESTIONS? CONCERNS?

CALL OUR CUSTOMER SERVICE HOTLINE AT 1-800-232-1195, M – F, 8 – 5
CENTRAL TIME, OR EMAIL TECHSUPPORT@WENPRODUCTS.COM.