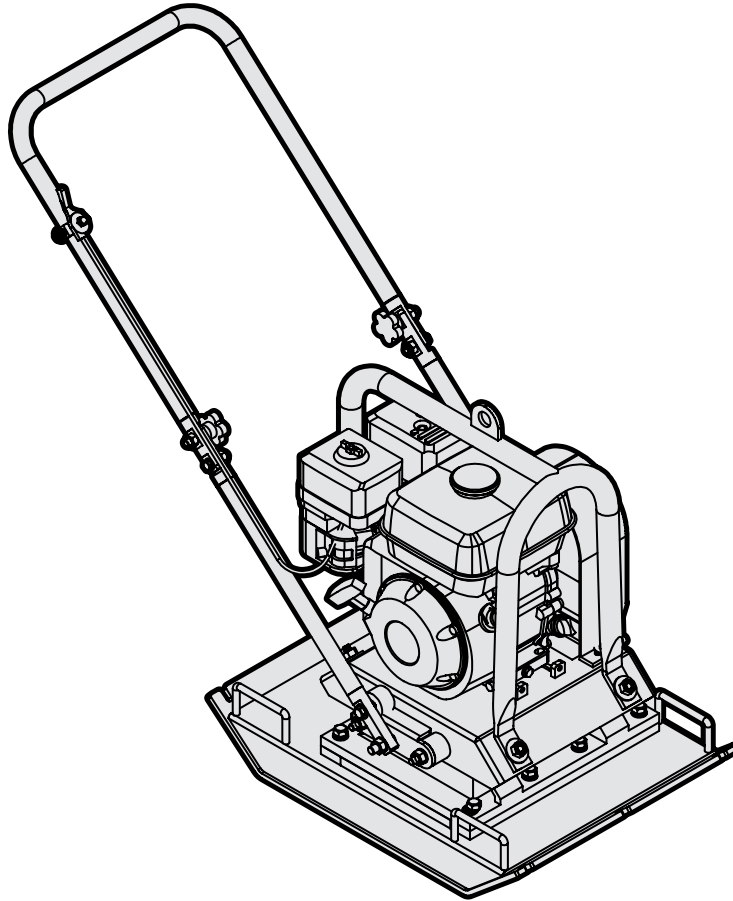




**MODEL 56035M, 56035T**

# ***PLATE COMPACTOR***

**Instruction Manual**



## ***NEED HELP? CONTACT US!***

Have product questions? Need technical support? Please feel free to contact us:



**1-847-429-9263 (M-F 8AM-5PM CST)**



**TECHSUPPORT@WENPRODUCTS.COM**

**IMPORTANT:** Your new tool has been engineered and manufactured to WEN's highest standards for dependability, ease of operation, and operator safety. When properly cared for, this product will supply you years of rugged, trouble-free performance. Pay close attention to the rules for safe operation, warnings, and cautions. If you use your tool properly and for its intended purpose, you will enjoy years of safe, reliable service.

For replacement parts and the most up-to-date instruction manuals, visit ***WENPRODUCTS.COM***

# CONTENTS


<b>WELCOME</b>	<b>3</b>
Specifications.....	3
Introduction .....	3
Service Record.....	4
<b>SAFETY</b>	<b>5</b>
General Safety Rules.....	5
Plate Compactor Safety Warnings.....	7
<b>BEFORE OPERATING</b>	<b>8</b>
Know Your Plate Compactor .....	8
Assembly & Adjustments.....	9
Plate Compactor Preparation .....	9
<b>OPERATION &amp; MAINTENANCE</b>	<b>11</b>
Operation .....	11
Maintenance.....	14
Troubleshooting Guide.....	19
Exploded View & Parts List.....	20
Warranty Statement .....	27

To purchase accessories or replacement parts for your tool, visit **WENPRODUCTS.COM**

**Compactor Pad Set** (Item No. 56035-047)  
**Magnetic Oil Dipstick** (Model 55201)  
**Vibrating Assembly Repair Kit** (Item No. 56035-G-004ASM)

# INTRODUCTION

Thanks for purchasing the WEN Plate Compactor. We know you are excited to put your tool to work, but first, please take a moment to read through the manual. Safe operation of this tool requires that you read and understand this operator's manual and all the labels affixed to the tool. This manual provides information regarding potential safety concerns, as well as helpful assembly and operating instructions for your tool.

 Indicates danger, warning, or caution. The safety symbols and the explanations with them deserve your careful attention and understanding. Always follow the safety precautions to reduce the risk of fire, electric shock or personal injury. However, please note that these instructions and warnings are not substitutes for proper accident prevention measures.

**NOTE:** The following safety information is not meant to cover all possible conditions and situations that may occur. WEN reserves the right to change this product and specifications at any time without prior notice.

At WEN, we are continuously improving our products. If you find that your tool does not exactly match this manual, please visit [wenproducts.com](http://wenproducts.com) for the most up-to-date manual or contact our customer service at **1-847-429-9263**.

**Keep this manual available to all users during the entire life of the tool and review it frequently to maximize safety for both yourself and others.**

# SPECIFICATIONS

## PLATE COMPACTOR

Model Number	56035M, 56035T
Compaction Force	4,496 lbs.
Compaction Pressure	1,498.66 lb. / ft. <sup>2</sup>
Plate Size	24 in. x 18 in.
Forward Travel	Up to 82 ft. / min.
Vibration Speed	5400 BPM
Product Dimensions	25 in. x 18.5 in. x 27.5 in.
Product Weight	207 lbs.

## ENGINE

Engine Type	4 stroke, OHV, Single Cylinder with Forced Air Cooling System
Engine Displacement	212cc
Ignition System	Non-Contact Transistor
Fuel Tank Capacity	1 Gal.
Engine Oil Capacity	20 fl. oz. (0.6 L)
Spark Plug	Torch F6TC (NGK BP6ES)
Spark Plug Gap	0.6mm - 0.8mm (0.023 in. - 0.031 in.)

# SERVICE RECORD

The serial number of your plate compactor can be found on the specifications label. Record the plate compactor information in the spaces provided below. If assistance for information or service is required, please contact customer service by calling **1-847-429-9263**, M-F 8-5 CST; you will be asked to provide the following information when calling.

**Plate Compactor Model Number:** 56035M, 56035T

**Date of Purchase:** \_\_\_\_\_

**Purchased From:** \_\_\_\_\_

**Serial Number:** \_\_\_\_\_



## SERVICE RECORD

Record the service dates of your plate compactor in the chart below. Please perform maintenance checks and operations according to the “Maintenance” section of the manual.

Service Record	Date	Date	Date	Date	Date	Date
Change Oil						
Change Spark Plug						
Clean Fuel Tank						
Clean Air Cleaner						
Clean Spark Arrestor						

**TO MAXIMIZE THE LIFESPAN OF YOUR PLATE COMPACTOR:** We recommend running your plate compactor at least once a month for 20 to 30 minutes.

# GENERAL SAFETY RULES

 **WARNING!** Read all safety warnings and all instructions. Failure to follow the warnings and instructions may result in electric shock, fire and/or serious injury.

Safety is a combination of common sense, staying alert and knowing how your item works. The term “power tool” in the warnings refers to your mains-operated (corded) power tool or battery-operated (cordless) power tool.

## SAVE THESE SAFETY INSTRUCTIONS.

### WORK AREA SAFETY

- 1. Keep work area clean and well lit.** Cluttered or dark areas invite accidents.
- 2. Do not operate power tools in explosive atmospheres, such as in the presence of flammable liquids, gases or dust.** Power tools create sparks which may ignite the dust or fumes.
- 3. Keep children and bystanders away while operating a power tool.** Distractions can cause you to lose control.

### ELECTRICAL SAFETY

- 1. Power tool plugs must match the outlet. Never modify the plug in any way. Do not use any adapter plugs with earthed (grounded) power tools.** Unmodified plugs and matching outlets will reduce risk of electric shock.
- 2. Avoid body contact with earthed or grounded surfaces such as pipes, radiators, ranges and refrigerators.** There is an increased risk of electric shock if your body is earthed or grounded.
- 3. Do not expose power tools to rain or wet conditions.** Water entering a power tool will increase the risk of electric shock.
- 4. Do not abuse the cord. Never use the cord for carrying, pulling or unplugging the power tool. Keep cord away from heat, oil, sharp edges or moving parts.** Damaged or entangled cords increase the risk of electric shock.
- 5. When operating a power tool outdoors, use an extension cord suitable for outdoor use.** Use of a cord suitable for outdoor use reduces the risk of electric shock.

**6. If operating a power tool in a damp location is unavoidable, use a ground fault circuit interrupter (GFCI) protected supply.** Use of a GFCI reduces the risk of electric shock.

### PERSONAL SAFETY

- 1. Stay alert, watch what you are doing and use common sense when operating a power tool. Do not use a power tool while you are tired or under the influence of drugs, alcohol or medication.** A moment of inattention while operating power tools may result in serious personal injury.
- 2. Use personal protective equipment. Always wear eye protection.** Protective equipment such as a respiratory mask, non-skid safety shoes and hearing protection used for appropriate conditions will reduce the risk of personal injury.
- 3. Prevent unintentional starting. Ensure the switch is in the off-position before connecting to power source and/or battery pack, picking up or carrying the tool.** Carrying power tools with your finger on the switch or energizing power tools that have the switch on invites accidents.
- 4. Remove any adjusting key or wrench before turning the power tool on.** A wrench or a key left attached to a rotating part of the power tool may result in personal injury.
- 5. Do not overreach. Keep proper footing and balance at all times.** This enables better control of the power tool in unexpected situations.
- 6. Dress properly. Do not wear loose clothing or jewelry. Keep your hair and clothing away from moving parts.** Loose clothes, jewelry or long hair can be caught in moving parts.

# GENERAL SAFETY RULES

**⚠ WARNING!** Read all safety warnings and all instructions. Failure to follow the warnings and instructions may result in electric shock, fire and/or serious injury.

Safety is a combination of common sense, staying alert and knowing how your item works. The term “power tool” in the warnings refers to your mains-operated (corded) power tool or battery-operated (cordless) power tool.

## SAVE THESE SAFETY INSTRUCTIONS.

**7. If devices are provided for the connection of dust extraction and collection facilities, ensure these are connected and properly used.** Use of dust collection can reduce dust-related hazards.

### POWER TOOL USE AND CARE

**1. Do not force the power tool. Use the correct power tool for your application.** The correct power tool will do the job better and safer at the rate for which it was designed.

**2. Do not use the power tool if the switch does not turn it on and off.** Any power tool that cannot be controlled with the switch is dangerous and must be repaired.

**3. Disconnect the plug from the power source and/or the battery pack from the power tool before making any adjustments, changing accessories, or storing power tools.** Such preventive safety measures reduce the risk of starting the power tool accidentally.

**4. Store idle power tools out of the reach of children and do not allow persons unfamiliar with the power tool or these instructions to operate the power tool.** Power tools are dangerous in the hands of untrained users.

**5. Maintain power tools. Check for misalignment or binding of moving parts, breakage of parts and any other condition that may affect the power tool's operation. If damaged, have the power tool repaired before use.** Many accidents are caused by poorly maintained power tools.

**6. Keep cutting tools sharp and clean.** Properly maintained cutting tools with sharp cutting edges are less likely to bind and are easier to control.

**7. Use the power tool, accessories and tool bits, etc. in accordance with these instructions, taking into account the working conditions and the work to be performed.** Use of the power tool for operations different from those intended could result in a hazardous situation.

**8. Use clamps to secure your workpiece to a stable surface.** Holding a workpiece by hand or using your body to support it may lead to loss of control.

**9. KEEP GUARDS IN PLACE** and in working order.

### SERVICE

**1. Have your power tool serviced by a qualified repair person using only identical replacement parts.** This will ensure that the safety of the power tool is maintained.

### CALIFORNIA PROPOSITION 65 WARNING

Some dust created by power sanding, sawing, grinding, drilling, and other construction activities may contain chemicals, including lead, known to the State of California to cause cancer, birth defects, or other reproductive harm. Wash hands after handling. Some examples of these chemicals are:

- Lead from lead-based paints.
- Crystalline silica from bricks, cement, and other masonry products.
- Arsenic and chromium from chemically treated lumber.

Your risk from these exposures varies depending on how often you do this type of work. To reduce your exposure to these chemicals, work in a well-ventilated area with approved safety equipment such as dust masks specially designed to filter out microscopic particles.

# PLATE COMPACTOR SAFETY WARNINGS


 **WARNING!** Read all safety warnings and all instructions. Failure to follow the warnings and instructions may result in electric shock, fire and/or serious injury.

Safety is a combination of common sense, staying alert and knowing how your item works. The term “power tool” in the warnings refers to your mains-operated (corded) power tool or battery-operated (cordless) power tool.

## SAVE THESE SAFETY INSTRUCTIONS.

### PLATE COMPACTOR SAFETY

1. Do not operate the unit near an open flame.
2. Do not smoke near the plate compactor.
3. Always turn the plate compactor off before refueling. Allow the plate compactor to cool for at least 2 minutes before removing fuel cap. Loosen the cap slowly to relieve pressure in the fuel tank.
4. Do not overfill the fuel tank. Gasoline may expand during operation. Do not fill to the top of the tank. Allow for expansion.
5. Always check for spilled fuel before operating.
6. Empty the fuel tank before storing or transporting the plate compactor.
7. Do not use the unit in rainy or damp conditions.
8. Do not allow children or non-qualified persons to operate the plate compactor.
9. Do not touch hot surfaces. Pay attention to warning labels on the machine identifying hot parts.
10. Allow the unit to cool down after use before touching the engine or areas of the plate compactor that become hot during use.
11. Only use the unit for its intended purposes.
12. Only operate the unit on dry, level surfaces.
13. Turn the engine switch “OFF” when the engine is not running.
14. Do not operate or service this machine before reading the entire manual.
15. Never operate this equipment without proper protective clothing, shatterproof ANSI-approved glasses, steel-toed boots, and other protective job site devices.
16. Never operate this equipment while under the influence of drugs or alcohol or while feeling fatigued or ill.
17. Always check the machine for loosened threads or bolts before starting.
18. Always wear proper respiratory, hearing, and eye protection during operation.
19. Manufacturer does not assume responsibility for any accident due to equipment modifications and will also void the warranty.
20. Never use accessories or attachments that are not recommended by WEN for this model of plate compactor.
21. DO NOT add fuel to the plate compactor if it is placed on top of a plastic surface such as a pickup truck bed with a plastic liner. This creates the possibility of ignition or explosion due to static electricity buildup.
22. Always refuel in well-ventilated areas. Never operate near open flames, sparks, or any other item that could cause the fumes of the gasoline to ignite.
23. Before performing compacting work near buildings or above pipelines, check the effect of the vibrations on the buildings and pipelines. If necessary, immediately stop the compacting work.

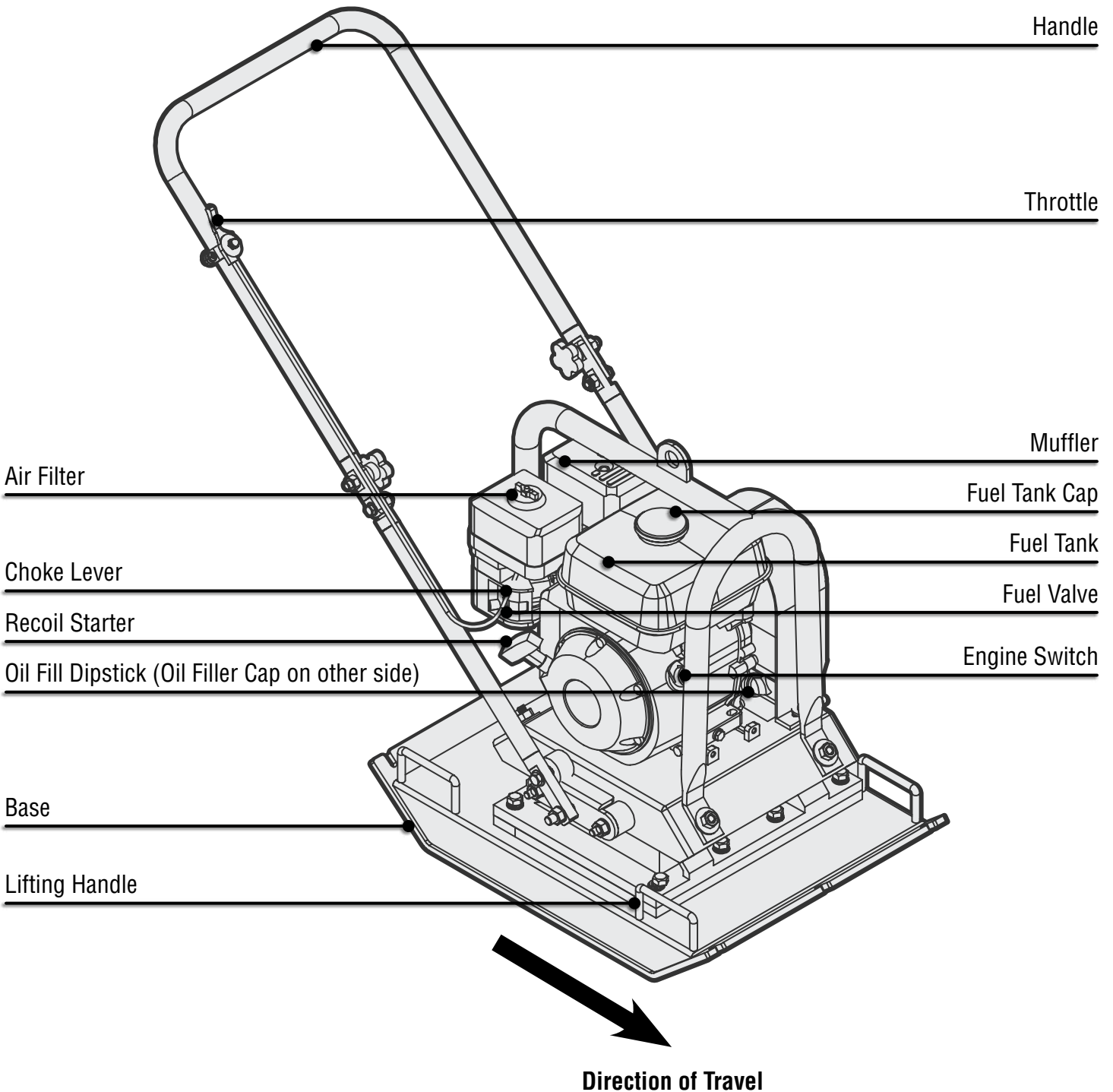
 **WARNING!** This unit produces heat when running. Temperatures near exhaust can exceed 1500° F (650° C).

# KNOW YOUR PLATE COMPACTOR

## UNPACKING

With the help of a friend or trustworthy foe, such as one of your in-laws, carefully remove the plate compactor from the packaging and place it on a sturdy, flat surface. Make sure to take out all contents and accessories. Do not discard the packaging until everything is removed. Check the packing list below to make sure you have all of the parts and accessories. If any part is missing or broken, please contact customer service at **1-847-429-9263** (M-F 8-5 CST), or email [techsupport@wenproducts.com](mailto:techsupport@wenproducts.com).

Refer to the following diagrams to become familiarized with all the parts and controls of your plate compactor. The components will be referred to later in the manual for assembly and operation instructions.





## ASSEMBLY & ADJUSTMENTS

**NOTE:** In order to best protect the plate compactor while in the package, this product comes with some components disassembled. Please complete the following assembly steps before proceeding to use the plate compactor.

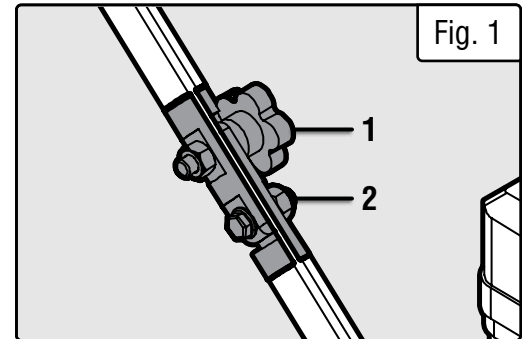
**⚠ WARNING!** This plate compactor is heavy. Some procedures may require lifting equipment or two people.

### HANDLE ASSEMBLY

**NOTE:** The plate compactor is shipped with the lower handle already assembled and attached to the plate.

**To complete the handle assembly:**

1. Loosen the knob (Fig. 1 - 1) in the middle of the handle and swing the upper handle into place.
2. Insert one bolt, washer, and nut into the hole (Fig. 1 - 2) directly below the plastic knob. Tighten the nut and the plastic knob.
3. Repeat the process on the other side of the handle.



## PLATE COMPACTOR PREPARATION

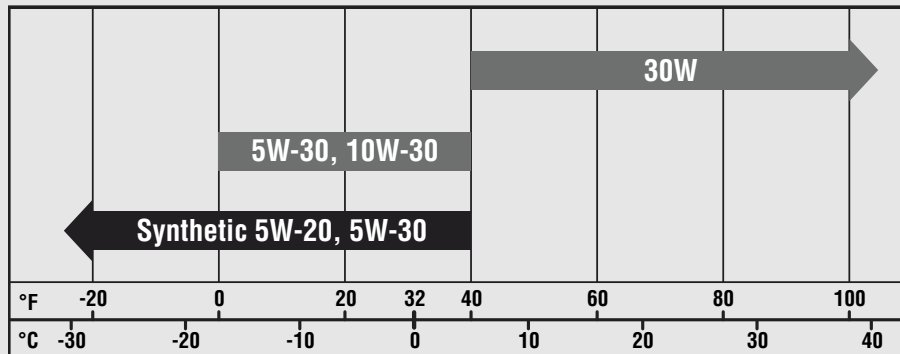
The following section describes the necessary steps to prepare the plate compactor for use. If you are unsure about how to perform any of the steps please call **1-847-429-9263** (M-F 8-5 CST) for customer service. Failure to perform these steps properly can damage the plate compactor or shorten its life.

### STEP 1 - ADD/CHECK OIL

The plate compactor is shipped without oil. You must add the proper amount of oil before operating the plate compactor for the first time. The oil capacity of the engine crankcase is **20 fl. oz (0.6 L)**.

#### ENGINE OIL RECOMMENDATIONS

Select good quality detergent oil bearing the American Petroleum Institute (API) service classifications SJ, SL, or SM (synthetic oils may be used). Select the SAE viscosity grade of oil that matches the expected operating temperature.



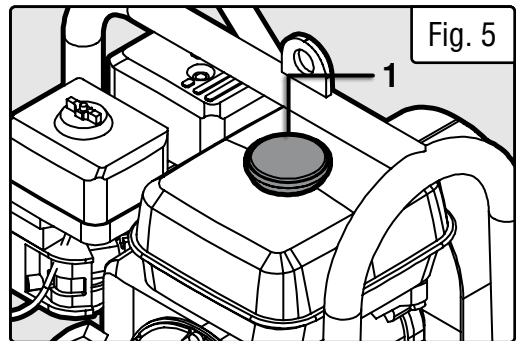
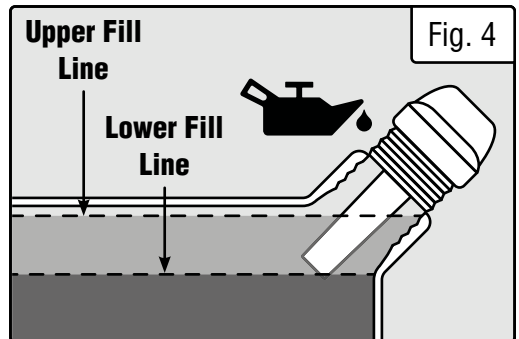
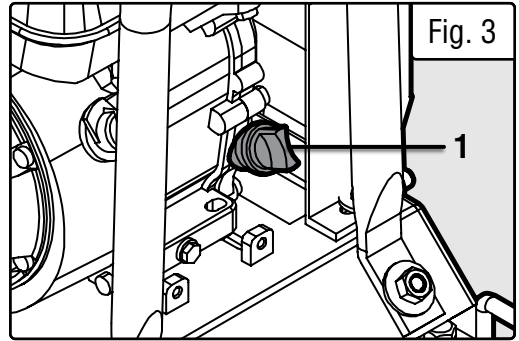
- **30W Engine Oil**  
Temperatures above 40°F
- **5W-30 & 10W-30 Engine Oil**  
Temperatures between 0°F - 40°F
- **Synthetic 5W-20 & 5W-30**  
Temperatures below 40°F

**⚠ CAUTION!** Air cooled engines run hotter than automotive engines. The use of non-synthetic multi-viscosity oils (5W-30, 10W-30, etc.) in temperatures above 40° F will result in higher than normal oil consumption. When using a multi-viscosity oil, check the oil level more frequently than you would otherwise.

# PLATE COMPACTOR PREPARATION

## FILLING THE CRANKCASE WITH OIL

1. Make sure the plate compactor is on a sturdy, flat surface. Tilting the plate compactor to assist in filling the oil will cause oil to flow into engine areas and may cause damage. Keep the plate compactor level!
2. Remove the oil filler cap or dipstick (Fig. 3 - 1) from the engine.
3. Using a funnel, add the appropriate type and amount of oil into the crankcase. Fill the crankcase to the upper fill line so you can visually see the oil coming halfway up the oil fill threads (Fig. 4).
4. Check for oil leaks. Reinstall the oil dipstick before starting the engine.



**⚠ WARNING: RISK OF EXPLOSION. HIGHLY FLAMMABLE:** This plate compactor may emit highly flammable and explosive gasoline vapors, which can cause severe burns or even death, if ignited. A nearby open flame can lead to explosion even if not directly in contact with gasoline.

- Do not operate near open flame, heat, or any other ignition source. Do not smoke near the plate compactor.
- Always operate on a firm, level surface.
- Always turn the plate compactor OFF before refueling. Allow the unit to cool for at least 2 minutes before removing the fuel cap. Loosen the cap slowly to relieve pressure in the tank.
- Do not overfill the fuel tank. Gasoline may expand during operation. Do not fill to the top of the tank. Allow for expansion. Always check for spilled fuel before operating.
- If fuel spills, move the plate compactor at least 30 feet away from the spill and wipe clean any spilled fuel before starting the engine.
- Empty the fuel tank before storing or transporting the unit.

## STEP 2 - ADD GASOLINE

Use fresh (within 30 days from purchase), lead-free gasoline with a minimum of 87 octane rating. Do not mix oil with gasoline.

1. Make sure the plate compactor is on a sturdy, flat surface.
2. Unscrew the fuel cap (Fig. 5 - 1) and set aside.
3. Slowly add unleaded gasoline to the fuel tank. Be careful not to overfill. The capacity of the fuel tank is **1 gallon**.
4. Reinstall the fuel cap and wipe clean any spilled gasoline with a dry cloth.

## STEP 3 - CHECK FOR LOOSE PARTS

Before using the plate compactor, always check for broken or loose parts. Any screw, bolt or nut runs the risk of loosening due to the vibratory nature of this machine. Always make sure to properly tighten these types of parts prior to operation to best prevent injury. Remove dirt and dust, particularly around the area of the recoil starter and the foot of the machine.

- Never use an oil/gasoline mixture.
- Never use gasoline over 30 days old.
- Avoid getting dirt or water in the fuel tank.
- Gasoline can age in the tank and make starting difficult. Never store the plate compactor for extended periods of time with fuel in the tank.

## ***PLATE COMPACTOR PREPARATION***

### **ENGINE BREAK-IN PROCEDURE**

Conduct the following when you receive your plate compactor in order to prolong the engine's service life. This procedure helps to seat the piston rings properly in the cylinder, and will reduce overall wear on the engine.

After the first 8 hours of operation, change the oil, then change it again after the first 25 hours.

## ***OPERATION***

Before starting the plate compactor, make sure you have read and performed all of the steps in the "Plate Compactor Preparation" section of this manual. If you are unsure about how to perform any of the steps in this manual please call **1-847-429-9263** (M-F 8-5 CST) for customer service.

### **⚠ DANGER: CARBON MONOXIDE**

Using a plate compactor indoors **CAN KILL YOU IN MINUTES**. Plate compactor exhaust contains carbon monoxide (CO). This is a poison gas you cannot see or smell. If you can smell the plate compactor exhaust, you are breathing CO. But even if you cannot smell the exhaust, you could be breathing CO.

**NEVER** use a plate compactor inside homes, garages, crawl spaces, or other partially enclosed areas. Deadly levels of carbon monoxide can build up in these areas. Using a fan or opening windows and doors does NOT supply enough fresh air. **ONLY** use a plate compactor outside and far away from windows, doors, and vents. These openings can pull in plate compactor exhaust.

Even if you use a plate compactor correctly, CO may leak into the home. **ALWAYS** use a battery-powered or battery-backup CO alarm in the home. If you start to feel sick, dizzy, or weak after the plate compactor has been running, move to fresh air **RIGHT AWAY**. See a doctor. You may have carbon monoxide poisoning.

**⚠ WARNING:** The exhaust from this product contains chemicals known to the State of California to cause cancer, birth defects, or other reproductive harm.

**⚠ WARNING:** Do not operate the plate compactor near open flame or flammable materials. This plate compactor may emit highly flammable and explosive gasoline vapors, which can cause severe burns or even death if ignited. A nearby open flame can lead to explosion even if it isn't directly in contact with gasoline. Do not smoke near the plate compactor.

**⚠ WARNING:** Do not use in rainy or wet conditions. Do not allow children or non-qualified persons to operate the plate compactor.

# OPERATION

## STARTING THE PLATE COMPACTOR

1. Check the oil and fuel levels.
2. Turn the fuel valve (Fig. 6 - 1) to the “ON” position.
3. Move the choke lever (Fig. 6 - 2) to the “START” position.
4. Set the engine switch (Fig. 7 - 1) to the “ON” position.
5. Move throttle lever (Fig. 8 - 1) to “MIN” position.
6. Pull on the recoil starter handle (Fig. 8 - 2) slowly until a slight resistance is felt. Then pull quickly to start the engine. Return cord gently into the machine. Never allow the cord to snap back.
7. If engine fails to start, repeat steps 1 through 6.

**NOTE:** After repeated failed attempts to start the engine, please consult the troubleshooting guide before attempting again. If problems persist, please call **1-847-429-9263** (M-F 8-5 CST).

8. Once the engine has started, slowly return the choke lever all the way to the “OPEN” position.
9. Allow the plate compactor to run for several minutes before increasing the speed using the throttle.
10. Move the throttle lever to the “MAX” position to engage the plate.

This plate compactor is designed for compacting loose, granular soils, gravel, and paving stones. It is intended to be used in confined areas and areas next to structures such as walls, curbs, and foundations.

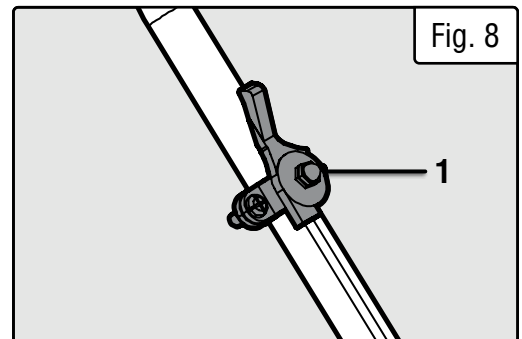
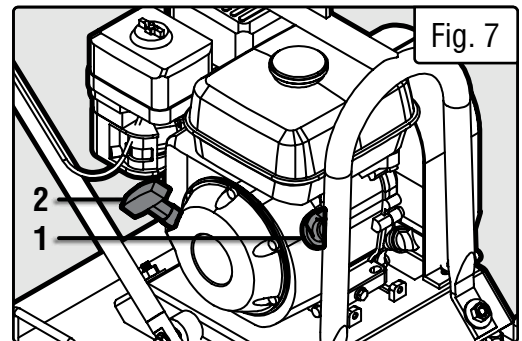
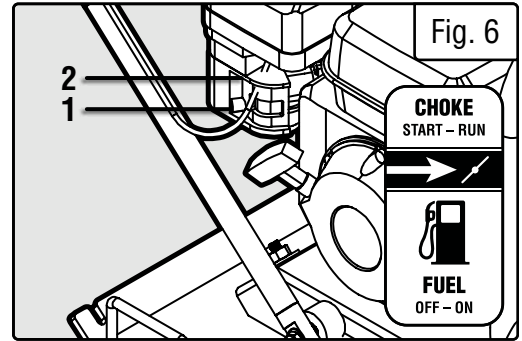
When using the plate on paving stones, attach a pad to the bottom of the plate to prevent chipping or grinding the stones' surfaces. A special polyurethane pad (**Item no. 56035-047**) designed for this purpose is available as an optional accessory and can be purchased at [www.wen-products.com](http://www.wen-products.com) or by calling **1-847-429-9263** (M-F 8-5 CST).

This plate compactor is not recommended for compacting cohesive soils with heavy clay content.

Run the engine at full throttle and allow the plate to pull itself along at its normal speed. When operating on an incline it may be necessary to assist the plate by pushing it forward slightly. When operating downhill, hold the plate back slightly if it begins to pick up speed. Depending on the material being compacted, three or four passes are recommended to achieve the best compaction.

While a certain amount of moisture in the soil is necessary, excessive moisture may cause soil particles to stick together and prevent good compaction. If soil is extremely wet, allow it to dry somewhat before compacting.

If the soil is so dry that it creates dust clouds during operation, some moisture should be added to the ground material to improve compaction. This will also reduce service to the air filter. For compacting asphalt, use a water tank to wet the asphalt and the underside of plate. This will prevent asphalt material from sticking and reduce the frequency of needing to service the air filter. Two passes are usually sufficient enough to ensure good compaction.



**⚠ WARNING! DO NOT** operate the plate on concrete or on extremely hard, dry, compacted surfaces. The plate will jump rather than vibrate and could damage both the plate and the engine.

## OPERATION

To avoid injury, keep hands, fingers, and feet away from the compactor base. Grip the handle of the compactor firmly with both hands. Adjust the throttle lever between its “MIN” to “MAX” position, depending on the desired vibration speed.

**IMPORTANT!** The plate compactor should not be used for more than two hours at a time without any breaks to cool down, as the heat of operation may cause the lubricant in the bearings to liquefy, which could leak out and cause the vibrating assembly to seize or break. Let the compactor rest every hour in very hot (above 90° F) temperatures.

The handle can be adjusted to both sides to aid in turnarounds in tight spaces, but the compactor only travels in one direction. The direction of travel is indicated on p. 8 and on the label on the belt cover.

Always keep a safe distance away from the edge of ditches and avoid any actions that may cause the plate compactor to topple over.

Always ascend slopes carefully in a direct path. Back up slopes to prevent the plate compactor from toppling back onto the operator.

**IMPORTANT!** At this point the user should be familiar with the procedures. If you have not yet read the previous sections, go back and read it now.

### STEP 1 - CHECK THE OIL

Oil consumption is normal during plate compactor usage. The plate compactor is equipped with a low-oil shutoff to protect it from damage. The oil level in the engine should be checked before each use to ensure that the engine crankcase contains sufficient lubricant. If oil level is low, refer back to “Plate Compactor Preparation” on p. 9.

### STEP 2 – CHECK THE FUEL LEVEL

Before starting the plate compactor, check to see that there is sufficient gasoline in the fuel tank. The fuel gauge on top of the plate compactor will indicate the fuel level in the tank. Add gasoline if necessary but leave sufficient room in tank for expansion. If gasoline is low, refer back to “Plate Compactor Preparation” on p. 10.

**⚠ WARNING: RISK OF EXPLOSION. HIGHLY FLAMMABLE:** This plate compactor may emit highly flammable and explosive gasoline vapors, which can cause severe burns or even death, if ignited. A nearby open flame can lead to explosion even if not directly in contact with gasoline.

- Do not operate near open flame, heat, or any other ignition source. Do not smoke near the plate compactor.
- Always operate on a firm, level surface.
- Always turn the plate compactor OFF before refueling. Allow the unit to cool for at least 2 minutes before removing the fuel cap. Loosen the cap slowly to relieve pressure in the tank.
- Do not overfill the fuel tank. Gasoline may expand during operation. Do not fill to the top of the tank. Allow for expansion. Always check for spilled fuel before operating.
- If fuel spills, move the plate compactor at least 30 feet away from the spill and wipe clean any spilled fuel before starting the engine.
- Empty the fuel tank before storing or transporting the unit.

## OPERATION

### STOPPING THE PLATE COMPACTOR

1. Move the throttle lever to the “MIN” position to disengage the compactor.
2. Turn the fuel valve to the “OFF” position. Let the engine run until all fuel in the carburetor is consumed and the engine shuts down automatically.
3. Turn the engine switch to the “OFF” position.

**FOR EMERGENCY SHUTDOWNS**, move the throttle to the idle position and turn the engine switch OFF.

**⚠ WARNING!** Allow the plate compactor to cool off for several minutes before touching areas that become hot during use.

**⚠ CAUTION!** Allowing gasoline to sit in the fuel tank for long periods of time can make it difficult to start the plate compactor in the future. Never store the plate compactor for over two weeks with fuel in the fuel tank. If sitting more than a month, drain the carburetor.

## MAINTENANCE

Proper routine maintenance will help prolong the life of the machine. Please perform maintenance checks according to the schedule below. If there are any questions about the maintenance procedures listed in this manual, please call **1-847-429-9263** M - F 8 - 5 CST. It is best practice to drain your carburetor after every use. Always drain before storage. Do not store the plate compactor with fuel inside the tank for more than 2 weeks. This will cause the carburetor to clog, and it will need to be disassembled and cleaned before the next use. Run the plate compactor for 15 minutes a month to maximize its lifespan. Refer to the next page for drainage procedures.

**⚠ CAUTION!** Never perform maintenance operations while the plate compactor is running.

Recommended Maintenance Schedule		Every 8 Hours or Daily	Every 25 Hours	Every 3 Months or 50 Hours	Every 6 Months or 100 Hours	Before Storage	As Necessary
<b>Engine Oil</b>	Check Level	x					
	Replace	x**	x**	x*			x
<b>Air Filter</b>	Check			x*			
	Clean			x*			
<b>Spark Plug</b>	Check/Clean/Regap				x		
	Change				x		x
<b>Fuel</b>	Check Level	x					
	Drain					x	x
<b>Carburetor</b>	Drain	x					x
<b>Spark Arrestor</b>	Check/Clean				x		

\* Clean/change more often under dusty conditions or operating under heavy load.

\*\* Change the oil after the first 8 hours of operation, after the first 25 hours of operation, and every 50 hours after that.

## CLEANING THE PLATE COMPACTOR

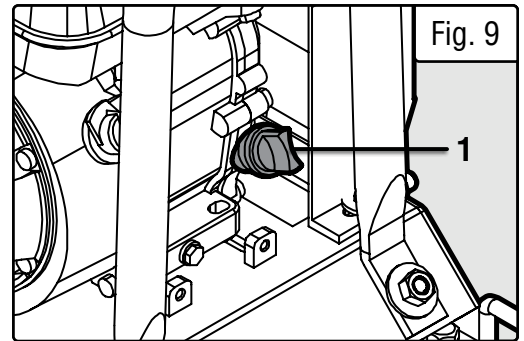
Never clean the plate compactor when it is running! If the plate compactor becomes dirty, clean the exterior with a damp cloth, a soft brush, or a vacuum / pressurized air.

## CHECKING THE OIL

Check the oil level of the engine according to the Recommended Maintenance Schedule. The engine is equipped with an automatic shutoff to protect it from running with low oil pressure. The engine should be checked before each use for proper oil level. This is a critical step for proper engine maintenance.

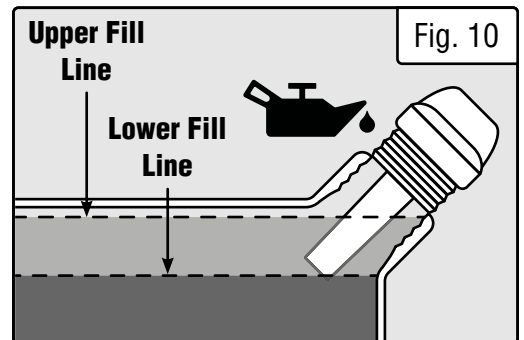
## FILLING CRANKCASE WITH OIL

1. Make sure the plate compactor is on a sturdy, flat surface. Tilting the plate compactor to assist in filling the oil will cause oil to flow into engine areas and may cause damage. Keep the plate compactor level!
2. Remove the oil filler cap or dipstick (Fig. 9 - 1) from the engine.
3. Using a funnel, add the appropriate type and amount of oil into the crankcase. Fill the crankcase to the upper fill line so you can visually see the oil coming halfway up the oil fill threads (Fig. 10).
4. Check for oil leaks. Reinstall the oil dipstick before starting the engine.



## CHANGING THE OIL

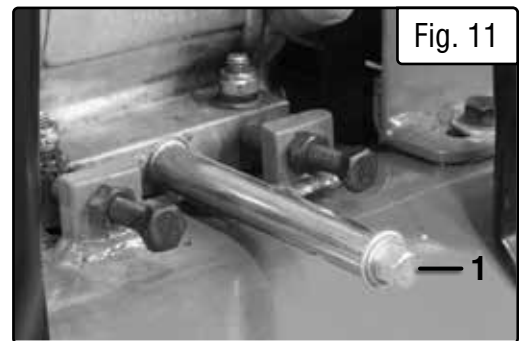
Change the oil when the engine is warm. This will allow for complete drainage. Change the oil more often if operating under heavy load or high ambient temperatures. It is also necessary to drain the oil from the crankcase if it has become contaminated with water or dirt. The oil capacity of the engine in this plate compactor is 20 fl. oz (0.6 L). Add oil when the oil level is low.



## DRAINING THE OIL FROM THE ENGINE

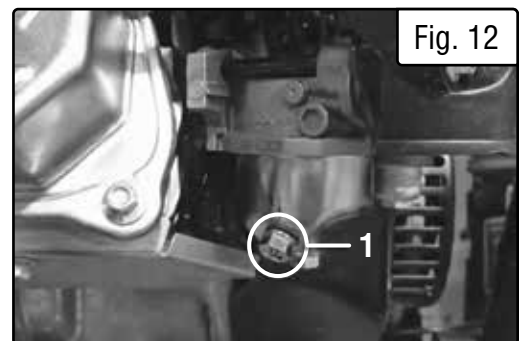
1. Place a container underneath the engine to catch oil as it drains.
2. Use an adjustable wrench or 12mm combination wrench to hold the flats on the oil drain extension tube. Use a 10mm wrench or socket to unscrew the oil drain plug (Fig. 11 - 1). Allow all the oil to drain from the engine.
3. Reinstall the oil drain plug and tighten with a 10mm socket or wrench.

**NOTE:** Never dispose of used motor oil in the trash or down a drain. Please call your local recycling center or auto garage to arrange oil disposal.



## DRAINING THE CARBURETOR

1. Turn the fuel valve to "OFF".
2. Locate the drain screw (Fig. 8 - 1) on the carburetor bowl. Prepare a pan, jar, or other approved gasoline storage container to catch the fuel that will leak out.
3. Loosen the drain screw and allow the fuel to drain completely. When it is done draining, re-tighten the drain screw.

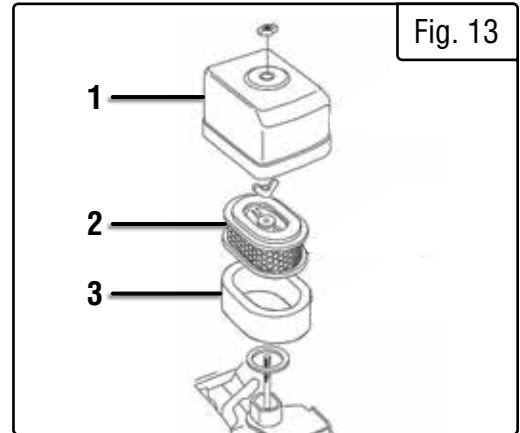


# MAINTENANCE

## AIR CLEANER MAINTENANCE

Routine maintenance of the air cleaner helps maintain proper air flow to the carburetor. Check that the air cleaner is free of excessive dirt.

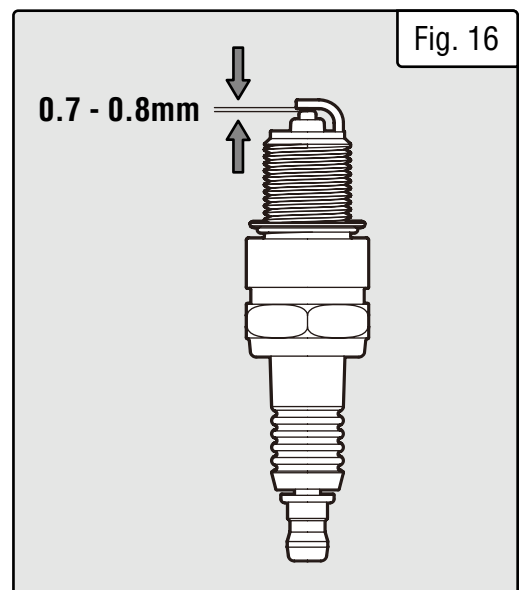
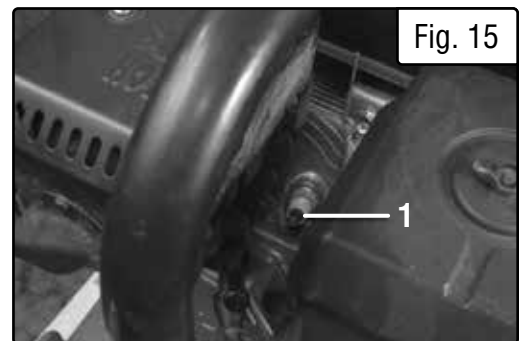
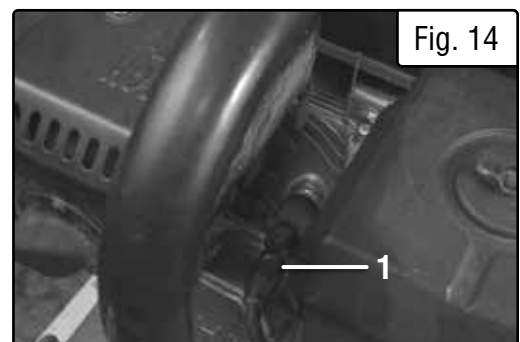
1. Remove the air cleaner cover (Fig. 13 - 1). Remove both elements and inspect them for holes or tears. Replace damaged elements.
2. Tap the paper element (Fig. 13 - 2) lightly to remove excess dirt. Replace the paper element if it appears heavily soiled.
3. Wash the foam element (Fig. 13 - 3) in solution of mild detergent and warm water. Rinse thoroughly in clean water. Allow element to dry thoroughly. Soak element in clean engine oil and squeeze out excess oil.



## SPARK PLUG MAINTENANCE

The spark plug is important for proper engine operation. A good spark plug should be intact, free of deposits, and properly gapped. To inspect the spark plug (Torch F6TC (NGK BP6ES)):

1. Pull on the spark plug boot (Fig. 14 - 1) to remove it.
2. Unscrew the spark plug (Fig. 15 - 1) from the plate compactor using the spark plug wrench included with this product. .
3. Visually inspect the spark plug. If it is cracked or chipped, discard and replace with a new spark plug of the same model (Torch F6TC (NGK BP6ES)).
4. Measure the plug gap with a spark plug gauge (Fig. 16). The gap should be 0.7-0.8mm (0.028 - 0.031 in).
5. If you are re-using the spark plug, use a wire brush to clean any dirt from around the spark plug base and then re-gap the spark plug.
6. Screw the spark plug back into its place on the plate compactor using the spark plug wrench. Do not over-tighten spark plug. Recommended tightening of spark plug is  $\frac{1}{2}$  to  $\frac{3}{4}$  of a turn after spark plug gasket contacts spark plug hole, or 15 ft-lbs (20 Nm). Reinstall the spark plug boot.



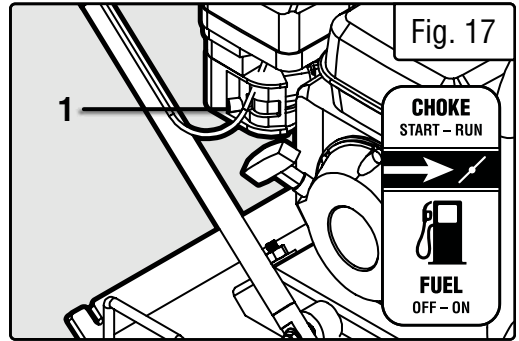


## MAINTENANCE

### DRAINING THE FUEL TANK

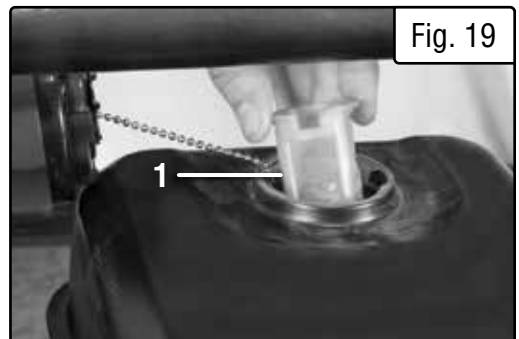
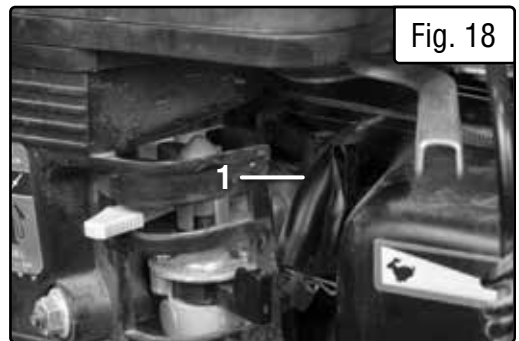
Clean the fuel tank each year or before storing the plate compactor for extended periods of time. To drain the fuel tank and carburetor:

1. Turn the fuel valve (Fig. 17 - 1) to the “OFF” position.
2. Remove the fuel line (Fig. 18 - 1) between the fuel valve and carburetor.



**CAUTION!** A small amount of fuel may leak from the hose during removal.

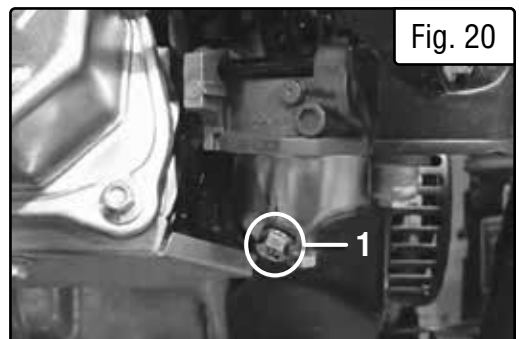
3. Attach a fuel line (not included with the plate compactor) to the exposed end of the fuel valve.
4. Position the fuel line into an appropriate container and open the fuel valve allowing fuel to flow into the container.
5. Once the fuel is drained, shut off the fuel valve.
6. Start and run the engine until the fuel runs out.
7. Unscrew the gas tank cap from the gas tank.
8. Remove the fuel filter cup (Fig. 19 - 1) located inside.
9. Empty the fuel filter cup of any fuel and clean.
10. Reinstall the fuel filter cup.
11. Screw the gas tank cap back onto the gas tank.
12. Store the emptied gasoline in a suitable place.



**CAUTION!** Do not store fuel for more than 3 months.

### DRAINING THE FUEL TANK THROUGH THE CARBURETOR

1. Turn fuel valve (Fig. 17 - 1) to the “ON” position.
2. Loosen the drain screw (Fig. 20 - 1) from carburetor. Be sure to have a vessel prepared to catch the fuel that will flow out.
3. Ensure that all the fuel has left the tank, fuel line, and carburetor.
4. Tighten the drain screw.
5. Turn the fuel valve to the “OFF” position.



## MAINTENANCE

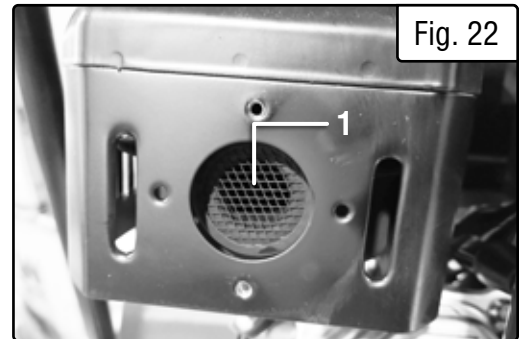
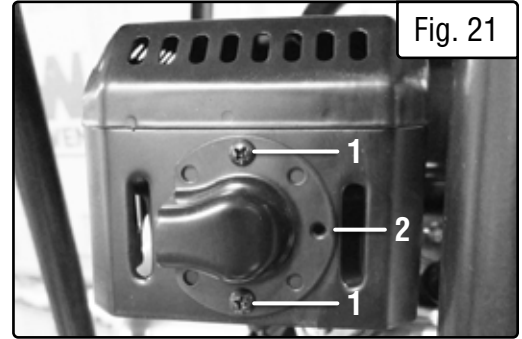
### CLEANING THE SPARK ARRESTOR

1. Let the engine and muffler cool completely.
2. Remove the two Philips-head screws (Fig. 21 - 1) and the deflector cover (Fig. 21 - 2).
3. Use a wire brush to clean the spark arrestor screen (Fig. 22 - 1).

### LUBRICATING THE VIBRATING ASSEMBLY BEARINGS

Check the vibrating assembly bearings every 50 hours (more often if the plate compactor is used heavily or used in high temperatures) and add more grease to the bearings if necessary. Use an NLGI #2 EP lithium-based grease. For detailed instructions on how to maintain the vibrating assembly, please visit the link below, or scan the QR code:

[bit.ly/3J7jiAN](https://bit.ly/3J7jiAN)



### STORING THE PLATE COMPACTOR

If the unit is being stored for short periods of time (30 to 60 days), then when taking the unit out of storage, add gasoline and fuel stabilizer in the proper ratio to the tank until the tank is full.

**NOTE:** Filling the tank reduces the amount of air in the tank and helps reduce deterioration of fuel. Run the engine for 5 – 10 minutes allowing stabilized fuel mixture to circulate through the carburetor.

When storing the plate compactor for extended periods of time:

- Drain the fuel tank and the carburetor.
- Change oil.
- Do not obstruct any ventilation openings.
- Keep the plate compactor in a cool dry area.

When transporting plate compactor:

- Tighten fuel cap. Drain the fuel tank if possible.
- Keep the plate compactor upright. Never place plate compactor side down. Doing so will make it difficult to start.

**⚠ CAUTION!** Never place any type of storage cover on the plate compactor while it is still hot.

## TROUBLESHOOTING GUIDE

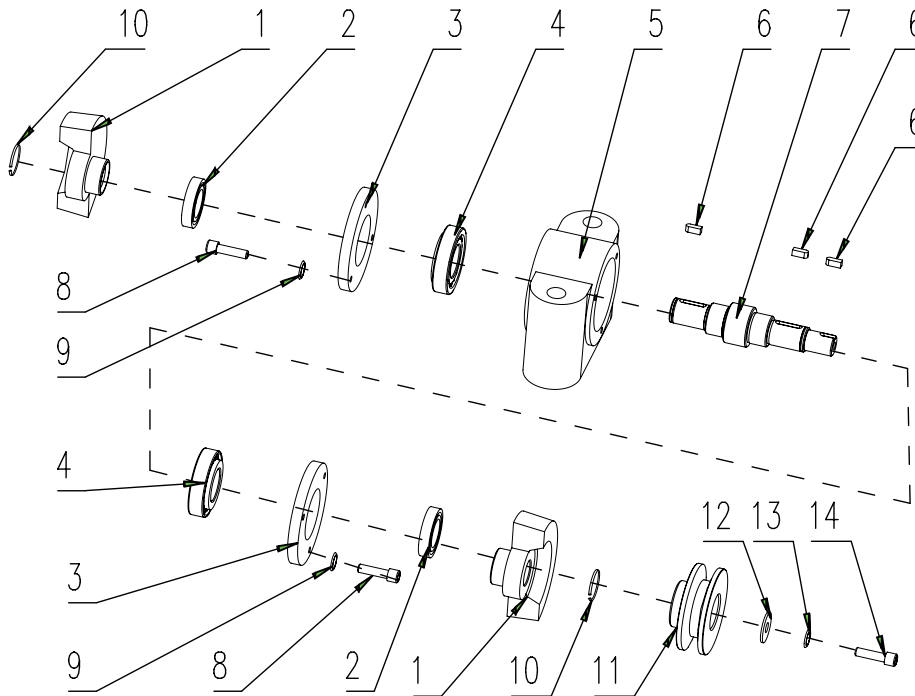
**⚠ WARNING!** Stop using the plate compactor immediately if any of the following problems occur or risk serious personal injury. If you have any questions, please contact customer service at **1-847-429-9263** (M-F 8-5 CST), or email [techsupport@wenproducts.com](mailto:techsupport@wenproducts.com).

PROBLEM	CAUSE	SOLUTION
<b>Engine will not start.</b>	1. Engine switch is set to "OFF."	1. Set engine switch to "ON."
	2. Fuel valve is turned to "OFF."	2. Turn the fuel valve to the "ON" position.
	3. Choke is open.	3. Close the choke.
	4. Engine is out of fuel.	4. Add gasoline.
	5. Engine is filled with contaminated or old gasoline.	5. Change the gasoline in the gas tank and drain/clean the carburetor.
	6. Spark plug is dirty.	6. Clean spark plug.
	7. Spark plug is broken.	7. Replace spark plug.
	8. Plate compactor is not on a level surface.	8. Move plate compactor to a level surface to prevent low oil shutdown from triggering.
	9. Oil is low.	9. Add or replace oil.
	10. Carburetor is air locked.	10. Shut off the fuel valve and remove the screw from the bottom of the carburetor to allow it to reset.
<b>Engine runs but the plate compactor doesn't work.</b>	1. Operating speed of throttle incorrectly set.	1. Set throttle lever to correct position.
	2. Excess oil.	2. Drain the excess oil.
	3. Clutch or drive belt has slipped.	3. Repair or replace drive belt or clutch.
	4. Spring failure.	4. Replace spiral spring.
	5. Incorrect Engine Speed.	5. Adjust the engine speed to meet the task at hand.
	6. Plate compactor doesn't vibrate.	6. Replace vibrating assembly.
<b>Plate compactor doesn't vibrate.</b>	1. Vibrating assembly seized or broken.	1. Repair or replace the vibrating assembly.
<b>Not enough power behind plate compactor.</b>	1. Air cleaner clogged.	1. Clean or replace the air cleaner element.
	2. Air in fuel line.	2. Bleed air from the fuel line.
	3. Fuel level in carburetor's float chamber is improper.	3. Adjust the carburetor float.
	4. Carbon deposits in cylinder.	4. Clean or replace the cylinder.
	5. Fuel has gone bad.	5. Flush the system and replace with fresh fuel and stabilizer.
<b>Engine overheats.</b>	1. Contaminants in fuel tank.	1. Flush the system and replace with fresh fuel.
	2. Carbon deposits in combustion chamber.	2. Clean / replace crankcase.
	3. Exhaust or muffler clogged.	3. Clean / replace the muffler.
	4. Incorrect spark plug.	4. Replace with correct spark plug.
<b>Recoil starter not working.</b>	1. Dust in rotating parts.	1. Clean the recoil starter assembly.

## EXPLODED VIEW & PARTS LIST

**NOTE:** Replacement parts can be purchased from [wenproducts.com](http://wenproducts.com), or by calling our customer service at **1-847-429-9263**, M-F 8-5 CST. Parts and accessories that wear down over the course of normal use are not covered by the two-year warranty. Not all parts may be available for purchase.

### VIBRATOR ASSEMBLY



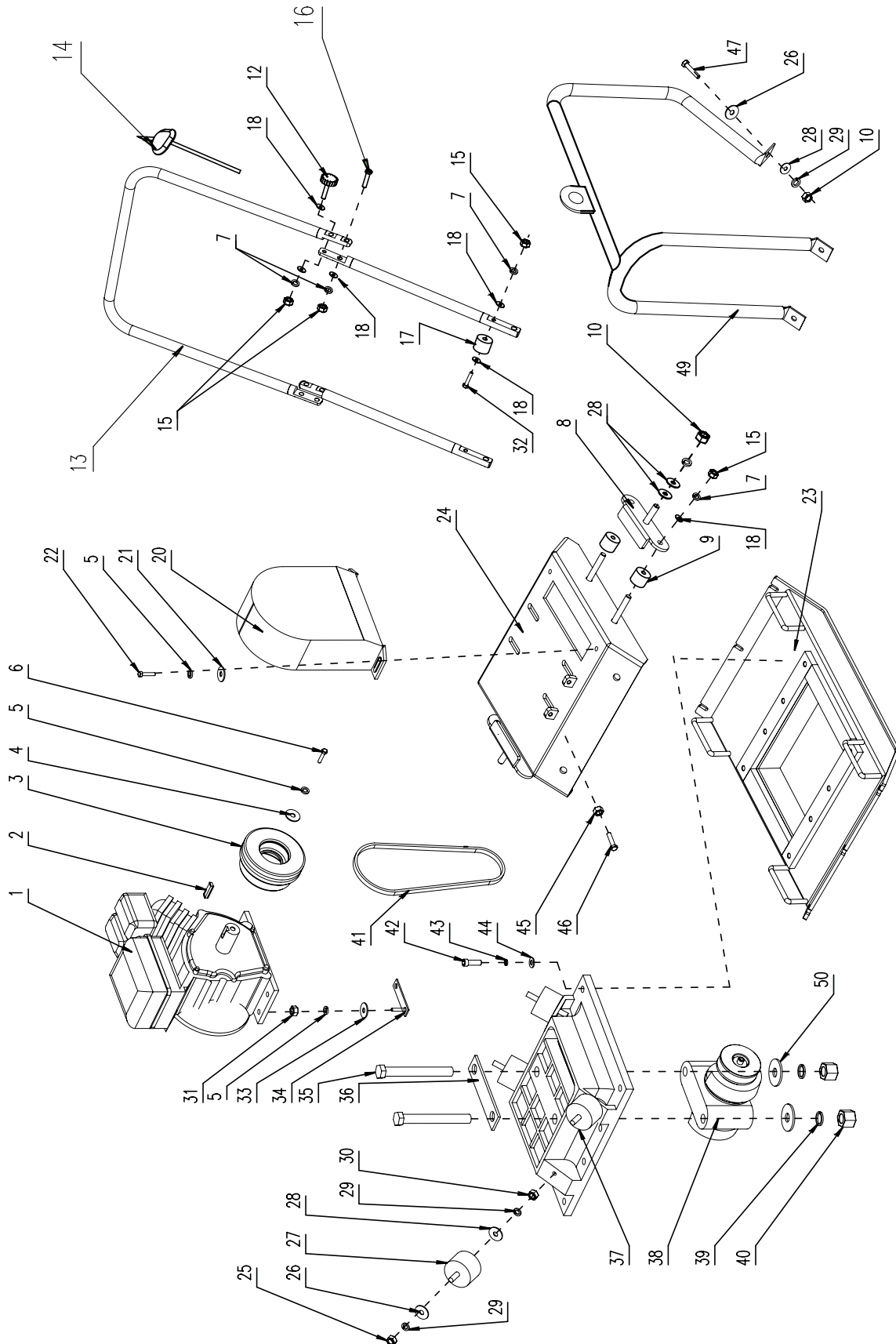
No.	Part Number	Description	Specification	Qty.
1	56035-G-001	Eccentric Block		2
2	56035-G-002	Oil Seal	28 x 50 x 10	2
3	56035-G-003	Bearing Cover		2
4	56035-G-004	Bearing	6306	2
5	56035-G-005	Bearing Seat		1
6	56035-G-006	Key	6 x 6 x 20	3
7	56035-G-007	Main Shaft		1
8	56035-G-008	Inner Hexagon Bolt	M6 x 16	6
9	56035-G-009	Spring Gasket	Ø6	6
10	56035-G-010	Clip	Ø24	2
11	56035-G-011	Pulley	84 x 35	1
12	56035-G-012	Conical Flat Washer	8 x 30 x 6	1
13	56035-G-013	Spring Washer	Ø8	1
14	56035-G-014	Inner Hexagon Bolt	M8 x 20	1

**NOTE:** These parts are available as a complete assembly (vibrator assembly, **part 56035-023**). If you wish to purchase this assembly, please visit [www.wenproducts.com](http://www.wenproducts.com)

Visit [www.wenproducts.com](http://www.wenproducts.com) to purchase the vibrating assembly repair kit (**part 56035-G-004ASM**).

# EXPLODED VIEW & PARTS LIST

## PLATE COMPACTOR



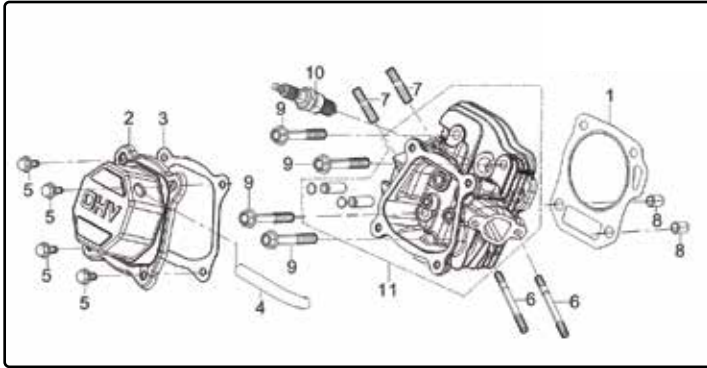
# EXPLODED VIEW & PARTS LIST

## PLATE COMPACTOR

No.	Part No.	Description	Spec	Qty.	No.	Part No.	Description	Spec	Qty.
1	56035-E-000	Engine		1	26	56035-003	Washer	12*35	4
2	56035-147	Key	5*40	1	27	56035-032	Shock Absorber		4
3	56035-020	Pulley		1	28	56035-028	Washer	Ø12	4
4	56035-019	Washer	M8×30×6	1	29	56035-027	Spring Washer	Ø12	4
5	56035-018	Spring Washer	Ø 8	5	30	56035-026	Nut	M12	4
6	56035-017	Hex Bolt	M8*30	1	31	56035-052	Lock Nut	M8	4
7	56035-005-3	Washer	Ø 10	6	32	56035-005-8	Hex Bolt	M10*65	2
8	56035-048	Handle Fixed Plate		2	33	56035-009	Washer	Ø8	4
9	56035-049	Handle Rubber Damper		4	34	56035-053	Hex Bolt	M8*45	2
10	56035-050	Lock Nut	M12	2	35	56035-024	Hex Bolt	M18*140	2
11	56035-005L	Lower Handle		2	36	56035-025	Press Plate		1
12	56035-051	Locked Pin Assembly	M10*35	2	37	56035-031-2	Exciter Seat		1
13	56035-005H	Upper Handle		1	38	56035-023	Vibrator Assembly		1
14	56035-046	Throttle Line Assembly		1	39	56035-022	Spring & Flat Washer	Ø18	2
15	56035-005-2	Lock Nut	M10	2	40	56035-021	Nut	M18	2
16	56035-005-6	Flange Bolt	M10*35	2	41	56035-016-2	Belt, 17 x 787	B-787	1
17	56035-005-7	Handle Damper		2	42	56035-038	Hex Bolt	M12*35	8
18	56035-005-4	Washer	Ø 10	14	43	56035-037	Spring Washer	Ø12	8
20	56035-015	Belt Cover		1	44	56035-036	Flat Washer	Ø12	8
21	56035-014	Washer	Ø8*24	2	45	56035-043	Nut	M8	2
22	56035-012	Bolt	M8*20	2	46	56035-042	Hex Bolt	M8*50	2
23	56035-030	Bottom Plate		1	47	56035-002	Hex Bolt	M10*30	1
24	56035-031-1	Engine Support Plate		1	49	56035-001	Frame		1
25	56035-035	Lock Nut	M12	4	50	56035-054	Washer	Ø18	2

**NOTE:** Not all parts may be available for purchase. Parts and accessories that wear down over the course of normal use are not covered under the warranty.

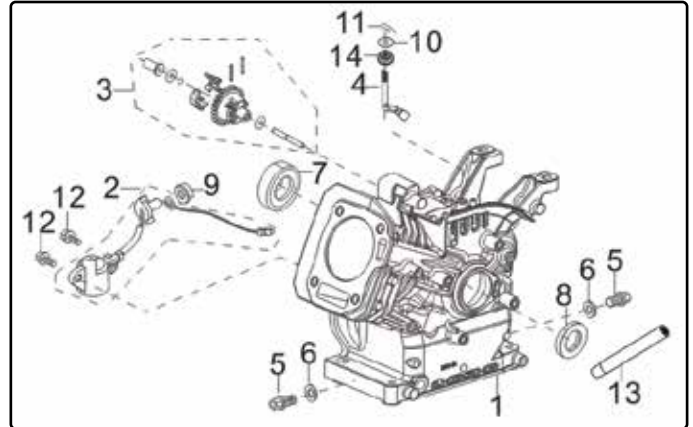
# EXPLODED VIEW & PARTS LIST



**Fig. 1 - Cylinder Head Assembly**

No.	Part No.	Description	Qty.
1 - 1	56035-E-001	Cylinder Head Gasket	1
1 - 2	P54066	Cylinder Head Cover Assembly	1
1 - 3	P54064	Cylinder Head Cover Gasket	1
1 - 4	56035-E-004	Breather Tube	1
1 - 5	P54040	Bolt, M6x12	4
1 - 6	56035-E-006	Stud, M6x113	2
1 - 7	P54058	Stud, M8x34	2
1 - 8	P54048	Pin	2
1 - 9	P54062	Cylinder Head Bolt, M8x60	4
1 - 10	P54060	Spark Plug	1
1 - 11	P54054	Cylinder Head Subassembly	1

**NOTE:** The entire engine is available as a single assembly under model number **56035-E-000**.

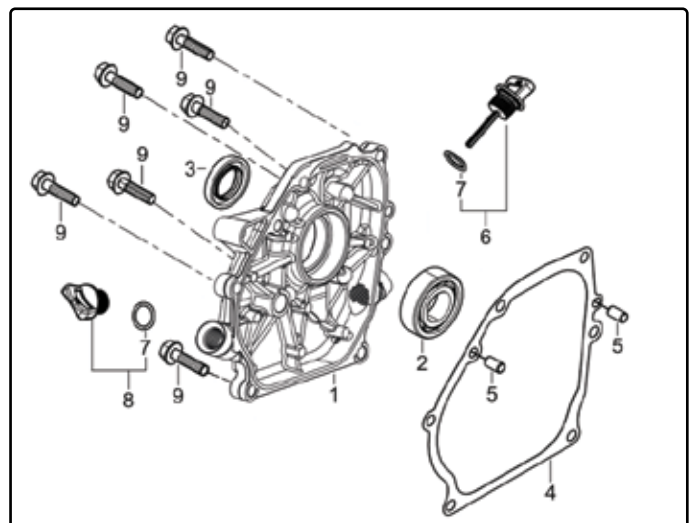


**Fig. 2 - Crankcase Assembly**

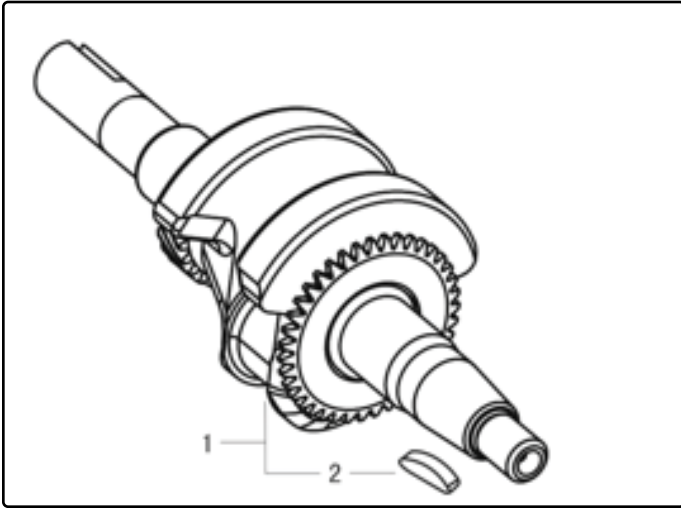
No.	Part No.	Description	Qty.
2 - 1	56035-E-012	Crankcase Subassembly	1
2 - 2	P54020	Engine Oil Sensor	1
2 - 3	P54031	Governor Gear Assembly	1
2 - 4	P54014	Governor Arm	1
2 - 5	56035-E-016	Drain Plug Bolt, M10x1.25x15	2
2 - 6	P54002	Washer	2
2 - 7	56035-E-018	Bearing, 6205	1
2 - 8	P54008	Oil Seal	1
2 - 9	P54003	Nut, M10	1
2 - 10	56035-E-020	Washer	1
2 - 11	56035-E-021	Pin	1
2 - 12	56035-E-022	Bolt, M6x14	2
2 - 13	56035-E-100	Oil Drain Tube	1
2 - 14	56035-E-101	Seal Guide	1

**Fig. 3 - Crankcase Cover Assembly**

No.	Part No.	Description	Qty.
3 - 1	56035-E-023	Crankcase Cover	1
3 - 2	56035-E-018	Bearing, 6205	1
3 - 3	P54008	Oil Seal	1
3 - 4	P54080	Crankcase Gasket	1
3 - 5	P54082	Pin	2
3 - 6	P54086	Oil Dipstick Subassembly	1
3 - 8	56035-E-029	Engine Oil Plug Subassembly	1
3 - 9	P54092	Bolt, M8x32	6

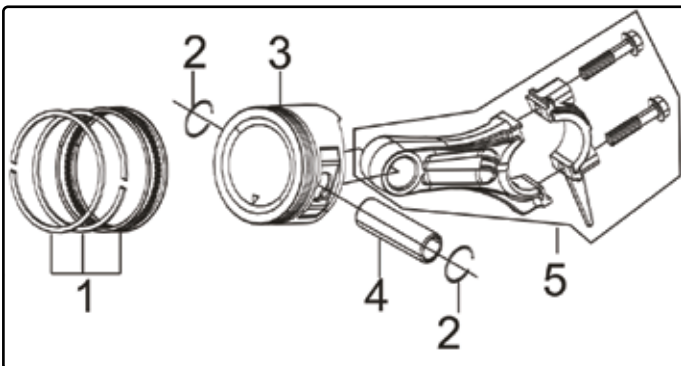


# EXPLODED VIEW & PARTS LIST



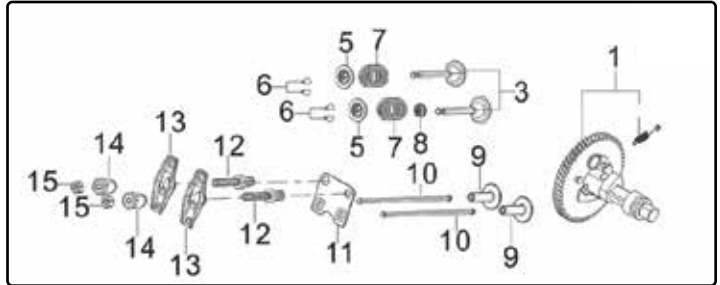
**Fig. 4 - Crankshaft**

No.	Part No.	Description	Qty.
4 - 1	56035-E-031	Crankshaft Assembly	1



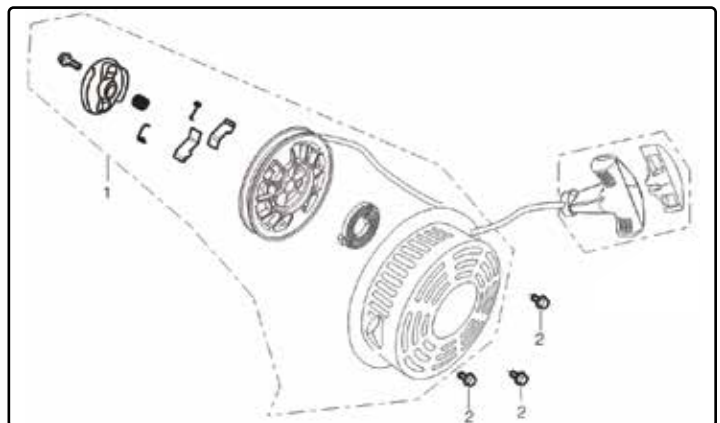
**Fig. 5. Piston Ring / Connecting Rod**

No.	Part No.	Description	Qty.
5 - 1	P54105	Piston Ring Assembly	1
5 - 2	P54106	Piston Ring Clip	2
5 - 3	P54109	Piston	1
5 - 4	P54112	Piston Pin	1
5 - 5	P54121	Connecting Rod	1



**Fig. 6 - Valve / Camshaft**

No.	Part No.	Description	Qty.
6 - 1	P54146	Camshaft Assembly	1
6 - 3	P54150	Valve	1
6 - 5	56035-E-043	Valve Spring Seat	2
6 - 6	P54160	Valve Lock Clamp	4
6 - 7	P54154	Valve Spring	2
6 - 8	P54161	Seal Guide	1
6 - 9	P54142	Valve Tappet	2
6 - 10	P54140	Valve Lifter	2
6 - 11	P54138	Stopper Plate Subassembly	1
6 - 12	P54134	Valve Adjusting Bolt, M6/M12 x 52	2
6 - 13	P54132	Valve Rocker	2
6 - 14	P54130	Valve Adjusting Nut, M6	2
6 - 15	P54128	Valve Lock Nut, M6	2

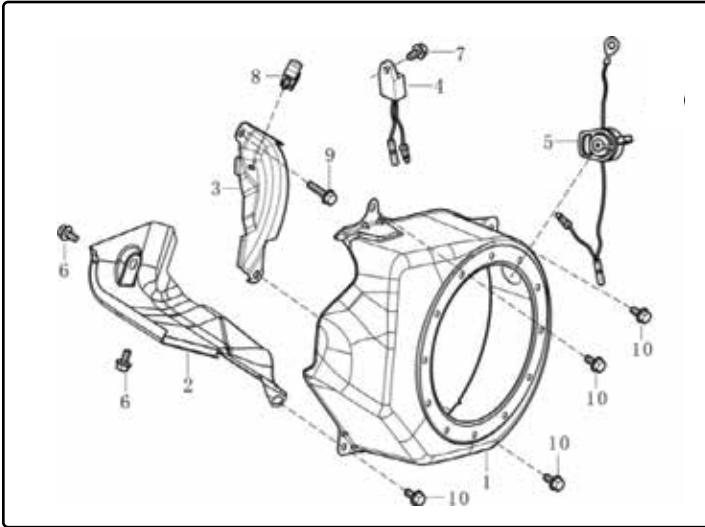


**Fig. 7 - Recoil Starter**

No.	Part No.	Description	Qty.
7 - 1	56035-E-054	Recoil Starter Assembly	1
7 - 2	P54598	Bolt, M6x8	3

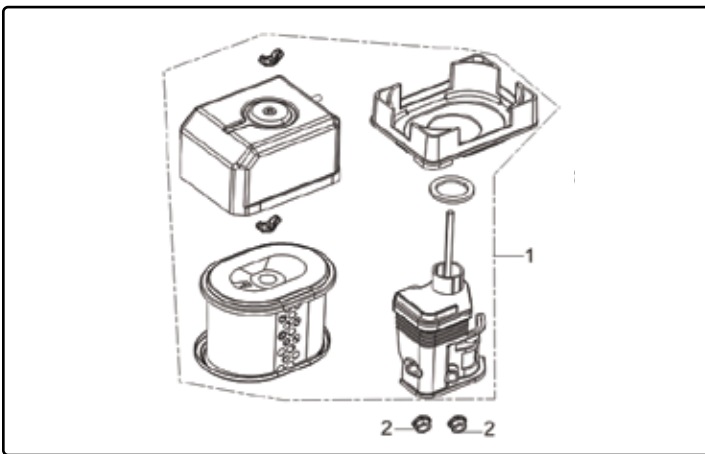


# EXPLODED VIEW & PARTS LIST



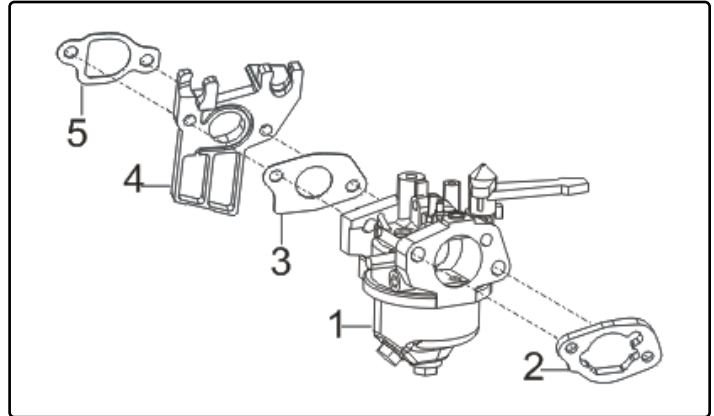
**Fig. 8 - Shroud**

No.	Part No.	Description	Qty.
8 - 1	P54668	Shroud	1
8 - 2	56035-E-058	Cylinder Body Shroud	1
8 - 3	56035-E-059	Lower Shield	1
8 - 4	P54612	Oil Protector	1
8 - 5	56035-E-061	Stop Engine Switch Subassembly	1
8 - 6	P54040	Bolt, M6x10	2
8 - 7	P54040	Bolt, M6x12	1
8 - 8	P54596-1	Collar	1
8 - 9	P54186	Bolt, M6x16	1
8 - 10	P54040	Bolt, M6x12	4



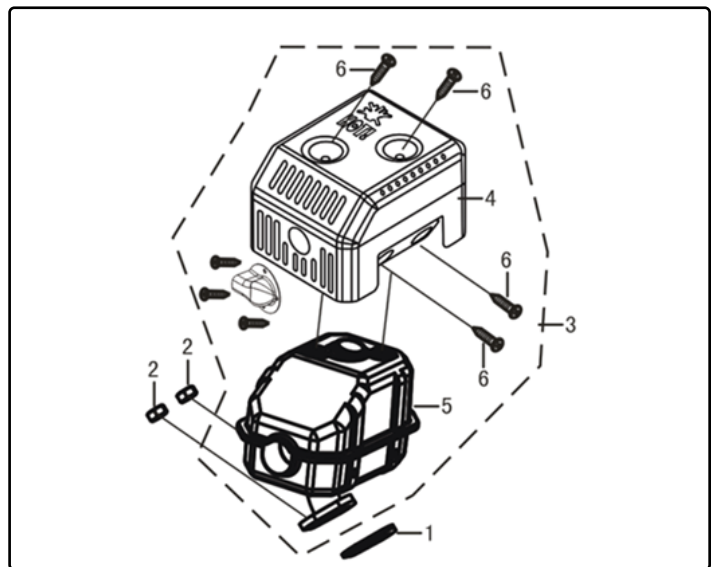
**Fig. 10 - Air Cleaner**

No.	Part No.	Description	Qty.
10 - 1	56035-E-073	Air Cleaner	1
10 - 2	P54179	Nut, M6	2
10 - 3	56035-E-073-1	Air Cleaner Element	1



**Fig. 9 - Carburetor Assembly**

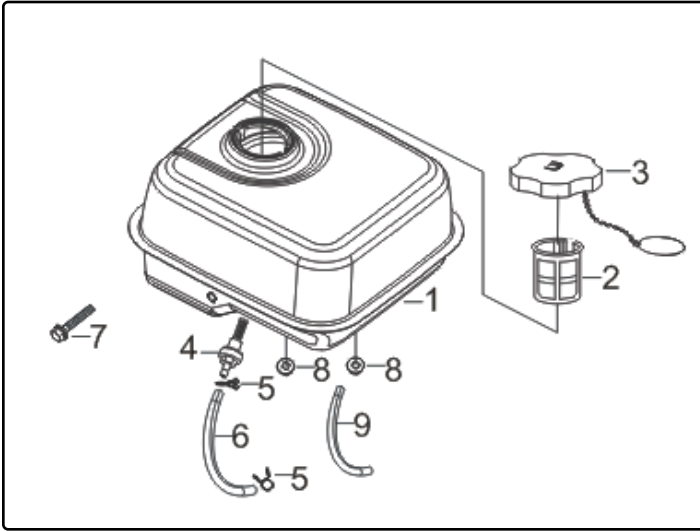
No.	Part No.	Description	Qty.
9 - 1	56035-E-067	Carburetor Assembly	1
9 - 2	56035-E-068	Air Cleaner Gasket	1
9 - 3	P54166	Carburetor Gasket	1
9 - 4	P54164	Carburetor Insulator Plate	1
9 - 5	P54162	Carburetor Insulator Gasket	1



**Fig. 11 - Muffler Assembly**

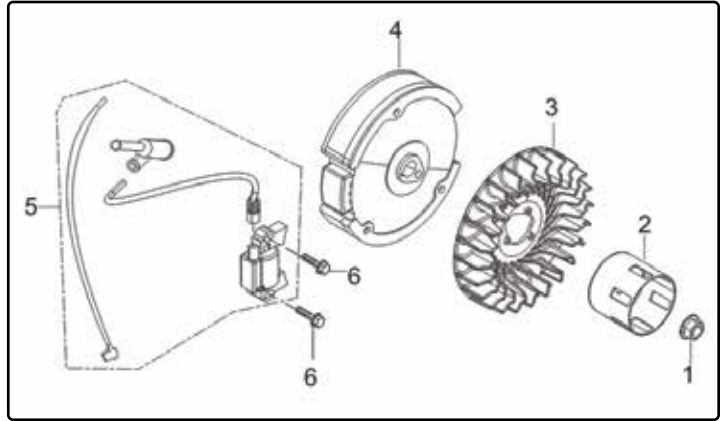
No.	Part No.	Description	Qty.
11 - 1	P54426	Exhaust Outlet Gasket	1
11 - 2	56035-E-076	Nut, M8	2
11 - 3	56035-E-077	Muffler Assembly	1

## EXPLODED VIEW & PARTS LIST



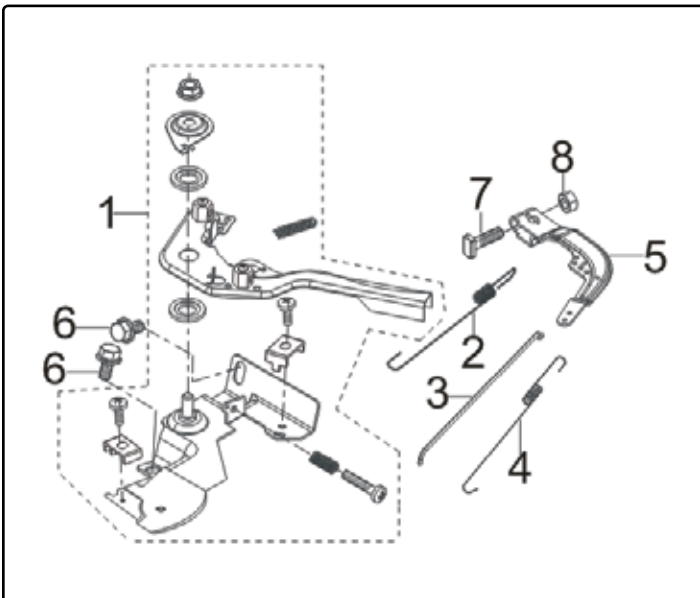
**Fig. 12 - Gas Tank**

No.	Part No.	Description	Qty.
12 - 1	56035-E-078	Fuel Tank	1
12 - 2	56035-E-079	Fuel Strainer	1
12 - 3	56035-E-080	Fuel Tank Cover	1
12 - 4	56035-E-081	Fuel Tank Oil Outlet Subassembly	1
12 - 5	56035-E-082	Collar	2
12 - 6	56035-E-083	Fuel Tube	1
12 - 7	56035-E-084	Bolt, M6x30	1
12 - 8	P54179	Nut, M6	2
12 - 9	56035-E-102	Rubber Jacket	1



**Fig. 13 - Flywheel / Impeller**

No.	Part No.	Description	Qty.
13 - 1	P54630	Flywheel Nut, M14x1.5	1
13 - 2	56035-E-087	Starter Pulley	1
13 - 3	P54634	Impeller	1
13 - 4	P54636	Flywheel Subassembly	1
13 - 5	56035-E-091	Ignition Coil	1
13 - 6	P54628	Bolt, M6x25	2



**Fig. 14 - Control Assembly, Throttle**

No.	Part No.	Description	Qty.
14 - 1	56035-E-092	Throttle Control Assembly	1
14 - 2	56035-E-094	Governor Spring	1
14 - 3	P54620	Governor Rod	1
14 - 4	P54618	Throttle Valve Returning Spring	1
14 - 5	P54624	Governor Support Subassembly	1
14 - 6	P54040	Bolt, M6x10	2
14 - 7	P54622	Governor Support Bolt, 35_6x1x21	1
14 - 8	P54179	Nut, M6	1

**NOTE:** Not all parts may be available for purchase. Parts and accessories that wear down over the course of normal use are not covered under the warranty.

# **WARRANTY STATEMENT**

WEN Products is committed to building tools that are dependable for years. Our warranties are consistent with this commitment and our dedication to quality.

## **LIMITED WARRANTY OF WEN PRODUCTS FOR HOME USE**

GREAT LAKES TECHNOLOGIES, LLC (“Seller”) warrants to the original purchaser only, that all WEN consumer power tools will be free from defects in material or workmanship during personal use for a period of two (2) years from date of purchase or 500 hours of use; whichever comes first. Ninety days for all WEN products if the tool is used for professional or commercial use. Purchaser has 30 days from the date of purchase to report missing or damaged parts.

**SELLER’S SOLE OBLIGATION AND YOUR EXCLUSIVE REMEDY** under this Limited Warranty and, to the extent permitted by law, any warranty or condition implied by law, shall be the replacement of parts, without charge, which are defective in material or workmanship and which have not been subjected to misuse, alteration, careless handling, misrepair, abuse, neglect, normal wear and tear, improper maintenance, improper storage, incorrect lubricants/fuels, or other conditions adversely affecting the Product or the component of the Product, whether by accident or intentionally, by persons other than Seller. To make a claim under this Limited Warranty, you must make sure to keep a copy of your proof of purchase that clearly defines the Date of Purchase (month and year) and the Place of Purchase. Place of Purchase must be a direct vendor of Great Lakes Technologies, LLC. Purchasing through third party vendors, including but not limited to garage sales, pawn shops, resale shops, or any other secondhand merchant, voids the warranty included with this product. Contact [techsupport@wenproducts.com](mailto:techsupport@wenproducts.com) or 1-847-429-9263 with the following information to make arrangements: your shipping address, phone number, serial number, required part numbers, and proof of purchase. Damaged or defective parts and products may need to be sent to WEN before the replacements can be shipped out.

Upon the confirmation of a WEN representative, your product may qualify for repairs and service work. When returning a product for warranty service, the shipping charges must be prepaid by the purchaser. The product must be shipped in its original container (or an equivalent), properly packed to withstand the hazards of shipment. The product must be fully insured with a copy of the proof of purchase enclosed. There must also be a description of the problem in order to help our repairs department diagnose and fix the issue. Repairs will be made and the product will be returned and shipped back to the purchaser at no charge for addresses within the contiguous United States.

THIS LIMITED WARRANTY DOES NOT APPLY TO ITEMS THAT WEAR OUT FROM REGULAR USAGE OVER TIME, INCLUDING FILTERS, SPARK PLUGS, VOLTAGE REGULATORS, BRUSHES, GASKETS, O-RINGS, WHEEL KITS, BATTERIES, RECOIL STARTERS, HIGH PRESSURE HOSES, SPRAY GUNS, ETC. ANY IMPLIED WARRANTIES SHALL BE LIMITED IN DURATION TO TWO (2) YEARS FROM DATE OF PURCHASE. SOME STATES IN THE U.S. AND SOME CANADIAN PROVINCES DO NOT ALLOW LIMITATIONS ON HOW LONG AN IMPLIED WARRANTY LASTS, SO THE ABOVE LIMITATION MAY NOT APPLY TO YOU.

IN NO EVENT SHALL SELLER BE LIABLE FOR ANY INCIDENTAL OR CONSEQUENTIAL DAMAGES (INCLUDING BUT NOT LIMITED TO LIABILITY FOR LOSS OF PROFITS) ARISING FROM THE SALE OR USE OF THIS PRODUCT. SOME STATES IN THE U.S. AND SOME CANADIAN PROVINCES DO NOT ALLOW THE EXCLUSION OR LIMITATION OF INCIDENTAL OR CONSEQUENTIAL DAMAGES, SO THE ABOVE LIMITATION OR EXCLUSION MAY NOT APPLY TO YOU.

THIS LIMITED WARRANTY GIVES YOU SPECIFIC LEGAL RIGHTS, AND YOU MAY ALSO HAVE OTHER RIGHTS WHICH VARY FROM STATE TO STATE IN THE U.S., PROVINCE TO PROVINCE IN CANADA AND FROM COUNTRY TO COUNTRY.

THIS LIMITED WARRANTY APPLIES ONLY TO ITEMS SOLD WITHIN THE UNITED STATES OF AMERICA, CANADA AND THE COMMONWEALTH OF PUERTO RICO. FOR WARRANTY COVERAGE WITHIN OTHER COUNTRIES, CONTACT THE WEN CUSTOMER SUPPORT LINE. FOR WARRANTY PARTS OR PRODUCTS REPAIRED UNDER WARRANTY SHIPPING TO ADDRESSES OUTSIDE OF THE CONTIGUOUS UNITED STATES, ADDITIONAL SHIPPING CHARGES MAY APPLY.

**THANKS FOR  
REMEMBERING**

