

This is a guide to replacing the PCB on your WEN 3410 3-Speed Remote-Controlled Air Filtration System. This guide is best used in conjunction with the 3410 manual, included as a physical copy with your unit and available on the WEN website page for the 3410 (link [here](#)), under the Downloads tab.

If at any point you need assistance, have questions, or want to order parts, call WEN customer service at 1-800-232-1195, M-F, 8-5 Central Time, or email techsupport@wenproducts.com.

Table of contents

- Disassembling the unit.....1
- Choosing the correct PCB.....1
- Replacing the PCB.....2

Disassembling the unit

You will need:



- A Phillips-head screwdriver
- Cutting pliers (diagonal-cutting or flush-cutting)
- Needle-nose pliers, adjustable pliers, or a ratcheting socket wrench and sockets

You may want:

- A heat gun. We recommend the WEN 2020 1500W Dual-Temperature Heat Gun Kit, available for purchase online.

Choosing the correct PCB

- Refer to the Parts List and exploded view in the back of your manual for the correct part number for your PCB and remote control. However, if the manual is not available, or you are unsure, refer to Table 1 below. **Refer to the remote ORIGINALLY included with your unit.**
- **NOTE:** this guide is written with newer 3410 units in mind. Steps may be similar for older units, but may not necessarily be identical. Call 1-800-232-1195 with questions.

IF YOUR REMOTE LOOKS LIKE THIS...	CHOOSE THESE PART NUMBERS
 <p data-bbox="253 1535 708 1566">Remote with bumps on the bottom.</p>	<ul style="list-style-type: none"> • Remote part number: 90243-029 • PCB part number: 90243-046 • Control system: infrared
 <p data-bbox="298 1896 662 1927">White remote with black top</p>	<ul style="list-style-type: none"> • Remote part number: 3410T-AS03 • PCB part number: 3410T-045 • Control system: radio frequency



Black remote with RF logo in the bottom left corner of button area

- Remote part number: 3410-029RF
- PCB part number: 3410-046RF
- Control system: radio frequency

NOTE: The remote and PCB can be replaced with parts 3410-029RF-01 (remote) and 3410-046RF-01 (PCB) in a set. **Remote 3410-029RF will not work with PCB 3410-046RF-01, and remote 3410-029RF-01 will not work with PCB 3410-046RF.** Call 1-800-232-1195 with questions.



Black remote, square edges, with part number in bottom left corner of button area

- Remote part number: 3410-029RF-01
- PCB part number: 3410-046RF-01
- Control system: radio frequency

NOTE: if you are having problems with your unit turning itself on and off seemingly at random, select this PCB/remote combination.

Table 1. Choosing remote and PCB. If you are uncertain about which remote and PCB combination you need, call 1-800-232-1195 M – F 8a-5p CST, or email techsupport@wenproducts.com.

Replacing the PCB

1. Remove the power cord and plug from any and all power sources. **AVOID ELECTRIC SHOCK. FOLLOW ALL APPLICABLE SAFETY PROCEDURES LISTED IN YOUR OWNER'S MANUAL.**
2. Stand the unit on its back end, as shown in Figure 1 below.



Figure 1: The unit is stood on its back end.

3. Using the Phillips head screwdriver, remove the ten screws found around the perimeter of the front panel, as indicated by the red arrows in Figure 2 below.

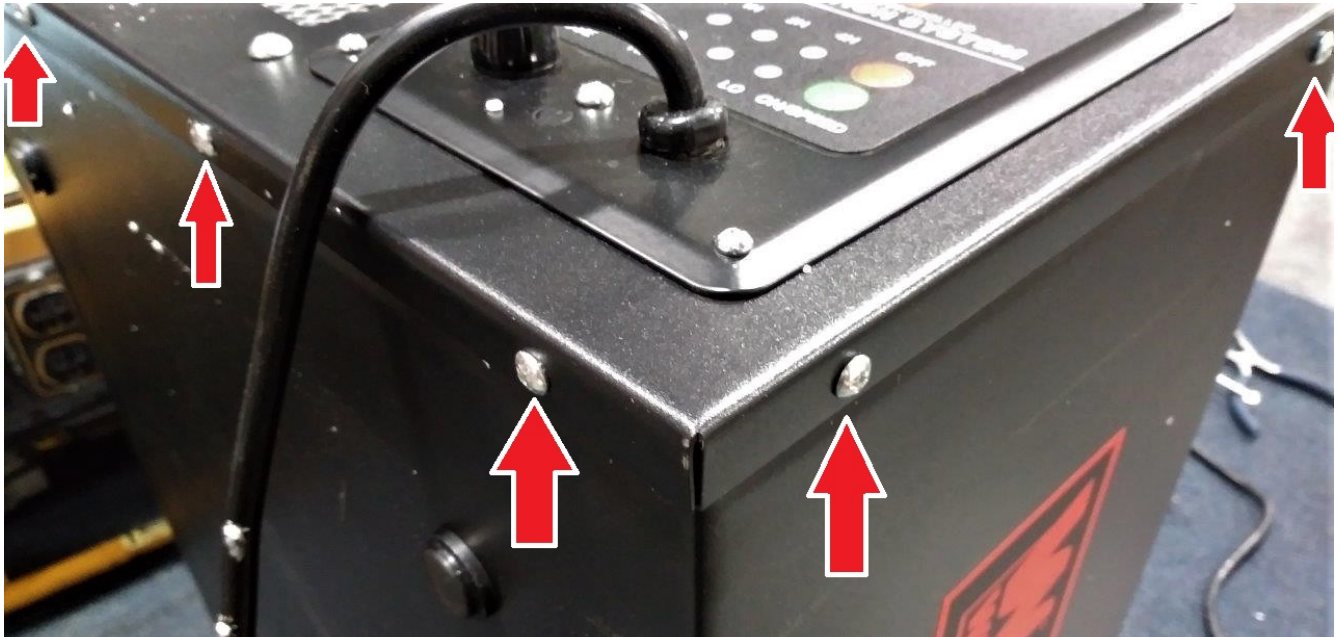


Figure 2: Remove these ten screws.

4. Set the screws aside. Look on the top of the unit near the handle. Notice the grounding bolt shown in Figures 3 and 4 below.

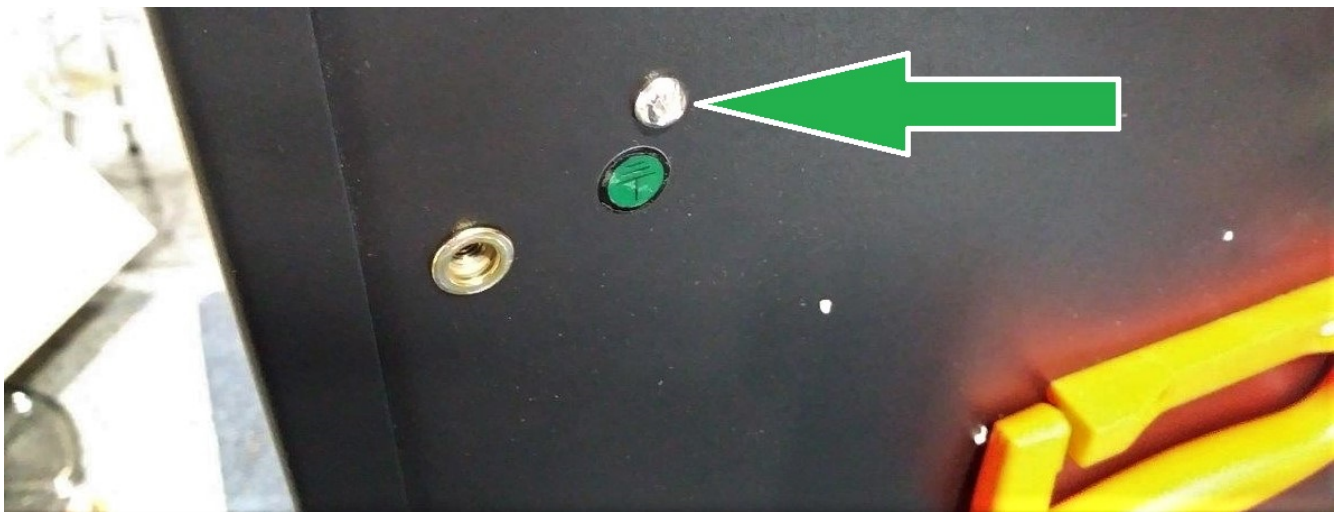


Figure 3: Grounding bolt, indicated by green arrow.

Gently lift the front panel up and slide it towards the bottom of the unit. This exposes the inside of the grounding bolt, shown in Figure 4 below.

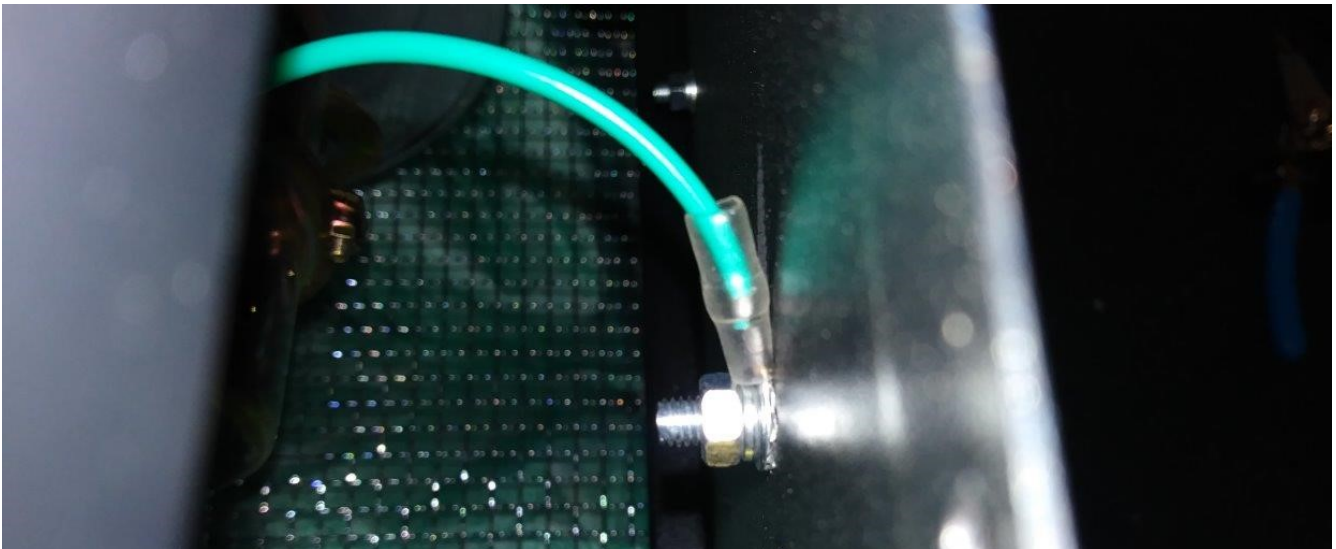


Figure 4: Inside of grounding bolt.

5. Using the Phillips-head screwdriver, as well as something to hold the nut shown in Figure 4 above (pliers, socket, adjustable wrench, etc.), loosen and remove the nut, then remove the grounding wire and bolt. Do not drop the washers. If you do drop them, retrieve them from the grating, or turn the unit over. If need be, remove the inner and outer filter. This will let you retrieve the washers from the bottom.

6. Set the front panel assembly face-down on the work surface, making sure the power cord is not bent where it meets the front panel. Let it hang off the work surface.

7. Check the wiring connections to the PCB, as shown in Figure 5 below. If they do not match what is shown in Figure 5 below, correct them.



Figure 5: Wired connections to PCB. From left to right: blue, black, red, and white go in slots 1, 3, 5, and 7 (respectively) of the 4-wire connector shown on the left. The black and white wires go in slots 1 and 3 (respectively) of the 2-wire connector shown on the right.

8. Push the tabs on the 4-wire and 2-wire connectors to release them from their sockets on the PCB. Move them out of the way.

9. Flip the unit over so that the front control panel is accessible. You may want to prepare a heat gun (without any nozzles or other attachments) for use on this step. We recommend the WEN 2020 1500W Dual-Temperature Heat Gun Kit, available for purchase online. On the lowest heat setting, evenly warm the adhesive sticker on the front panel, outlined in yellow in Figure 6 below. **CAUTION: HEAT GUNS ARE HOT. Observe all safety precautions listed in your heat gun's owner's manual. Do not allow the heat gun's nozzle or body to come into contact with your skin or any portion of your 3410 air filtration system.**



Figure 6: Remove the adhesive sticker outlined in yellow.

This exposes the underside of the panel. Using the Phillips-head screwdriver, remove the two screws indicated by red arrows in Figure 7 below.

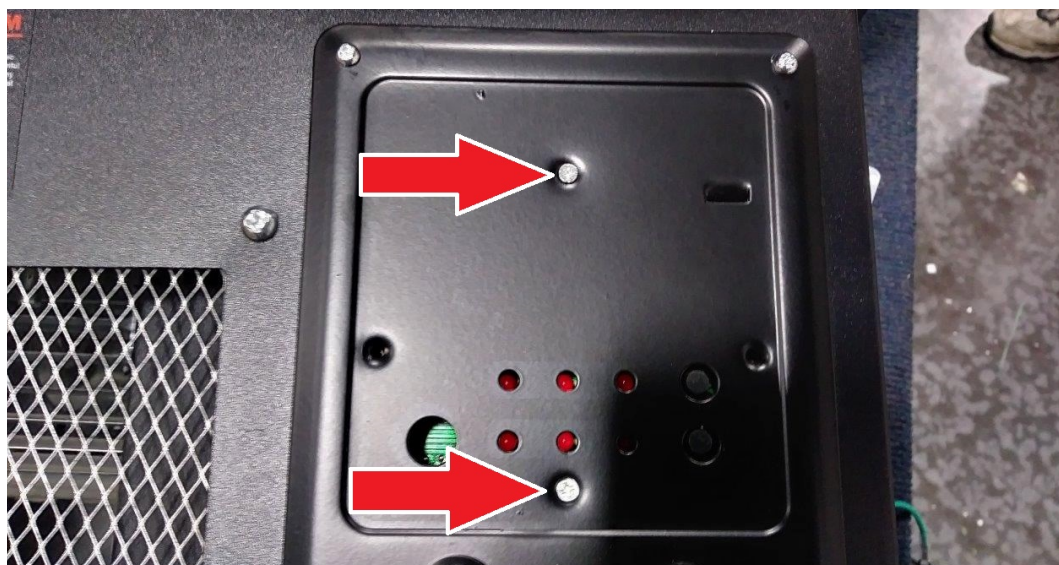


Figure 7: Remove these screws.

10. Remove the PCB and housing from the rear of the control panel. Refer to Figures 8 and 9 below. Using the cutting pliers, **carefully** cut only the zip tie that secures the radio antenna to the housing.

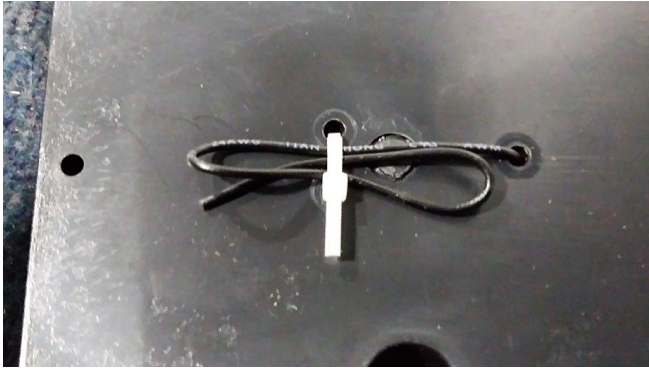


Figure 8: Cut the zip tie.



Figure 9: Zip tie has been cut.

11. Flip the housing over. Using the Phillips head screw, remove the two screws indicated by yellow arrows in Figure 10 below. Lift out the PCB.



Figure 10: Remove these two screws.

12. Replace the old PCB with the new PCB. If applicable, make sure the radio antenna goes through the hole in the back of the housing. You may choose to secure it with a zip tie if desired, but this is not required.

13. Re-assemble the unit by following the above steps in reverse order. Press the label that was removed in step 9 back into its original location. When re-assembling the grounding wire and grounding bolt (refer to steps 4 & 5, Figures 3 & 4), assemble it in the order shown in Figure 11 below (from left: nut, locking washer, flat washer, grounding wire, serrated washer, housing, bolt).

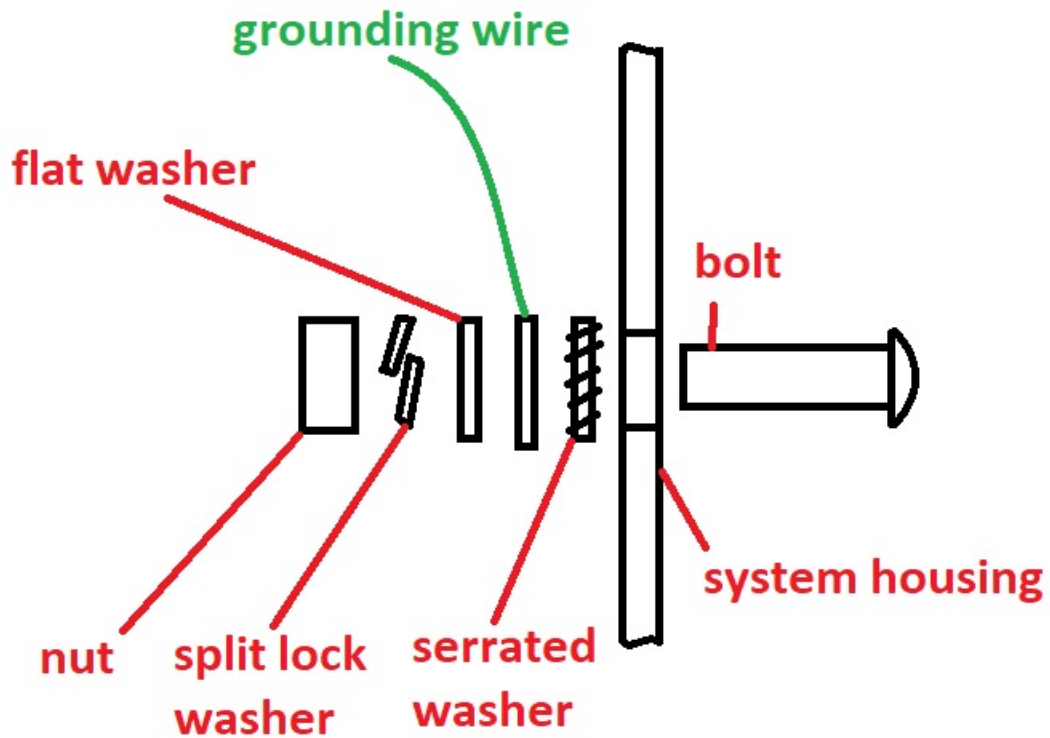


Figure 11: Assemble grounding bolt as shown here.

QUESTIONS? CONCERNS?

CALL OUR CUSTOMER SERVICE HOTLINE AT 1-800-232-1195, M – F, 8 – 5
CENTRAL TIME, OR EMAIL TECHSUPPORT@WENPRODUCTS.COM.