



This is a guide to replacing the vibrating assembly for your WEN 56035, 56035T, or 56035M plate compactor. This guide is best used in conjunction with the compactor's manual, included as a physical copy with your unit and available on the WEN website page for the plate compactor ([link here](#)), by clicking "Click here to view the product manual".

If at any point you need assistance, have questions, or want to order parts, call WEN customer service at 1-800-232-1195, M-F, 8-5 Central Time, or email techsupport@wenproducts.com.

If replacing any parts, use only genuine replacement parts purchased from WEN Products. Use of replacement parts not sold by WEN Products will void your warranty and could lead to decreased performance or injury.

TABLE OF CONTENTS

Tools needed	1
Removing the old vibrating assembly	1
Reassembly	5

TOOLS NEEDED

- 13, 17, 18, 19, 27mm sockets and ratchet
 - *Alternative: combination or adjustable wrench(es)*
- Impact wrench or breaker bar
- Large screwdriver (flat-head or Phillips)
- Torque wrench and appropriate sockets
- Reversible anaerobic threadlocker (e.g. blue Loctite ®)

ENSURE THAT THE ENGINE IS COOL BEFORE BEGINNING ANY MAINTENANCE OR REPAIR WORK. FOLLOW ALL SAFETY PROCEDURES LISTED IN YOUR OWNER'S MANUAL. USE COMMON SENSE. AVOID INJURY.

REMOVING THE OLD VIBRATING ASSEMBLY

1. Make sure the engine is shut down and fully cooled. Drain the engine oil and gasoline according to the instructions in your owner's manual.
2. Use a 13mm socket and ratchet (or combination wrenches) to remove the mounting bolts on both sides of the belt cover (Figs. 1 & 2).

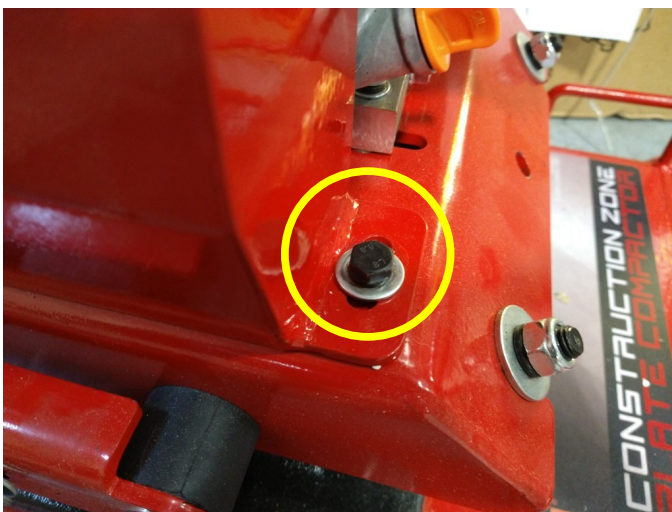


Fig. 1: Mounting bolt 1.



Fig. 2: Mounting bolt 2.

3. Remove the belt cover. The clutch and belt are now exposed (Fig. 3).

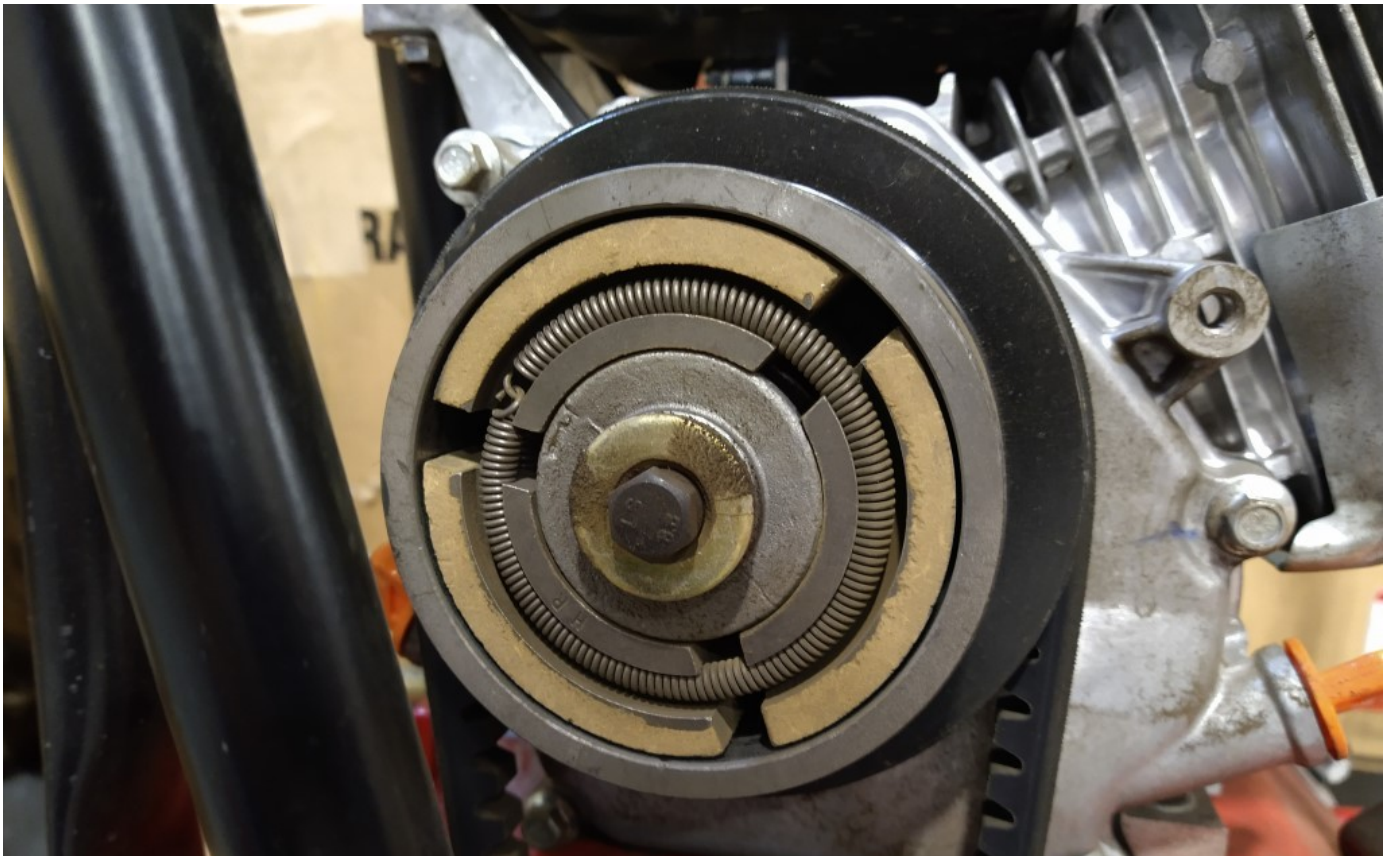


Fig. 3: Clutch and belt.

4. With the screwdriver shaft positioned on the outside of the clutch, position the tip under the belt, and lever the belt off the clutch while turning the clutch counterclockwise (Figs. 4 & 5).

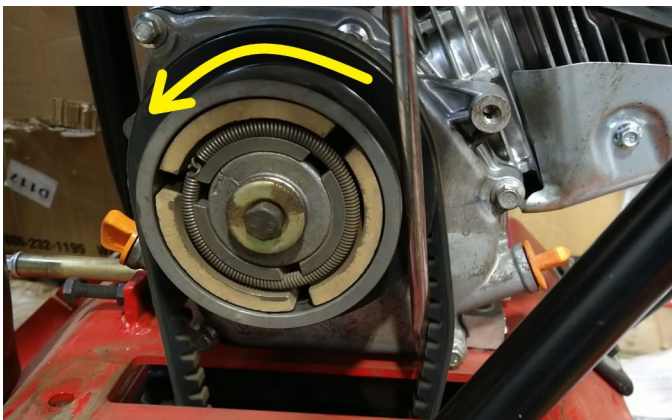


Fig. 4: Removing the belt (1).

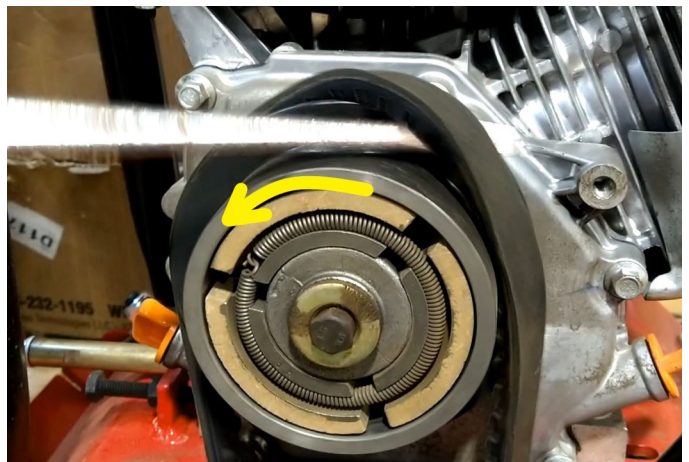


Fig. 5: Removing the belt (2).

5. The belt can now be removed from the lower, vibrating assembly pulley (within the plate).
6. Remove the 4 nuts and washers from both sides of the engine support plate (Fig. 6).

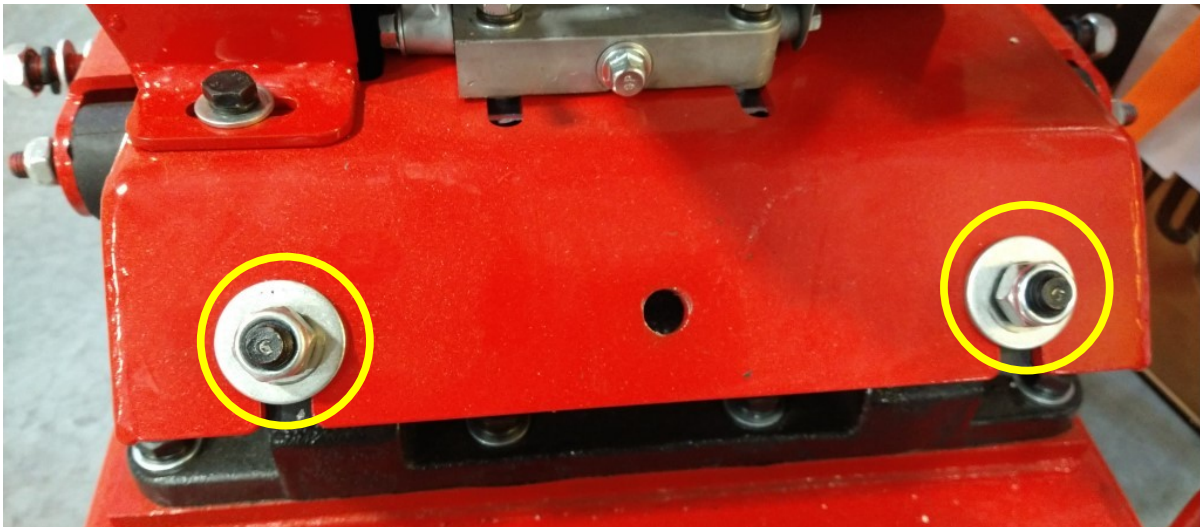


Fig. 6: Remove these nuts and washers (2 each side).

7. Gently lift the handles, engine assembly, and support plate off the shock absorbers, and carefully set the assembly to the side.
8. Remove the 8 mounting bolts from the exciter seat (Fig. 7), then remove the exciter seat and vibrating assembly from the bottom plate. You may need an impact wrench or breaker bar to remove the bolts.

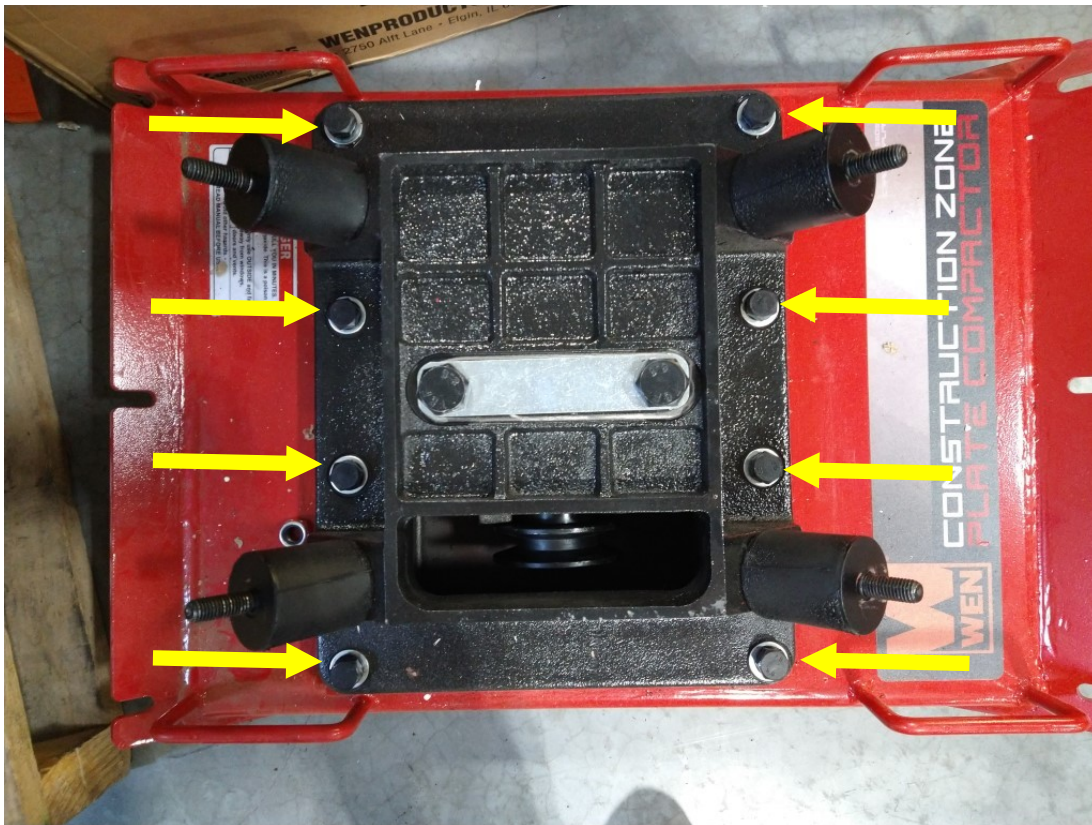


Fig. 7: Remove the 8 mounting bolts, then gently remove the exciter seat and vibrating assembly from the bottom plate.

9. Use the 27mm socket and adjustable or combination wrench to remove the two mounting bolts and nuts from the vibrating assembly (Figs. 8 & 9). You may need a breaker bar or impact wrench to remove the nuts and bolts.

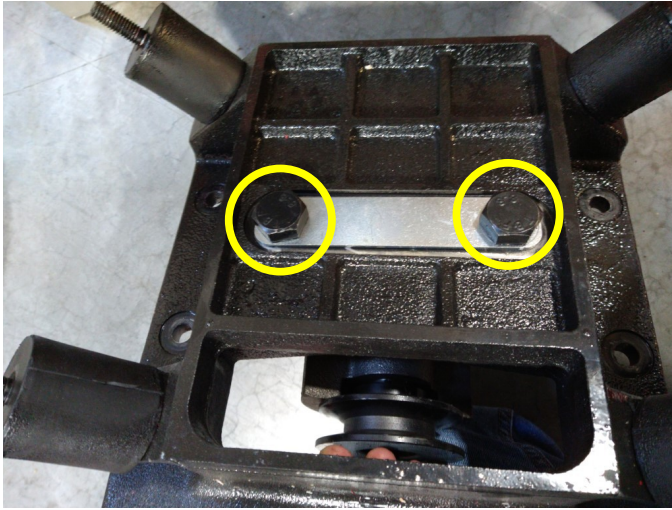


Fig. 8: Remove these bolts (top of assembly).

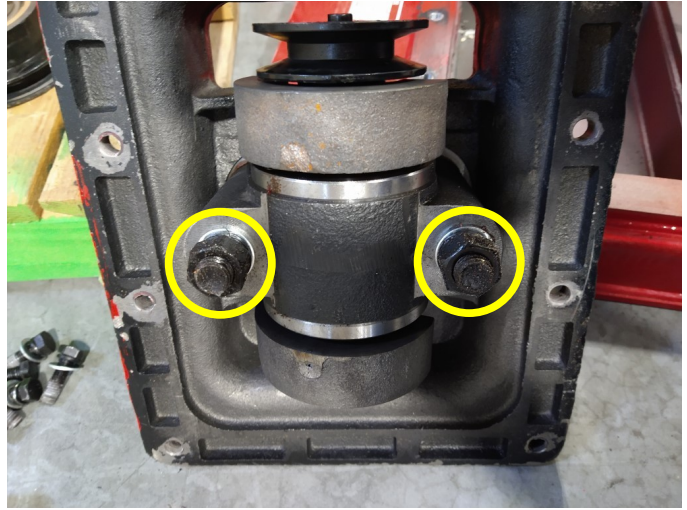


Fig. 9: Remove these nuts (bottom of assembly).

10. Remove the old vibrating assembly from the exciter seat (Fig. 10).

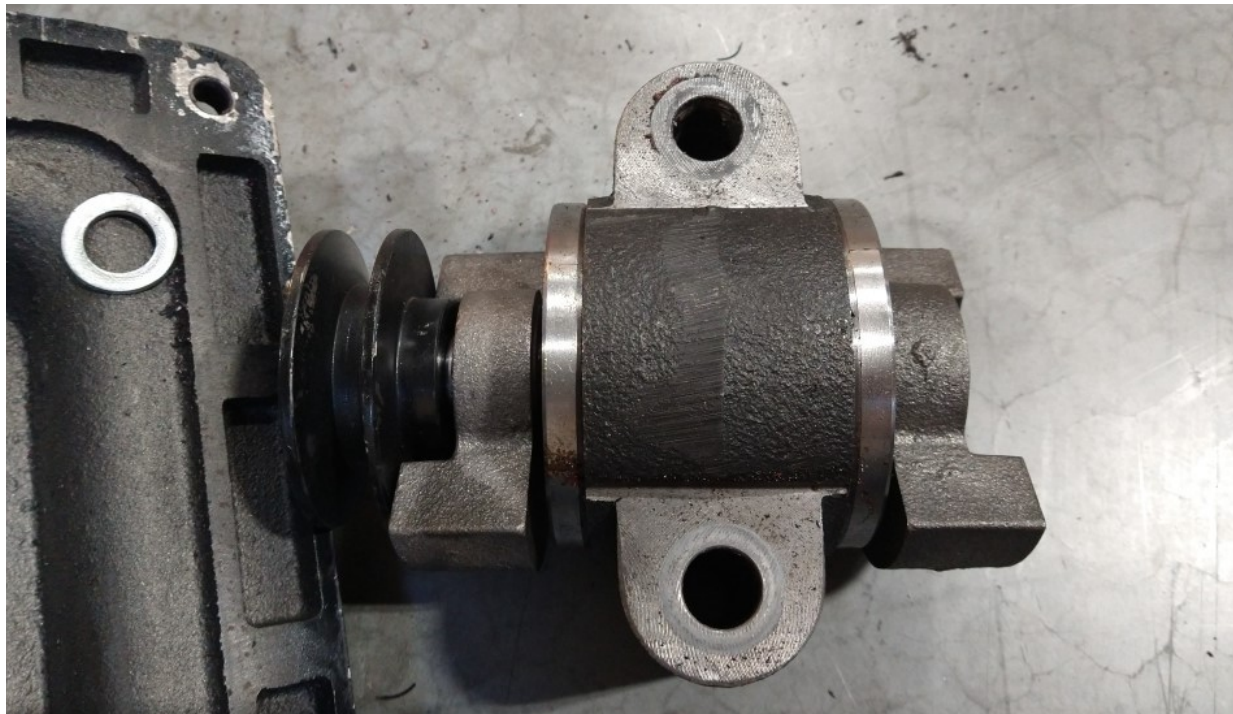


Fig. 10: Vibrating assembly removed.

REASSEMBLY

11. Position the new vibrating assembly on the exciter seat. When reinstalling the mounting nuts and bolts, apply some reversible anaerobic threadlocker (e.g. blue Loctite ®) to the bolt threads, and use the torque wrench to tighten the nuts to **147.5 ft-lbs (200 Nm)**.
12. Reinstall the exciter seat and vibrating assembly on the bottom plate. When reinstalling the mounting bolts, apply some threadlocker to the bolt threads, and use the torque wrench to tighten the nuts to **60.5 ft-lbs (82 Nm)**.
13. Reposition the engine assembly and support plate on the shock absorbers. Thread the belt through the slot in the support plate. Tip the engine assembly up and install the belt on the clutch pulley (see Fig. 4). Tip the assembly down and use a socket or wrench to tighten the lock nuts removed in step 6.
 1. TIP: if you're having trouble using this technique, use the screwdriver technique (step 4.) to work the belt back onto the pulley.
14. Replace the belt cover and mounting bolts. When reinstalling the mounting bolts, apply some threadlocker to the bolt threads, and use the torque wrench to tighten the bolts to **20.6 ft-lbs (28 Nm)**.
15. Reinstall the handles and all mounting nuts and bolts. Use a socket or wrench to tighten them.
16. Make sure all fasteners are fully tightened. Start your plate compactor according to the instructions in your manual.

QUESTIONS? PROBLEMS?

Contact WEN Customer Service at 1-847-429-9263, M-F, 8-5 CST, or email
techsupport@wenproducts.com