



This is a guide to replacing the belt or clutch for your WEN 56035, 56035T, or 56035M plate compactor. This guide is best used in conjunction with the compactor's manual, included as a physical copy with your unit and available on the WEN website page for the plate compactor ([link here](#)), by clicking "Click here to view the product manual".

If at any point you need assistance, have questions, or want to order parts, call WEN customer service at 1-800-232-1195, M-F, 8-5 Central Time, or email [techsupport@wenproducts.com](mailto:techsupport@wenproducts.com).

**If replacing any parts, use only genuine replacement parts purchased from WEN Products. Use of replacement parts not sold by WEN Products will void your warranty and could lead to decreased performance or injury.**

### TABLE OF CONTENTS

Tools needed	1
Removing the belt	1
Removing the clutch	2
Installing the new clutch	3
Installing the belt	4

### TOOLS NEEDED

- 13mm socket and ratchet
  - *Alternative: combination or adjustable wrench*
- Large screwdriver (flat-head or Phillips)
- Torque wrench and 13mm socket
- Reversible anaerobic threadlocker (e.g. blue Loctite ®)

ENSURE THAT THE ENGINE IS COOL BEFORE BEGINNING ANY MAINTENANCE OR REPAIR WORK. FOLLOW ALL SAFETY PROCEDURES LISTED IN YOUR OWNER'S MANUAL. USE COMMON SENSE. AVOID INJURY.

### REMOVING THE BELT

1. Make sure the engine is shut down and fully cooled. Swing the handle out of the way.
2. Use a 13mm socket and ratchet (or combination wrenches) to remove the mounting bolts on both sides of the belt cover (Figs. 1 & 2).

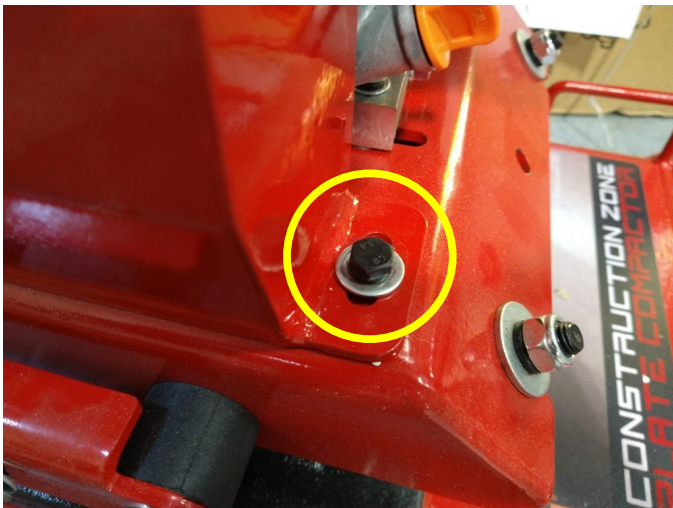


Fig. 1: Mounting bolt 1.

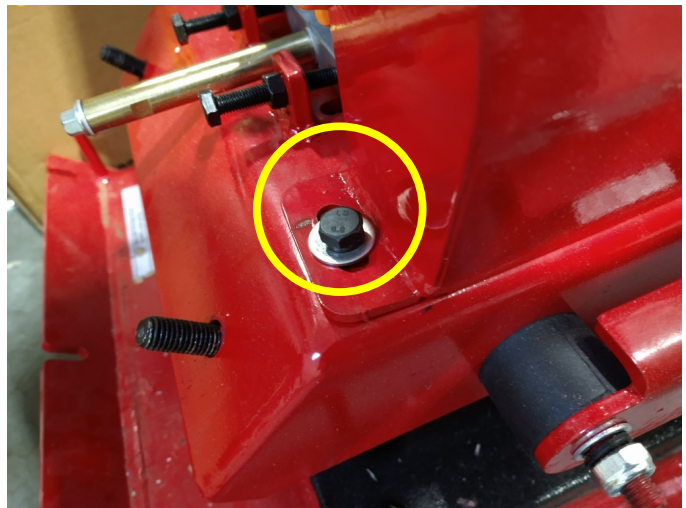
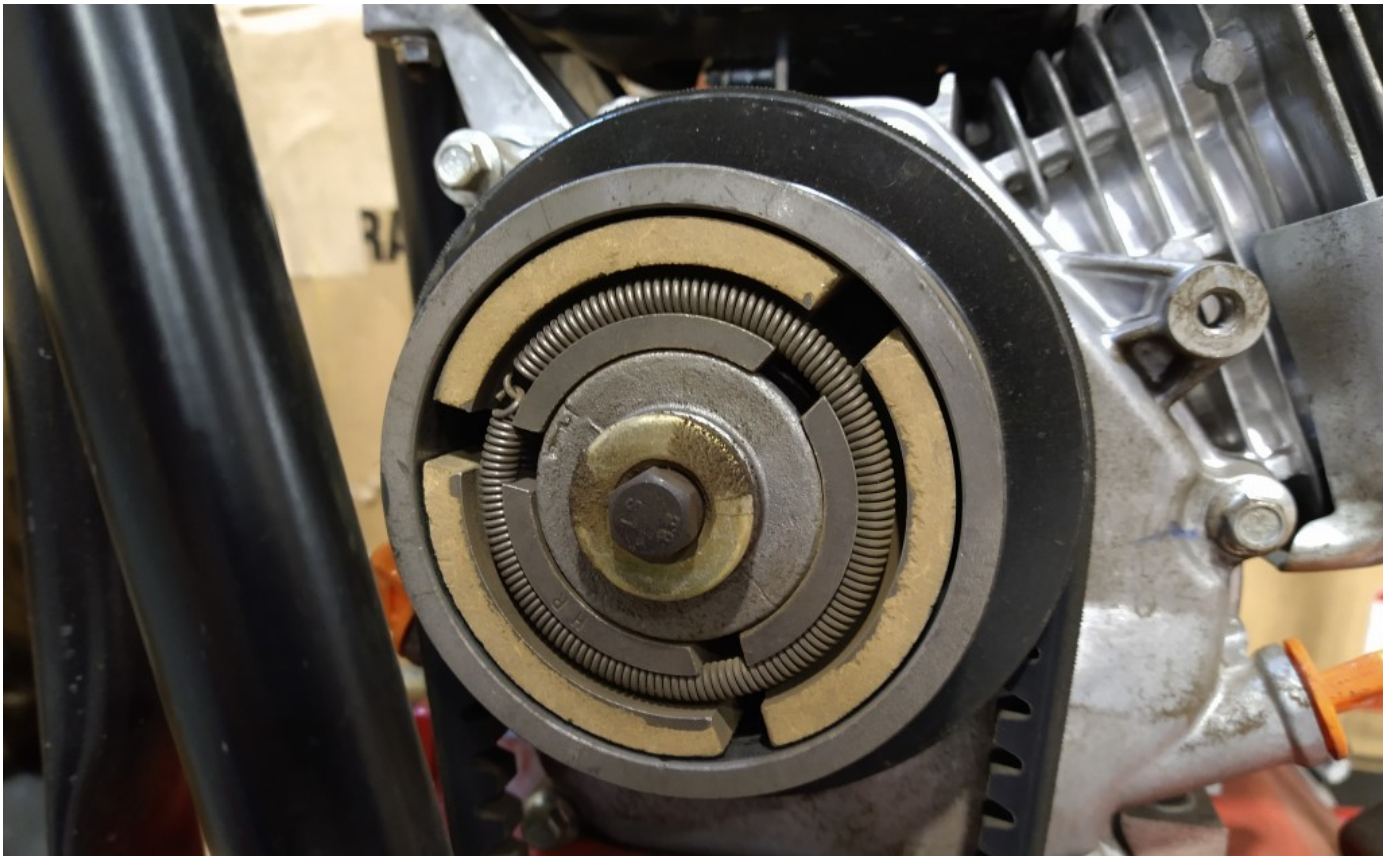


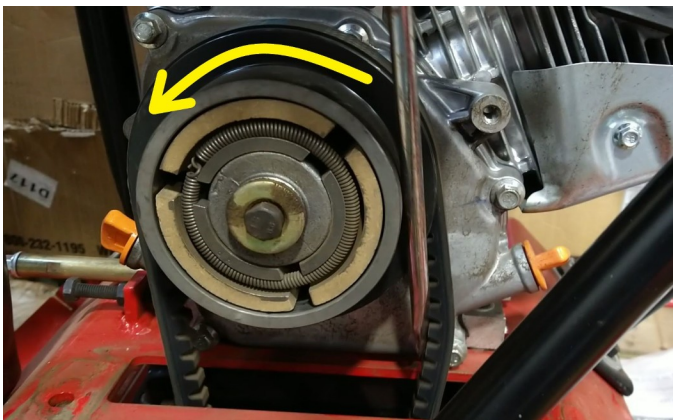
Fig. 2: Mounting bolt 2.

3. Remove the belt cover. The clutch and belt are now exposed (Fig. 3).

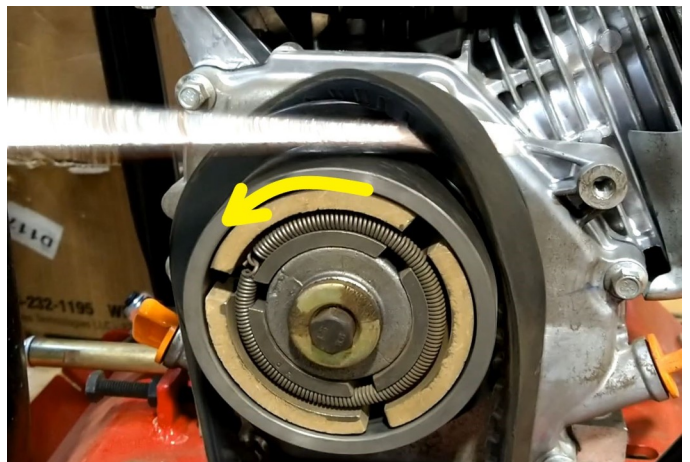


*Fig. 3: Clutch and belt.*

4. With the screwdriver shaft positioned on the outside of the clutch, position the tip under the belt, and lever the belt off the clutch while turning the clutch counterclockwise (Figs. 4 & 5).



*Fig. 4: Removing the belt (1).*



*Fig. 5: Removing the belt (2).*

5. The belt can now be removed from the lower, vibrating assembly pulley (within the plate) for replacement. To replace the belt, skip to section "Installing the belt" on p. 4 below.

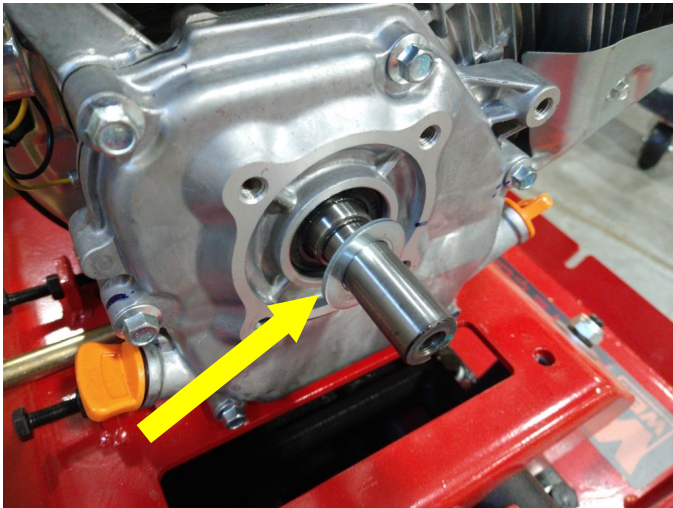
### **REMOVING THE CLUTCH**

6. Use a 13mm socket and ratchet (or combination wrenches) to remove the clutch mounting bolt (Fig. 6) – it is a standard right-hand-threaded bolt.



*Fig. 6: Remove the clutch mounting bolt.*

7. Gently slide the clutch off the engine's crankshaft. Be careful not to lose the washer (Fig. 7) or shaft key (Fig. 8).



*Fig. 7: Washer.*



*Fig. 8: Shaft key.*

## **INSTALLING THE NEW CLUTCH**

8. Install the new clutch in the same orientation as the old one. Make sure the washer is installed between the clutch and the crankshaft shoulder (see Fig. 7 for reference), and that the shaft key (see Fig. 8 for reference) is installed.
9. Apply some reversible anaerobic threadlocker (e.g. blue Loctite ®) to the clutch mounting bolt's threads. Install the bolt. Tighten it using the torque wrench to 20.6 ft-lbs (28 Nm) (see Fig. 6 for reference).

## **INSTALLING THE BELT**

10. Place the belt onto the vibrating assembly pulley (within the bottom plate).
11. Use the screwdriver as you did before to work the new belt back onto the clutch pulley (see Fig. 3 for reference).
12. Replace the belt cover. Apply some reversible anaerobic threadlocker (e.g. blue Loctite ®) to the belt cover mounting bolts' threads. Tighten them using the torque wrench to 20.6 ft-lbs (28 Nm) (see Figs. 1 & 2 for reference).

## **QUESTIONS? PROBLEMS?**

Contact WEN Customer Service at 1-847-429-9263, M-F, 8-5 CST, or email [techsupport@wenproducts.com](mailto:techsupport@wenproducts.com)