



THE CLEAR CUT
Rental Catalogue

Click [Here](#) to Access Our
Rental Request Form

THE CLEAR CUT

Rentals

The process is simple...

1. Explore our stunning bridal rental catalog and choose the style(s) you want through this [form](#).
2. Reserve your rental dates by reaching out to your personal gemologist.
3. Enjoy Clear Cut's exceptionally crafted pieces delivered right to your door.
4. Return your pieces with a pre-paid shipping label.



THE CLEAR CUT

Rentals

FAQs

- **How long can I keep my Clear Cut collection piece(s)?**
 - Because each collection piece is in high demand we typically offer 3-5 day rentals. If you are looking for a longer rental our stylists are happy to assist and customize your rental agreement to better suit your schedule.
- **Who can rent from The Clear Cut?**
 - As of now, all of our engagement ring and wedding band clients are invited to join our rental program.
- **I love my rental! How can I purchase it?**
 - All of our rental pieces are available for purchase. If you'd like to inquire about a product please email us here.
- **Is the rental program subscription based?**
 - No subscription is needed! Only pay for what you rent for or what you decide to purchase.
- **Where do you ship?**
 - We are currently servicing clients within the US. We hope to expand internationally soon!
- **I lost my return label. How do I get a new one?**
 - If you need a new return label, you can email us here and request a new one.
- **How do I return the items I'm borrowing?**
 - We've included a return shipping label and instructions with your Clear Cut rental. Please follow the below instructions when sending the items back to The Clear Cut.
 - Please place it in the box it came in or a Ziploc bag.
 - then place it in a small stuffed box.
 - Finally, place that box in a medium sized FedEx box fully sealed on all sides.

A close-up photograph of a person's ear. The person has long, straight, blonde hair. They are wearing two diamond hoop earrings. The earrings are made of a metal with a continuous line of small, clear diamonds set into the hoop. The background is a soft, out-of-focus light blue.

Earrings



Rental Fee: \$100

Diamond Cluster Studs

Featuring natural G-H color, SI clarity diamonds, 0.93ctw



Rental Fee: \$110 - \$310

Classic Diamond Studs

Featuring natural I-J color, SI clarity round diamonds,
0.50ctw - 1.80ctw



Rental Fee: \$110

Bezel Studs

Featuring natural I-J color, SI clarity round diamonds,
0.50ctw



Rental Fee: \$100

Inside Out Diamond Hoops

Featuring natural G-H color, SI clarity round diamonds,
1.44ctw



Rental Fee: \$50 - \$125

Super Skinny Pave Hoops

Featuring natural G-H color, SI clarity diamonds,
0.20ctw - 0.83ctw



Rental Fee: \$65

Diamond Halo Studs

Featuring natural G-H color, SI clarity round diamonds,
0.20ct center, 0.56ctw



Rental Fee: \$100

Athena Drop Earrings

Featuring natural G-H color, SI clarity diamonds, 0.45ctw



Rental Fee: \$85

Marquise Diamond Studs

Featuring natural G-H color, SI clarity marquise diamonds,
0.80ctw



Rental Fee: \$50

Downtown Diamond Drop

Featuring natural G-H color, SI clarity 0.05ct round diamonds, 0.15ct each baguette, 0.40ctw



Rental Fee: \$50

Athena Studs

Featuring three natural G-H color, SI clarity marquise diamonds, 0.45ctw



Rental Fee: \$50

Alter Ego Earrings

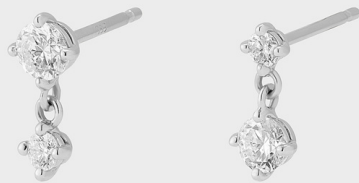
Featuring natural G-H color, SI clarity 0.10ct round and 0.12ct marquise diamonds, 0.44ctw



Rental Fee: \$95

Wanderlust Studs

Featuring natural G-H color, SI clarity round diamonds, 0.66ctw



Rental Fee: \$95

Opposites Attract Diamond Drops

Featuring natural I color, SI clarity 0.25ct and 0.07ct diamonds, 0.64ctw



Rental Fee: \$50

Madison Chain Hoop

25mm diameter, 5mm width



Rental Fee: \$50

Chelsea Chain Studs

Featuring bezel-set natural G-H color, SI clarity round diamonds, 0.10ctw



Rental Fee: \$50

Cuffing Season Stud

Featuring natural G-H color, SI clarity round pave diamonds and a bezel set round diamond, 0.17ctw



Necklaces



Rental Fee: \$205

Defined Diamond Tennis Necklace

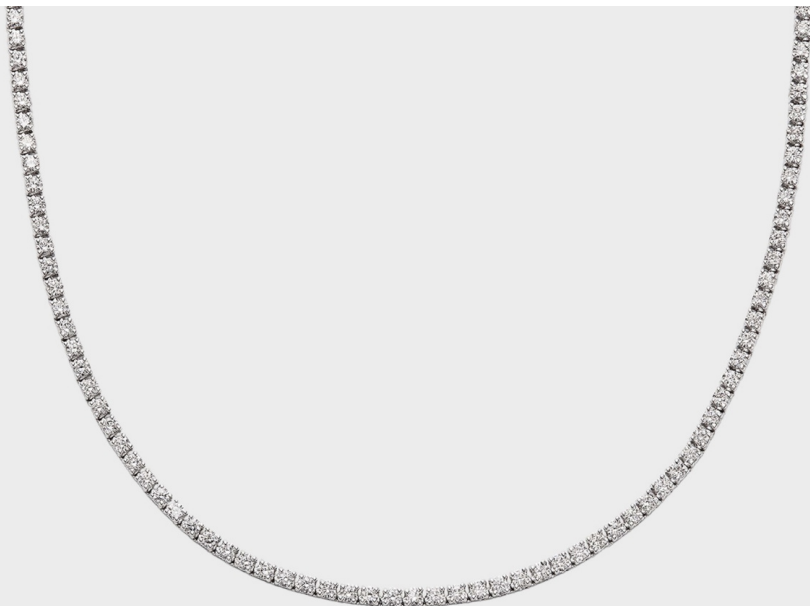
Featuring natural G-H color, VS/SI clarity diamonds, 0.03ct each, 3.06ctw



Rental Fee: \$350

Diamond Riviera Necklace

Featuring natural G-H color, SI clarity diamonds, 0.02ct - 0.25ct each, 4.36ctw



Rental Fee: \$165 - \$315

Diamond Tennis Necklace

Featuring natural G-H color, SI clarity diamonds, 0.03ct each, 3.81ctw



Rental Fee: \$215

Bezel Set Diamond Tennis Necklace

- Featuring natural G-H color, SI clarity round diamonds, 0.03ct each = 2.58ctw



Rental Fee: \$90

Wanderlust Necklace

Featuring natural G-H color, SI clarity diamonds, 0.46ctw



Rental Fee: \$60

Diamond Station Necklace

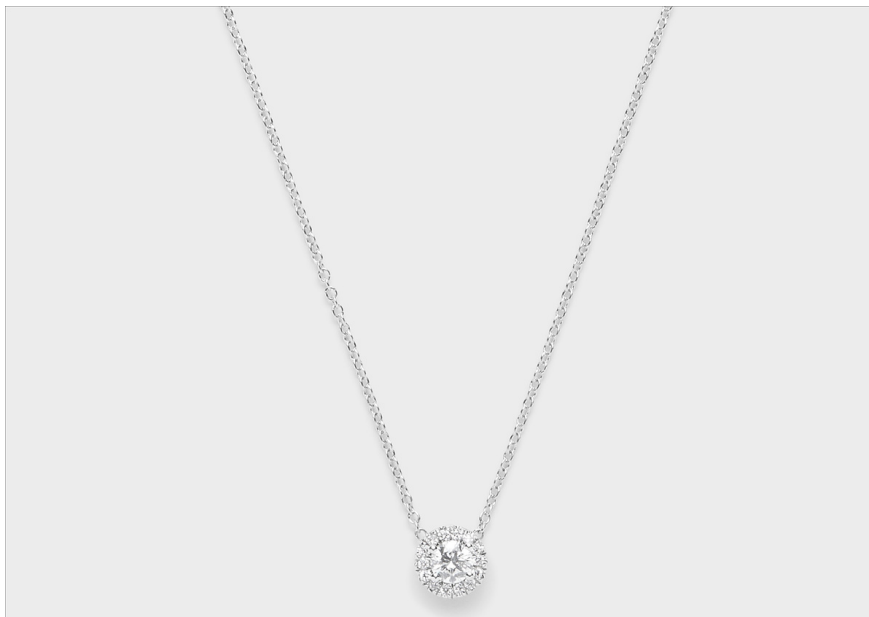
Featuring natural G-H color, SI clarity round diamonds, 0.40ctw



Rental Fee: \$75

Mixed Fancy Shape Diamond Necklace

Featuring natural G-H color, SI clarity fancy shape diamonds, 0.56ctw



Rental Fee: \$55

Diamond Halo Pendant

Featuring natural G-H color, SI clarity diamonds, 0.20ct center, 0.28ctw



Rental Fee: \$65

East West Emerald Cut Pendant

Featuring a natural I-J color, VS clarity emerald cut diamond, 0.50ctw



Rental Fee: \$50

Diamond Pear Drip Lariat

Featuring a natural G-H color, VS clarity emerald cut diamond, 0.75ctw



Rental Fee: \$55

Diamond Party Choker

Featuring five natural G color, SI clarity round diamonds set 1" apart, 0.05ct each, 0.25ctw



Rental Fee: \$50

Diamond Drip Lariat

Featuring natural G color, SI clarity round diamonds, 0.20ctw



Rental Fee: \$75

Classic Bezel Pendant

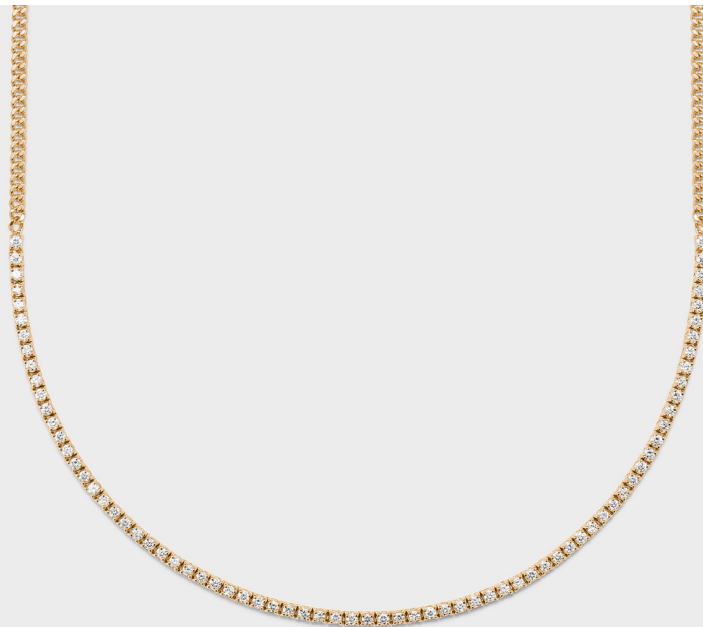
Featuring a natural I-J color, SI clarity round diamond, 0.30ctw



Rental Fee: \$195

Emerald Cut Chelsea Chain Necklace

Featuring a natural G-H color, VS clarity emerald cut diamond, 0.75ctw



Rental Fee: \$150 - \$185

Chelsea Chain Tennis Necklace

Featuring natural G-H color, SI clarity round diamonds, 0.015ct each, 1.11ctw - 1.83ctw



Rental Fee: \$75

Classic Round Diamond Pendant

Featuring a natural G-H color, VS clarity round diamond, 0.50ctw



Rental Fee: \$500

Bezel Set Emerald Cut Diamond Tennis Necklace

Featuring natural G-H color, SI clarity diamonds, 0.12ct each
= 6.63ctw



Rental Fee: \$500

Bezel Set Oval Tennis Necklace

Featuring natural natural G-H color, SI clarity diamonds,
0.10ct each = 6.93ctw



Rental Fee: \$850

Bezel Set Marquise Tennis Necklace

Featuring natural G-H color, SI clarity diamonds, 0.14ct
each = 8.17ctw



Rental Fee: \$895

Pear Shape Tennis Necklace

Featuring natural G-H color, SI clarity diamonds, 0.15ct
each = 11.07ctw



Bracelets



Rental Fee: \$235

Emerald Cut Tennis Bracelet

Featuring natural G-H color, VS clarity emerald cut diamonds, 7 inches, 0.10ct each, 4.92ctw



Rental Fee: \$250

Bezel Set Oval Tennis Bracelet

Featuring natural G-H color, VS clarity oval diamonds, 7 inches, 0.08ct each, 4.18ctw



Rental Fee: \$80 - \$300

Diamond Tennis Bracelet

Featuring natural G-H color, SI clarity round diamonds, 6.5 - 7 inches, 0.015ct - 0.8ct each, 1.28ctw - 4.96ctw



Rental Fee: \$115

Diamond Tennis Bracelet

Featuring natural G-H color, SI clarity round diamonds, 7 inches, 0.03ct each, 2.25ctw



Rental Fee: \$235

East West Emerald Cut Tennis Bracelet

Featuring natural G-H color, VS clarity emerald cut diamonds, 7 inches, 0.10ct each, 4.92ctw



Rental Fee: \$245

Mixed Fancy Shape Tennis Bracelet

Featuring natural G-H color, VS clarity fancy shape diamonds, 7 inches, 0.15ct each, 4.29ctw



Rental Fee: \$85

Chelsea Chain Tennis Bracelet

Featuring natural G-H color, SI clarity round diamonds, 7 inches, 0.015ct - 0.03ct each, 0.62ctw - 1.14ctw



Rental Fee: \$100

Antique Style Diamond Bracelet

Featuring natural G-H color, SI clarity 0.01ct round diamonds, 6.5 inches, 0.70ctw



Rental Fee: \$95 - \$115

Defined Diamond Tennis Bracelet

Featuring natural G-H color, VS/SI clarity round diamonds, 7 inches, 0.03ct - 0.05ct each, 2.01ctw - 2.90ctw



Rental Fee: \$165

Bezel Set Tennis Bracelet

Featuring natural G-H color, SI clarity round diamonds, 7 inches, 0.025ct each, 1.52ctw



Rings



Rental Fee: \$150

The City Band

Featuring natural G-H color, SI clarity 0.01ct diamonds, size 6, 2.00ctw



Rental Fee: \$100

Bella Pear Ring

Featuring two natural G-H color, SI clarity pear shaped diamonds, size 6, 0.48ctw



Rental Fee: \$105

Josephine Band

Featuring natural G-H color, SI clarity 0.03ct round diamonds, size 6, 1.61ctw



Rental Fee: \$125

Irene Toi et Moi Ring

Featuring natural G-H color, SI pear and round diamonds, size 6, 0.52ctw - 0.92ctw



Rental Fee: \$80

Danielle Vine Band

Featuring natural G-H color, SI clarity marquise diamonds,
size 6, 0.08ct each, 0.56 ctw



Rental Fee: \$75

Crossover Ring

Featuring natural G-H color, SI clarity round diamonds,
size 6 0.003ct each, 0.50ctw