

**MOBILE[®]
WARMING**

TECHNOLOGY by *FIELD SHEER*

DUAL POWER
JACKETS, VESTS & PANTS
USER MANUAL

VESTES, PANTALONS ET GILETS DUAL POWER
MANUEL D'UTILISATION

CHAQUETAS, PANTALONES Y CHALECOS DUAL POWER
MANUAL DE INSTRUCCIONES

**MOBILE[®]
WARMING**

TECHNOLOGY by *FIELD SHEER*

FOLLOW US



WWW.MOBILEWARMING.COM



Undercover Warming on the Move™
STAY WARM, STAY COMFORTABLE™

F.I.R. MOBILE WARMING TECHNOLOGY EN



Proprietary Mobile Warming® technology by Fieldsheer® is specially engineered for cold weather conditions. Fieldsheer® has developed Mobile Warming® comprehensive heating technology to keep you warm and comfortable. Our exclusive Mobile Warming®

heating technology utilizes F.I.R. (Far-Infrared) heat and ultra-fine metal fiber heating elements powered by lightweight, rechargeable, and powerful Lithium-Ion batteries. As heat builds, Mobile Warming® technology reflect and direct heat back towards the body ensuring that you stay warm. The combination of unique materials, construction techniques, and innovative design results in the most advanced heated gear available.

Introduction EN

Thank you for purchasing our Dual Power Performance Heated jacket or Vest. To ensure proper use and care of your gloves and our Mobile Warming batteries please read this user manual prior to use

Accessories EN

- One - Dual power heated jacket or vest and pants
- One - Power lead connector
- One - Y-Harness (Optional Accessory)
- One - 11.1v 5200 mAh Lithium-Ion batteries (Model#MW12V52)
- One - 12v Single AC battery charger (Model # ASA16U17)



MW12V52
11.1volt 5200mAh
Lithium-Ion



ASA16U17
Output: 12.6v, 1.6A
Input: AC 100v-240v



ACC0450
Power Lead Connector



Optional Accessory
Model: ACC0271
12volt Y-Harness

Garment Care EN

- Refer to your garment care label for care details
- Disconnect battery pack from the garment(s), when not in use or prior to washing
- Do not wring
- Do not bleach or use other harsh chemicals
- Do not dry clean
- Do not Iron
- Recommend hanging up if storing for extended period of time
- **Down Garments, Hand wash only**

Battery Storage EN



- Disconnect battery from garment.



- Power off battery(s) if applicable.



- Fully charge battery(s) prior to storage



- Keep battery(s) in cool dry place out of direct sunlight



- Charge every 3 months to maintain battery life. It is important to keep your battery charged when using or storing.



- Do not store Mobile Warming batteries below - 4 °F (- 20 °C)

⚠ WARNING



Do not use battery if you notice a change of shape (lumps), over-heating when charging or if rust or corrosion on the battery connectors is found. Use only with the charging adaptor provided with your product to charge your battery.



Never dispose of batteries in the garbage. Disposal of batteries in the garbage is unlawful under state and federal environmental laws and regulations. Always take used batteries to your local battery-recycling center.

This product contains chemicals known to the state of California to cause cancer and birth defects or other reproductive harm

Charging Battery(s)

EN

- Plug Mobile Warming charger into AC wall socket and connect your Mobile Warming® battery(s) to AC charger connectors.

- Red light on the AC charger indicates battery is charging.
- Green indicator light on the AC charger indicates battery is fully charged and ready for use or storage.
- Always charge batteries indoors.
- Always use the compatible Mobile Warming Chargers to charge your batteries. Failure to do so could result in product failure, damage or injury.
- To check for compatible charger, check charger compatibility at <https://mobilewarming.com/pages/battery-care>

Battery Use

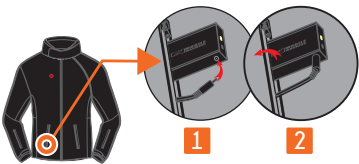
EN

IMPORTANT: Fully charge Lithium-ion batteries using compatible mobile warming charger before use.

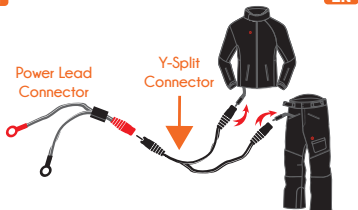
IMPORTANT: This product is intended to be used by an adult and therefore it is sole responsibility of purchaser to follow detailed instructions and warnings. The Purchaser agrees to indemnify Manufacturer for any unintended use/misuse.

- Avoid running Lithium-ion batteries completely dead. This will result in performance problems and reduced battery life.
- Lithium-ion batteries by nature have diminished capacity output in extremely cold temperatures. We recommend keeping batteries inside the garment to maximize battery performance.
- Do not allow Mobile Warming battery(s) to come in contact with water or liquids. If water or other liquids enter the battery interior, immediately unplug the battery from the garment. Do not use if you feel the battery is compromised.

Battery Installation

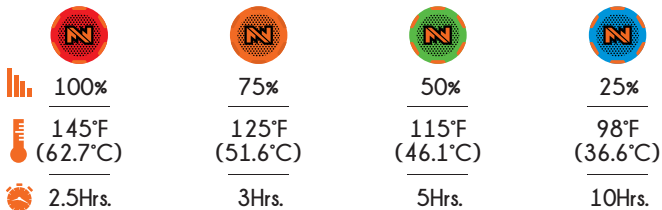


Y-Harness



To connect Jacket or Vest to Mobile Warming Pants you must purchase seperatley the Dual Power 12volt Y-Split Connector. This is required if multiple Dual Power garments are to be connected and powered together.

Dual Power: Battery Heat Ratings



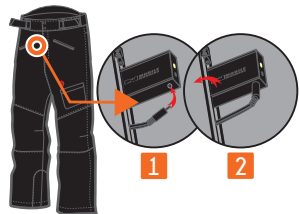
Power Ratings Based on Fully Charged Battery and Ambient Temperature of 72°F

Quick Start Guide

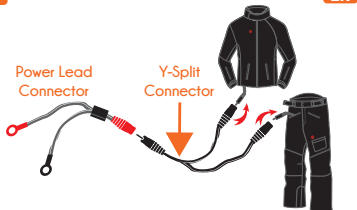
- 1- Fully Charge battery to 100%.
- 2- Press and hold the power button on the battery for a few seconds. Once it's powered on LED will be Blue/100% heat.
- 3- Run wire harness into the right Pocket and plug battery into the Jacket or Vest wire harness. Wire harness is located on the right side pocket. (See drawing)
- 4- Slide battery into wire harness pocket. (See drawing 2)
- 5- Now that the battery is connected to jacket or vest, press and hold the touch control button on for a few seconds. Once it's powered on LED will be Red/100% heat.
- 6- After the jacket or vest is on, push the control button to reach your desired settings.
- 7- To power off jacket or vest, press and hold the touch control button until light turns off. If you plan to not use the jacket or vest for more than a few days, unplug battery from the jacket or vest.

For More information or to see other products with Mobile Warming® technology, please visit us at mobilewarming.com

Battery Installation

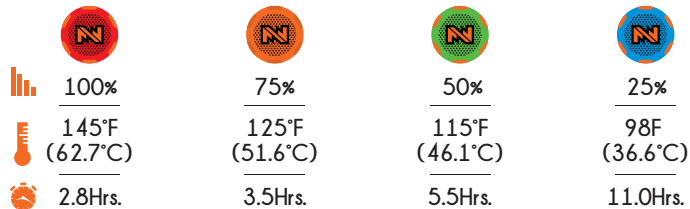


Y-Harness



To connect Jacket or Vest to Mobile Warming Pants you must purchase separately the Dual Power 12volt Y-Split Connector. This is required if multiple Dual Power garments are to be connected and powered together.

Dual Power: Battery Heat Ratings



Power Ratings Based on Fully Charged Battery and Ambient Temperature of 72°F

Quick Start Guide

- 1- Fully Charge battery to 100%.
- 2- Press and hold the power button on the battery for a few seconds. Once it's powered on LED will be Blue/100% heat.
- 3- Plug battery into the pants wire harness. Wire harness is located on the right side front pocket. (See drawing 1)
- 4- Slide battery into wire harness pocket. (See drawing 2)
- 5- Now that the battery is connected to jacket or vest, press and hold the touch control button on for a few seconds. Once it's powered on LED will be Red/100% heat.
- 6- After the pants are on, push the control button to reach your desired settings.
- 7- To power off pants, press and hold the touch control button until light turns off. If you plan to not use the jacket or vest for more than a few days, unplug battery from the pants.

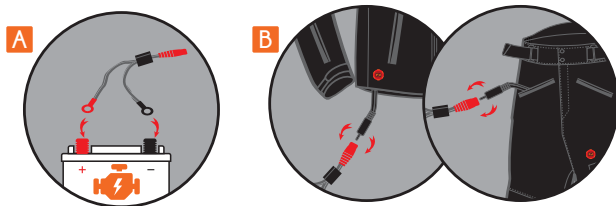
For More information or to see other products with Mobile Warming® technology, please visit us at mobilewarming.com

Quick Start Guide (Vehicle)

EN

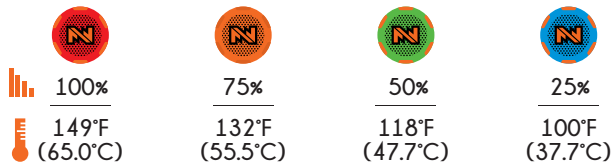
- 1- Turn off vehicle and remove key from ignition.
- 2- Locate and access vehicle's 12volt battery.
- 3- Disconnect the vehicles Negative(-) Cable and remove from battery terminal. Connect the Negative(-) wire from the supplied Mobile Warming Power Lead Connector to the battery terminal and re-connect vehicle's Negative(-) Cable. (See Drawing A)
- 4- Disconnect the vehicles Positive(+) Cable and remove from battery terminal then connect the Positive(+) wire from the supplied Mobile Warming Power Lead Connector to the battery terminal and re-connect vehicle's Positive(+) Cable. (See Drawing A)
- 5- Route Mobile Warming Power Lead Connector the right side of vehicle Seat with a minimum of 2in (5cm) of the Mobile Warming Power Lead Connector exposed.
- 6- Start Vehicle and connect Jacket or Vest to Power Lead Connector. Power Lead is located in the interior pocket.(See Drawing B)
- 7- Now that the battery is connected to jacket or vest, press and hold the touch control button for a few seconds. Once it's powered on LED will be Red/100% heat.
- 8- After the jacket or vest is on, push the control button to reach your desired settings.

- 9- To power off jacket or vest, press and hold the touch control button until light turns off. Always remember to disconnect the Jacket or Vest from the power lead harness before leaving vehicle.



Dual Power: Power Lead Heat Ratings

EN



Power Ratings Based on Ambient Temperature of 72 F

Warranty Terms

EN

Our warranty applies only to the original purchaser and only for items purchased from an authorized Mobile Warming Dealer.



Undercover Warming on the Move™
STAY WARM, STAY COMFORTABLE™

Limited Two Year Warranty

EN

When you purchase a Mobile Warming brand product from an authorized Mobile Warming retailer within the United States both the construction and electrical heating components of the product are warranted to be completely free from factory defects in materials and workmanship for two (2) years from the date of purchase. If any failure in the construction or the heating function of any Mobile Warming product purchased from an authorized Mobile Warming dealer within the United States occurs due to the manufacturer's defect within two years of the purchase of the product, the product will be repaired at no charge.*

90 Day Rechargeable Battery & Charger Warranty

EN

Mobile Warming Gear rechargeable lithium-ion battery packs and chargers are under warranty from factory defect for 90 days from the initial purchase date. Mobile Warming will repair or replace any battery or charger found to be defective under normal use within the 90 day warranty period.

For more information on Warranty terms, please visit

mobilewarming.com/pages/warranty

Legal

EN

Any damage caused to any Mobile Warming® Gear item by misuse, abuse, improper care, accident, normal wear and tear, or the natural breakdown of materials over an extended period of time and use are not covered in this warranty. Any alterations or repairs (attempted or otherwise) performed on any Mobile Warming® Gear item voids any and all warranties offered by Mobile Warming® Gear for that particular item.

Mobile Warming® Gear is technical athletic apparel and is not intended for use as work wear or for use in strenuous or demanding circumstances or extreme conditions.

Mobile Warming®, Stay Warm Stay Comfortable, MW Connect™ and its associated images are properties of Tech Gear 5.7 Inc. The mobile warming® and fieldsheer logos are trademarks of Tech Gear 5.7 inc.

Patents: techgear5-7.com/patents All rights reserved.

This device complies with part 15 of the FCC Rules and RSS-Gen of IC Rules. Operation is subject to the following two conditions: (1) This device may not cause harmful interference, and (2) this device must accept any interference received, including interference that may cause undesired operation.

NOTE This equipment has been tested and found to comply with the limits for a Class B digital device, pursuant to part 15 of the FCC Rules. These limits are designed to provide reasonable protection against harmful interference in a residential installation. This equipment generates, uses, and can radiate radio frequency energy and, if not installed and used in accordance with

the instructions, may cause harmful interference to radio communications. However, there is no guarantee that interference will not occur in a particular installation.

If this equipment does cause harmful interference to radio or television reception, which can be determined by turning the equipment off and on, the user is encouraged to try to correct the interference by one or more of the following measures:

- Reorient or relocate the receiving antenna.
- Increase the separation between the equipment and receiver.
- Connect the equipment into an outlet on a circuit different from that to which the receiver is connected.
- Consult the dealer or an experienced technician for help.

CAUTION: To comply with the limits of the Class B digital device, pursuant to Part 15 of the FCC Rules, this device must be used with certified peripherals and shielded cables. All peripherals must be shielded and grounded. Operation with non-certified peripherals or non-shielded cables may result in interference to radio or reception.

MODIFICATION: Any changes or modifications of this device could void the warranty.



