

# WALL PACK (MWP10)



## DESCRIPTION

Slim wall pack is available in 80W for a variety of applications including building perimeter, entrances, stairways and security lighting. MWP10 series of luminaires provides a low-profile architectural style with the power of bright, energy efficient LEDs. It has a rugged aluminum construction with multi-mount capabilities. 0° to +90° tilt adjustments. For a building that has a modern or futuristic look.

## SPECIFICATION FEATURES

### Construction

- Sealed die-casting profile for outdoor applications.
- Suitable for applications requiring 3G testing prescribed by ANSI C136.31.

### Optics

- Single CCT 5000K is available for standard version.
- 11,200 Lumens.
- Tempered UV coated flat lens provide outstanding performance, uniformity, and glare control.

### Electrical

- Standard drivers feature electronic universal voltage (120-277 50/60Hz) operation.
- 1-10V Dimming
- Greater than 0.9 power factor, less than 20% harmonic distortion, and is suitable for operation in -40°F to 104°F ambient environments.

### Lifespan

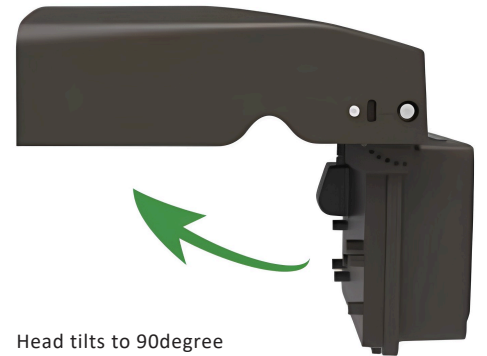
- Estimated 50,000-hour LED lifespan based on IES LM-80 results and TM-21 calculations.

### Certifications

- UL cUL wet location listed.
  - DesignLights Consortium™ Qualified.
- Note:** DesignLights Consortium™ Qualified and classified for DLC Standard (all lumen packages), refer to [www.designlights.org](http://www.designlights.org) for details.

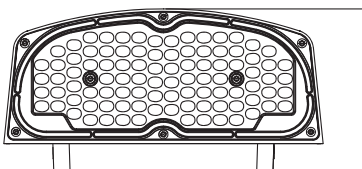
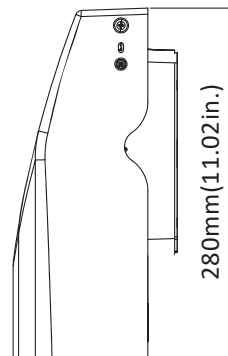
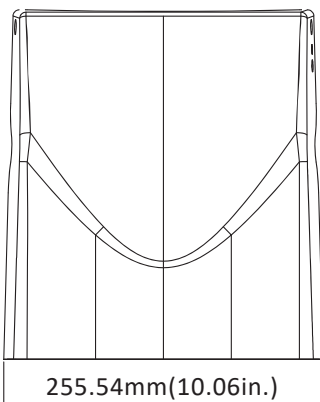
### Warranty

- Five-year warranty.



## DIMENSIONS

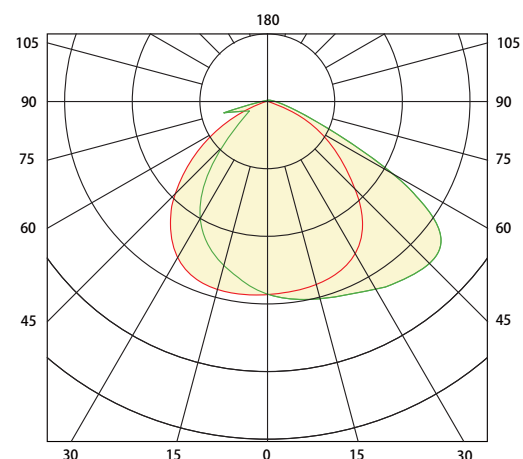
unit: mm/inch

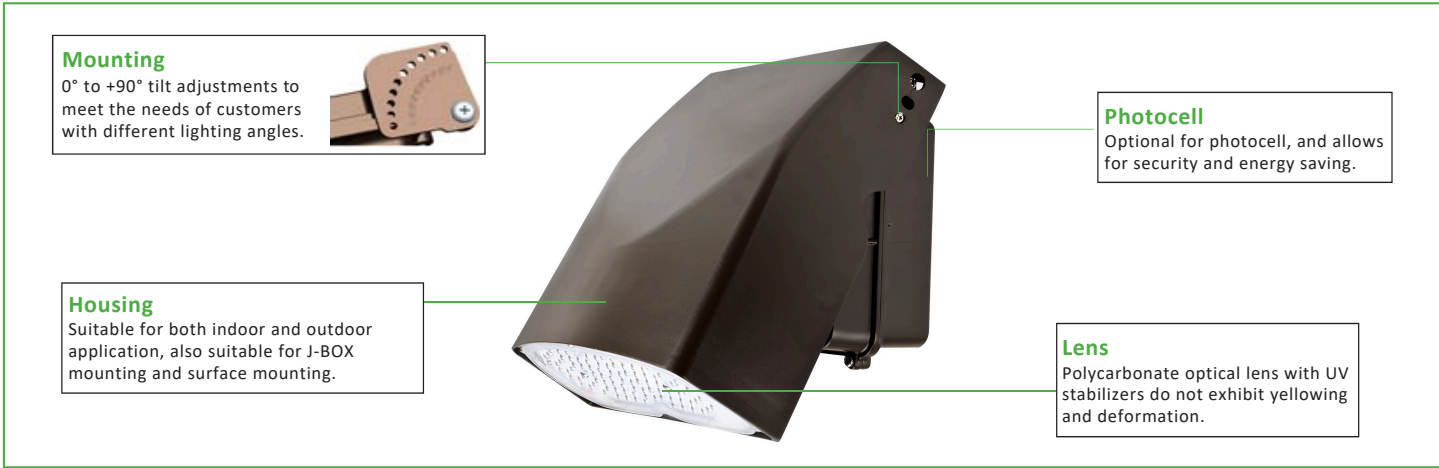


129.3mm (5.09in.)

**Net Weight:**  
80W: 7.804lb

## PHOTOMETRICS





## PERFORMANCE DATA

SYSTEM WATTS	VOLTAGE	CRI	LUMENS	LPW
80W	120-277VAC	70	11200lm	140 lm/w

## ELECTRICAL DATA

Number of Drivers	Driver Current (mA)	Nominal Power (W)	Input Voltage (V)	Current (Amps)
1	2120	80	120	0.67
		80	208	0.38
		80	240	0.33
		80	277	0.29