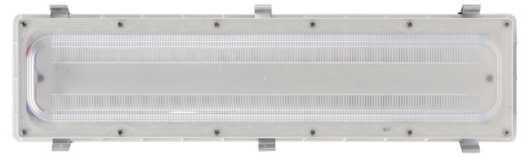


LED VAPOR TIGHT LINEAR

MVT03



Sunco's MVT03 Vapor Tight series provides exceptional illumination performance, cost-effective lighting and are designed for easy installation to save time and money. Housing is completely sealed against moisture and environmental contaminants. The MVT03 is suitable to match existing fluorescent fixtures or keep the same aesthetic throughout your site. Ideal for using in industrial, manufacturing, grocery and retail spaces.



SPECIFICATION

Construction

- Complete housing is sealed against moisture and environmental contaminants.
- Two die-cast aluminum separable structures are fixed by elastic sheets.
- Threaded hole heat dissipation design to achieve longer lifespan.

Optics

- Up to 95W output 11600 lumens with 2 feet long.
- Adjustable lumen output with four lumen settings 40%, 60%, 80%, 100% (5000LM, 7000LM, 9000LM, 11600LM).
- Switchable color temperature 4000K/5000K.

Electrical

- Universal 120-277VAC input voltage.
- 0-10V dimming standard for a dimming range of 100% to 10%.
- Operating temperature is -40°F to 113°F.

Controls

- Optional PIR sensor.

Lifespan

- Estimated 50,000-hour LED lifespan based on IES LM-80 results and TM-21 calculations.

Warranty

- Five-year warranty.

Certifications

- UL cUL wet location listed.

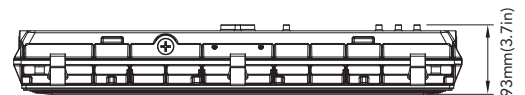
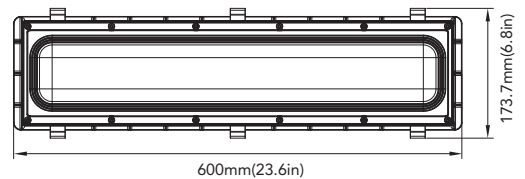
Note

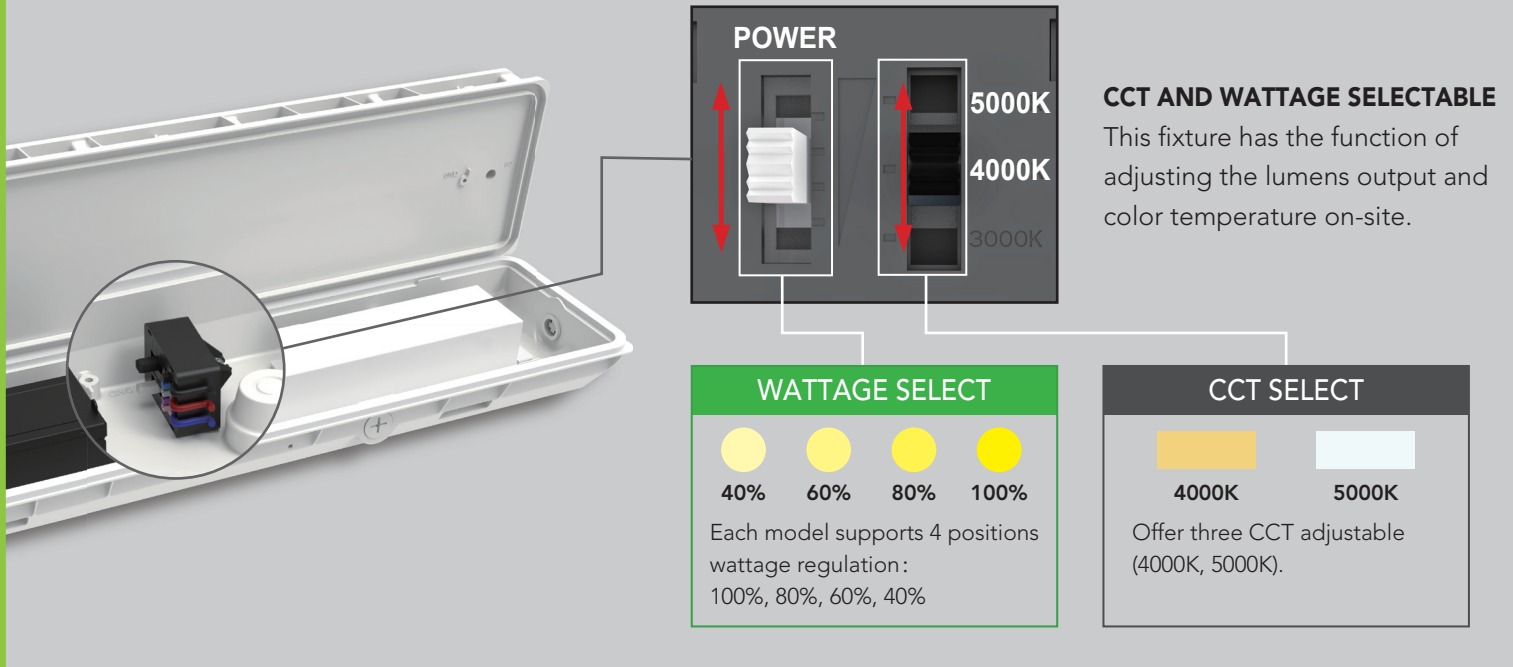
- Actual performance may differ as a result of end-user environment and application. All values are design or typical values, measured under laboratory conditions at 77°F(±41°F) specifications subject to change without notice.

DIMENSION

unit: mm/inch

Net weight:
95W: 8.197lbs





Mounting Kit

Default bracket for surface mounting and optional V hook for pendent mounting.

1/2 Inch Threaded Hole

Support wires coming from the hole for easier wire connectoins.



Housing

Two die-cast aluminum separable structures are fixed by elastic sheets.

Photometry

Parking garage photometry for selection.

Heat Dissipation Through Hole

Let air convect to remove heat rapidly. Isolated from the heat source of the power box to achieve longer life

PERFORMANCE DATA

PHOTOMETRY	SYSTEM WATTS	VOLTAGE	LUMENS 4000K(80CRI)	LPW 4000K(80CRI)	LUMENS 5000K(80CRI)	LPW 5000K(80CRI)
PARKING GARAGE	95W	120-277VAC	11400 lm	120 lm/W	11600 lm	122 lm/W

ADJUSTABLE LUMEN OUTPUT TABLE

SETTING	CCT	PARKING GARAGE	
		SETTING WATTS (W)	LUMENS (lm)
100%	5000K	95	11600
80%	5000K	73	9000
60%	5000K	57	7000
40%	5000K	40	5000

MOUNTING



Surface Mounting (Default)



V-Hook Pendant Mounting*

*Purchased Separately