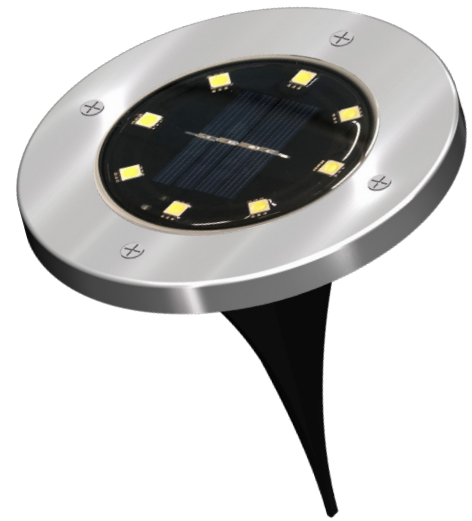
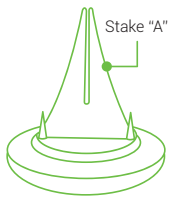


SOLAR PATH LIGHTS

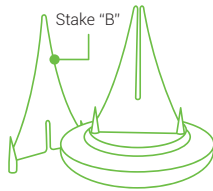
Install Guide and Manual



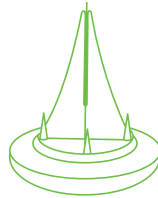
EASY INSTALLATION



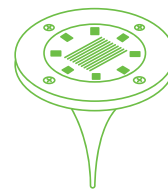
Attach Stake "A"



Attach Stake "B"



Final Assembly

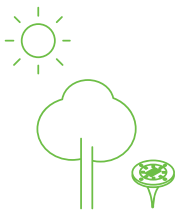


Turn on the switch

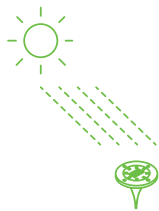


Ready to charge
Stake into the ground

HOW TO GET THE MOST OUT OF YOUR SOLAR PATH LIGHTS



X



✓



X



✓



For the best results
place in full sun



Results in shorter
working time

SPECIFICATIONS

Power Supply	Built-in Ni-Mh battery
Battery Capacity	600mAh
Charging Time	6-8 hours (in sunlight)
Working Time	8-10 hours (fully recharged)
Housing	Steel
Warranty	1 year

NOTE:

1. Allow the battery to charge for 6-8 hours before the first use.
2. In the event of extreme weather you will want to bring the path lights indoors.
3. For the best charge, ensure the solar panel stays clean.

TROUBLESHOOTING

LIGHT WON'T TURN ON?

1. Switch the path light on and bring to a dark room. If the path light still isn't lighting up, then please allow the path light to receive direct sunlight for a few hours (6-8 is best), then test again in a dark room.
2. Check whether the battery is working.
3. Make sure the solar path light isn't being obstructed by a tree, bush, or building during the day. Additionally, ensure that the path light isn't under a light source at night such as a porch or street light.