

SHOEBOX 150W/200W PARKING LOT LED LIGHT

Installation Manual

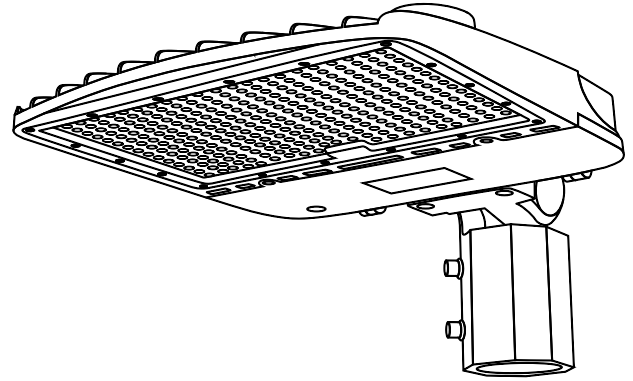
COMPONENTS



x1
Adjustable Slip
Fitter (AM)

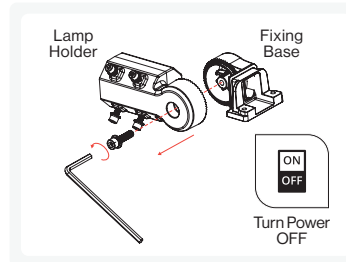


x1
Dusk to Dawn
Sensor

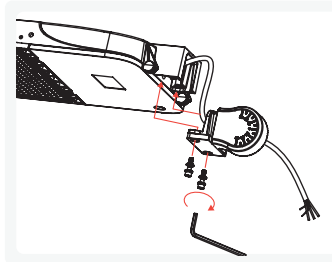


EASY INSTALLATION

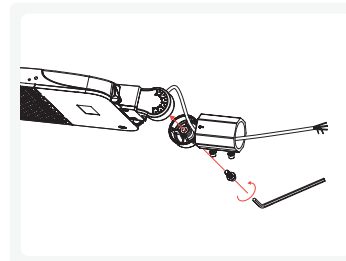
Adjustable Slip Fitter (AM) Mounting For Round Poles



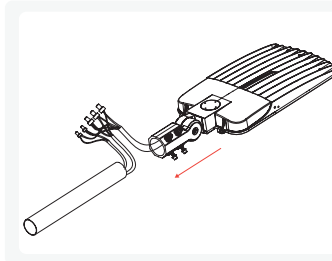
1. Turn off circuit breaker that provides power to light switch.
2. Use wrench to disassemble slip fitter fixing base from lamp holder.



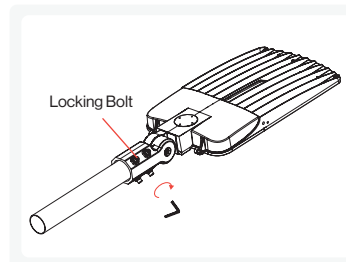
3. Pull fixture wires through fixing base as shown.
4. Tighten screws to attach fixing base to shoebox light fixture.



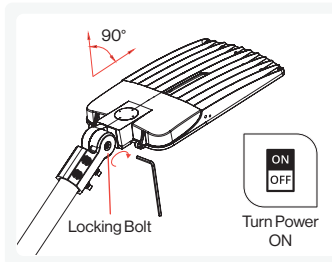
5. Pull fixture wires through lamp holder.
6. Use wrench to secure lamp holder to fixing base.



7. Loosen (4) locking bolts on slip fitter.
8. Connect supply wires to fixture wires with wire nuts.
 - Black to Black
 - White to White
 - Green to Green



9. Secure to pole by tightening (4) locking bolts.



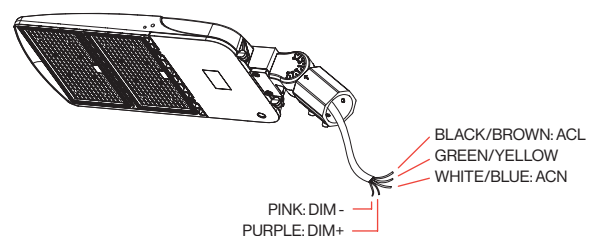
10. Turn on circuit breaker and test light.
11. Adjust angle 0-90° to aim light beam.

DIMMING OPTIONS

Optional: To dim light, connect a compatible dimmer switch (not included) to wires in fixture as shown. Choose appropriate dimming method:

1. Constant current can be achieved by 1-10VDC dimming.
2. PWM signal dimming.
3. Variation of resistance unit dimming.

WIRING DIAGRAM



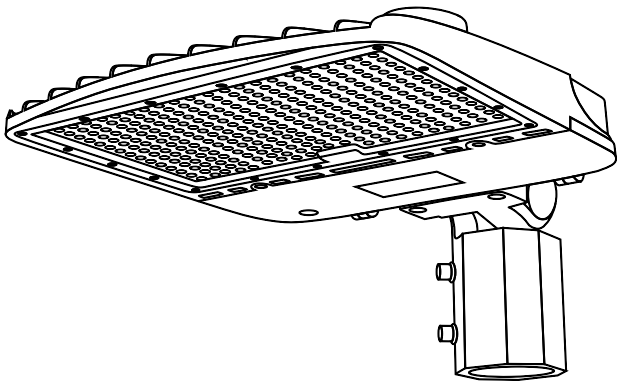
SHOEBOX 150W/200W PARKING LOT LED LIGHT

Installation Manual

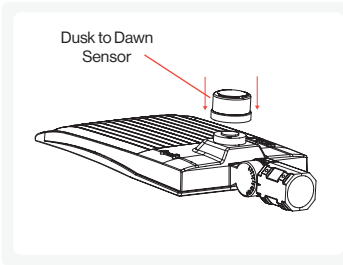
DUSK TO DAWN BEST PRACTICES

This light fixture includes a Dusk to Dawn photocell sensor which controls light operation based on ambient light levels. The sensor turns the light on in the absence of light and turns it off again when light is detected. Please note:

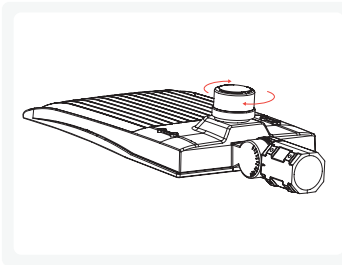
- The fixture must be powered on continuously for the photocell sensor to function properly.
- Ensure the fixture is not obstructed by a tree or building so the sensor can properly detect available light levels.
- Do not place the fixture near other light sources or reflective surfaces. If a bright light is detected in the area, the sensor will not turn the fixture on.



EASY INSTALLATION Adding Dusk to Dawn Sensor



1. Insert blue Dusk to Dawn sensor into (3) curved slots on lamp top.



2. Twist unit clockwise to lock into place.

WARNING

- To reduce the risk of fire, electric shock, or physical injury:**
- This product should be installed in accordance with regional and local laws or regulations by a person familiar with the construction and operation of the product and the hazards involved.
 - Check for shipping damage prior to install. If the product is damaged, do not use it.
 - Always turn off power to the switch and circuit breaker before installing a new light fixture.
 - Proper grounding is required to ensure safety. Do not install this fixture in the rain.
 - If you experience smoke or fire in the wires or lamps during or after installation, turn off the power immediately and notify relevant personnel.
 - Clean the fixture regularly to ensure proper operation. Do not clean with harsh solvents.
 - Use safety precautions. Safety eyeglasses and gloves are recommended

SPECIFICATIONS

Voltage	120-277V	120-277V
Wattage	150W	200W
Moisture Rating	Wet	Wet
Housing	Aluminum Alloy + PC	Aluminum Alloy + PC
Weight	12.5lbs	17lbs
Warranty	7 years	7 years