

# 6 INCH REMODEL CAN

## Install Guide and Manual



### EASY INSTALLATION



Turn Power OFF

**1. Turn off the circuit breaker that provides power to the light switch for the recessed lights.**  
 • Disconnect existing light fixture (if applicable).

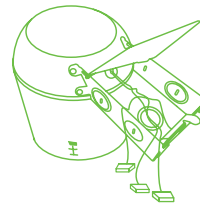


**2. Locate ceiling joists in the area where you want to install the recessed light with a stud finder to ensure holes do not overlap a joist.**

**3. Use the provided template to cut a 6.30" diameter hole in the ceiling.**

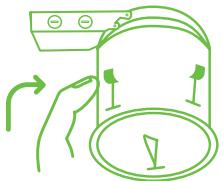


**4. Pull supply wire through the opening to make electrical connections.**

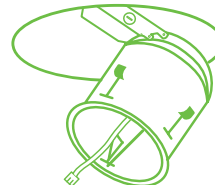


**5. Open the junction box and connect the wires with wire nuts:**  
 • Live to Live (black);  
 • Neutral to Neutral (white);  
 • Ground to Ground (yellow/green).

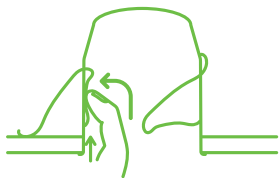
**6. Tuck all wires into junction box. Replace the cover.**



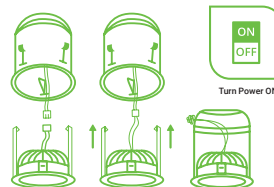
**7. Push the three remodeling clips inside so they won't catch when you insert the can into the ceiling.**



**8. Insert the housing in ceiling cutout, junction box end first. Continue until the can's flange is flush with the drywall ceiling.**



**9. After can is inserted in the ceiling, secure with remodeling clips.**  
 • On clips, peel off yellow paper to reveal sticky portion;  
 • Push each clip up and outward, through housing slot, then against the can side as shown, until it locks in place. This will clamp the recessed can against the ceiling.



**10. Adding a retrofit light:**  
 • Attach TP24 connector from housing to the retrofit;  
 • Hook retrofit mounting clips into the housing;  
 • Line up trim ring with can opening;  
 • Push downlight into the housing until it is secure.

**11. Turn on circuit breaker and test the light.**

### WARNING

- To reduce the risk of fire, electric shock or injury to people:
- This product should be installed in accordance with the applicable installation code by a person familiar with the construction and operation of the product and the hazards involved.
  - Abide by related regional and local laws or regulations.
  - Proper grounding is required to ensure safety.
  - Check for damage during shipping prior to install. If the product is damaged, do not use it.
  - Turn off the switch and circuit breaker before installing this recessed can.
  - Use safety precautions. Safety eyeglasses and gloves are recommended.
- NOTE:** Fixtures are classified for insulated ceilings-type IC and type-T and for suspended ceiling type-S.
- Please review instructions carefully before proceeding.

### SPECIFICATIONS

Voltage	120/277V
Operating Temperature	Max 194°F
Suitable for Locations Ingress	Wet & Damp
Housing	Aluminum
Weight	1.2lbs
Warranty	5 years