

5/6" RETROFIT GIMBAL SELECTABLE CCT

Install Guide and Manual



COMPONENTS

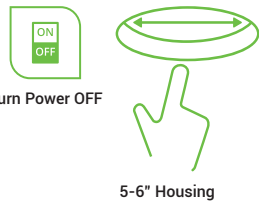


TP24 Connector



E26 Base

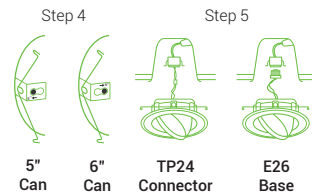
EASY INSTALLATION



Turn Power OFF

5-6" Housing

1. Turn off circuit breaker that provides power to the light switch for the recessed lights.
2. Locate the recessed housing.
 - Remove previous fixture. Fixture may be hot so allow time to cool after turning off power.
3. Ensure the size of the opening (5" or 6").



5" Can

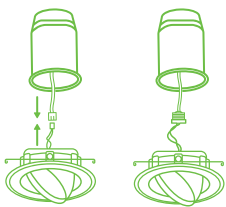
6" Can

TP24 Connector

E26 Base

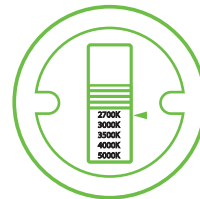
Required Tools: Ladder, Drywall Saw, Wire Strippers, Screwdriver

4. Adjust the sizing on the mounting bracket using the screw. Slide the bracket to choose 5" or 6" can size.
 - Tighten screw
5. Determine the type of power connector available in your recessed can housing.
 - TP24 Connector
 - E26 Socket

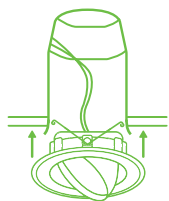


6. Connect the appropriate adapter (E26 or TP24) to pull power from the housing.

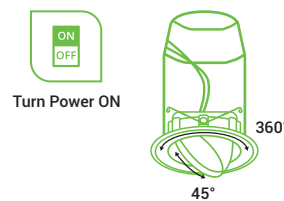
NOTE: The wires may come lose from the connectors. Ensure they are attached.
7. Turn on power and test light.



8. **BEFORE PROCEEDING:** On back of retrofit fixture, slide the CCT Selection Switch to choose from five color temperatures (2700K, 3000K, 3500K, 4000K, 5000K). Try each CCT to determine best fit.
 - Light will use the preferred setting whenever you turn it on.
 - Turn off light switch after selecting your choice and continue install.



9. Hook retrofit's spring clips into housing.
10. Tuck all wires into the can.
11. Line up trim ring with opening.
12. Push downlight into can until secure.



Turn Power ON

13. Turn on circuit breaker and test light.
 - Swivel or tilt optic to adjust light beam position.

WARNING

- To reduce the risk of fire, electric shock or injury to people:
- This product should be installed in accordance with the applicable installation code by a person familiar with the construction and operation of the product and the hazards involved.
 - Abide by related regional and local laws or regulations.
 - Do not alter, relocate or remove wiring.
 - Do not make or alter any open holes in enclosure or electrical components.
 - Proper grounding is required to ensure safety.
 - Check for damage during shipping prior to install. If the product is damaged, do not use it.
 - Turn off the switch and circuit breaker before installing this LED light.
 - Use safety precautions. Safety eyeglasses and gloves are recommended.
 - Please review instructions carefully before proceeding.

SPECIFICATIONS

Voltage	120V
Wattage	12W
Suitable for Locations Ingress	Damp
Housing	Aluminum+PC
Weight	1.07lbs
Warranty	7 years