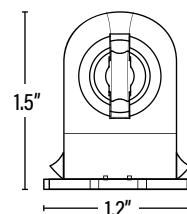
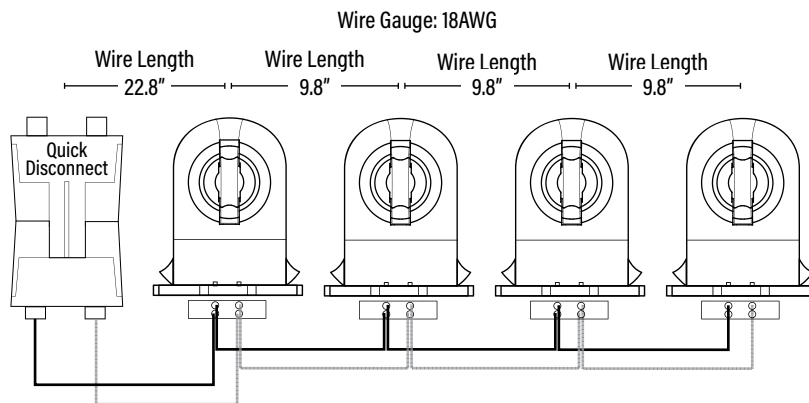




Item#: **72745**
WIRING HARNESS FOR 4 SINGLE-END DIRECT WIRE LED TUBES
 ACCESSORY

APPLICATION

Non-shunted wiring harness for retrofitting 4 lamps fluorescent fixtures to LED Ready for single-end direct wire tubes.



* Also Includes pairing non-wired, non-shunted sockets.

PACKAGING		UPC	DIMENSIONS (LxWxH)	GROSS WEIGHT (Lbs)
Master Carton	100	10811768025009	--	--
Individual Item	1	811768025002		
Country of Origin	China			
HS Tariff	9405.99.4090			

ORDERING

ITEM#	DESCRIPTION	CASE
72745	WIRING HARNESS FOR (4) LED T8 TUBES (4) PRE-WIRED NON-SHUNTED AND (4) NON-WIRED SOCKETS WITH QUICK DISCONNECT	100

GENERAL WIRING DIAGRAM - Follow lamp installation for specific wiring instructions.

! WARNING - Disconnect power before installing or servicing.

