



Material Handling Equipment

Battery & Charger Stands for Transfer Carriage Systems

Change forklift batteries more efficiently while protecting lift truck fleet investments with BHS forklift battery stands. Two series of models are available to complete your transfer carriage system, sharing many of the same benefits, and compartment configurations. BHS battery stands are highly customizable, with many options available to create a specially-tailored storage area for every application. Continue reading to learn about the benefits of BHS battery stands and the options available.



Ask about custom warehouse equipment for your unique application.

As a full-service original equipment manufacturer, BHS can build custom solutions for any material handling challenge. Contact the BHS sales team at bhs@bhs1.com to learn more.

 **1.800.BHS.9500**

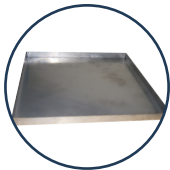
 **BHS1.com**

What's the Difference?

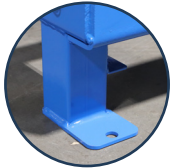


VS.

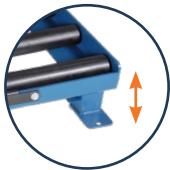
Single Level System Stand *BS-SL*



Compatible with stainless steel Drip Pans which provide OSHA-compliant spill containment. Add color-indicating AcidSorb Pillows to make drip pan maintenance simpler and safer (available from BHS).



0.25" x 3" x 5" welded feet anchor to the ground for unfailing stability.



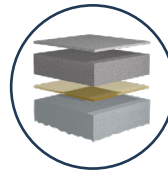
Standard roller height available from 8" to 18".* Option BS-LE required for heights above 8". Shelf heights fixed at 55.5" regardless of roller height.



Available without charger shelf.



OSHA Blue paint finish standard. Other colors available upon request.



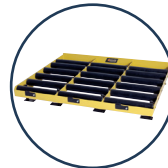
Not compatible with Drip Pans. Battery room floor's top layer must be treated to resist electrolyte (available through BHS)



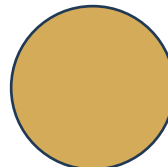
Threaded-rod feet allow the roller height of the stand to be adjusted $\pm 0.5"$ (± 13 mm). Shelf height varies with roller height.



Standard roller height available from 4.5" to 29.5" Option BS-LE is required for heights above 10".*



Available without charger shelf.



OSHA Safety Yellow paint finish standard. Other colors available upon request.

*Roller height required when ordering

Shared Features & Benefits

BOTH SERIES OF STANDS OFFER THE FOLLOWING, MOST COMPREHENSIVE SET OF FEATURES IN THE INDUSTRY

- Heavy-duty steel constructed battery stands are finished with a durable powder-coat to resist scratches and corrosion
- Spark-proof, poly-sleeved rollers reduce corrosive build-up and extend product life
- Models available in various compartment widths to accommodate batteries from 12" to 42"
- 40" (1016 mm) standard compartment depth
- Hitch pin-secured roller axles for ease of maintenance
- Rearward-pitched battery slots to assist in battery retention on BS-SL stands; BS stand feet can be adjusted to achieve this
- Six rollers per compartment
- 26" deep charger shelf comes standard; can be ordered without
- CR-1 cable retractor mounting holes
- Charger shelves come slotted, allowing for optional 6" shelf extension between stands
- Charger connector mounting holes
- Charger anchoring slots for securing most makes of chargers
- Auxiliary backstops reduce compartment depth to 34" (864 mm) and must be noted at time of order
- Flip-up battery safety stop per compartment
- Seismic zone 4 rated
- Custom designs available to fit all battery changing requirements

**Roller height required when ordering*



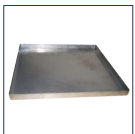
Stand Options

CUSTOMIZE BATTERY STANDS TO YOUR OPERATION BY CHOOSING FROM THE OPTIONS BELOW



Charger Shelf Rearward (BS-RWD)

Offsets shelf to rear to eliminate obstruction over compartment



Drip Pan (DK, DP)*

Contains spills, maintaining a cleaner, safer environment



Leg Extension (BS-LE)

Increases roller height beyond standard height up to 18" on BS-SL or up to 25.9" on BS stands
Note: Consult factory for this option



Poly Lead Roller

Replaces the first roller in each compartment with a polyethylene roller to eliminate potential bearing failure in frequent change-out environments



Shelf Extension - 6" (BS-EXT-6)

Adds 6" (152 mm) extension between stands to support larger charger cabinets



Charger Shelf Forward (BS-FWD)

Space-saving shelf designed for battery rooms with limited space



Rubber Backstop (BS-RBR-STP)

Cushions battery during placement into stand
Note: Slightly reduces compartment depth by 3/4".
Consult factory on recommended quantity.

** Exclusive to BS-SL*

Models & Specifications

CHOOSE YOUR MODELS BASED ON THE NUMBER OF BATTERY COMPARTMENTS NEEDED AND THEIR WIDTH



SINGLE LEVEL SYSTEM STANDS

MODEL	ROLLER COMPARTMENT WIDTH	FRAME WIDTH	O. A. WIDTH
BS-12-2-SL	12" / 305 mm	26" / 660 mm	27" / 686 mm
BS-12-3-SL	12" / 305 mm	38.875" / 987 mm	40" / 1016 mm
BS-15-2-SL	15" / 381 mm	32" / 813 mm	33" / 838 mm
BS-15-3-SL	15" / 381 mm	47.875" / 1216 mm	49" / 1245 mm
BS-15-4-SL	15" / 381 mm	63.75" / 1619 mm	65" / 1651 mm
BS-15-6-SL	15" / 381 mm	95.5" / 2426 mm	97" / 2464 mm
BS-18-2-SL	18" / 457 mm	38" / 965 mm	39" / 991 mm
BS-18-3-SL	18" / 457 mm	56.875" / 1445 mm	58" / 1473 mm
BS-18-4-SL	18" / 457 mm	75.75" / 1924 mm	77" / 1956 mm
BS-18-6-SL	18" / 457 mm	113.5" / 2883 mm	115" / 2921 mm
BS-21-2-SL	21" / 533 mm	44" / 1118 mm	45" / 1143 mm
BS-21-3-SL	21" / 533 mm	65.875" / 1673 mm	67" / 1702 mm
BS-21-4-SL	21" / 533 mm	87.75" / 2229 mm	89" / 2261 mm
BS-24-2-SL	24" / 610 mm	50" / 1270 mm	51" / 1295 mm
BS-24-3-SL	24" / 610 mm	74.875" / 1902 mm	76" / 1930 mm
BS-27-2-SL	27" / 686 mm	56" / 1422 mm	57" / 1448 mm
BS-27-3-SL	27" / 686 mm	83.875" / 2130 mm	85" / 2159 mm
BS-30-2-SL	30" / 762 mm	63.75" / 1619 mm	65" / 1651 mm
BS-30-3-SL	30" / 762 mm	95.5" / 2426 mm	97" / 2464 mm
BS-33-2-SL	33" / 838 mm	68" / 1727 mm	69" / 1753 mm
BS-33-3-SL	33" / 838 mm	101.875" / 2588 mm	103" / 2616 mm
BS-36-2-SL	36" / 914 mm	75.75" / 1924 mm	77" / 1956 mm
BS-36-3-SL	36" / 914 mm	113.5" / 2883 mm	115" / 2921 mm
BS-42-2-SL	42" / 1067 mm	87.75" / 2229 mm	89" / 2261 mm

Model Number Key: BS-XX-Y-SL
XX = Roller Compartment Width
Y = Number of Compartments
SL = Single Level



BATTERY ROLLER STANDS

MODEL	ROLLER COMPARTMENT WIDTH	FRAME WIDTH	O. A. WIDTH
BS12-2	12" / 305 mm	26" / 660 mm	27" / 690 mm
BS12-3	12" / 305 mm	38.875" / 987 mm	40" / 1020 mm
BS15-2	15" / 381 mm	32" / 813 mm	33" / 840 mm
BS15-3	15" / 381 mm	47.875" / 1216 mm	49" / 1245 mm
BS15-4	15" / 381 mm	63.75" / 1619 mm	65" / 1655 mm
BS15-6	15" / 381 mm	95.5" / 2426 mm	97" / 2465 mm
BS18-2	18" / 457 mm	38" / 965 mm	39" / 995 mm
BS18-3	18" / 457 mm	56.875" / 1445 mm	58" / 1475 mm
BS18-4	18" / 457 mm	75.75" / 1924 mm	77" / 1960 mm
BS18-6	18" / 457 mm	113.5" / 2883 mm	115" / 2925 mm
BS21-2	21" / 533 mm	44" / 1118 mm	45" / 1145 mm
BS21-3	21" / 533 mm	65.875" / 1673 mm	67" / 1705 mm
BS21-4	21" / 533 mm	87.75" / 2229 mm	89" / 2265 mm
BS24-2	24" / 610 mm	50" / 1270 mm	51" / 1295 mm
BS24-3	24" / 610 mm	74.875" / 1902 mm	76" / 1935 mm
BS27-2	27" / 686 mm	56" / 1422 mm	57" / 1450 mm
BS27-3	27" / 686 mm	83.875" / 2130 mm	85" / 2160 mm
BS30-2	30" / 762 mm	63.75" / 1619 mm	65" / 1655 mm
BS30-3	30" / 762 mm	95.5" / 2426 mm	97" / 2470 mm
BS33-2	33" / 838 mm	68" / 1727 mm	69" / 1752 mm
BS33-3	33" / 838 mm	101.875" / 2588 mm	103" / 2620 mm
BS36-1	36" / 914 mm	38" / 970 mm	39" / 995 mm
BS36-2	36" / 914 mm	75.75" / 1924 mm	77" / 1960 mm
BS36-3	36" / 914 mm	113.5" / 2883 mm	115" / 2925 mm
BS42-1	42" / 1067 mm	44" / 1118 mm	45" / 1145 mm
BS42-2	42" / 1067 mm	87.75" / 2229 mm	89" / 2265 mm

Design the Ideal Battery Room

Contact our product specialists who will review your application requirements before designing a battery room suited for your facility, complete with a battery transfer cart or carriage, battery stands, and required safety equipment. Call 1.800.BHS.9500.



NORTH AMERICA: P.O. Box 28990, St. Louis, MO 63132-0990 USA • 1.800.BHS.9500 • Fax: 314.423.6444 • sales@bhs1.com • BHS1.com
INTERNATIONAL: P.O. Box 12429, St. Louis, MO 63132-0990 USA • +1 314 423 2075 • Fax: +1 314 423 3034 • sales@bhs1global.com
 Specifications are subject to change without notice. ©2020 BHS, Inc. St. Louis, MO. Data Sheet: PL-10100 10/20

