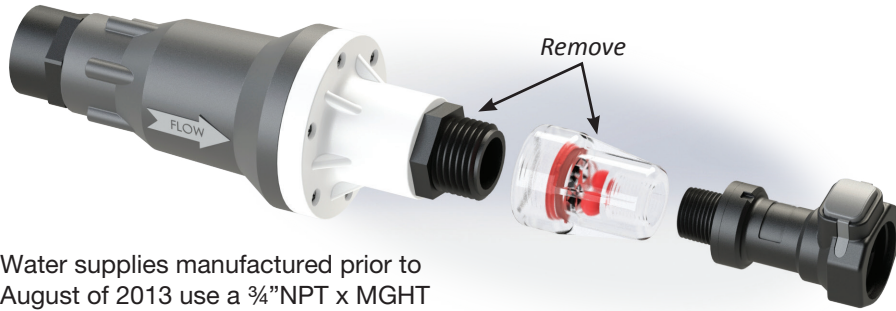
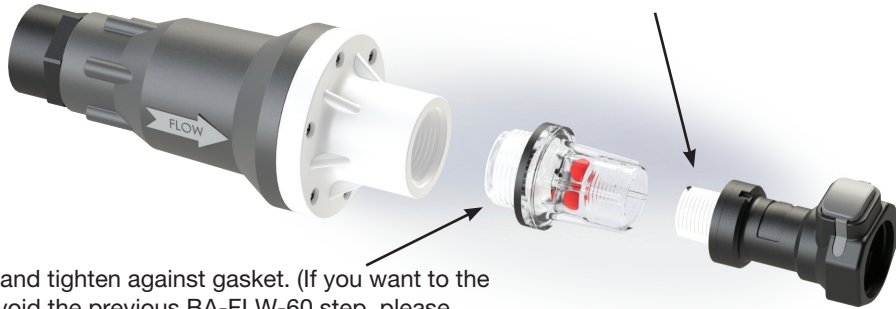


Flow Indicator Assembly Instructions

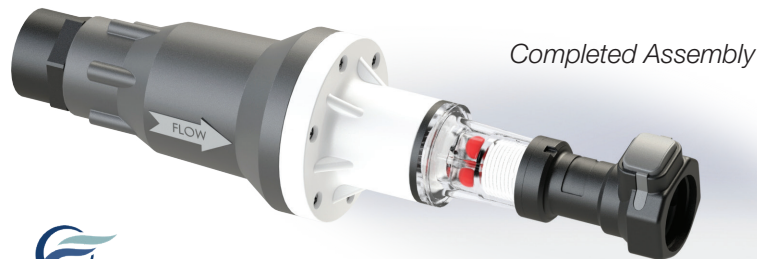


Water supplies manufactured prior to August of 2013 use a $\frac{3}{4}$ " NPT x MGHT fitting that must be removed before installing a BA-FLW-60 or BA-FLW-80 flow indicator.

BA-FLW-60 only: Wrap threads 3 times with a 6" length of .5" PTFE (Teflon style) tape prior to threading into flow indicator. Tape should be wrapped in a clockwise direction and should not overlap or cover the inlet of the coupler. Coupler should be hand tightened only.

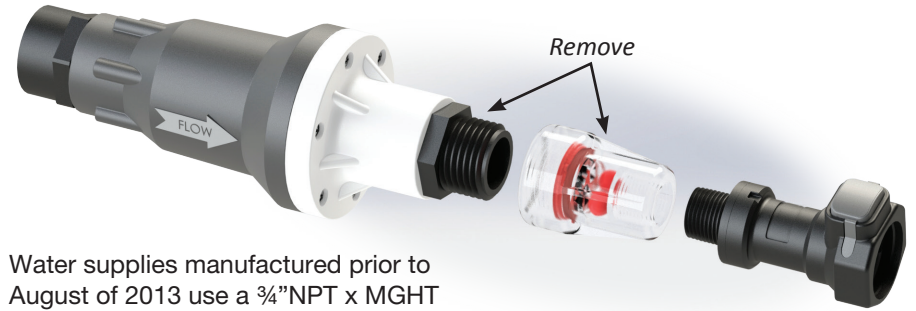


Hand tighten against gasket. (If you want to avoid the previous BA-FLW-60 step, please purchase BA-FLW-80.)



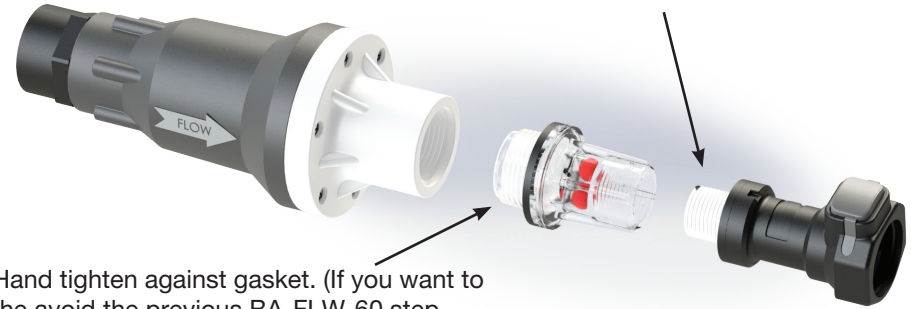
BL-357-0215222

Flow Indicator Assembly Instructions

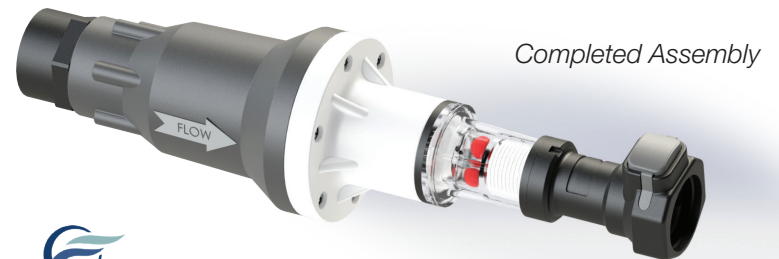


Water supplies manufactured prior to August of 2013 use a $\frac{3}{4}$ " NPT x MGHT fitting that must be removed before installing a BA-FLW-60 or BA-FLW-80 flow indicator.

BA-FLW-60 only: Wrap threads 3 times with a 6" length of .5" PTFE (Teflon style) tape prior to threading into flow indicator. Tape should be wrapped in a clockwise direction and should not overlap or cover the inlet of the coupler. Coupler should be hand tightened only.



Hand tighten against gasket. (If you want to avoid the previous BA-FLW-60 step, please purchase BA-FLW-80.)



BL-357-0215222