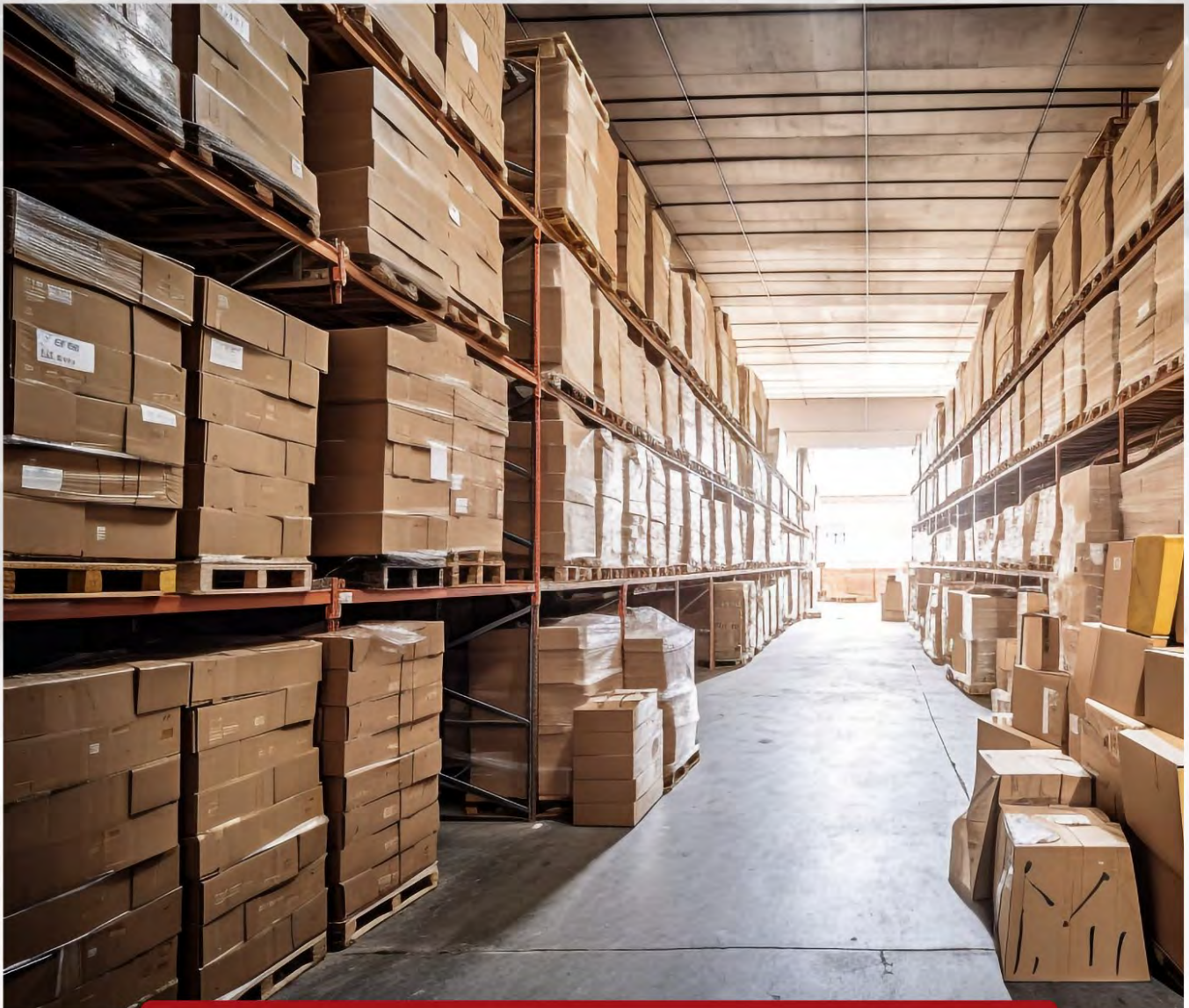


pow[⚡]parts.com
THE MOTIVE POWER ONLINE STORE

**Premier Distributor For The
Material Handling Industry**



2024 PRODUCT CATALOG

Welcome to powRparts, your premier online source for motive power parts and accessories at competitive prices. As a leading distributor for top manufacturers, we offer a vast inventory to minimize downtime for your electric forklift batteries and chargers. With our extensive experience, we make it easy to find the exact part you need. Trust powRparts for quick, reliable shipping across the United States, aiming for a two-day delivery to keep your equipment running smoothly. Explore our selection and benefit from our expertise to maintain your fleet efficiently.

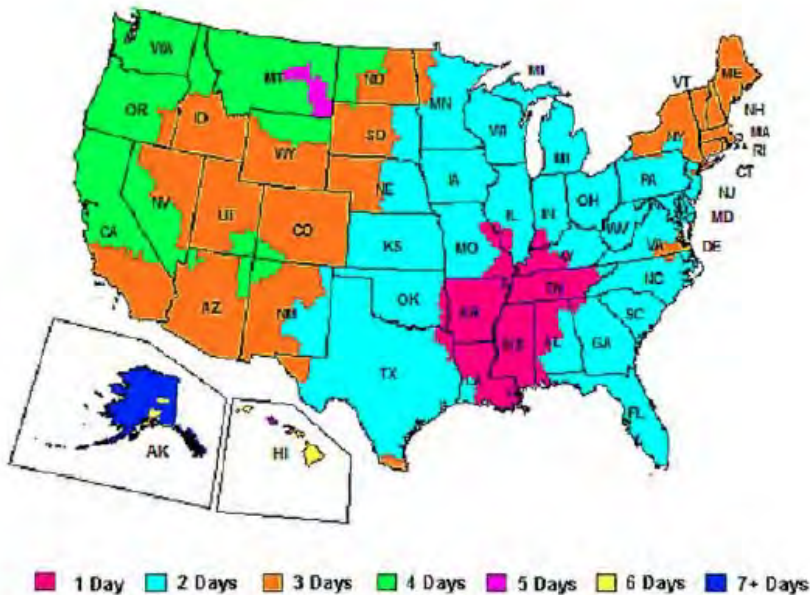
PowRparts' Enterprise Account Program

Opening an Enterprise Account is more than a mere transaction; it's a strategic investment in your business. It streamlines procurement and enhances financial flexibility, contributing significantly to the scalability and efficiency of your operations.

Included advantages:

- Unlock exclusive discounted offers on all equipment and products.
- A direct line of professional support from a dedicated account representative.
- Manage your finances by utilizing net 30 terms.
- Experience the convenience of paying with Purchase Orders (POs).

For more information or to proceed with Enterprise Accounts, email sales@powRparts.com.



The majority of our items are readily available in stock, and any orders prior to 2:00 PM CST are dispatched on the same day via FedEx and UPS.

TABLE OF CONTENTS

BATTERIES

<i>Battery Connectors & Accessories</i>	6-11
<i>Battery Cables</i>	12
<i>Replacement Cells</i>	13
<i>Battery Room Supplies</i>	14-17
<i>Battery Room Tools</i>	18-21
<i>Intercell Connectors & Shrouds</i>	22
<i>Vent Caps</i>	23

BATTERY HANDLING

<i>Charger Mounting & Stands</i>	24
<i>Battery Handling Accessories</i>	25-26
<i>Battery Handling Operator Aboard System & Gantry System</i>	27-28
<i>Transfer Carts & Carriages</i>	29

PRO-FILL & DEEP CYCLE

<i>Pro-Fill Watering Systems & Cell Spacing Guide</i>	30-31
<i>Pro-Fill Parts</i>	32
<i>Deep Cycle Batteries</i>	33
<i>Deep Cycle & Marine Accessories</i>	34-35

TABLE OF CONTENTS

BATTERY WATERING

<i>Stealth Systems & Parts</i>	36-38
<i>Injector & Injector Spider Systems</i>	39-40
<i>Spider/Injector System Parts</i>	41-42
<i>Watering System</i>	43
<i>Maverick & Locomotive Watering Systems</i>	44
<i>SPW Kit Battery Cross Reference</i>	45
<i>SPW Repair Parts & Battery Watering Technologies</i>	46-47
<i>Value Guide & Watering System Parts</i>	48-49
<i>Watering Gun Supplies & Parts</i>	50-51
<i>Stealth System Water Supplies & Parts</i>	52-54
<i>Injector System Water Supplies & Parts</i>	55-58
<i>Pro-Fill Water Supplies & Parts</i>	59-61
<i>Water Supplies</i>	62-63
<i>Water Supplies & Deionizer System Parts</i>	64-65
<i>Watering Gun</i>	66
<i>HydroPure Deionizer System & Parts</i>	67-68
<i>Flow-Rite Deionizer System & Parts</i>	69-70
<i>BWT Deionizer System</i>	71
<i>Electrolyte Level Monitors</i>	72-73

TABLE OF CONTENTS



CHARGERS

<i>Industrial & Automotive Chargers</i>	74
<i>Marine & Golf Cart Chargers</i>	75
<i>Charger Parts & Accessories</i>	76-78
<i>AC & DC Fuses</i>	79

SAFETY & WAREHOUSE

PRODUCTS

<i>Safety Apparel</i>	80
<i>Safety Items & Spill Products</i>	81-82
<i>Warehousing Products</i>	83
<i>Forklift Parts</i>	84

FLEET MANAGEMENT

<i>Flow-Rite Advanced Battery Steward</i>	85
<i>Battery Watering Technologies FRED</i>	86
<i>Philadelphia Scientific IBOS System</i>	87-88

POWRPARTS INFORMATION

<i>Used Equipment</i>	89
<i>PowRparts Information</i>	90-91

SB Battery Connectors



SB Connector- Complete w/ Tips

50 Amp	Color	Part Number
6 ga		6319
10-12 ga.		6319G1
175 Amp		
1/0		6325G1
1/0	Blue	6326G1
1/0	Red	6329G1
1/0	Yellow	6328G1
1/0	Orange	6327G1
350 Amp		
2/0		6320G1
3/0		6320G5
4/0		6320G2
2/0	Blue	6321G1
3/0	Blue	6321G5
4/0	Blue	6321G2
2/0	Red	6322G1
3/0	Red	6322G5
4/0	Red	6322G2
2/0	Yellow	6323G1
3/0	Yellow	6323G5
4/0	Yellow	6323G2
2/0	Orange	6400G1
3/0	Orange	6400G5
4/0	Orange	6400G2
2/0	Green	6324G1
3/0	Green	6324G5
4/0	Green	6324G2



Contact Tip Sets	Part Number
1/0	944
2/0	907
3/0	916
4/0	908



SB 175 Connector Housing	Part Number
	940
Red	949
Blue	941
Yellow	943
Orange	942



SB 350 Connector Housing	Part Number
	906
Red	913
Blue	912
Yellow	914
Orange	932
Green	931

SB Battery Connectors Accessories

Protective Cap



Protective Cap	Part Number
50 amp	126401
175 amp	126402
350 amp	126403

SB Safety Boots



SB Safety Boot	Part Number
50 amp Boot	126411
175 amp Boot	126412
350 amp Boot	126413

SB Connector Lockout



Connector Lockout	Part Number
175 amp	175- Lockout
350 amp	350- Lockout

175/350 Handle



Handle	Part Number
175 amp /350 amp	995

Connector Lockbox



Lockbox	Part Number
175 amp /350 amp	126207

Cable Clamp



Cable Clamp	Part Number
175 amp	945
350 amp	996G1

SB Battery Connectors Accessories (cont.)

SB Steel Handle Kit



Steel Handle	Part Number
175 amp /350 Amp	175-350H

SB Red Mounting Bracket



Mounting Bracket	Part Number
SB 175A	175M
SB 350A	350M

Fusion Contact Tip Set



Tip Size	Part Number
1/0	121107
2/0	121108
3/0	121109
4/0	121110

SB Locking Handle



Handle	Part Number
175 amp	175L
350 amp	350L

Connector Lockout



SB/SBX Lockout	Part Number
SB 175/350A	10-410
SBX 175/350A	10-413

Lock Out/Lock Together



SB Lock out	Part Number
175 amp	10-411
350 amp	10-412

SBX Battery Connectors



Contact Tip Sets	Part Number
1/0	6384G1
2/0	6354
3/0	6355
4/0	6356

SBX Connector- Complete

	Color	Part Number
175 Amp		
1/0	Grey	6374G1
1/0	Blue	6375G1
1/0	Red	6379G1
350 Amp		
2/0	Grey	6345G1
3/0	Grey	6345G2
4/0	Grey	6345G3
2/0	Blue	6346G1
3/0	Blue	6346G2
4/0	Blue	6346G3
2/0	Red	6347G1
3/0	Red	6347G2
4/0	Red	6347G3



Auxiliary Contact Kit	Part Number
175 amp/350 amp	6344



SBX 175 Connector Housing	Part Number
Grey	6380G1
Red	6385G1
Blue	6381G1



SBX 350 Connector Housing	Part Number
Grey	6350
Red	6352
Blue	6351

SBX Battery Connectors Accessories

SBX Safety Boots



SBX Safety Boot	Part Number
175 amp Boot	126416
350 amp Boot	126417

SBX Extraction Tool



Extraction Tool	Part Number
175 amp	969P1
350 amp	970P1

Connector Lockbox



Lockbox	Part Number
175 amp/350 amp	126207

175/350 Handle



Handle	Part Number
175 amp /350 amp	995

Manual Release Handles



Handle	Part Number
Charger/Truck Half	994G1
Battery Half	993G1

Cable Clamp



Cable Clamp	Part Number
175 amp	945G2
350 amp	911G2

DIN Battery Connectors & Accessories

Male Connector with Handle and Tips



Female Connector with Handle and Tips



Manual Release Handles



Amp	Part Number
160 amp/ 50 mm	A16450-1049
320 amp/ 70 mm	A32470-1049
320 amp/ 95 mm	A32495-1049

Amp	Part Number
160 amp/ 50mm	A16550-1049
320 amp/ 70 mm	A32570-1049
320 amp/ 95 mm	A32595-1049

DIN Lockout



Handle	Part Number
Charger/Truck Half	994G4
Battery Half	993G4

DIN Handle and Latching Kit



Handle	Part Number
DIN Lockout	10-414E

Handle	Part Number
DIN Handle Kit	127205

Main Contact Tips



Auxiliary Contact Tips



Pin	Part Number	Socket	Part Number
50 mm	320-1050	50 mm	320-1150
70 mm	320-1070	70 mm	320-1170
95 mm	320-1095	95 mm	320-1195

Aux. Tip	Part Number
6 mm pin	160-12
6 mm socket	160-13
4 mm pin	160-14
4 mm socket	160-15

Battery Cables



Single Straight Leadhead Battery Cable

180° Leadhead		
1/0	S10180-B	S10180-R
2/0	S20180-B	S20180-R
3/0	S30180-B	S30180-R
4/0	S40180-B	S40180-R



Single Offset Leadhead Battery Cable

90° Leadhead		
1/0	S1090-B	S1090-R
2/0	S2090-B	S2090-R
3/0	S3090-B	S3090-R
4/0	S4090-B	S4090-R



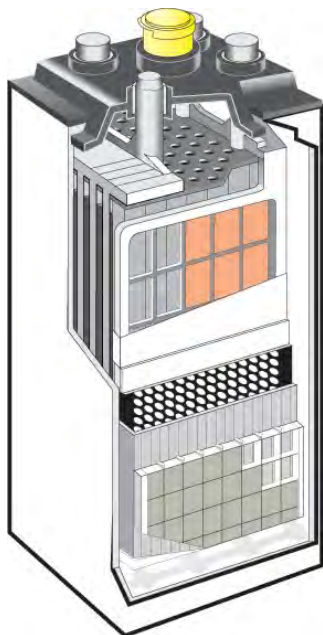
Double Leadhead Battery Cable

3.00" Center to Center		
1/0	10390-B	10390-R
2/0	20390-B	20390-R
3/0	30390-B	30390-R
4/0	40390-B	40390-R

3.75" Center to Center		
1/0	1037590-B	1037590-R
2/0	2037590-B	2037590-R
3/0	3037590-B	3037590-R
4/0	4037590-B	4037590-R

All battery cables are 5 ft. in length.

Replacement Battery Cells



Part Number	Trayed Cell Weight	A.H. Cap 6 Hour Rate	KWH Cap Per Cell
85-7	48	255	0.49
85-9	60	340	0.66
85-11	73	425	0.82
85-13	81	510	0.99
85-15	94	595	1.15
85-17	111	680	1.32
85-19	123	765	1.48
85-21	136	850	1.65
85-23	148	935	1.81
85-25	161	1020	1.98
85-27	174	1105	2.14

125-11	98	625	1.21
125-13	116	750	1.46
125-15	134	875	1.70
125-17	151	1000	1.94
125-19	176	1125	2.18

*Other cell sizes available upon request

Battery Room Supplies

Pallet Strapping Kit



Type	Part Number
Polyester Strap	420590

Expandable Sleeving



Size	Part Number
1/4"	505301
3/8"	505302
1/2"	505303
3/4"	505304
1 1/4"	505306

Leadhead Post Mold



Type	Part Number
Post Mold	213900

Black Battery Reconditioner



Type	Part Number
Black	510441

Deep Cycle Battery Cleaner



Type	Part Number
Cleaner w/Acid Detection	510431

Acid Containment Pallet



Description	Part Number
Acid Containment	510251

Battery Room Supplies (cont.)

Battery Corrosion Preventative



Type	Part Number
Aerosol—White	510411
Aerosol—Red	510401

Neutralizing Acid Absorber



Container	Part Number
2.5 Gallon Jug	853610-003

Battery Cleaner (Quart Bottles)



Type	Part Number
32oz Spray Bottle w/Sprayer (4 pack)	301-4QT

Neutralizing Conditioner



Type	Part Number
5 gallon pail	302-5GL

Cleaning and Neutralizing Wipes



Battery Type	Part Number
Motive Power	304-HDW
Critical Power	304-SHDW

Battery Cleaner (Bulk)



Size	Part Number
5 Gallon Pail	301-5GL
35 Gallon Drum	301-35GL

Battery Room Supplies (cont.)

Hydrometer



Type	Part Number
Plastic barrel	09HYCT

Lead Bar



Size	Part Number
12" length 1 lb.	031-11-01

Puddle Dam



Type	Part Number
3' x 50' roll	510170-050

Disposable Acid Absorbing Mat



Color	Part Number
Pink	MAT309

PVC Acid Syringe



Color	Part Number
15 oz. capacity	AS1

Cell Pressure Tester



Type	Part Number
Pressure Tester	83763

Battery Room Supplies (cont.)

Heat Shrinkable Tubing



Type	Part Number
3/4" red	HS-34-R
3/4" black	HS-34-B
1" red	HS-1-R
1" black	HS-1-B

Cone & Thimble Kit



Type	Part Number
1/0 Crimp	214925
1/0 Fusion	214926
2/0 Crimp	214927
2/0 Fusion	214928

Glass Hydrometer



Type	Part Number
Glass Barrel	HYDM-GLS

Acid-Resistant Cable Tie



100 pack	Part Number
7.4" length acid-resistant cable tie (10 pack)	ST-1

Nylon Split Loom



Size	Part Number
1/4" x 25ft	505101
3/8" x 25ft	505102
1/2" x 25ft	505103
5/8" x 25ft	505104
3/4" x 25ft	505105
1" x 25ft	505106
1 1/4" x 25ft	505107

Polyethylene Split Loom



Size	Part Number
1/4" x 50ft	505201
3/8" x 50ft	505202
1/2" x 50ft	505203
5/8" x 50ft	505204
3/4" x 50ft	505205
1" x 50ft	505206
1 1/4" x 50ft	505207
1 1/2" x 50ft	505208

Battery Room Tools

Cell Pullers



Type	Part Number
Cell Puller	76670

Jar Pullers



Type	Part Number
Jar Puller	75959

Post Saver Drill Bit



Type	Part Number
Post Saver Bit	9942

Lead Head Post Mold



Type	Part Number
Mold	10-435

Heat Gun



Type	Part Number
Economy	50112
Heavy Duty	50127

Cable Stripper



Type	Part Number
Stripper	4215-001

Battery Room Tools (cont.)

Cable Cutters (Large, Imported)



Type	Part Number
Large Cutters	50162

Heavy Duty Cable Cutter



Type	Part Number
250 MCM Hand Held	4285
250 MCM Bench Mount	4285M
500 MCM Hand Held	4287
500 MCM Bench Mount	4287M

Cable Cutter (Hand Held, Imported)



Type	Part Number
Hand Held	14009

Cable Cutter (Hand Held)



Type	Part Number
Hand Held	4275-001

Punch Crimper



Type	Part Number
26" Punch Crimper	50106

Hex Crimper



Type	Part Number
Hex Crimp Jr. 15"	50101
Hex Crimp Sr. 25"	50102

Battery Room Tools (cont.)

Hammer Crimper



Type	Part Number
Hammer Crimp	4266

Hex Crimper



Type	Part Number
Hand Held	4255-001
Hand Held w/ ratchet	4255-001R
Bench Mount	4255-001M
Bench Mount w/ ratchet	4255-001MR

Heavy Duty Ratchet Crimpers



Type	Part Number
PVC Terminals	420189
OEM Terminals	420188
Guardian Terminals	420187

SB/SBX Contact Tip Remover



Type	Part Number
Tip Extractor	113X-Pliers

Vent Cap Removal Tool



Color	Part Number
Yellow	99000F

Digital Volt Meter



Type	Part Number
Volt Meter	303118

Battery Room Tools (cont.)

Wire Stripper



Type	Part Number
21-10 gauge wire	420190

Wire Loom Cutting Tool



Type	Part Number
Loom & Tubing cutter	505900

Heavy Duty Cutter / Crimper



Type	Part Number
Cutter / Crimper	420183

Angled Battery Pliers



Type	Part Number
Angled Pliers	120194

Cutter / Stripper with Pliers



Type	Part Number
Cutter / Stripper	420186

Electrician's Wire Stripper



Type	Part Number
Auto Stripper	420192

Intercell Connectors and Shrouds

Intercell Connectors

ICC Size	Part Number
3" ICC	043-11-01
3 1/8" ICC	044-11-01
3 1/2" ICC	048-11-01
4 1/4" ICC	829781
5" ICC	056-11-01
5 3/4" ICC	829785
17 Plate ICC	829788
19 Plate ICC	829789
21 Plate ICC	829793
23 Plate ICC	829795
25 Plate ICC	829797
27 Plate ICC	829799
29 Plate ICC	829803
31 Plate ICC	829805
33 Plate ICC	IC1061



Intercell Connector Cover

ICC Size	Part Number
3" ICC	201508
3 1/8" ICC	201509
3 1/2" ICC	201510
4 1/4" ICC	201511
5" ICC	201512
5 3/4" ICC	201513
17 Plate ICC	201514
19 Plate ICC	201515
21 Plate ICC	201516
23 Plate ICC	201517
25 Plate ICC	201518
27 Plate ICC	201519
29 Plate ICC	201520
31 Plate ICC	201521
33 Plate ICC	201522

Terminal Shroud



Type / Color	Part Number
Single Straight red	S100SR
Single Straight black	S100SB
Universal 90 red	S100U90R
Universal 90 black	S100U90B
Double Post Red	D375U90R
Double Post Black	D375U90B

Flex Intercell Connectors

Size	Part Number
50mm D50x95	615010095
70mm D70x85	6107010085
95mm D95x95	6109510095
95mm D95x110	6109510110
95mm D95x130	6109510130
95mm D95x150	6109510150
95mm D95x170	6109510170
95mm D95x300	6109510300
95mm D95x190	6109510190



Industrial Battery Vent Caps

Standard 1/4 Turn Vent Cap



Color	Part Number
Yellow	1050-Y

Water Miser Vent Cap



Type	Part Number
Short—17 plate or larger	2000
Tall—15 plate or smaller	2000C

Econ-O-Flip Vent Cap



Type	Part Number
Short—17 plate or larger	2050
Tall—15 plate or smaller	2050C

Flame Arrested Quarter Turn Cap



Type / Color	Part Number
1/4 Turn/White	BA-VNT-002

Push-In Vent Cap (DIN)



Type / Color	Part Number
Push-in / Black	MAA00

Charger Mounting Accessories and Stands

Charger Floor Stand



Single Shelf Width	Part Number
24" wide	CS-24
36" wide	CS-36
72" wide	CS-72

Charger Wall Brackets (Set)



Paint Color	Part Number
Standard Yellow	CWB-Y
Black	CWB-BLK
None-Galvanized	CWB

EV Charger Pedestal Kit



Type	Part Number
Single Mount	CSEV-KIT-1
Dual Mount	CSEV-KIT-2

Single Charger Stand Kit for Wall Mount Chargers



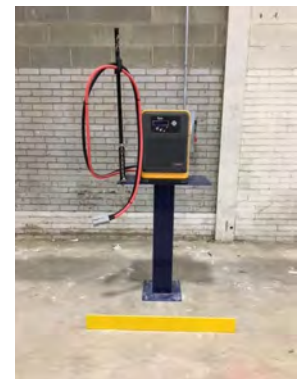
Type	Part Number
Kit with Pogo Stick Cable Retractor	CS-VHK-1
Kit with Magnet Mounts	CS-VHK-1-M

Dual Charger Stand Kit for Wall Mount Chargers



Type	Part Number
Kit with Pogo Stick Cable Retractor	CS-VHK-2
Kit with Magnet Mounts	CS-VHK-2-M

Pedestal Charger Stand



Type	Part Number
Single Stand	Impaq-S
Dual Stand	Impaq-D

Battery Handling Accessories



Battery Lifting Beam

This Battery Lifting Beam is made of hardwood construction and provides a convenient way to handle industrial batteries. Various models and hook options available with a 45" or 52" overall length.

Type	Part Number
6000 lb. Capacity	BLB-6000



Fork Attachment

The fork attachment slides securely onto lift truck forks and offers a low cost solution that is ideal for maintenance tasks on vertical extraction forklift battery fleets. It can lift loads up to 6000 lbs. and is equipped with a 48" securing chain .

Type	Part Number
Fork Attachment	FA-6



Battery Lifting Sling

- Polyester sling webbing
- Vinyl coated hooks (prevent scratching)
- Hooks facing outward for easy 1 person use
- 12" lifting round ring with protector pads for wear and tear
- Manufacturer tag with 360° stitching + clear plastic cover for extended wear durability
- 2" Wide 5' Length

Rating	Part Number
5000 lb.	BATTSLING

Battery Handling Accessories (cont.)



Battery Roller Stands

- Compartment width options: 12" to 42" wide
- 2, 3, 4, and 6 compartment styles on most models
- 40" standard depth
- Available with or without a charger shelf
- +/- 0.5" adjustable legs for added convenience
- Spark-proof, poly sleeved rollers reduce corrosive build-up



Battery Service Stand

- Provides a convenient place to temporarily store a battery
- Provides 360 degree access making it perfect for spot cleaning
- Compartment width options: 15" to 30" wide
- 40" standard depth
- +/- 0.5" adjustable legs for added convenience
- Spark-proof, poly sleeved rollers reduce corrosive build-up



Single Level System Stand

- Drip pan kits available as an added feature
- Compartment width options: 12" to 42" wide
- 2, 3, 4, and 6 compartment styles on most models
- 40" standard depth
- Available with or without a charger shelf
- Welded Feet
- Spark-proof, poly sleeved rollers reduce corrosive build-up

Battery Handling Operator Aboard System

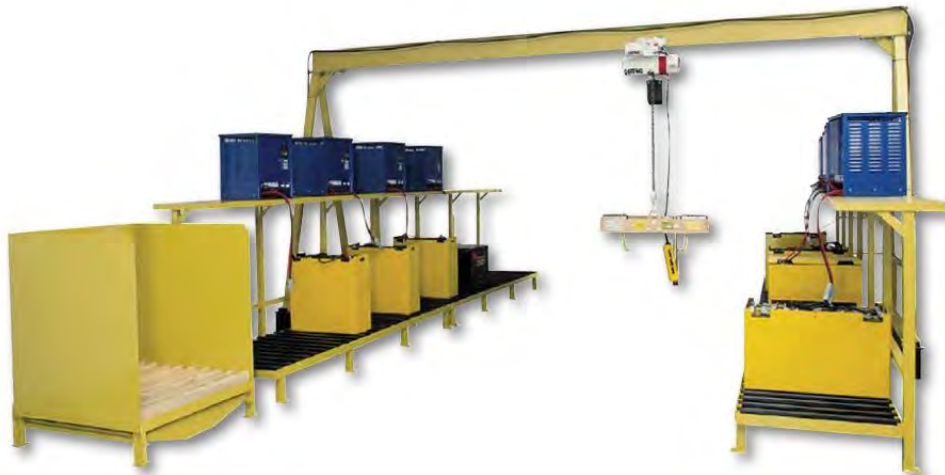


Contact us about your Battery Handling needs. We offer wide ranges of systems from single level up to quad stack systems. Each operator aboard battery extraction system is custom designed to meet the customers wants and needs.

Features & Benefits

- Heavy-duty steel frame
- Low maintenance design reduced preventative maintenance intervals
- No exposed components for added safety
- Durable, powder coat epoxy finish resists acid and scratches
- Manual control of hydraulics for easy operation
- Quiet running dual floor drive system provides positive traction on wet or dry surfaces.
- Four lift cylinders with four-point equalization assures smooth and level vertical movement of roller bed.
- Hydraulic rollers for easy battery transfer

Battery Handling Gantry System



Gantry Cranes provide safe and easy vertical extraction for most standard lift truck batteries. Gantry systems work well for customers that do not have side extraction option on their current forklifts but still need to change out batteries. This system is expandable as your business grows.

Features & Benefits

- Provide for a safe and easy vertical extraction for most standard lift truck batteries
- Modular design allows for easy system expansion
- A Variety of beam spans and capacities are available for specific applications
- Large swivel casters are standard to allow for easy mobility of the entire gantry crane
- High 10' under beam clearance is standard on all units
- Cable festoon kit keeps cables secure during operation of manual trolley

Battery Transfer Carts & Carriages



Automatic Transfer Carriage attaches to an existing pallet jack truck. This can help a customer efficiently change out batteries. Standard industrial components are utilized in the design allowing for local parts availability. While simple center mounted controls allow for easy operation from left, right or rear of changer. Ten rollers are standard and help with wear and load distribution.

Walkie Transfer Carriage has a heavy-duty frame construction built to handle today's demanding environments. Easily mountable to a powered pallet jack. Large 2.4" diameter rollers are standard on WTC's. The hand wheel makes the job easier for push / pull of the extractor arm.



Battery Transfer Carriage provides safe and easy, low cost battery handling extraction. Versatile standard adjustment allows battery extraction from most battery compartments. The BTC comes with many options ranging from all manual to all electric components making it customizable to customer wants and needs.

Flow-Rite Pro-Fill Deep Cycle Watering System



	Part Number	Description
12 Volt Systems	BG-U12V-1A	12 volt kit for (2) 6V batteries with 2.7 inch cell spacing, rigid manifold
	BG-U12V-1K	12 volt kit for (1) 12V Crown battery with 2.7 inch cell spacing, rigid manifold
	BG-U12V-4A	12 volt kit for (2) 6V batteries with non standard spacing, no manifold
	BG-U12V-7A	12 volt kit for (2) 6V batteries with non standard spacing, flexible manifold
24 Volt Systems	BG-U24V-1A	24 volt kit for (4) 6V batteries with 2.7 inch cell spacing, rigid manifold
	BG-U24V-1K	24 volt kit for (2) 12V Crown battery with 2.7 inch cell spacing, rigid manifold
	BG-W24V-1	24 volt kit for pallet jack with (4) 6V batteries with 2.7 inch cell spacing
	BG-U24V-4A	24 volt kit for (4) 6V batteries with non standard spacing, no manifold
	BG-U24V-7A	24 volt kit for (4) 6V batteries with non standard spacing, flexible manifold
	BG-U24V-7J	24 volt kit for (4) 6V "Trojan Plus" series batteries, flexible manifold
36 Volt Systems	BG-U36V-1A	36 volt kit for (6) 6V batteries with 2.7 inch cell spacing, rigid manifold
	BG-U36V-1K	36 volt kit for (3) 12V Crown battery with 2.7 inch cell spacing, rigid manifold
	BG-U36V-4A	36 volt kit for (6) 6V batteries with non standard spacing, no manifold
	BG-U36V-7A	36 volt kit for (6) 6V batteries with non standard spacing, flexible manifold
	BG-U36V-7J	36 volt kit for (6) 6V "Trojan Plus" series batteries, flexible manifold
48 Volt Systems	BG-U48V-1A	48 volt kit for (8) 6V batteries with 2.7 inch cell spacing, rigid manifold
	BG-U48V-1K	48 volt kit for (4) 12V Crown battery with 2.7 inch cell spacing, rigid manifold
	BG-U48V-4A	48 volt kit for (8) 6V batteries with non standard spacing, no manifold
	BG-U48V-5A	48 volt kit for (6) 8V batteries with 2.3 inch cell spacing, rigid manifold
	BG-U48V-6A	48 volt kit for (6) 8V batteries with 2.5 inch cell spacing, rigid manifold
	BG-U48V-7A	48 volt kit for (8) 6V batteries with non standard spacing, flexible manifold
	BG-U48V-7J	48 volt kit for (8) 6V "Trojan Plus" series batteries, flexible manifold
	BG-U48V-8J	48 volt kit for (4) 12V "Trojan 1275 Plus" series batteries, flexible manifold
	BG-U48V-BA	48 volt kit for (6) 8V batteries with non standard spacing, flexible manifold

Pro-Fill System Cell Spacing Guide

6 Volt Batteries				
Battery Brand	Model #	Cell Spacing	Manifold (p/n code)	Valve Style (p/n code)
Canadian Energy	CPGC2-235	2.7	1	A
Continental	2GC-110	2.7	1	A
Crown	CR-205, CR-220, CR-235, CR-260	2.7	1	A
Deka (Pro Master)	GC25, GC12, GC10, GC45	2.7	1	A
Deka (Pro Master)	8L16	Varies	Swivel tee (4)	A
Duracell Ultra (Batteries Plus)	SLIGC110, SLIGC115, SLIGC125, SLIGC145UT	2.7	1	A
Energizer (Sam's Club)	GC2, EGC2	3.3	7	A
Interstate	GC2, GC2-ECL-UT	2.7	1	A
Interstate	Workaholic	Other	Swivel tee (4)	A
Rolls Surrette	S6 L16, S6 L16-HC, S6 L16-SC, S6 L16-EX, 6 FS L16, 6 FS L16-HC, S6 GC2, S6 GC2-HC, S6 145, 6 FS 145, 6FS GC, 6FS GC-HC, 6FS GC-SC, 6 FS 250-SC, S6 305, 6 FS 305-HC, 6 FS 305-SC	2.7	1	A
Rolls Surrette	S6 250	Other	4	A
Trojan	T105, T125, T145, T605	2.7	1	A
Trojan	J250P, J305H-AC, J305P-AC, L16P, T105+, T125+, T145+, L16P-AC, SPRE 12 225, SPRE 06 255, DC-500ML, J185P-AC, 18DC-500ML, J150+	Other	7	J
U.S. Battery	1800 XC2, 2000 XC2, 2200 XC2, 125 XC2, 145 XC2, 250E XC2, 250 XC2, 250HC XC2, 305E XC2, 305 XC2, 305HC XC2, L16E XC2, L16 XC2, L16HC XC2	2.7	1	A

8 Volt Batteries				
Battery Brand	Model #	Cell Spacing	Manifold (p/n code)	Valve Style (p/n code)
Centennial	Golf Car	2.5	6	A
Commander	C8VGC	2.5	6	A
Crown	CR-150, CR-165, CR-190 (Post-June 2022)	2.3	5	A
Crown (Legacy)	CR-150, CR-165, CR-190 (Pre-May 2022)	2.5	6	A
Deka	GC8V	2.5	6	A
Duracell Ultra (Batteries Plus)	GC8V	2.5	6	A
Energizer (Sam's Club)	GC8V	2.5	6	A
GNB	GC8V	2.5	6	A
Interstate	GC8-HLC-UTL	Other	B	A
Rocket, Longest	8190	Other	B	A
Rolls Surrette	8 FS GC, 8 FS GC-HC	2.5	6	A
Trojan	T-875	2.3	5	A
U.S. Battery	US 8VGC	2.5	6	A

12 Volt Batteries				
Battery Brand	Model #	Cell Spacing	Manifold (p/n code)	Valve Style (p/n code)
Continental	2GC-1275	2.7	1	A
Crown	CR-GC150, CR-GC155	2.7	1	K
Deka	GC12T	2.7	1	A
Deka	9C12	Other	C	A
Interstate	GC12	2.7	1	A
Rocket, Longest	12165 (Straight)	Other	8	J
Rocket, Longest	12165 (Chevron)	2.7	1	A
Rolls Surrette	S12 185, 12 FS 185-HC, 12 FS GC-HC, S12 GC	other	4	A
Trojan	1275, J185G	2.7	7 / 2 pcs.	J
Trojan	T-1260+, T-1275+, J150+, J185P, J185H, J185P-AC, J200	Other	8	J
U.S. Battery	12VE XC2, US 185 XC2, US 185E XC2, US 185HC XC2	2.7	1	A
U.S. Battery	12VRX XC2	Other	C	J

Flow-Rite Pro-Fill Repair Parts

Pro-Fill Valve



Description	Part Number
Pro-Fill Valve	BA-Y7A-10

**Manifold for 8v battery w/
2.3" cell spacing**



Description	Part Number
Manifold	BA-120-BLK

**Manifold for 6V battery
w/ 2.7" cell spacing**



Description	Part Number
Manifold	BA-121-BLU

**Manifold for 8v battery w/
2.5" cell spacing**



Description	Part Number
Manifold	BA-122-RED

**Flexible Manifold, 2.6" to 3.5"
Spacing (6V)**



Description	Part Number
Manifold	BA-127-FLEX

**Flexible Manifold, 2.3"
to 2.5" spacing (8V)**



Description	Part Number
Manifold	BA-129-FLEX

Quick Coupler



Description	Part Number
Coupler	BA-QDV-505

Swivel Tee



Description	Part Number
Swivel Tee	BA-142

Tubing



Description	Part Number
1/4" Tubing	BD-T14

Call for other replacement parts.

Deep Cycle Batteries

powRparts offers a full line of deep cycle, marine, scrubber, and AGV batteries. Whether it's a small 6V battery for your golf cart or a large Group 31 battery for your boat, we have you covered!

6V Deep Cycle Battery



8V Deep Cycle Battery



12V Deep Cycle Battery



Model	Part Number
6 Volt	XLD6V

Model	Part Number
8 Volt	XLD8V

Model	Part Number
12 Volt	XLD12V

24V Lithium Pallet Jack Battery



Model	Part Number
24V	XLD6V

48V Lithium Golf Cart Battery



Model	Part Number
48V	XLD8V

Deep Cycle and Marine Accessories

Automotive Battery Rack



Portable Power Pack



Battery Filler Jug



Description	Part Number
Rack	BS-ABR-C

Model	Part Number
Rescue 950	604051

Description	Part Number
2 quart jug	120161

Flow-Rite Hand Pump



Top Post to Stud Marine Terminal



Top Post Rigid Battery Cap



Description	Part Number
Pro-Fill/Qwik Fill Water Supply	BA-MS-634

5/16" Connector	Part Number
Positive	5013P
Negative	5015N

Polarity	Part Number
Red	501010
Black	501011

Deep Cycle and Marine Accessories (cont.)

Top Post Battery Strap



Description	Part Number
Black Strap	50169

Automotive Battery Cleaner



Description	Part Number
Spray Bottle	510156

Deep Cycle Battery Tray



Batteries Stored	Part Number
Single	120187
Multiple	120221

**Qwik Fill Watering System-
Marine Batteries**



Description	Part Number
One Battery Kit	QF-1010
Two Battery Kit	QF-1020
Three Battery Kit	QF-1030

Heavy Duty Battery Box



Description	Part Number
Holds (2) 6V side to side	GC-C
Holds (2) 6V end to end	GCE-G
Holds (4) 6V	GCQ-G
Holds (1) 8V	8D-G

Philadelphia Scientific Stealth System



Stealth Slim System



Stealth Barbed System

•**One size fits all:** Multiple float valve sizes are not needed, and all cells are filled to the appropriate level.

•**Instant tubing installation:** Unique push-fit tubing ports make tubing installation fast, easy and secure. Secure tubing by simply pushing tubing into ports. Tubing is released by pushing on the white collar piece.

•**Lowest profile:** At only 0.6 inches/15mm high, it is the lowest profile float valve watering system on the market.

•**Wide range of operating pressure:** it operates with a pressure range of 3 to 45 psi / 0.2 – 3.0 BAR

•**Snap-fit base:** just snap the float valve into the vent well - no separate adapter is required. The valve can rotate for easy tube alignment.

•**Abuse-resistant tubing:** The system’s tubing resists kinks or crushing. With a small bend radius, it fits even the smallest cells easily, including 5 and 7 plate batteries.

•**Integrated float guard:** This protective design eliminates the risk of moss-shield interference with the float.

•**Highly visible fill level indicator:** The indicator is visible from the top and side.

Slim System	Part Number
12 cell (24v)	FLT-KS12
18 cell (36v)	FLT-KS18
20 cell (40v)	FLT-KS20
24 cell (48v)	FLT-KS24
40 cell (80v)	FLT-KS40

Stealth Barbed System	Part Number
12 cell (24v)	FLT-KB12
18 cell (36v)	FLT-KB18
20 cell (40v)	FLT-KB20
24 cell (48v)	FLT-KB24
40 cell (80v)	FLT-KB40

Stealth System Repair Parts

Replacement Collars



PhotoRoom®

Description	Part Number
Collars	INJ-608

Tubing Cutter



Description	Part Number
Tubing Cutter	FLT-093

Input Filter w/ Collar



Description	Part Number
Input Filter w/ Collar	FLT-104

Input Coupling & Filter Assy.



Description	Part Number
Input Coupling & Filter Assy	FLT-099

End Plug



Description	Part Number
End Plug	FLT-105

DIN Vent Adapter



PhotoRoom®

Description	Part Number
DIN Vent Adapter	FLT-030

All items can be purchased individually or in bulk.

Stealth System Repair Parts (cont.)

Input Coupling



Description	Part Number
Input Coupling	FLT-068

Filter, Barbed



Description	Part Number
Barbed Filter	FLT-104

1/4" OD Tubing



Description	Part Number
1/4" Tubing	FLT-108

Stealth Valve



Description	Part Number
Slim Valve	FLT-LS1
Barbed Valve	FLT-BL1

Collar Installation Tool



Description	Part Number
Collar Installation Tool	INJ-601

Gripper



Description	Part Number
Gripper	ACC-071

All items can be purchased individually or in bulk.

Philadelphia Scientific Injector System

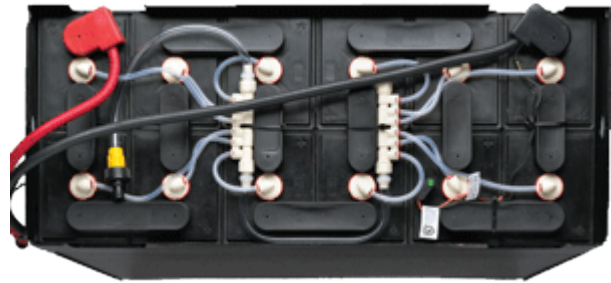


SPW system	Part Number
6 cell (12v)	INJ-S6
12 cell (24v)	INJ-S12
18 cell (36v)	INJ-S18
20 cell (40v)	INJ-S20
24 cell (48v)	INJ-S24

- Very fast operation:** An average industrial truck battery can be filled, with precise level control, in less than 15 seconds. Yet the system is gentle. The secret is parallel filling, made possible by the unique low-friction tubing and pressurized water supply.
- Compact:** A very low profile allows fitting on to almost any battery. Injectors can snap in and out to allow inspection of electrolyte levels and specific gravities.
- Rugged:** Tough enough to survive impacts, abuse and extremes of battery temperatures. There are no exposed parts to break off even when an Injector is removed from a cell. This makes the Water Injector System ideal for rapid or opportunity charge applications.
- True level sensing mechanism.** Needs no submergence to sense level as a float does. Can work right down to the top of the separators. Will not fail if it touches cell components.
- The only single point watering system to allow convenience filling.** The Water Injector System has the unique ability to be used to fill a battery regardless of state of charge. In conventional charging applications, the Water Injector System is precise enough to allow filling before or after charge. For rapid or opportunity charge applications watering should only be done after the weekly equalization charge.
- No-freeze tubing:** The surplus water drains from the tubing into cells after filling is complete. This makes the system perfect for use in cold storage facilities and other freezing environments.
- 2-Stage Filtration:** In addition to the filter screen in the water tubing, each Injector has its own individual filter.
- 5 Year warranty:** Philadelphia Scientific warrants its Water Injectors against defects in materials and workmanship for a period of 5 years from the date of sale by Philadelphia Scientific.

Can be ordered pre-punched or semi-assembled.

Philadelphia Scientific Injector Spider System



The Water Injector *Spider* System was designed for all batteries, but is ideal for small batteries (5, 7 & 9 plate cells) where traditional single point watering systems are hard to fit. It is also perfect for self-installation where the battery size or layout is not known in advance and is a convenient alternate to our Semi Assembled option. It is convenient to keep in the shop or on a service van for last minute installations.

The Water Injector *Spider* System is every bit an Injector - it delivers the legendary speed of fill and reliability of the standard Water Injector System, but employs many convenience features in its design. Small diameter flexible tubing (that is crush and kink resistant) makes fitting onto a crowded battery top easy, push fit tubing ports allow for quick and easy installation, and the central manifold can be tied down on the battery top to prevent pulled tubing problems. The system must be used with our factory authorized Injector Water Supplies to ensure proper performance and our famous 15-second fill.



SPW system	Part Number
6 cell (12v)	INJ-LP6
12 cell (24v)	INJ-LP12
18 cell (36v)	INJ-LP18
20 cell (40v)	INJ-LP20
24 cell (48v)	INJ-LP24

Spider/Injector System Repair Parts

Tubing Cutter



Description	Part Number
Tubing Cutter	FLT-093

1/4" OD Tubing



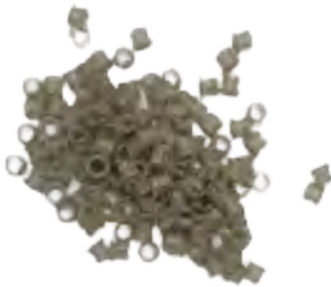
Description	Part Number
1/4" Tubing	FLT-072

1/2" OD Tubing



Description	Part Number
1/2" Tubing	INJ-198

Replacement Gripper



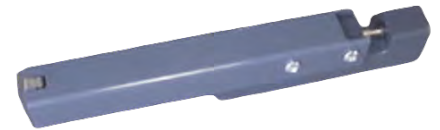
Description	Part Number
Gripper	ACC-071

Ratchet Clamp



Description	Part Number
Ratchet Clamp	INJ-212

Tubing Punch



Description	Part Number
Tubing Punch	INJ-311

Repair Coupling w/Collar



Description	Part Number
Repair Coupling	INJ-465

Collar Installation Tool



Description	Part Number
Collar Installation Tool	INJ-601

Collar



Description	Part Number
Collar	INJ-608

All items can be purchased individually or in bulk.

Spider/Injector System Repair Parts (cont.)

Wye Fitting w/ Collar



Description	Part Number
Wye Fitting	INJ-615

Spider 6-Port Manifold



Description	Part Number
Manifold	INJ-670

ClampLock Injector



Description	Part Number
ClampLock Injector	INJ-CL1

Quick-Connect



Description	Part Number
Quick Connect	INJ-CP

Flow Checker



Description	Part Number
Flow Checker	INJ-FC

Water Injector



Description	Part Number
Injector	INJ-L1

Spider Injector



Description	Part Number
Spider Injector	INJ-LP1

Terminating Injector



Description	Part Number
Terminating Injector	INJ-TL1

Quarter Turn Adapter



Description	Part Number
Adapter	INJ-656

All items can be purchased individually or in bulk.

Flow-Rite Millennium Watering System



The Millennium Evo Battery Watering System makes the difficult task of watering industrial batteries elementary. It consists of automatic shut-off valves, interconnected with tubing, that replace the existing vent caps. A quick coupling allows the system to be connected to a water supply. Once connected, water flows into each cell until it reaches the correct level. A flow indicator built into the water supply tells the operator when filling has been completed. The entire process takes just 30 seconds per battery.

SPW System	Yellow Valve	Black Valve	Red Valve	White Valve
12 cell (24v)	BK-1C0-101-512	BK-1C0-201-512	BK-1C0-301-512	BK-1C0-401-512
18 cell (36v)	BK-1C0-101-518	BK-1C0-201-518	BK-1C0-301-518	BK-1C0-401-518
20 cell (40v)	BK-1C0-101-520	BK-1C0-201-520	BK-1C0-301-520	BK-1C0-401-520
24 cell (48v)	BK-1C0-101-524	BK-1C0-201-524	BK-1C0-301-524	BK-1C0-401-524
40 cell (80v)	BK-1C0-101-540	BK-1C0-201-540	BK-1C0-301-540	BK-1C0-401-540

SPW System	Douglas (35P) Valve	Maverick	GNB	Orange Valve
12 cell (24v)	BK-2C0-501-512	BK-1G0-V00-512	BK-1C0-G00-512	BK-1C0-901-512
18 cell (36v)	BK-2C0-501-518	BK-1G0-V00-518	BK-1C0-G00-518	BK-1C0-901-518
20 cell (40v)	BK-2C0-501-520	BK-1G0-V00-520	BK-1C0-G00-520	BK-1C0-901-520
24 cell (48v)	BK-2C0-501-524	BK-1G0-V00-524	BK-1C0-G00-524	BK-1C0-901-524
40 cell (80v)	BK-2C0-501-540	BK-1G0-V00-540	BK-1C0-G00-540	BK-1C0-901-540

Flow-Rite Maverick and Locomotive Watering Systems



The Flow-Rite Maverick system is an innovative valve that has been engineered to work ideally in opportunity charge applications. From shift changes to meal breaks, the Maverick valve will seamlessly allow for batteries to be used in the same equipment and avoid having to swap out batteries. All Maverick components, including the tubing, are acid, temperature, and impact resistant to withstand the harsh environment found inside and on top of the battery.

SPW System	Maverick
12 cell (24v)	BK-1G0-V00-512
18 cell (36v)	BK-1G0-V00-518
24 cell (48v)	BK-1G0-V00-524
Replacement Valve	BA-G15-V0



Flow-Rite Locomotive Battery Care

Kit Size	Part Number	Mfg.
4 Cell	BK-7OS-K00-504	GNB/Surrette/ East Penn
16 Cell	BK-7OR-K00-516	Moura Battery
16 Cell	BK-7OR-M00-516	GNB/Surrette/ East Penn
Uncut Tubing– 16 Cell	BK-7O9-K00-516	GNB/Surrette/ East Penn



Flow-Rite SPW Kit Battery Cross Reference

Battery Brand	Model #	Valve Length	Maverick Compatible	Cap Style
Battery Builders	All	Black	TBD	Bayonet
Bulldog	All	Black	TBD	Bayonet
Crown	85S, 105MX	Black	●	Bayonet
Crown	125S, 145MX	Black		Bayonet
Deka	D-Series, MaxPower(All)	Orange	●	Bayonet
Douglas	All	Black		35P
EnerSys	E55L, E75L, E85, E90, E100, E110, E100X, 55GL, 75GL, 75G, 85G, 85P, 100G, 100P	Black		Bayonet
EnerSys	E140, E140X, E155, 130A, E85D, E90D, E100D, E125, E125D, 125G, 125P	Red		Bayonet
EnerSys	E85, E90, E100, E100X, 85G, 85P, 100G, 100P, E140, E140X, E155, 130A, E85D, E90D, E100D, E125, E125D, 125G, 125P	Maverick	●	Bayonet
Eternity Technologies	E95, E135, E90, E125	White		Bayonet
Eternity Technologies	EC105, EC150, E100, E140	Black		Bayonet
GNB	Flat Plate, Liberator, and Tubular	GNB	TBD	Bayonet
Hawker	All	Black	●	Bayonet
Hup	100P	Black	●	Bayonet
Hup	125P	Red		Bayonet
Hup	85P	Red		Bayonet
Interstate Powercare	All	Black		Bayonet
Powerflow	All	Black		Bayonet
Railroad / Stationary	Locomotive Starting Batteries and Some Stationary	XL Black	●	Winged Bayonet
Reaco	All	Black	●	Bayonet
Sunlight	90 AQ, 100 AQ, 140 EC	Orange		Bayonet
Sunlight	125 AQ,	Red	*	Bayonet
Sunlight	100 EC	Yellow		Bayonet
Sunlight	PzB55, PzS60, PzB65, PzS80	Black	*	35P
Sunlight	PzS90, PzS105, PzS115, PzS125, PzB75, PzB85, PzB100, PzB105	Red	*	35P
Sunlight	PzS140, PzS150	White		35P
Triathlon	90TA, 125TA	White		Bayonet
Triathlon	100TE, 140TE	Black		Bayonet

Please contact customer support for batteries containing plate protectors.

● = Maverick compatible



Valve	Part Number
Black	BA-C10-21
Red	BA-C10-31
White	BA-C10-41
Douglas/DIN	BA-C20-21
Orange	BA-C10-91
Maverick	BA-G15-V0
GNB	BA-C15-G0

Flow-Rite SPW Repair Parts

Quick Coupler



Description	Part Number
Coupler	BA-QDV-505

Swivel Tee



Description	Part Number
Swivel Tee	BA-142

Battery Refill Record



Description	Part Number
Refill Record	BD-BRR

End Cap



Description	Part Number
End Cap	BD-00280

Tubing



Description	Part Number
Tubing/ft.	BD-T14

4 Prong Spanner Tool



Description	Part Number
Spanner Tool	BD-00871

O-Ring for Bayonet Cap



Description	Part Number
O-Ring	BD-00525

O-Ring for Quick Coupler



Description	Part Number
O-Ring	BD-00204

O-Ring for Swivel Tee



Description	Part Number
O-Ring	BD-00202

Call for other replacement parts.

Battery Watering Technologies SPW System



- Low profile design
- Indicator eye is visible from the top and side.
- Tubing barbs eliminates the needs for clamps to make install easy
- Clip in base so there's no twisting to lock in place.
- Encapsulated float to give an added layer of protection and eliminates inference with the moss shield.
- Hydrometer port allows readings without the need to remove the valve.
- The BWT valve never has to be removed to perform maintenance.
- Works with a variety of pressures., 3-35 PSI
- Solid one piece float– cannot absorb water and is acid resistant.

SPW System	TB3.5 Valve	TB4 Valve	TB4.5 Valve	TB5 Valve	TB4WO Valve	DIN Valve
12 cell (24v)	K1200TB3.5	K1200TB4	K1200TB4.5	K1200TB5	K1200TB4WO	K1200TB4.5D
18 cell (36v)	K1800TB3.5	K1800TB4	K1800TB4.5	K1800TB5	K1800TB4WO	K1800TB4.5D
20 cell (40v)	K2000TB3.5	K2000-TB4	K2000TB4.5	K2000TB5	K2000TB4WO	K2000TB4.5D
24 cell (48v)	K2400TB3.5	K2400-TB4	K2400TB4.5	K2400TB5	K2400TB4WO	K2400TB4.5D
40 cell (80v)	K4000TB3.5	K4000-TB4	K4000TB4.5	K4000TB5	K4000TB4WO	K4000TB4.5D

Replacement Valves

Valve	Part Number
Valve 35	VB-TB3.5
Valve 40	VB-TB4
Valve 45	VB-TB4.5
Valve 50	VB-TB5
Valve 55	VB-TB5.5
GNB Valve	VB-TB4WO
DIN Valve (35 mm)	VA-TB4.5



BWT Valve Guide

MANUFACTURER	BATTERY TYPE	VALVE
Battery Builders	FPLM	VB-TB4
	<i>Speak with your Account Manager for details</i>	*VB-TB4WA
Bulldog		VB-TB4
Crown Battery		VB-TB4.5
Deka	D35, D45	VB-TB3.5
	Other D Series	VB-TB4.5
	MaintenanceSaver, MaxPowr	VB-TB4.5
	HydraSaver, FastCharge	VB-TB4.5
Douglas	45DL, 45DLO	VA-TB4.5
	60DL	VA-TB4
	85DL, 85DM, 85DA	VA-TB4.5
	90DL	VA-TB4.5
	100DL, 100DM	VA-TB4.5
	125DL, 125DM, 125DA	VA-TB4.5
	170DL	VA-TB4.5
EnerSys	Workhog® / Loadhog® / Superhog® E55-L, E75-L, E75, E90, E90D, E100, E100D, E100X, E110	VB-TB4
	E125, E125D, E140, E140X, E155	VB-TB5
	The General®/ HUP® 55GL, 75G, 75GL, 85G, 85P, 100G, 100P	VB-TB4
	85P (FC), 125G, 125P, 125P (FC)	VB-TB5
Eternity		VB-TB4.5
GNB	GNB Flat Plate / Titan *mfg before 3/12	VB-GLP
	GNB Flat Plate / Titan *mfg after 4/12	VB-TB4WO
	Tubular HP	VB-TB4WO
	Liberator	VB-TB4WO
Hawker	Water Less®/Powerline®/Top Power®	VB-TB3.5
	Energy Plus™ (L,E,C,X Series)	VB-TB3.5
	<i>Speak with your Account Manager for details</i>	*VB-TB4WA
	Energy Plus™ (K Series)	VB-TBY
	Top Power®	VB-TB3.5
Sunlight		VB-TB4.5
Surrette Battery	5000 Series	VB-TB5SX
	All others	VB-TB5S
Triathlon	AQUAsave 90	VB-TB4.5
	AQUAsave 125	VB-TB4.5
	Enhanced Capacity 100	VA-TB4
	Enhanced Capacity 140	VA-TB4.5

BWT Watering System Repair Parts

Blue Male Connector



Connector	Part Number
6 mm, 1/4"	09MBLU1
10 mm, 3/8"	09MBLU2

Gray BFS Male Connector



Connector	Part Number
6 mm, 1/4"	09GRM6
10 mm, 3/8"	09GRM1

SPW Fill Tube



Filling Tube	Part Number
12 Cell	09FIL12N
18 Cell	09FIL18N
24 Cell	09FIL24N

Blue Dust Cap



Tee	Part Number
6 mm	08T666N

Clampless Tee-6/6/6



Tee	Part Number
6 mm	08T666N

Black Tubing



Connector	Part Number
6 mm, 1/4"	08TUB6BLK

Battery Watering Jumpers



Connectors	Part Number
09MBLU2 to 09GRF1	09MJUMP
09MBLU2 to 09FUM1	09MJUMPF
09GRM1 to 09FUM1	09MCJUMP
09GRM1 to 09FBLU1	09FJUMP
09FUV1 to 09GRF1	09FCJUMP
09FUV1 to 09FBLU1	09FJUMPF

Direct Fill Link Parts



DF72 Parts	Part Number
Threaded Blue QC	09FBLUT3
Flow Indicator	09FWM72A
Handle	GHAN2
Regulator	PRG915
Female QC	L70654
Male QC Adapter	L70655

Call for other replacement parts.

Philadelphia Scientific Watering Gun Supplies

CRT-12V



HydroFill Watering Cart

The HydroFill cart is a 10 US gallon (37.8 Liters) unit that is designed to work with Philadelphia Scientific watering guns. It is a sturdy, easy to transport cart that handles like a hand truck. The HydroFill cart features a 2-wheel configuration that allows for easy maneuverability up stairs and ramps. To use simply fill the tank from any available water source through the large opening. Connect your favorite Watering Gun to the end of the 9 foot (2.7 Meters) hose and then water your industrial battery. The HydroFill cart is DC powered from a sealed cell 12 volt battery that can be charged from any A/C outlet.

Adapter needed if cart is to be used with Stealth/Injector system.

Watering Gun Supplies Repair Parts

Pump, 12 VDC



Description	Part Number
12vdc pump	CRT-040

12 VDC sealed battery



Description	Part Number
12v battery	CRT-095

Hydrofill Output Hose



Description	Part Number
Output Hose	CRT-070

12VDC Repair Kit



Description	Part Number
Switch, Charger Jack, Hose Brackets, and Back Panel	ACC-066

Quick Coupling



Description	Part Number
Quick Coupling	ACC-068

Charger



Description	Part Number
Charger	CRT-149

Philadelphia Scientific Stealth System Water Supplies

Direct Fill Link



FLT-DL

Gravity Tank



FLT-GT

Mobile Watering Cart



FLT-DC12

The FLT-DL is designed to be used with the Stealth Watering System and the existing plumbing in your facility. Simply connect the DirectLink to the wall tap, connect to the Stealth Watering System, wait for the spinner to stop, and disconnect. The unit is comprised of an inline sediment filter, 20 feet (6.1 Meters) of rugged industrial hose, a pressure regulator, a flow indicator (spinner) and a female CPC connection. It requires a plumbing connection to a 3/4" NPT connection. An isolation valve is recommended to be installed at the source.

The FLT-GT is a 5 US Gallon (18.9 Liter) tank that uses gravity to create enough water pressure to operate the Stealth Watering System. The unit is easy to fill from your water source and features a flow indicator and 25-foot (7.6 Meter) hose that attaches to the Stealth Watering System with a rugged connector. The Gravity Tank must be mounted at least 5 feet (1.52 Meters) above the top of the battery.

The FLT-DC12 is a 10 US gallon (37.8 Liters) unit and is designed to work with the Stealth Watering System and easily transports water to your batteries. Fill the tank from any available water source. This sturdy D/C powered watering cart handles like a hand truck. The 12 volt battery can be charged from any AC outlet. Simply connect to the Stealth Watering System and turn on the switch. A flow indicator will tell you when all of the Stealth valves have shut off and it is time to disconnect. The Mobile Watering Cart is supplied with 9 feet of hose (2.7 Meters), a sealed cell 12 Volt battery and a battery charger.

Adapter needed if cart is to be used with a watering gun.

Stealth System Water Supply Repair Parts

12VDC Repair Kit



Description	Part Number
Switch, Charger Jack, Hose Brackets, and Back Panel	ACC-066

Charger



Description	Part Number
Charger	CRT-149

Pump, with Clamps & Elbows



Description	Part Number
Pump	CRT-040

Battery, 12VDC



Description	Part Number
12VDC Battery	CRT-095

Gravity Tank Shelf



Description	Part Number
Mountable Shelf	FLT-018

Adapter needed if cart is to be used with a watering gun.

Stealth System Water Supply Repair Parts (cont.)

Reinforced 20' Hose



Description	Part Number
Hose	FLT-039

Low Pressure Regulator



Description	Part Number
25 PSI Regulator	FLT-060

Replacement Front End



Description	Part Number
Replacement Front End	FLT-071

1/2" OD Tubing



Description	Part Number
1/2" Tubing	INJ-198

Wheel Kit



Description	Part Number
Wheel Kit	INJ-677

Adapter needed if cart is to be used with a watering gun.

Philadelphia Scientific Injector System Water Supplies



HydroCart Max (INJ-HCT)

This 75.7 Liters (20 US gallon) unit easily transports water to your batteries. Fill the tank from any available water source. The HydroCart handles like a hand truck and is powered by any 110 VAC outlet. When the switch is turned on, the pump is activated. Simply connect to the Water Injector System and activate the Instant Valve Pro. A flow indicator will tell you when all of the Injectors have shut off and it is time to disconnect.

The HydroCart Max is supplied with 18 feet (5.5 Meters) of power cord in a retractable cord reel and 15 feet (4.6 Meters) of 5/8" (1.5 Centimeters) high output industrial hose. The submersible pump mounted inside the tank delivers all the pressure and volume required by the Water Injector System.



HydroCart Mini (INJ-MINI)

This 10 US gallon (37.8 Liters) unit combines transportability with value. Designed with small to mid-size applications in mind this smaller version of our HydroCart is the ultimate in convenience. The compact size of the Mini HydroCart is ideally suited to be taken on and off service vans as part of a battery maintenance program.

The Mini HydroCart is supplied with 13 feet (3.9 Meters) of power cord and 10 feet (3.0 Meters) of industrial hose. The submersible pump mounted inside the tank delivers all the pressure and volume required by the Water Injector System.

Adapter needed if cart is to be used with a gun or Stealth System.

Injector System Supplies Repair Parts

Direct Fill Link Hose



Description	Part Number
Direct Fill Link	INJ-DF

Quick Connect Coupling– MxM



Description	Part Number
Coupling– MxM	ACC-039

Tee, 3/4" W/ Regulator,



Description	Part Number
Tee adapter	INJ-618

HydroCart Max Output Hose



Description	Part Number
Output Hose, INJ-HCT	INJ-070

35 PSI Pressure Regulator



Description	Part Number
Regulator	INJ-435

Quick Connect



Description	Part Number
Quick Connect No Check Valve	INJ-527

Adapter needed if cart is to be used with a gun or Stealth System.

Injector System Supplies Repair Parts (cont.)

Pump



Description	Part Number
Pump	INJ-540

Switch Cover Assy



Description	Part Number
Switch Cover Assy	INJ-559

Tank Cap



Description	Part Number
Tank Cap	INJ-562

Instant Valve PRO



Description	Part Number
Instant Valve	INJ-607

Inline Regulator Assy



Description	Part Number
Assembly	INJ-645

Output Hose, INJ-MINI



Description	Part Number
Output Hose	INJ-623

Wheel Kit, Tanker Carts & HCT



Description	Part Number
Wheel Kit	INJ-709

Retractable Cord Reel, INJ-HCT



Description	Part Number
Cord Reel	INJ-711

Switch Cover Assy



Description	Part Number
Switch Cover Assy	INJ-672

Adapter needed if cart is to be used with a gun or Stealth System.

Injector System Supplies Repair Parts (cont.)

Replacement Cap, Rim, and Chain



PhotoRoom®

Description	Part Number
Replacement Cap, Rim, Chain	INJ-674

Red Output Hose



PhotoRoom®

Description	Part Number
Red Output Hose	INJ-676

Wheel Kit. INJ-Mini, CRT-12V, and FLT-DC12



PhotoRoom®

Description	Part Number
Wheel Kit	INJ-677

Flow Checker



PhotoRoom®

Description	Part Number
Flow Checker	INJ-FC

Pressure Tester



Description	Part Number
Pressure Tester	INJ-PG

Stealth System Adapter



PhotoRoom®

Description	Part Number
Injector/Deionizer to Stealth Adapter	FLT-070

Adapter needed if cart is to be used with a gun or Stealth System.

Flow-Rite Millennium/Pro-Fill Water Supplies



Flow Rite Portable Watering Cart, DC Powered BA-MS-115

- ◆ 22 gallon capacity
- ◆ Includes 12v sealed battery and on-board charger to run its pump or can be plugged in and ran on AC power
- ◆ Large refill hole with flip top lid
- ◆ Upright design eliminates a user bending down
- ◆ 9 foot supply hose
- ◆ Dedicated hose wrap notches
- ◆ Easy access spray bottle holders
- ◆ One year manufacturer warranty

Regulated Hose Supply



Hose Length	Part Number
5 ft.	BA-MS-320-05
20 ft.	BA-MS-320-20

Mini Pump



Description	Part Number
Mini Pump, 110v adapter	BA-MS-651

Flow-Rite Gravity Tank



Type	Part Number
Tank, with shelf and auto refill	BA-MS-700
Tank with shelf and no auto refill	BA-MS-702

Flow-Rite Water Supply Repair Parts

Hose End Assembly



Description	Part Number
Hose End Assy	BA-MS-320-00

Flow Indicator, Heavy Duty



Description	Part Number
Heavy Duty with Extension	BA-FLW-85

In-Line Pressure Regulator



Description	Part Number
FGHT x FNPT	BA-003

Flow Indicator



Description	Part Number
3/4" NPT x Female Coupler	BA-FLW-80

Millennium Cart Battery



Description	Part Number
Battery	BD-00607

Flow Indicator



Description	Part Number
3/4" NPT x 3/8" FNPT	BA-FLW-60

Braided Hose



Hose Length	Part Number
5 ft.	BA-T04
20 ft.	BA-T03

Inline Strainer



Description	Part Number
Inline Strainer	BA-019

Purger



Description	Part Number
Purger	BA-051

Call for other replacement parts.

Flow-Rite Water Supply Repair Parts (cont.)

Extension for Flow Indicator



Description	Part Number
Extension	BA-580

Female CPC Output Coupling



Description	Part Number
Coupling	BA-QDV-233

Rocker Switch



Description	Part Number
Switch	BD-00327

Female Coupler, Keyed, 3/8" Barb



Description	Part Number
Female, Keyed, 3/8" Barb	BA-QD-201

Female Coupler, 1/2" Barb



Description	Part Number
Female, 1/2" Barb	BA-QDV-232

Rough Terrain Kit



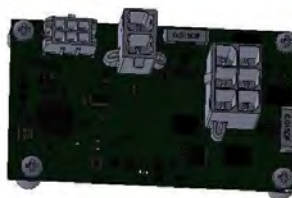
Description	Part Number
Rough Terrain	BA-MS-117

Replacement Pump



Hose Length	Part Number
Pump	BD-00999

Millennium Cart Control Board



Description	Part Number
Board	BD-01017

Outlet Hose Assembly



Description	Part Number
Hose	BA-T14

Call for other replacement parts.

Battery Watering Technologies Water Supplies



9 Gallon Portable Tank	Part Number
Blue Connector	NC5090PN
Grey Connector	NC5090P
Manual Gun	NC5090PN-MAN
FRC Connector	NC5090F

AQUA SUB JR—9 GALLON

The Aqua Sub Jr. is great for small and medium jobs, the two-wheeled configuration handles like a piece of luggage. It rolls easily and its flexibility makes it easy to maneuver. The Aqua Sub Jr.™ is easy to transport and there are no power cords to trip over.

25 Gallon Portable DC Cart	Part Number
Blue Connector	NC5250PN
Grey Connector	NC5250P
Manual Gun	NC5250PN-MAN



AQUA SUB—25 GALLON

The four-wheeled configuration rolls easily and its steel frame makes it extremely durable. With its large opening, the Aqua Sub™ is easy to fill and there are no power cords to trip over.

Battery Watering Technologies Water Supplies (cont.)



25 & 50 GALLON

The Aqua Sub XTREME™ is an AC/DC powered watering cart. The cart is powered by a 12-volt battery with its own on-board charger. The new cart features a space-saving upright design that is easy to maneuver. Cart has connector options of Blue, Grey, Black, and GMAN1 are available for both 25 and 50 gallon.

5 Gallon Gravity Feed Tank



5 Gallon Gravity Tank (Auto Fill)



Gravity Tank Shelf



Connector	Part Number
Blue	NT2000GN
Grey	NT2000G
Black	NT2000GFR

Connector	Part Number
Blue	NT2000AFB
Grey	NT2000AFG

Mount Type	Part Number
Wall Mount	S2000T
Pole Mount	S2000TP

BWT Water Supplies & Deionizer Repair Parts

Direct Fill Link—Blue



Description	Part Number
Blue Connector	DF72

Direct Fill Link—FRC



Description	Part Number
FRC Connector	DF72F

Direct Fill Link—Gray



Description	Part Number
Gray Connector	DF72G

BWT Female Connector



Description	Part Number
1/4" Connector	09FBLU6
3/8" Connector	09FBLU1

BFS Female Connector—Gray



Description	Part Number
1/4" Connector	09GRF6
3/8" Connector	09GRF1

Aqua Sub Pumps



Description	Part Number
1.1 GPM pump	PM5000
2.2 GPM pump	PM50002.2

Threaded Female Connector



Description	Part Number
Threaded Female	09FBLUT3

Flow Indicator



Description	Part Number
Flow Indicator	09FWM72A

Direct Fill Front End



Description	Part Number
Blue	09FRTL72
Gray	09FRTL72G
Stealth	09FRTL72F

BWT Water Supplies & Deionizer Repair Parts (cont.)

Large Replacement Cap



Description	Part Number
Cap	NTSCAP2

Front End replacement w/ 09GRF1



Description	Part Number
Front End	09FILTK

3/18" Barb x 3/4" NPT



Description	Part Number
Elbow	62066

Xtreme Tank Lid



Description	Part Number
Tank Lid	AQXDFP7

Sealed 12v Battery



Description	Part Number
Battery	AQXMU1SLDM33

Xtreme Wheel



Description	Part Number
Back Wheel	AQXW15

Front Wheel



Description	Part Number
Front Wheel	AQXCST3

Blue Hose



Description	Part Number
Per foot	AQXK1156

Inline Strainer



Description	Part Number
Strainer	AQXS12B

Watering Guns



GUN-X watering gun. Simply connect the Battery Watering Gun to a standard water hose or a Deionizer, put the tip of the gun into the cell and squeeze the ergonomic handle. The mechanism will automatically shut off at exactly the right electrolyte level. The reliable Philadelphia Scientific Battery Watering Gun speeds up battery watering, improves filling accuracy, and improves operator safety.

GUN-S watering gun. This GUN-S was developed for watering transparent type stationary batteries only. It operates outside the cell and does not have automatic shutoff. The cone shaped nozzle injects water through funnels of the flame arrestor vents, allowing service without removal of vent caps. Has a manually adjustable flow throttle and includes quick connect fittings.



GUN-XP watering gun. Designed specifically for powRparts.com, simply connect the Battery Watering Gun to a standard water hose or a Deionizer, put the tip of the gun into the cell and squeeze the ergonomic handle. The mechanism will automatically shut off at exactly the right electrolyte level. The reliable Philadelphia Scientific Battery Watering Gun speeds up battery watering, improves filling accuracy, and improves operator safety.

GUN-RR watering gun. This watering gun is made to be used in the railroad industry. The gun does have an automatic shutoff.



HydroPure Deionizer System

Make your own pure water directly from your tap water. The Deionizer reduces the high price of buying bottled water and it's more convenient as well. Each disposable cartridge purifies about 600 gallons of water and the purity light will tell you exactly when the cartridge is used up. Why let impurities in your water reduce the life of your battery, when this system is so easy to use and so cost effective?



- **Large capacity:** The cartridge is over 2 feet, 60cms, long and rated for 600 gallons, 2400 liters, of pure water. Actual output varies with tap water quality.
- **Purity light:** This "magic eye" monitors the conductivity of the output water continuously and signals when it is time to change the cartridge. There is no better purity control available at any price.
- **Pressurized system:** Unlike some lab type systems, the Philadelphia Scientific Deionizer operates at full line pressure. This makes it possible to dispense pressurized, pure water directly from the deionizer.
- **Ready to use:** The system comes with a mounting plate, one cartridge, Purity Light, hose hanger, quick connects, input and output hoses. With the optional Watering Gun, you can fill a battery directly from the Deionizer.
- **Easy installation:** Setting up wall mounted system takes 3 simple steps. Attach the mounting plate to wall with 2 bolts. Connect input hose to any tap with standard hose fittings. Connect Purity Light to the output assembly.
- **Easy cartridge replacement:** Snapping in a new cartridge takes seconds and needs no tools. The exhausted cartridge is non toxic and can be disposed of without difficulty.

Mobile Dual Deionizer Cart



Description	Part Number
Mobile Cart	CRT-143

Nickel Alkaline System



Description	Part Number
Nickel Alkaline	PS-310

HydroPure Deionizer Repair Parts

Deionizer Refill Cartridge



Type	Part Number
Cartridge	PS-600

Purity Light



Type	Part Number
Purity Light	PS-191

Flow Restrictor



Type	Part Number
Flow Restrictor (0.5 GPM)	PS-190

Quick Coupling



Description	Part Number
Quick Coupling	ACC-068

20 ft. Output Hose



Type	Part Number
20 ft. hose	PS-150

10 ft. Input Hose



Type	Part Number
10 ft. hose	PS-140

FLT-070 adapter needed to connect directly to Stealth systems.

Flow-Rite Deionizer System

Maximizes battery life by removing dissolved solids that are present in tap water and can lead to shortened battery life. Economical, the separate bed deionizer uses an ion exchange cartridge filled with non-toxic synthetic resins to remove impurities from your tap water before it enters the battery.

BA-MS-340



- Red / Green water quality light lets you know when cartridges need to be replaced.
- The low pressure bypass ensures that the deionizer will provide enough pressure and flow to operate your single point watering system, even if you forget to change out an old cartridge
- Mounting bracket has built in hose storage bracket
- 20 foot supply hose
- Cartridges can be discarded when replacement is necessary

Deionizer Refill Cartridge



Description	Part Number
Replacement Cartridge	BA-221

Flow-Rite Deionizer Repair Parts

Flow Indicator



Type	Part Number
3/4" NPT x 3/8" FNPT	Ba-FLW-60

Purger



Type	Part Number
Millennium Purger	BA-051

In-Line Pressure Regulator



Type	Part Number
FGHT x 3/4" Female NPT	BA-003

Female Coupler Non Keyed 3/8" Threaded



Description	Part Number
3/8" Threaded Fitting	BA-QDV-231

Flow-Rite Deionizer Hose



Type	Part Number
10' Inlet Hose	BA-T10
20' Outlet Hose	BA-T11

Water Quality Monitor



Type	Part Number
Purity Light	BA-510

BWT Deionizer System

To protect your equipment and extend the life of your batteries, the deionizer kit from Battery Watering Technologies can easily and inexpensively remove harmful impurities from the water. Dissolved impurities in standard tap water will degrade your batteries and decrease battery life and performance over time. The system is cost effective and easy to use.

PW-1800



How much capacity can you get from the cartridge? It depends on the quality of your water. If water has particulates or sediment, a pre-filter is recommended. At three grains per gallon of total dissolved solids you can expect 1000 gallons or 3785.4 liters of capacity. If you want a more exact answer, just send a sample of your water and we can tell you the approximate gallons of capacity you can expect from our deionizer.

Our deionizer comes with an input and output hose. It connects to your choice of Direct Fill Link, Manual Watering Gun, or an approved competitor filling device.

This Water Deionizer is DC powered.

Deionizer Refill Cartridge



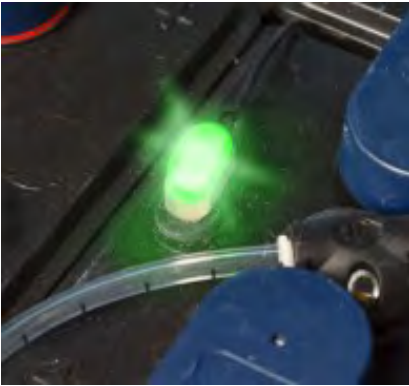
Description	Part Number
BWT Cartridge	PWRC-1800

Purity Light



Description	Part Number
Purity Light	PW-LIT2

Electrolyte Level Monitors



BasicBlinky, ACC-BWM3-S

- ◆ Low cost solution for electrolyte monitoring.
- ◆ Bright flashing green light means the electrolyte level is ok; no light means it's time to water.
- ◆ Polarity protected so that connecting the light incorrectly will not damage it permanently.
- ◆ Simple and easy installation- just one wire and a probe.



SmartBlinky, ACC-SWM3-S

- ◆ A bright green light (water level ok) and red (water needed) light provide a clear indication that the battery needs watering.
- ◆ Programmed to confirm the electrolyte level is below the probe tip before it changes from green to red- must be out of the electrolyte for 24 hours.
- ◆ Installation forgiveness in case of install errors and multiple fuses on the unit.
- ◆ Allows watering on a labor saving "as needed" basis.



SmartBlinky Remote, ACC-SREM3-S

- ◆ Ideal for batteries that do not leave the truck- the LED can be edge mounted.
- ◆ Programmed to confirm the electrolyte level is below the probe tip before it changes from green to red- must be out of the electrolyte for 24 hours.
- ◆ Installation forgiveness in case of install errors and multiple fuses on the unit.
- ◆ Allows watering on a labor saving "as needed" basis.



SmartBlinky Pro, ACC-SWP-C

- ◆ All of the great features as the SmartBlinky, with an audible alarm.
- ◆ LED is mounted on the battery cable, near the connector for maximum visibility.
- ◆ Since the electrolyte level can rise and fall several times a day, the LED only turns red when it's been low for 24 hours, reducing the risk of incorrect watering.
- ◆ Perfect for fast and opportunity charging applications.

Electrolyte Level Monitors (cont.)



Eagle Eye In Valve Electrolyte Level Sensor

- ◆ Probe is integrated into the valve.
- ◆ Red light means water is required; green light means fluid level is good.
- ◆ Handle on control module makes it easy to strap onto the battery
- ◆ Sealed lens protects the LED from impacts and acid mitigation.
- ◆ Reverse polarity protected.
- ◆ Valve for both industrial and deep cycle applications.

Visual Monitoring System (VMS1000)

- ◆ Easy to understand light system– yellow light indicates in use or being charged, red light indicates battery is charged and needs water, while a green light indicates battery is charged and water level is ok.
- ◆ Low profile so no need to worry about battery cable damage.
- ◆ LED light has a sealed polycarbonate lens.
- ◆ Tracks full charge cycles and reports information.



Flow-Rite Level Lights– Simple Level Light and Eagle Eye Drill In Sensor

- ◆ Simple level light has a green light when level is good and blank when the Electrolyte level is low.
- ◆ The drill in Eagle Eye sensor has nickel ring terminals to prevent corrosion.
- ◆ It is reverse polarity protected and has 3 self resetting fuses.
- ◆ Sealed polypropylene lens protects the LED from impacts and acid mitigation.

Electrolyte Monitoring System (EMS1000)

- ◆ Blinking red indicates water level is low, blinking green and water level is ok
- ◆ Light can be placed in whatever position is easiest to see
- ◆ Low current draw will not drain the battery
- ◆ Sensor is protected against transient voltages and incorrect polarity,
- ◆ EPDM grommet ensures perfect seal between the probe and cell.
- ◆ One year limited warranty.



Industrial and Automotive Chargers

Delta-Q Chargers



FR-1 Multi Voltage Charger



40 & 60 Amp Select-A-Charge



TSS Multivolt Charger



Multi Bank Chargers



Series-Multi Battery Charger



Contact us for available charger model numbers and sizes.

Marine and Golf Cart Chargers

Eagle Performance On –Board



Eagle Performance Portable



General Purpose Portable



Standard On-Board



Professional Series



Professional Series-Lithium/AGM



RealPro Series Charger



Sportsman Series



Dual Power Marine



Contact us for available charger model numbers and sizes.

Charger Parts & Accessories

Retrofit Charge Control



Type	Part Number
Retrofit	PF-101

Heavy Duty MagnaLug



Size	Part Number
1/0 lug	8810D
2/0 lug	8820D
3/0 lug	8830D
4/0 lug	105159

Copper Terminal Lug



Size	Part Number
6 ga. Lug	105038
1/0 copper lug	105118
2/0 copper lug	105138
3/0 copper lug	105159

Bulk Welding Cable



Size (sold by ft.)	Part Number
1/0 Red	10WC-R
1/0 Black	10WC-B
2/0 Red	20WC-R
2/0 Black	20WC-B
3/0 Red	30WC-R
3/0 Black	30WC-B
4/0 Red	40WC-R
4/0 Black	40WC-B

8 Ft. Charger Cable Assembly



Type	Part Number
1/0 red w/ 1/0 tip & lug	10WC-R-ASSY
1/0 black w/ 1/0 tip & lug	10WC-B-ASSY
2/0 red w/ 2/0 tip & lug	20WC-R-ASSY
2/0 black w/ 2/0 tip & lug	20WC-B-ASSY
3/0 red w/ 3/0 tip & lug	30WC-R-ASSY
3/0 black w/ 3/0 tip & lug	30WC-B-ASSY
4/0 red w/ 4/0 tip & lug	40WC-R-ASSY
4/0 black w/ 4/0 tip & lug	40WC-B-ASSY

Charger Parts & Accessories (cont.)

4-Wire SO Cord



Type	Part Number
10 AWG / 4 conductors	SO10-4
12 AWG / 4 conductors	SO12-4

Locking Plug



Size	Part Number
20A twist lock	LP20A
30A twist lock	LP30A

CR-1/CWB Mounting Bracket



Type	Part Number
Bracket	CR-MT-Y

Charger Cable Retractor



Type	Part Number
Retractor box	CCR-12HD

Pogo Stick Cable Retractor



Style	Part Number
Black	CR-1
Chrome (Light Duty)	94010-1
Chrome (Heavy Duty)	94010-2

Magnet Cable Mount



Type	Part Number
Magnet mount	CR-M

Charger Parts & Accessories (cont.)

Diodes



Type	Part Number
85 amp diode	DI085
150 amp diode	DI150

Line Contactor



Type	Part Number
24v coil	DPC-40-24

Oval, 660V Capacitors



Type	Part Number
1 mfd	Cap-660-1
2 mfd	Cap-660-2
3 mfd	Cap-660-3
4 mfd	Cap-660-4
5 mfd	Cap-660-5
6 mfd	Cap-660-6
8 mfd	Cap-660-8
9.5 mfd	Cap-660-9.5
10 mfd	Cap-660-10
12 mfd	Cap-660-12
15 mfd	Cap-660-15
18 mfd	Cap-660-18
20 mfd	Cap-660-20
25 mfd	Cap-660-25
30 mfd	Cap-660-30
35 mfd	Cap-660-35
40 mfd	Cap-660-40
45 mfd	Cap-660-45
50 mfd	Cap-660-50
60 mfd	Cap-660-60

Control Transformer



Secondary Output	Part Number
24 Volt	XTRAN480/24

Modular Charger Repair Parts



Charger Part	Part Number
Charger Module	CALL
Main Display Board	CALL

AC & DC Fuses

LET Fuse



Type	Part Number
125 amp	LET-125
160 amp	LET-160

LMT Fuse



Type	Part Number
160 amp	LMT-160
315 amp	LMT-315
450 amp	LMT-450

ANN Fuse



Type	Part Number
60 amp	ANN-60
100 amp	ANN-100
150 amp	ANN-150
175 amp	ANN-175
200 amp	ANN-200
225 amp	ANN-225
250 amp	ANN-250
300 amp	ANN-300
350 amp	ANN-350
400 amp	ANN-400

JTD Fuses



Type	Part Number
15 amp	JTD-15
20 amp	JTD-20
25 amp	JTD-25
30 amp	JTD-30
40 amp	JTD-40
50 amp	JTD-50

KAA Fuses



Type	Part Number
100 amp	KAA-100
150 amp	KAA-150
200 amp	KAA-200
250 amp	KAA-250
300 amp	KAA-300
400 amp	KAA-400

NOS Fuse



Type	Part Number
10 amp	NOS-10
15 amp	NOS-15
20 amp	NOS-20
25 amp	NOS-25
30 amp	NOS-30

Call for other sizes or miscellaneous fuses.

Safety Apparel

PowRparts.com offers a wide variety of safety apparel. Most items can be customized with your company logo and sizes range from S to 5XL. Contact us at Sales@powRparts.com for more info!

Eye Protection



Head Gear



Workwear



Gloves



Face Shield



Hearing Protection



High Visibility Work Wear



Cooling Gear



Welding Protection



Safety Items & Spill Products

Battery Maintenance Kit



Maintenance Kit	Part Number
(1) Kit	WSC-2007

Acid Absorbing/Neutralizing Sock



Item	Part Number
(1) 6' Sock	40-1402FR

Sulfuric Acid Spill Kits



Kit Size	Part Number
6 Gallon Sulfuric Acid Spill Kit	40-2000
15 Gallon Sulfuric Acid Spill Kit	40-1422
30 Gallon Sulfuric Acid Spill Kit	40-1420

Acid Absorbing/Neutralizing Pillow



Item	Part Number
(1) 12" x 12" Pillow	40-1401FR

Safety Items & Spill Products (cont.)

Pink Heavy Duty PigMat



Color	Part Number
Pink	MAT309

Hydrogen Detector



Type	Part Number
Dual Relay	HGD-2

OSHA Compliant Sign Kit



Kit	Part Number
(9) Signs per kit	SP-1

Battery Acid Floor & Counter Mat



Type	Part Number
3' x 50' roll	510170-050

Heavy Duty Safety Kit



Type	Part Number
Safety Gear Kit	1450

Portable Eyewash Refill



Type	Part Number
Anit-Bacterial	510501

Portable Eye Wash



Size	Part Number
16 Gallon	G1540

Emergency Shower



Mount Type	Part Number
Horizontal	G1643

Wall-Mounted Eye Wash



Size	Part Number
11.75" Diameter	G1814P

Warehousing Products

PowRparts.com offers a wide range of products to meet your warehouse needs. Contact us at Sales@powRparts.com for more info on pricing and all available product options.

Parking Blocks



Safety Bollard



Barrier Rails



Scissor Lift Table



Mobile Lift Table



Ramps



Industrial Shelving



Forklift Work Platform



Bin Tipper



Forklift Repair Parts

PowRparts.com offers a wide range of products to meet your warehouse needs. Contact us at Sales@powRparts.com for more info on pricing and all available product options.

Warning Alarm



Pedestrian Spotlight



Pedestrian Boundary Light



Replacement Seatbelts



LED Worklights



Universal Key Set



Forklift Replacement Seats



Backup Alarm



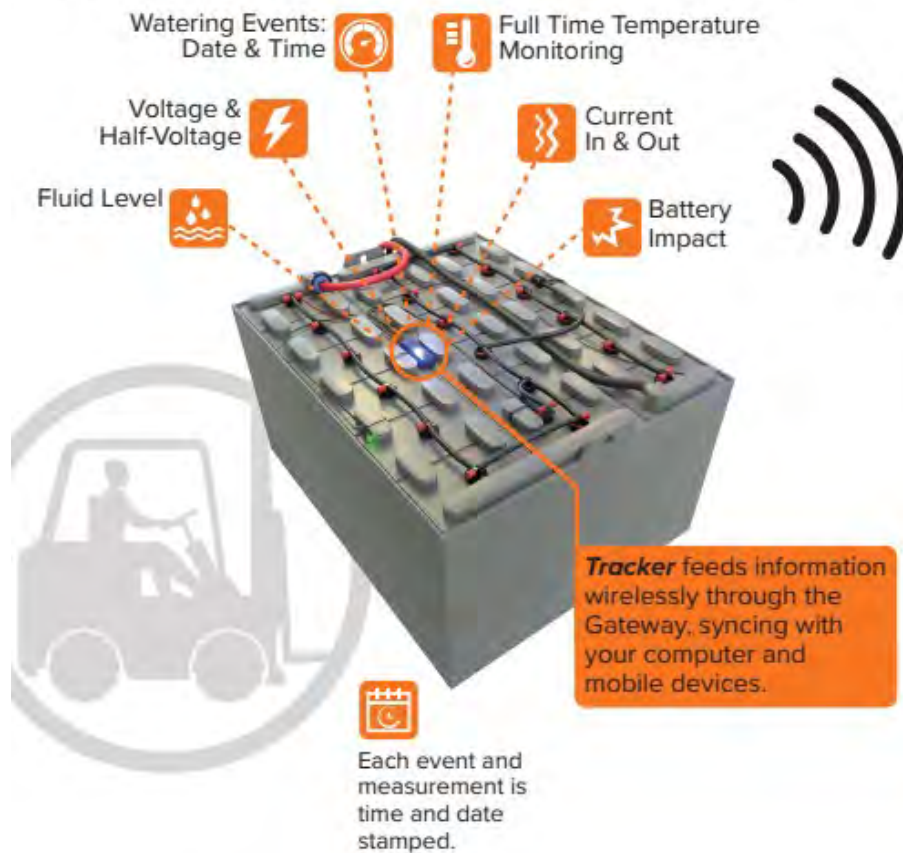
Ignition Switch



Fleet Management



SENSORS WIRELESSLY COMMUNICATE USEFUL DATA:



Battery Steward is an app and web portable solution that organizes your battery care schedule, alerts you when tasks are due, records maintenance and asset data, and allows you to proactively identify neglected, misused, or abused batteries.

- ◆ Use your mobile device and identifying labels to create tasks lists, which include watering, equalizing, and preventative maintenance.
- ◆ Check of batteries by scanning the label on your battery
- ◆ Get alerts when a task is due or past due.
- ◆ Adding a ABS tracker will wirelessly communicate even more useful data, such as voltage and half voltage, fluid levels, battery impact, current in and out, temperature monitoring, and more!

Fleet Management



FRED is an application designed to keep track of required maintenance of industrial equipment. It is a custom app developed by Battery Watering Technologies that is used to intelligently automate, track and monitor the maintenance on batteries, chargers and forklifts. Your maintenance operation is elevated to a whole new level, giving you the management, automation and data visibility capabilities you require. There are multiple ways to customize the app to meet your company's individual needs.

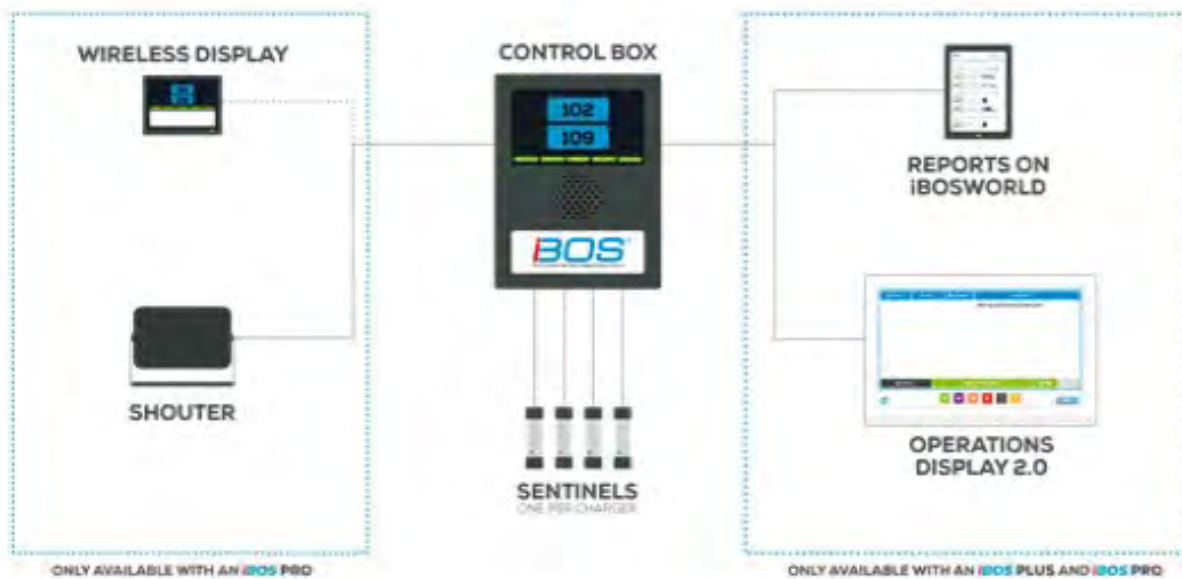


- ◆ App operation allows the user to view the scheduled maintenance on the task list for a particular piece of equipment or all equipment. It shows a list of required maintenance tasks that are upcoming, due, or overdue. Simply scan the barcode on the equipment or select it in the app.
- ◆ FRED can work offline and store data until connected to the internet where it is then uploaded to the cloud and available for data reports. Real time data collection is optimal and simply requires internet service.
- ◆ Quickly view historical data or send notes to the Whiteboard, which is an easy place for technicians to report problems found that will require more attention at a later date.

Fleet Management



The IBOS system eliminates the guesswork involved with managing your battery room and changing batteries, enabling a lean approach and ensuring proper battery rotation. The system knows when the chargers are finished charging and a simple screen or pick light tells the operator which charger to get their next battery from!



Fleet Management



Easy to use: The iBOS has a simple read and react system and a large display that tells forklift operators the correct battery to pick next.

Reduces mispicks: The shouter sounds an alarm when the operator takes a battery that is not fully charged; this helps to reduce mispicks.

Real-time monitor: Provides all the information needed to manage the battery pool efficiently.

Longer battery life: Optimized battery life due to batteries being allowed to cool down. This leads to fewer battery purchases each year.

Better battery room visibility: Identifies non-working equipment and problems in the battery room via management reports.

Accurate battery purchases: Helps managers decide if there are too many or too few batteries in the pool.

- ◆ **Fewer and faster battery changes:** The iBOS systems save 2 to 5 minutes per change and result in 30 minutes longer battery run time.



Used Equipment

Whether you are looking for batteries, chargers, or battery handling equipment, powRparts.com is your source for used and reconditioned equipment. All equipment is tested before shipping and every item comes with a 90 day warranty.

Batteries come with a copy of their load test, chargers come set to your specifications and connector needed, and any rollers are tested that they roll freely. Contact us for a quote on whatever you are looking for!



Forklift Batteries



Battery Roller Stands



Single and Three Phase Chargers



Hardwood Battery Stations



Battery Wash Equipment



Battery Transfer Carts

Follow Us on Social Media



Keep up with our latest product specials and more.



Follow on LinkedIn @powRparts



Subscribe on YouTube @powRparts



Like on Instagram @powRparts



Follow on Facebook @powRparts



pow**Rparts****.com**
THE MOTIVE POWER ONLINE STORE

Phone: (888) 231-5111



sales@powRparts.com