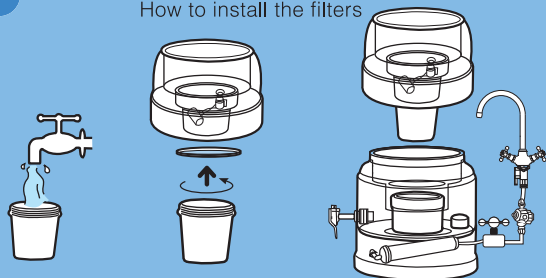


How to assemble and use

F

Bio 1000A (Automatic Type)

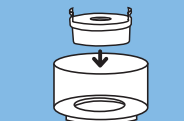
How to install the filters



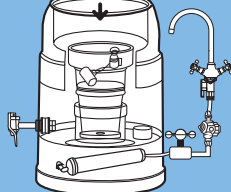
- After 1 hour of soaking, take out the main filter from the water container, wash again by flushing water through the filter until there is no more black or white small particles coming from the filter. Then install the main filter as shown. Please check if the rubber rings (O-ring) of main filter is properly installed, as this may cause a leak.



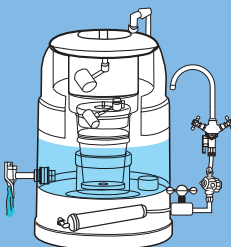
- Place the assembled main funnel on the glass pot.



- After soaking for 1 hour, take out the upper (1st stage) filter from the water container, and wash again by flushing water through the filter until there are no black or white small particles coming from the filter. Then install the upper (1st stage) filter in the upper funnel as shown.



Finally, rinse out the entire Bio 1000A by filling 2 full pots of water. Drain it out through the faucet. Then Bio1000A is ready for use.



Important Reminders

- Be sure to replace the filters as directed by your supplier or agent.
- Do not leave the product near fire, stove, heat, etc.
- Be sure to use only tap water. Do not use hot water or beverage.
- Water from wells is not recommended for BIO 1000 / BIO 1000A. This may also shorten the lifespan.
- Do not store the filtered water in aluminum ware or copper ware.
- Glass Pot is fragile.
- It is recommended to clean the Glass Pot every three months.
- Keep the product clean.
- Keep the bio ceramic filter and mineral main filter submerged in water.

Specification

Model		Bio 1000 (Manual Type)	
Height	495mm	Diameter	305mm
Weight	7 kg	Pot Capacity	10 liters
Material	Pollution-free material		
Name of filter	Quantity	Lifespan of filter	
Upper(1st stage)filter	6pcs.	6 months / each pc	
2nd Stage Filter	1pc.	36 months / each pc	
Main Filter	1pc.	36 months / each pc	
Bio Ceramic Filter	1pc.	Replacement is not required unless broken	
Alkalite Diskette	1pc.	Replacement is not required unless broken	
Sub Mineral Cartridge	1pc.	36 months / each pc	
Micro Cotton Pad	1pack,(80 pcs)	14 days/each pc or when it turns yellow	

Model		Bio 1000A (Automatic Type)	
Height	495mm	Diameter	305mm
Weight	7 kg	Pot Capacity	10 liters
Material	Pollution-free material		
Name of filter	Quantity	Lifespan of filter	
Upper(1st stage)filter	6pcs.	6 months / each pc	
Main Filter	1pc.	36 months / each pc	
Bio Ceramic Filter	1pc.	Replacement is not required unless broken	
Alkalite Diskette	1pc.	Replacement is not required unless broken	
Sub Mineral Cartridge	1pc.	36 months / each pc	
Pre Sediment Filter	1pc.	12 months / each pc	

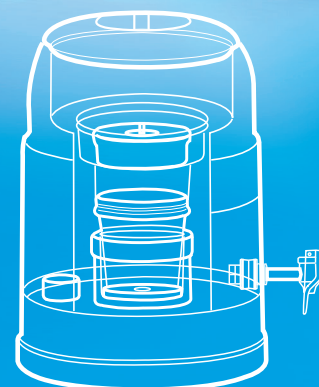
The recommended filter capacity and the recommended lifespan of filter parts stated above serve as a guide only. To ensure water quality, it is recommended to replace filters as mentioned above. Filter lifespan subject to water quality and average daily use, see regional distributor for recommendations.*

WATERS CO. NEW ZEALAND / Phone 0800 928 377 0800 WATERS www.watersco.co.nz
 WATERS CO. AUSTRALIA / Phone 1300 799 099
 www.waterscoaustralia.com.au



BIO 1000 / 1000A (Manual type) (Automatic type) INSTRUCTION MANUAL

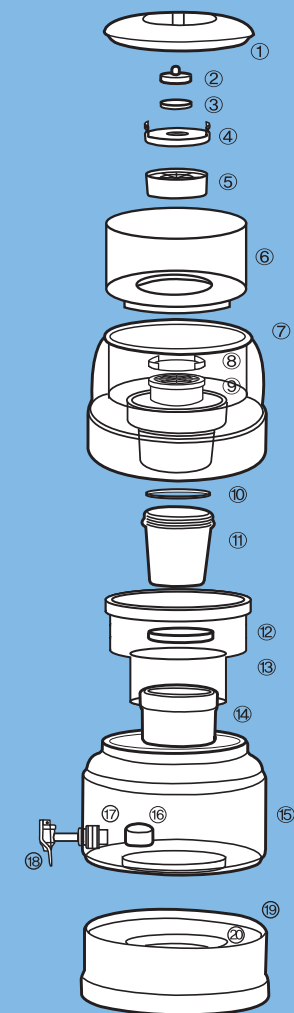
“Drink water as nature intended”



Structure

A

BIO 1000 (Manual type)



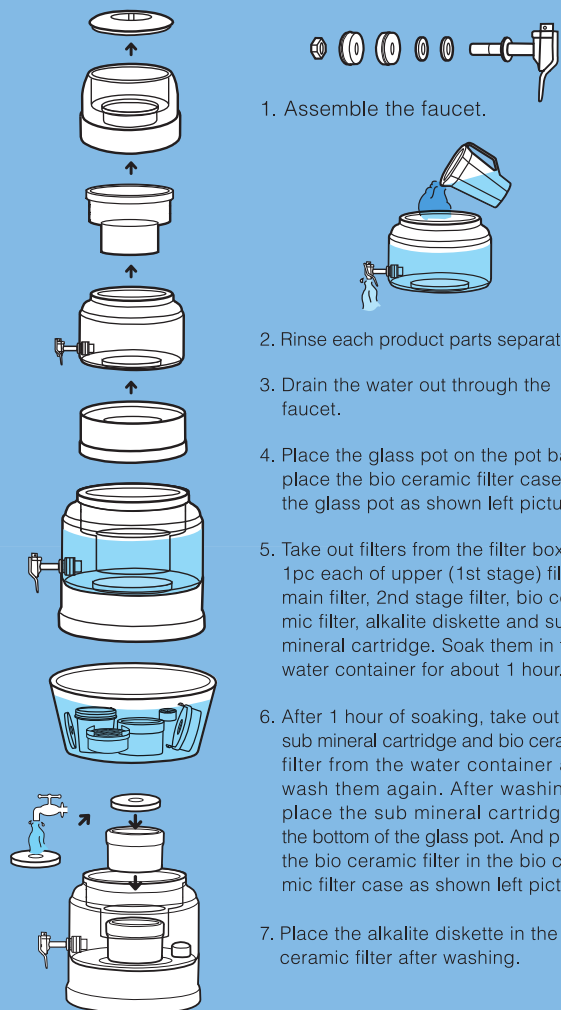
- Cap
- Micro Cotton Pad Holder
- Micro Cotton Pad
- Upper(1st Stage)Filter Cover
- Upper(1st Stage)Filter
- Upper Funnel
- Main Funnel
- 2nd Stage Filter Cover
- 2nd Stage Filter
- O-ring
- Main Filter
- Alkalite Diskette
- Bio Ceramic Filter Case
- Bio Ceramic Filter
- Glass Pot
- Sub Mineral Cartridge
- Magnet Outlet
- Faucet
- Pot Base
- ND Magnet

How to assemble and use

B

Bio 1000 (Manual Type)

How to rinse the product parts and how to wash the filters



1. Assemble the faucet.

2. Rinse each product parts separately.

3. Drain the water out through the faucet.

4. Place the glass pot on the pot base, place the bio ceramic filter case on the glass pot as shown left picture.

5. Take out filters from the filter boxes-1pc each of upper (1st stage) filter, main filter, 2nd stage filter, bio ceramic filter, alkalite diskette and sub mineral cartridge. Soak them in the water container for about 1 hour.

6. After 1 hour of soaking, take out the sub mineral cartridge and bio ceramic filter from the water container and wash them again. After washing, place the sub mineral cartridge in the bottom of the glass pot. And place the bio ceramic filter in the bio ceramic filter case as shown left picture.

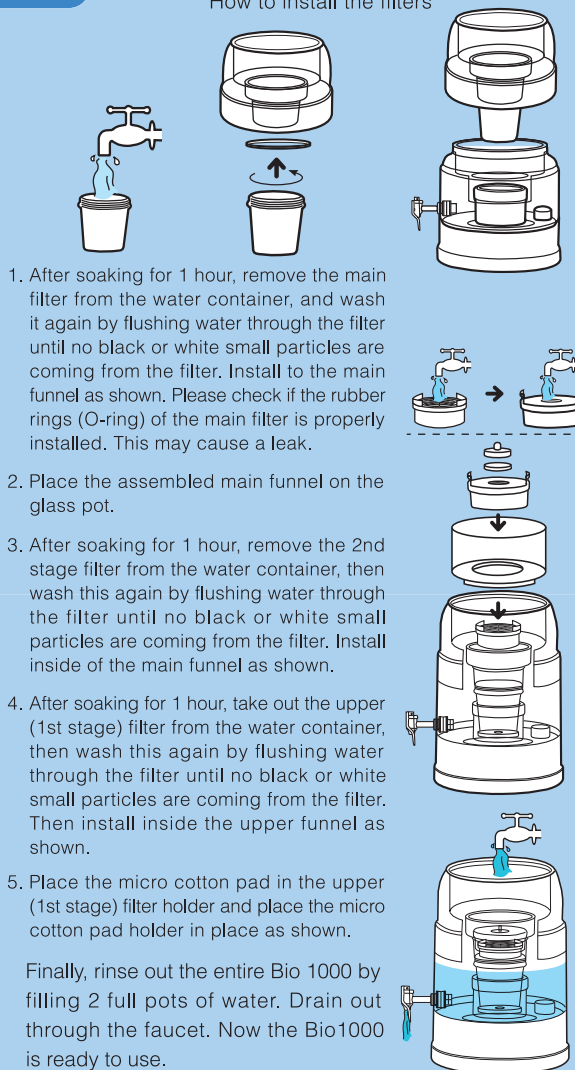
7. Place the alkalite diskette in the bio ceramic filter after washing.

How to assemble and use

C

Bio 1000 (Manual Type)

How to install the filters



1. After soaking for 1 hour, remove the main filter from the water container, and wash it again by flushing water through the filter until no black or white small particles are coming from the filter. Install to the main funnel as shown. Please check if the rubber rings (O-ring) of the main filter is properly installed. This may cause a leak.

2. Place the assembled main funnel on the glass pot.

3. After soaking for 1 hour, remove the 2nd stage filter from the water container, then wash this again by flushing water through the filter until no black or white small particles are coming from the filter. Install inside of the main funnel as shown.

4. After soaking for 1 hour, take out the upper (1st stage) filter from the water container, then wash this again by flushing water through the filter until no black or white small particles are coming from the filter. Then install inside the upper funnel as shown.

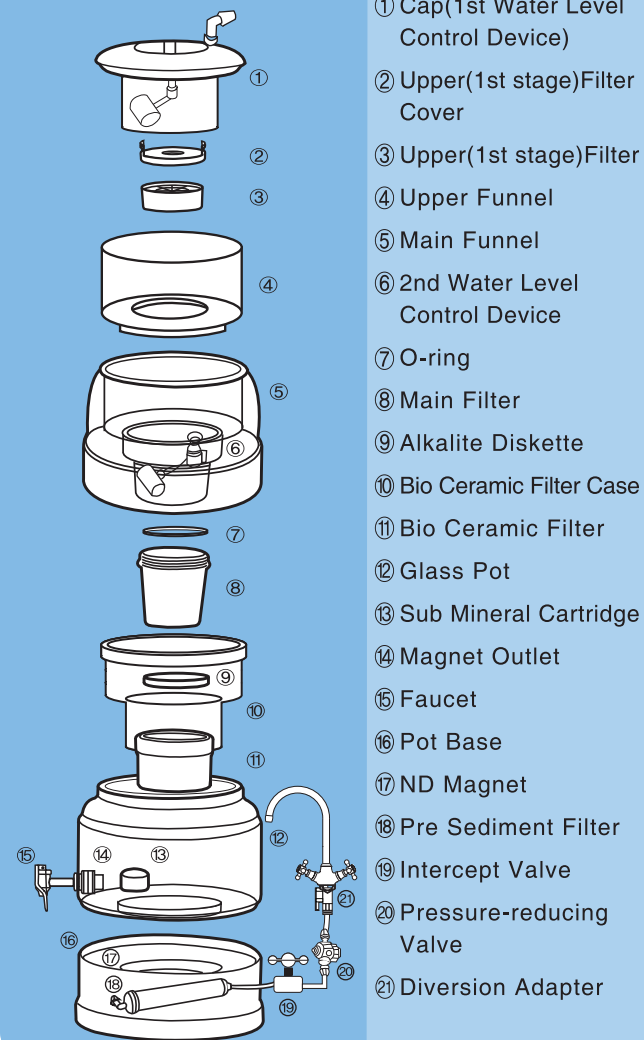
5. Place the micro cotton pad in the upper (1st stage) filter holder and place the micro cotton pad holder in place as shown.

Finally, rinse out the entire Bio 1000 by filling 2 full pots of water. Drain out through the faucet. Now the Bio1000 is ready to use.

Structure

D

BIO 1000A (Automatic Type)



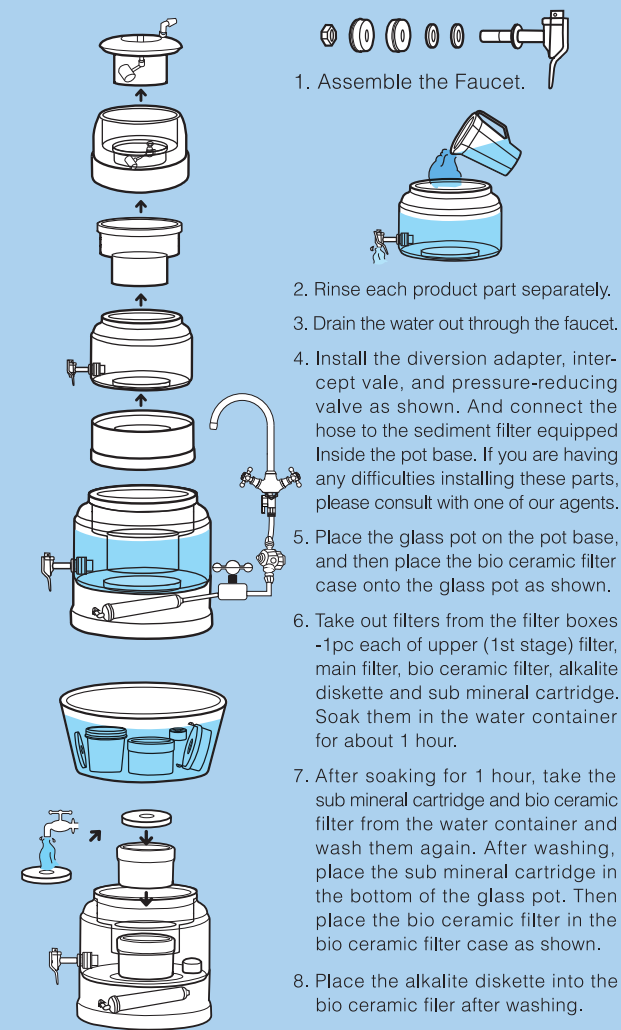
- ① Cap(1st Water Level Control Device)
- ② Upper(1st stage)Filter Cover
- ③ Upper(1st stage)Filter
- ④ Upper Funnel
- ⑤ Main Funnel
- ⑥ 2nd Water Level Control Device
- ⑦ O-ring
- ⑧ Main Filter
- ⑨ Alkalite Diskette
- ⑩ Bio Ceramic Filter Case
- ⑪ Bio Ceramic Filter
- ⑫ Glass Pot
- ⑬ Sub Mineral Cartridge
- ⑭ Magnet Outlet
- ⑮ Faucet
- ⑯ Pot Base
- ⑰ ND Magnet
- ⑱ Pre Sediment Filter
- ⑲ Intercept Valve
- ⑳ Pressure-reducing Valve
- ㉑ Diversion Adapter

How to assemble and use

E

BIO 1000A (Automatic Type)

How to rinse the product parts and how to wash the filters



1. Assemble the Faucet.

2. Rinse each product part separately.

3. Drain the water out through the faucet.

4. Install the diversion adapter, intercept valve, and pressure-reducing valve as shown. And connect the hose to the sediment filter equipped inside the pot base. If you are having any difficulties installing these parts, please consult with one of our agents.

5. Place the glass pot on the pot base, and then place the bio ceramic filter case onto the glass pot as shown.

6. Take out filters from the filter boxes -1pc each of upper (1st stage) filter, main filter, bio ceramic filter, alkalite diskette and sub mineral cartridge. Soak them in the water container for about 1 hour.

7. After soaking for 1 hour, take the sub mineral cartridge and bio ceramic filter from the water container and wash them again. After washing, place the sub mineral cartridge in the bottom of the glass pot. Then place the bio ceramic filter in the bio ceramic filter case as shown.

8. Place the alkalite diskette into the bio ceramic filter after washing.