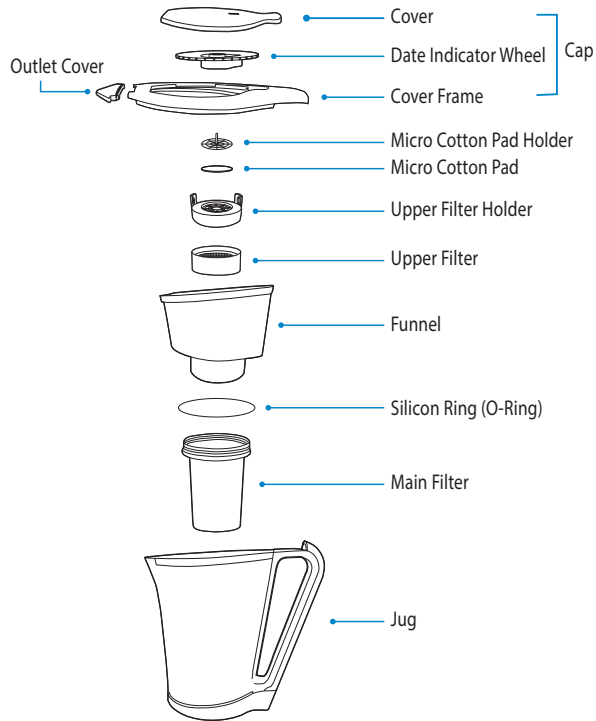
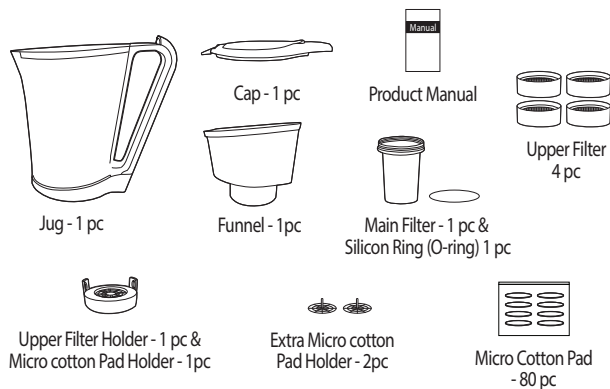


Structure



Product Composition



Special Reminders

1. Be sure to replace the filters immediately after (or shortly before) indicated lifespan.
2. Do not leave the product near fire, stove, sunlight, heat and etc.
3. It would be fine to put the product into the refrigerator to make the cool water. But do not use hot water or any kind of beverage to the product.
4. Do not store the filtered water in aluminum ware or copper ware.
5. Keep the product clean.
6. Whenever replace the filters, filter the tap water through the filters and empty out 2~3 complete jugs before use.
7. If the product has not been used for 7 days or more, please empty the pot and refill 2 times, before reusing.
8. In case the filter is clogged, remove the air inside of filter by washing water through filter.
9. When the water level of jug is full, do not pour the water into the funnel additionally.
10. When washing the product, use the soft fabric or soft brush to avoid any small scratches.

Specification

Product name	New Ace
Height	270 mm
Length and Width	255X115 mm
Weight	1,073g
Maximum filtering capacity per each day	?
Plastic material of Jug	SAN (Styrene Acrylonitrile Copolymers)

Product lifespan

Name of filter	Lifespan
Main filter	? months
Upper filter	? months
Micro cotton pad	? days or when it get dirty

New Waters Alkaline Mineral
Ace

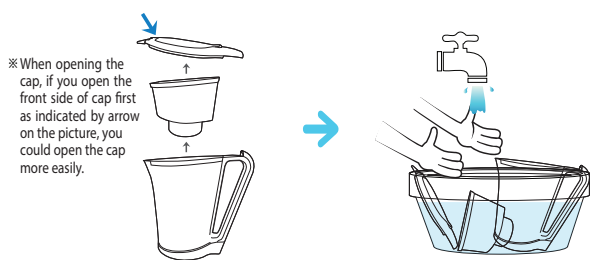
Product Manual

New Ace

 **Waters**

How to assemble and use

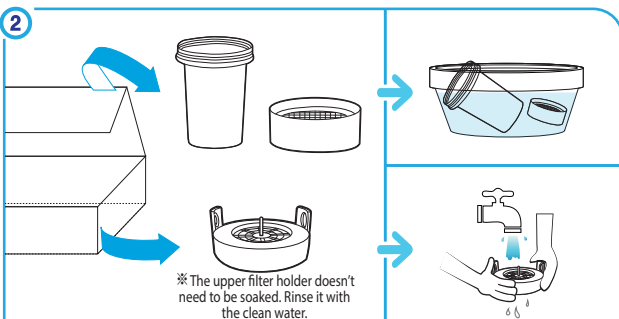
1



※ When opening the cap, if you open the front side of cap first as indicated by arrow on the picture, you could open the cap more easily.

- Rinse the cap, funnel, and jug separately as shown above picture.

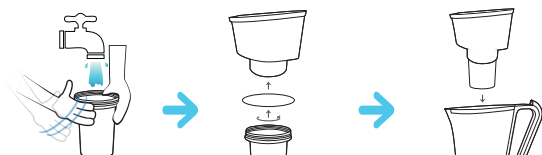
2



※ The upper filter holder doesn't need to be soaked. Rinse it with the clean water.

- Take out 1 pc of upper filter and 1 pc of main filter from the filter box, and soak them in the water container for about 10 minutes. Rinse the upper filter holder with clean water.

3

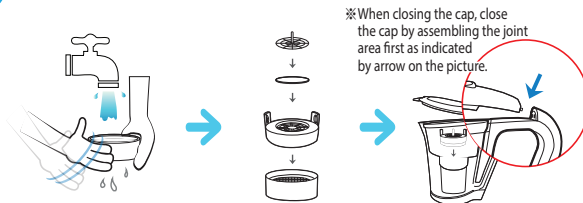


※ Tapping the side of filter with hand or soft stick may help to washing the filter more thoroughly.

※ Please check if the silicon ring (O-ring) of mail filter is properly installed. It may cause a leak without it.

- After 10 minutes soaking, take out the main filter from the water container first, and wash it by filtering water through the filter until no black or white small particles coming out from the filter. After washing, install it to the funnel as shown above. And then, install the assembled funnel to the jug.

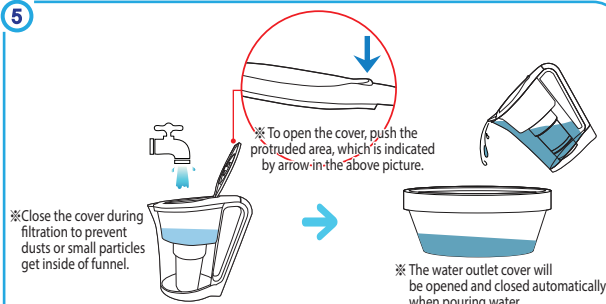
4



※ When closing the cap, close the cap by assembling the joint area first as indicated by arrow on the picture.

- After 10 minutes soaking, take out the upper filter from the water container, and wash it again by filtering water through the filter until no black or white small particles coming out from the filter. After washing, assemble the upper filter, upper filter holder, 1 pc of micro cotton pad, and micro cotton pad holder in orderly as shown above. And then, install the assembled upper filter into the funnel as shown, and close the cap.

5



※ To open the cover, push the protruded area, which is indicated by arrow in the above picture.

※ Close the cover during filtration to prevent dusts or small particles get inside of funnel.

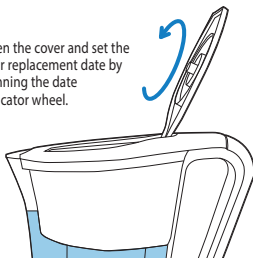
※ The water outlet cover will be opened and closed automatically when pouring water.

- Finally, pour the tap water into funnel and empty out 2~3 complete jugs before use. Now, product is ready for us

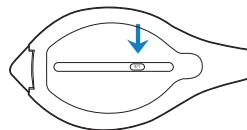
6

*Filter replacement date indication.

※ Open the cover and set the filter replacement date by spinning the date indicator wheel.



※ The filter replacement date will be displayed on top side of cap.

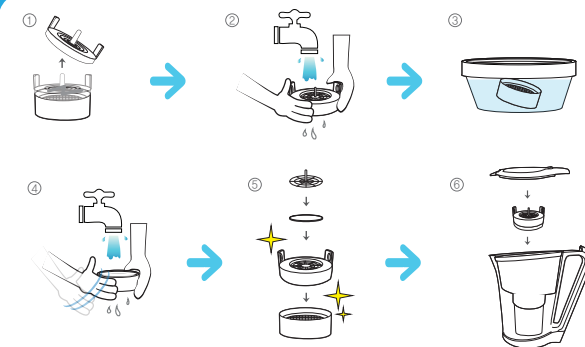


- Set the filter replacement date by spinning the date indicator wheel located inside of cover. The interval between the date is 10 days. Please set the filter replacement date to displayed date as close as possible.

How to replace the filters

*Upper filter

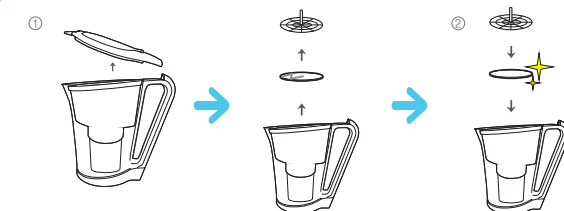
※ For the lifespan of upper filter, please refer to the filter lifespan in the product manual.



1. Take out the used upper filter from the product, and dispose the used upper filter after disassembling the upper filter holder from the upper filter.
2. Wash the disassembled upper filter holder with clean water.
3. Take out the new upper filter from the filter box, and soak it in the water container for about 10 minutes.
4. After 10 minutes soaking, take out the upper filter from the water container, and wash it again by filtering water through the filter until no black or white small particles coming out from the filter.
5. After washing, assemble the washed upper filter and upper filter holder in orderly as shown above with 1 pc of micro cotton pad and micro cotton pad holder.
6. And then, install the assembled upper filter into the funnel as shown, and close the cap.

*Micro Cotton Pad

※ For the lifespan of micro cotton pad, please refer to the lifespan of product manual.



1. Open the cap, and disassemble the micro cotton pad holder from the upper filter holder. And dispose the used micro cotton pad.
2. After replacing the used micro cotton pad with the new micro cotton pad, install the micro cotton pad holder to the upper filter holder again as shown above.