



Any Age

# Honey Bees Express (Quick) Lapbook

Mini Lapbook, Study Guides, Coloring Sheets, and Activities



A Journey Through Learning  
[www.ajourneythroughlearning.com](http://www.ajourneythroughlearning.com)

Authors-Paula Winget and Nancy Fileccia  
Copyright © 2013 A Journey Through Learning

Pages may be copied for other members of household only. For group use, please see our website to purchase a classroom/co-op license.

Please check our website at:  
[www.ajourneythroughlearning.com](http://www.ajourneythroughlearning.com)

While you are there, sign up for our email newsletter and receive a FREE lapbook!  
You'll also receive great discount codes, special offers, find out what's new and what's to come!

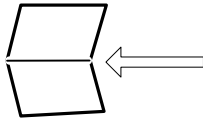
Join us on Facebook!

Clipart is from [www.clipart.com](http://www.clipart.com) with permission

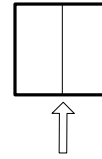
Sample Page

## Things to Know

### Hamburger Fold-Fold horizontally



### Hotdog Fold-Fold vertically

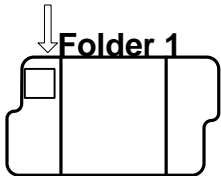


**Dotted Lines**-These are the cutting lines.

**Accordion Fold**-This fold is like making a paper fan. Fold on the first line so that title is on top. Turn over and fold on next line so that title is on top again. Turn over again and fold again on the next line so that title is on top. Continue until all folds are done.

**Cover Labels**-Most of the booklets that are folded look nicer with a label on top instead of just a blank space. They will be referred to as “cover label.”

### How do I know where to place each template in the folder?

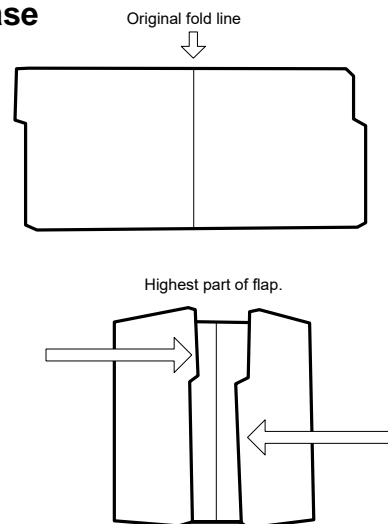


This placement key tells you the template goes in the first folder at the top of the left flap.

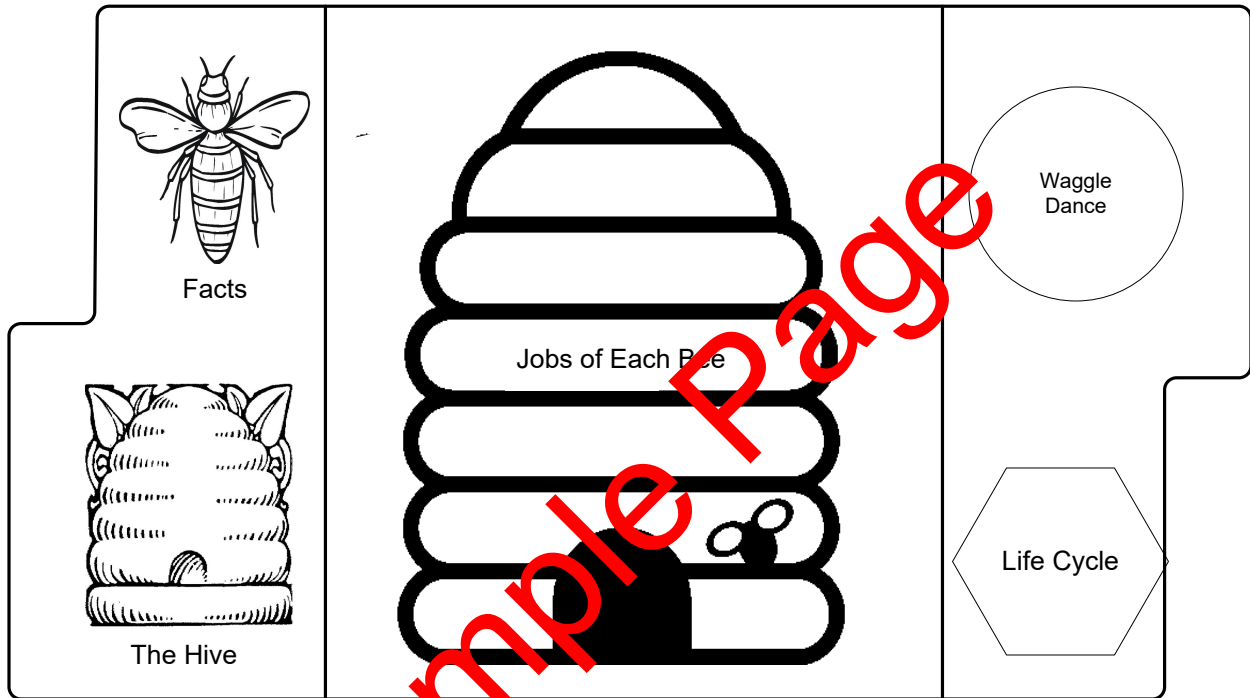
### Folding a Notebook Base

Gather the number of folders required for the project. Fold them flat as seen here.

For each folder, fold the left and right sides inward toward the original line to create two flaps. Crease so that the highest part of each flap is touching the original line. It is important not to let the two flaps overlap. *You may want to take a ruler and run it down each crease to make it sharper.*



# Booklet Placement Guide



**Complete the Scene**

Cut on dotted line. Glue to the front of your folder. Draw a big bee on your paper.

# Honey Bees Lapbook

Sample Page

## Honey Bee Miscellaneous

The Scientific Name of the honey bee is *Apis mellifera* Linnaeus. It is in the Order of Hymenoptera. Most honey bees are black, brown, or brown intermixed with yellow. There are several different varieties of honey bees. They have been bred to produce honey and also for their temperament and resistance to diseases. Honey bees are considered to be social insects. Honey bees are known for their production and storage of honey. A group of bees is called a colony. A colony generally contains one queen bee, the fertile female, a few thousand-drone bees, and a large population of female worker bees.

There may be tens of thousands of bees living in a single colony. Each worker bee has a special job.

- ~**Worker bees** produce and form honeycombs using wax from their mouths.
- ~ **Young worker bees** clean the hive and feed the larvae.
- ~**Older worker bees** collect nectar and pollen. They also guard the hive.

The bees live in a hive. Hives can be located just about anywhere including hollow trees, empty walls, and under the eaves of houses. Inside of the hive are hexagonal cells. It is in these cells that the queen lays her eggs.

The bees lay their eggs in a single cell of the honeycomb. Bee eggs are called larvae. The eggs, or larvae, hatch in 3 to 4 days. The larvae is fed by the worker bees. The eggs are cared for and fed by worker bees.

They stay in the cell until they are fully developed. When the larvae pupates, the worker bees will cap the cell. It takes queen bees about 15 days to develop, drones about 24 days, and workers about 21 days.

# Types of Honey Bees

A **queen** bee produces the eggs. Each hive only has one queen. The queen can live up to five years. She can lay up to 2000 eggs per day. All **worker** bees are female, but they cannot lay eggs. The worker bees are all females, but they cannot reproduce. The worker bees only live for a few months. It is the worker bees that leave the hive and collect the pollen and nectar from flowers. They hold the pollen in a "basket" located behind each leg. The nectar is carried in the "honey sac" located in the front part of the digestive system. They only live for around nine months. It is said that they really do work themselves to death. **Drone** bees are the male bees. The Drone bees do not have stingers. They are used only for mating. Drones die each winter. Each hive usually has about 3,000 drones.



Queen



Worker



Drone

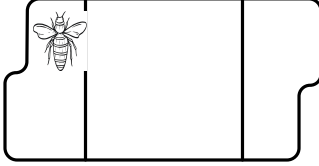
Sample Page

## Waggle Dance

Bees communicate with each other in a pattern of "dancing" known as the bee dance or waggle dance. The bee flies in a sort of figure 8 formation. This dance lets other bees in the colony know about the location of flowers with nectar and pollen, water sources, and new housing.

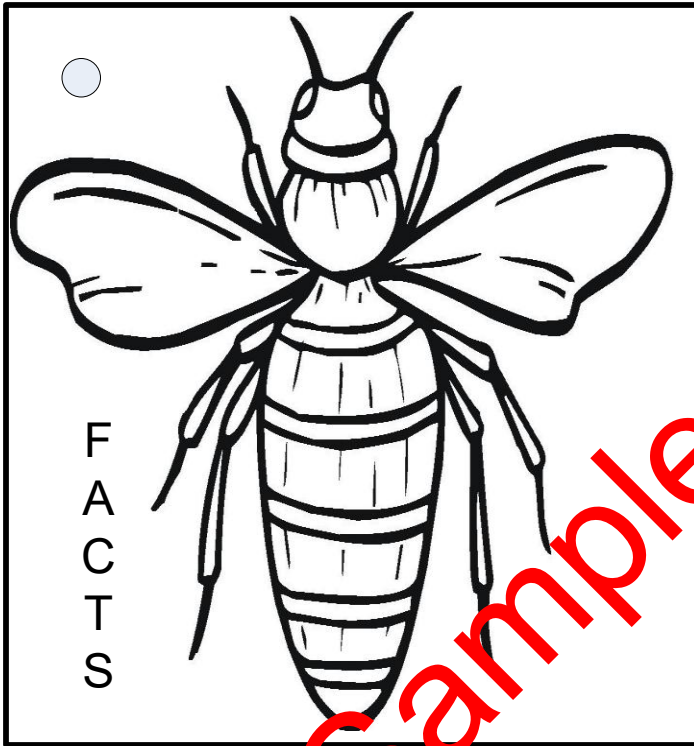


### Folder 1



Cut out the two booklets. Stack together. Fasten with a brad or staple. Glue into lapbook.

**Directions:** Color the bee the correct colors. Answer the questions on the second booklet.



What is the scientific name for honey bees?

Why do we need honey bees?

Sample Page