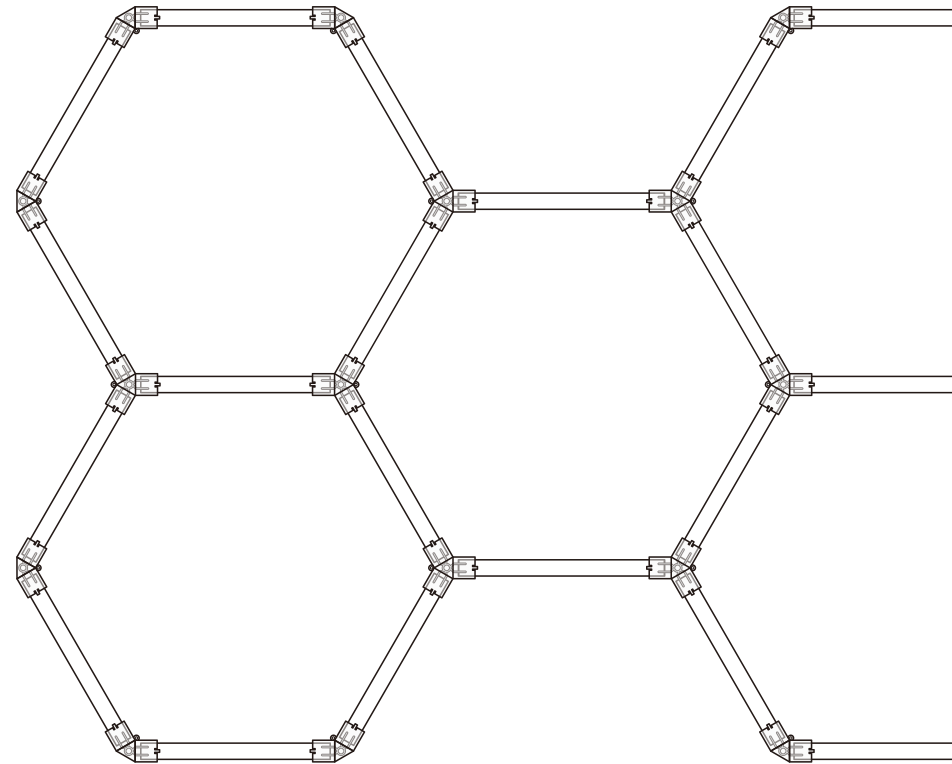




A good & brand new product. Congrats!
Enjoy brighter life now.

Feel free to contact us
Email: service@hi-hyperlite.com
Toll-free number: +1(855) 688 7879



HEXAGON LED LIGHT

RELIABLE SOLID BRIGHT

HEXAGON LED LIGHT

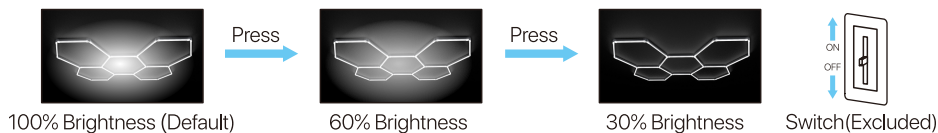
Model		5 HEX-DM
Picture	QTY	
6W Tubes	x 25	
120° V connector	x 12	
120° Y connector	x 10	
5ft Power cable	x 1	
Wire Nuts	x 4	
Screws	x 25	
Anchoring	x 25	
Nylon zip tie	x 28	

Note: The package includes one spare unit for each tube and connector.

FEATURES & SPECIFICATIONS

Performance Data		5 HEX-DM
Physical & Listing	Power	144W
	Input Voltage	100-240V AC
	CCT	5000K or 6500K
	Mounting	Suspension / Surface mount
	Life span	> 30,000 hours
	Warranty	24 Months

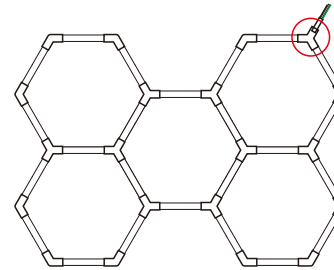
DIMMING INSTRUCTIONS



Note: Switch on and off within 3 seconds to jump to the next brightness. The next time the light is turned on, it will maintain the last brightness.

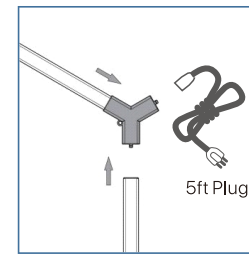
INSTALLATION

- Connect the tubes by series as follows, each red circles requires its own power source.

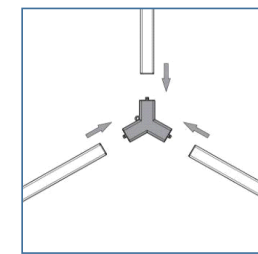


CAUTION!!

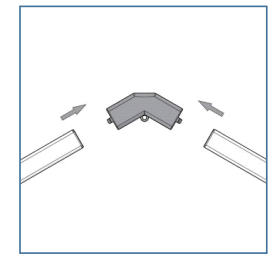
1. Please be careful when connecting the light bars with the connectors. Don't damage the copper needle in the connectors.
2. Make your desired pattern and test it before installing it on the ceiling.
3. Only 1 connector for AC input cord:
 - Black - Line
 - White - Neutral
 - Green - Ground



1. Confirm the correct AC input connector



2. Connect the 120° Y connector

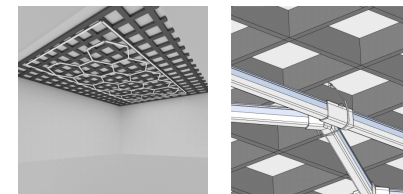


3. Connect the 120° V connector

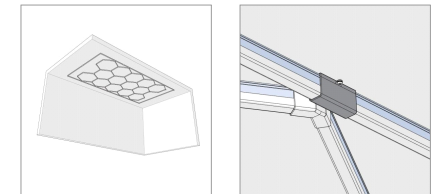
Note: The number of cables needed is dependent on the size and amount of lighting tubes. (1 cable per 65 six-watt tubes or 25 sixteen-watt tubes, max: 400W connection.)

- How to install it on the ceiling.

1. Grid roof - Tie it with zip ties



2. Flat roof - Screw the connector from the hole to the ceiling directly

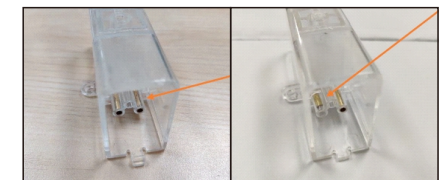


Remarks:

1. There should be 1 wire out to connect with 120V;
2. Please install by professional electrician;

⚠ WARNING

Please do not match the connectors by violence, it would damage the whole set of lamps. If it does not match the lamps well, please try to joint accurately or change the lamp, do not damage the connectors by violence. Test by AVO meter before powering on.



The well made copper parts

! The deformed copper parts by violence