

HYPERLITE
www.hi-hyperlite.com

A good & brand new product. Congrats!
Enjoy brighter life now.

Feel free to contact us
Email: info@hi-hyperlite.com
Toll-free number: +1(855) 688 7879



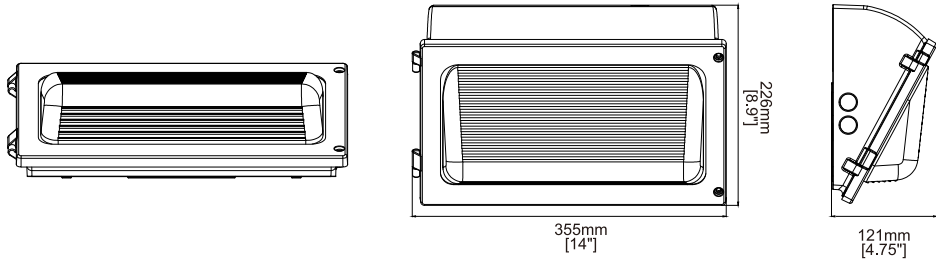
RELIABLE SOLID BRIGHT

LED WALL PACK LIGHT OVAL Series



FEATURES & SPECIFICATIONS

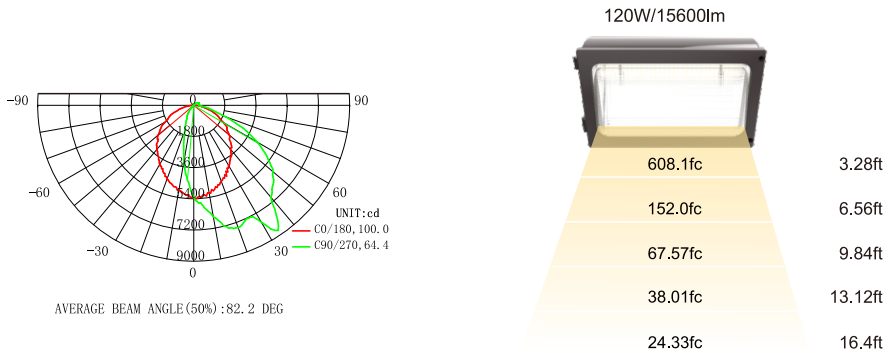
Performance Data		BWWP3-M-120W-U-50-PC
General	Lumens	15600 lm
	Efficacy	130 lm/W
	CCT	5000K
	Beam angle	Semi Cut-off
	CRI	>70
	LED	SMD 2835
	Life span	>50,000 hours
	Color finish	Bronze
Electrical	Power	120W
	Input voltage	AC120-277V
	Dimming	0~10V
	Power factor	>0.95
Physical & Listing	Temperature	-40°F~113°F
	Sensor	Photocell
	Mounting	Wall Mount
	Listing	UL
	IP rating	IP 65
	Warranty	3 Years



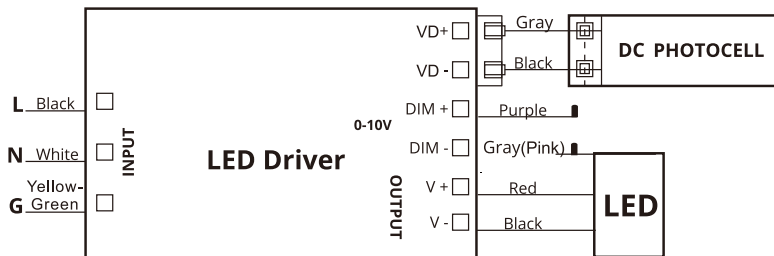
PACKAGING INFORMATION

Model	Wattage	QTY	Net Weight	Gross Weight	CTN Size
BWWP3-M-120W-U-50-PC	120W	1PC	8.3±1lbs	9.4±1lbs	15.9" * 11.0" * 7.5"
		4PCS	33.0±1lbs	40.3±1lbs	23.2" * 16.5" * 16.5"

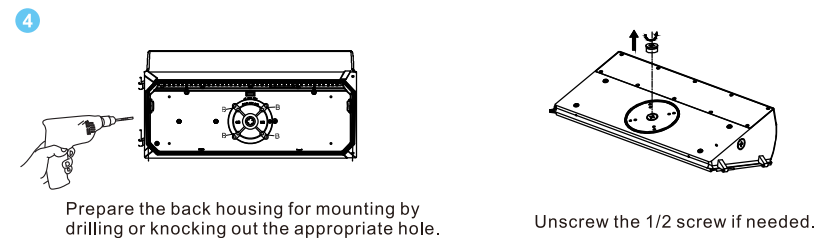
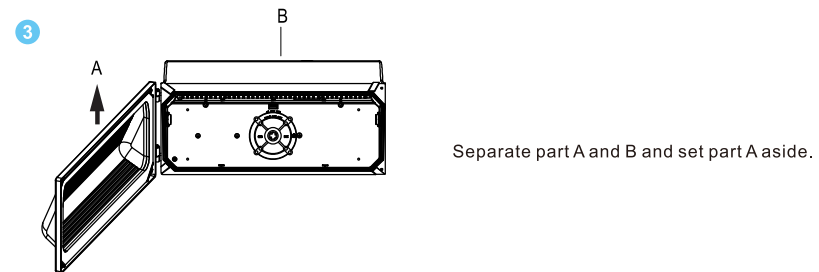
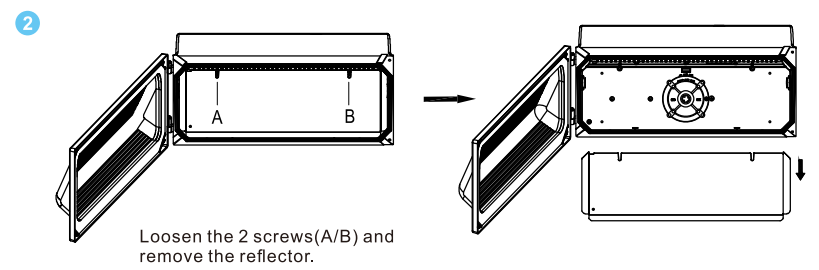
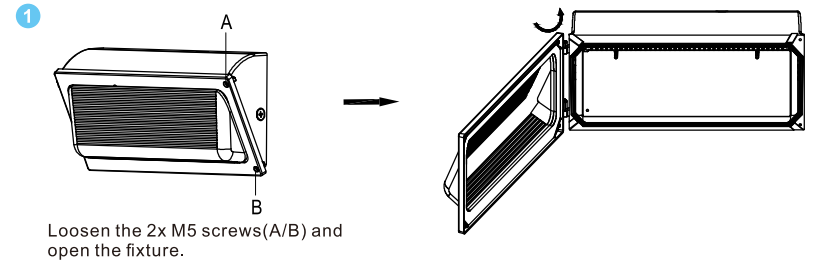
DISTRIBUTION



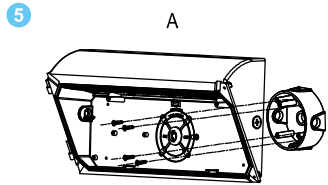
GENERAL WIRE DIAGRAM



INSTALLATION INSTRUCTIONS

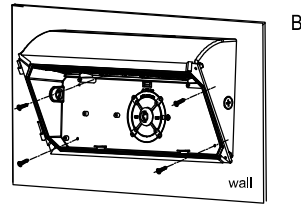


INSTALLATION INSTRUCTIONS

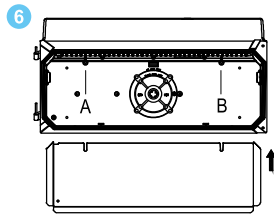


Fix the back housing to the junction box (Not included) and connect wires as per the wiring diagram.

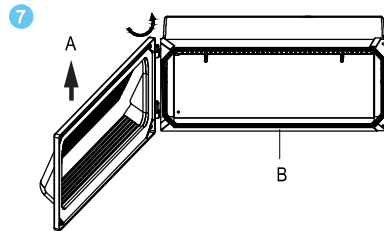
or



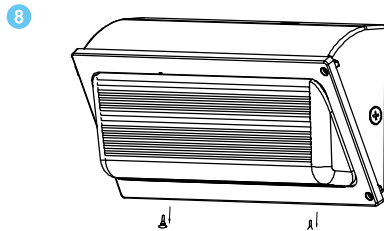
Fix the back housing to the wall and connect wires as per the wiring diagram.



Put back the reflector and tighten the 2 Screws (A/B).



Put part A back onto the hinge of part B. Check the hinge for secure.



Remove the waterproof plugs. Connect to the main electricity and check if the unit works properly.

HYPERLITE LED Luminaire

LED Wall Pack Lighting (Oval Series)

ATTENTION BEFORE YOU INSTALL
Read these instructions completely and carefully.

WARNING

RISK OF ELECTRIC SHOCK

- Turn power off before inspection, installation or removal.
- Properly ground electrical enclosure.
- Follow all NEC and local codes.
- Use only UL or IEC approved wire for input/output connections.

Prepare Electrical Wiring

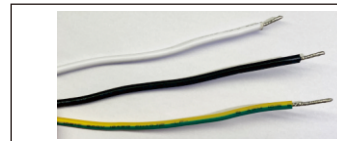
Electrical Requirements
The LED driver must be supplied with 120~277VAC, 50/60 Hz per product label and connected to an individual properly grounded branch circuit, protected by a 15 or 20 ampere circuit breaker.

Grounding Instructions
The grounding and bonding of the overall system shall be done in accordance with National Electric Code (NEC) Article 600 and local codes.

Save These Instructions

Use only in the manner intended by the manufacturer. If you have any questions, contact the manufacturer.

Note: This equipment has been tested and found to comply with the limits for a Class A digital device, pursuant to part 15 of the FCC Rules. These limits are designed to provide reasonable protection against harmful interference when the equipment is operated in a commercial environment. This equipment generates, uses, and can radiate radio frequency energy and, if not installed and used in accordance with the instruction manual, may cause harmful interference to radio communications. Operation of this equipment in a residential area is likely to cause harmful interference in which case the user will be required to correct the interference at his own expense.



*Please connect the input wire in correct way, white is ACN, black is ACL, yellow-green is GROUND connection.
*Please also make sure the wire connection is fixed perfectly before using.

APPLICATION



FOOTCANDLE LIGHT GUIDE

Footcandles are the most common unit of measure used by lighting professionals to calculate light levels in businesses and outdoor spaces. A footcandle is defined the illuminance on a one square foot surface from a uniform source of light. The Illuminating Engineering Society (IES) recommends the following footcandle levels to ensure adequate illumination and safety for occupants. Below is a guideline for common areas to assist in achieving appropriate light levels with the greatest energy-efficiency.

Building Area & Task	Average Maintained Footcandles (Horizontal) (FC)	Range of Maintained Footcandles (Horizontal) (FC)	Average Maintained Footcandles (Vertical) (FC)	Range of Maintained Footcandles (Vertical) (FC)	Comments
WAREHOUSING & STORAGE					
Bulky Items—Large Labels	10		5		
Small Items—Small Labels	30		15		
Cold Storage	30-40	10-30	10	5-15	
Open Warehouse	30-40	10-30			
Warehouse w/Aisles	30-40	10-30	10	5-15	
COMMERCIAL OFFICE					
Open Office	40	30-50			@30" Above Finished Floor (AFF)
Private Office	40	30-50			@30" AFF
Conference Room	30				Matte surface reflectance for the table 40% recommended
Restroom	18	75-30			
Lunch & Break Room	15	5-20			
EDUCATIONAL (SCHOOLS)					
Classroom	40	30-50			@30" AFF
Gymnasium					
Class I (Pro or Div. 1 College)	125		30		
Class II (Div. 2 or 3 College)	80		20		
Class III (High School)	50		150		
Class IV (Elementary)	30		100		
Auditorium	75	3-10	5	2.5-10	
Corridor	25	10-40			

□ This guide is a collaborative effort of Energy Trust of Oregon and the Lighting Design Lab, Seattle, Washington.

Building Area & Task	Average Maintained Footcandles (Horizontal) (FC)	Range of Maintained Footcandles (Horizontal) (FC)	Average Maintained Footcandles (Vertical) (FC)	Range of Maintained Footcandles (Vertical) (FC)	Comments
INDUSTRIAL/MANUFACTURING					
Assembly					
Simple (Large Item)	30		15	15-60	
Difficult (fine)	100	10-30	10	50-200	
Component Manufacturing					
Large	30	10-30	30	15-60	
Medium	70-80	25-100	50	25-100	
EXTERIOR					
Parking (Covered)	5				1FC min, 10:1 Max to Min Uniformity
Parking (Open) (Medium Activity)					
Lighting Zone 3 (Urban)	1.5	75-3	0.8	0.4-1.6	
Lighting Zone 2 (suburban)	1	0.5-2	0.6	0.3-1.2	
Gas Station Canopy	12.5	10-15			
Safety (Building Exterior)	1	0.5-2			If security is an issue—raise average level to 3
RETAIL					
General Retail (Ambient)		50			
Department Store	40	20-80	15	7.5-30	
Perimeter			75	35-150	
Accent Lighting (Displays)					3-10 times greater than ambient light levels
AUTOMOTIVE					
Showroom	70-80	25-100	10	7.5-30	
Service Area	50	25-10	30	15-30	
Sales Lot (Exterior)					
Lighting Zone 3 (Urban)	20	10-40	20	10-40	
Lighting Zone 2 (Suburban)	15	7.5-30	15	7.5-30	
GROCERY					
Circulation	20	10-40	7.5	3.5-15	
General Retail	70-80	25-100	20	10-40	
Perimeter			50	25-100	
BANKING					
ATM	20	10-40	15		Vertical at face of ATM

NOTES:

- This guide is based on information gathered from the IES "The Lighting Handbook" 10th Edition. It is highly recommended that all lighting professionals refer to the full IES guide when specifying lighting projects.
- At least half of users are in the 25 - 65 age range.

- Horizontal—horizontal plane that average maintained foot-candles are measured
- Vertical—vertical plane the average maintained foot-candles are measured
- It is the responsibility of the to determine and provide appropriate lighting levels for each space.

■ LED High Bay Light



Hero Black Series



Hero White Series



Radar Series



Saturn Series



Saturn Series



Ray Series

■ LED Wall Pack Light



Space Series



Oval Series



Wall. E Series

■ LED Area Light



Hope Series

■ LED Canopy Light



Vega Series

■ LED Flood Light



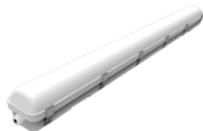
Mars Series

■ LED Grow Light



Groplanner O Series

■ Vapor Tight Light



Capsule Series

■ Temporary Work Light



Hive Series

More products...



www.hi-hyperlite.com

