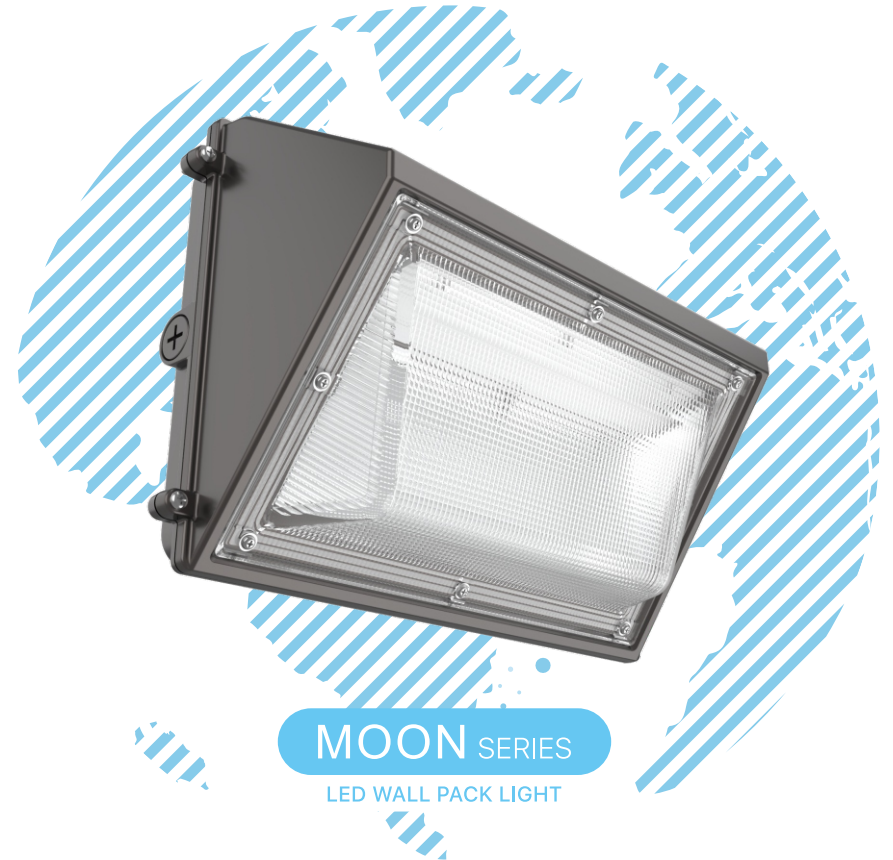


HYPERLITE
www.hi-hyperlite.com

A good & brand new product. Congrats!
Enjoy brighter life now.

Feel free to contact us
Email: service01@hi-hyperlite.com
Toll-free number: +1(855) 688 7879

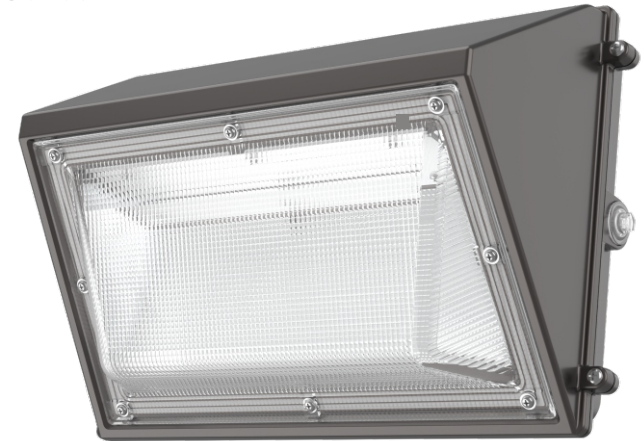


MOON SERIES
LED WALL PACK LIGHT

RELIABLE SOLID BRIGHT

LED WALL PACK LIGHT

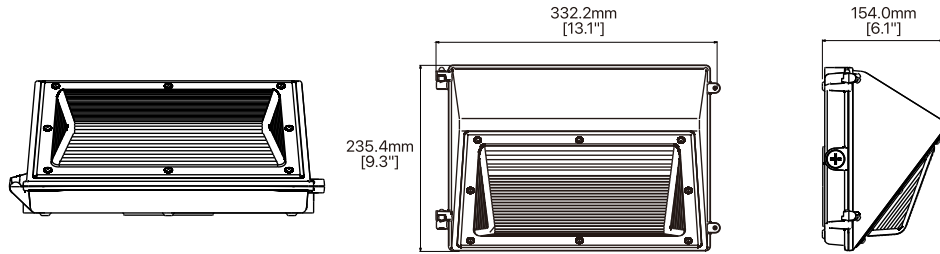
MOON Series



5 YEAR
WARRANTY

FEATURES & SPECIFICATIONS

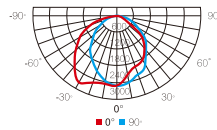
Performance Data		CES-LS-MOON-50W	CES-LS-MOON-70W	CES-LS-MOON-100W	CES-LS-MOON-120W
General	Lumens	6500 lm	9100 lm	13000 lm	15600 lm
	Efficacy	130 lm/W			
	CCT	5000K			
	Beam angle	Semi Cut-off			
	CRI	>70			
	LED	SMD 2835			
	Life span	>50,000 hours			
	Color finish	Bronze			
Electrical	Power	50W	70W	100W	120W
	Input voltage	AC100-277V			
	Dimming	0 - 10V			
	Power factor	>0.9			
Physical & Listing	Temperature	-22°F~-113°F(-30°C to 45°C)			
	Sensor	Photocell			
	Mounting	Wall Mounting			
	Listing	ETL			
	Warranty	5 Years			



PACKAGING INFORMATION

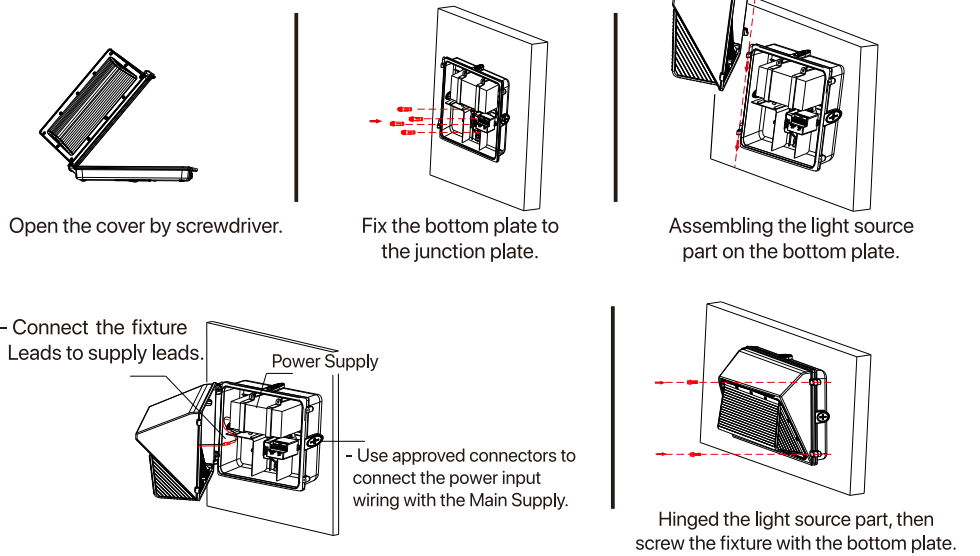
Model	Wattage	Net Weight	Gross Weight	CTN Size
CES-LS-MOON-50W	50W	4.7 ± 1 lbs	5.6 ± 1 lbs	15.2" * 11.0" * 7.8"
CES-LS-MOON-70W	70W	4.9 ± 1 lbs	5.7 ± 1 lbs	
CES-LS-MOON-100W	100W	5.9 ± 1 lbs	6.8 ± 1 lbs	
CES-LS-MOON-120W	120W	6.5 ± 1 lbs	7.4 ± 1 lbs	

DISTRIBUTION



50W/6500lm	70W/9100lm	100W/13000lm	120W/15600lm	
64.1fc	78.7fc	119.4fc	134.8fc	3.3ft
16.0fc	19.7fc	29.8fc	33.7fc	6.6ft
7.2fc	8.9fc	13.5fc	15.2fc	9.8ft
4.0fc	5.1fc	7.6fc	8.6fc	13.1ft
2.6fc	3.2fc	4.8fc	5.5fc	16.3ft

INSTALLATION INSTRUCTIONS



The photocell is a sensitive device and will be affected by external light. If your wall surface is smooth and reflective or the light around the lamp is very strong, it may affect the use effect of the photocell and cause the wallpack light to flicker continuously. If this kind of problem occurs, please don't panic, you just need to do the following:

1. Plug the frosted cap onto the phototcell. The frosted cap can weaken the influence of ambient light on the photocell; If the lamp still flashes after the frosted cap is plugged in, part of the frosted cap can be covered with black MARK pen or black adhesive tape to reduce the influence of ambient light on the photocell and ensure the normal operation of the lamp. Please refer to the picture for details.
2. If you still cannot solve the flicker problem, please contact us in time for effective help and support. HYPERLITE will make every effort to solve your problem and ensure the normal use of lamps.



HYPERLITE LED Luminaire

LED Wall Pack Lighting (MOON Series)

ATTENTION

BEFORE YOU INSTALL
Read these instructions completely and carefully.

⚠ WARNING

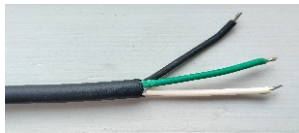
RISK OF ELECTRIC SHOCK

- Turn power off before inspection, installation or removal.
- Properly ground electrical enclosure.
- Follow all NEC and local codes.
- Use only UL or IEC approved wire for input/output connections.

Save These Instructions

Use only in the manner intended by the manufacturer.
If you have any questions, contact the manufacturer.

Note: This equipment has been tested and found to comply with the limits for a Class A digital device, pursuant to part 15 of the FCC Rules. These limits are designed to provide reasonable protection against harmful interference when the equipment is operated in a commercial environment. This equipment generates, uses, and can radiate radio frequency energy and, if not installed and used in accordance with the instruction manual, may cause harmful interference to radio communications. Operation of this equipment in a residential area is likely to cause harmful interference in which case the user will be required to correct the interference at his own expense.



*Please connect the input wire in correct way, white is ACN, black is ACL, green is GROUND connection.
*Please also make sure the wire connection is fixed perfectly before using.

Prepare Electrical Wiring



Electrical Requirements

The LED driver must be supplied with 100-277 VAC, 50/60 Hz per product label and connected to an individual properly grounded branch circuit, protected by a 15 or 20 ampere circuit breaker.



Grounding Instructions

The grounding and bonding of the overall system shall be done in accordance with National Electric Code (NEC) Article 600 and local codes.

READ THOROUGHLY BEFORE INSTALLATION

⚠ WARNING! FIXTURES MUST BE GROUNDED and installed in accordance with the National Electrical Code and all local codes. Failure to do so may increase the **RISK OF PERSONAL INJURY, PROPERTY DAMAGE, FIRE AND DEATH.**

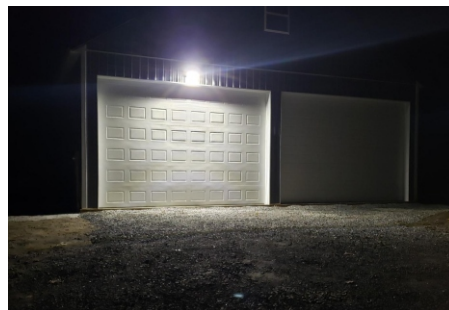
⚠ WARNING! Dangerous voltage exist within the unit and all precautions usually observed in handling high voltage equipment should be observed when replacing light engine or otherwise servicing luminaires. Disregarding this warning could result in electrical shock and possible injury to the individual installing or servicing this equipment. Installation, service and maintenance of luminaires should be done by a **qualified licensed electrician.**

⚠ CAUTION! To reduce the risk of death, personal injury or property damage from fire, electric shock, falling parts, cuts/abrasions, and other hazards please read all warnings and instructions included with and on the fixture box and all fixture labels.

⚠ NOTE!

- This equipment is only for professional installation. Non-professional personnel shall not remove or install the equipment.
- To avoid damage, falling, electric shock or fire, please do not modify the lamp or replace accessories without confirming with the supplier.
- Maintenance/installation and replacement the lamps, please confirm to cut off the power supply, and the lamps have set up a cooling. Please make sure the lamps properly installed before processing power.
- Ensure the accurate and reliable connection.
- Ensure that the product around the vent, the lamp cannot violate any fire prevention regulations when using.

Carefully read these instructions before installing product and keep it for future reference. If you do not understand these instructions, before starting any work, contact service01@hi-hyperlite.com or (855) 688-7879.



FOOTCANDLE LIGHT GUIDE

Footcandles are the most common unit of measure used by lighting professionals to calculate light levels in businesses and outdoor spaces. A footcandle is defined the illuminance on a one square foot surface from a uniform source of light. The Illuminating Engineering Society (IES) recommends the following footcandle levels to ensure adequate illumination and safety for occupants. Below is a guideline for common areas to assist in achieving appropriate light levels with the greatest energy-efficiency.

Building Area & Task	Average Maintained Footcandles (Horizontal) (FC)	Range of Maintained Footcandles (Horizontal) (FC)	Average Maintained Footcandles (Vertical) (FC)	Range of Maintained Footcandles (Vertical) (FC)	Comments
----------------------	--	---	--	---	----------

WAREHOUSING & STORAGE

Bulky Items—Large Labels	10		5		
Small Items—Small Labels	30		15		
Cold Storage	30-40	10-30	10	5-15	
Open Warehouse	30-40	10-30			
Warehouse w/Aisles	30-40	10-30	10	5-15	

COMMERCIAL OFFICE

Open Office	40	30-50			@30" Above Finished Floor (AFF)
Private Office	40	30-50			@30" AFF
Conference Room	30				Matte surface reflectance for the table 40% recommended
Restroom	18	75-30			
Lunch & Break Room	15	5-20			

EDUCATIONAL (SCHOOLS)

Classroom	40	30-50			@30" AFF
Gymnasium					
Class I (Pro or Div. 1 College)	125		30		
Class II (Div. 2 or 3 College)	80		20		
Class III (High School)	50		150		
Class IV (Elementary)	30		100		
Auditorium	75	3-10	5	2.5-10	
Corridor	25	10-40			

▲ This guide is a collaborative effort of Energy Trust of Oregon and the Lighting Design Lab, Seattle, Washington.

Building Area & Task	Average Maintained Footcandles (Horizontal) (FC)	Range of Maintained Footcandles (Horizontal) (FC)	Average Maintained Footcandles (Vertical) (FC)	Range of Maintained Footcandles (Vertical) (FC)	Comments
----------------------	--	---	--	---	----------

INDUSTRIAL/MANUFACTURING

Assembly					
Simple (Large Item)	30		15	15-60	
Difficult (fine)	100	10-30	10	50-200	
Component Manufacturing					
Large	30	10-30	30	15-60	
Medium	70-80	25-100	50	25-100	

EXTERIOR

Parking (Covered)	5				1FC min, 10:1 Max to Min Uniformity
Parking (Open) (Medium Activity)					
Lighting Zone 3 (Urban)	1.5	75-3	0.8	0.4-1.6	
Lighting Zone 2 (suburban)	1	0.5-2	0.6	0.3-1.2	
Gas Station Canopy	12.5	10-15			
Safety (Building Exterior)	1	0.5-2			If security is an issue—raise average level to 3

RETAIL

General Retail (Ambient)					
Department Store	40	20 - 80	15	7.5-30	
Perimeter			75	35-150	
Accent Lighting (Displays)					3-10 times greater than ambient light levels

AUTOMOTIVE

Showroom	70-80	25-100	10	7.5-30	
Service Area	50	25-10	30	15-30	
Sales Lot (Exterior)					
Lighting Zone 3 (Urban)	20	10-40	20	10-40	
Lighting Zone 2 (Suburban)	15	7.5-30	15	7.5-30	

GROCERY

Circulation	20	10-40	7.5	3.5-15	
General Retail	70-80	25-100	20	10-40	
Perimeter			50	25-100	

BANKING

ATM	20	10-40	15		Vertical at face of ATM
-----	----	-------	----	--	-------------------------

NOTES:

- This guide is based on information gathered from the IES 'The Lighting Handbook' 10th Edition. It is highly recommended that all lighting professionals refer to the full IES guide when specifying lighting projects.
- At least half of users are in the 25 - 65 age range.

- Horizontal—horizontal plane that average maintained foot-candles are measured.
- Vertical—vertical plane the average maintained foot-candles are measured.
- It is the responsibility of the user to determine and provide appropriate lighting levels for each space.

■ LED High Bay Light



Hero Black Series



Hero White Series



Radar Series



Saturn Series



Saturn Series



Ray Series

■ LED Wall Pack Light



Space Series



Oval Series



Wall. E Series

■ LED Area Light



Hope Series

■ LED Canopy Light



Vega Series

■ LED Flood Light



Mars Series

■ LED Grow Light



Groplanner O Series

■ Vapor Tight Light



Capsule Series

■ Temporary Work Light



Hive Series

More products...

HYPERLITE
www.hi-hyperlite.com

