

HYPERLITE
www.hi-hyperlite.com

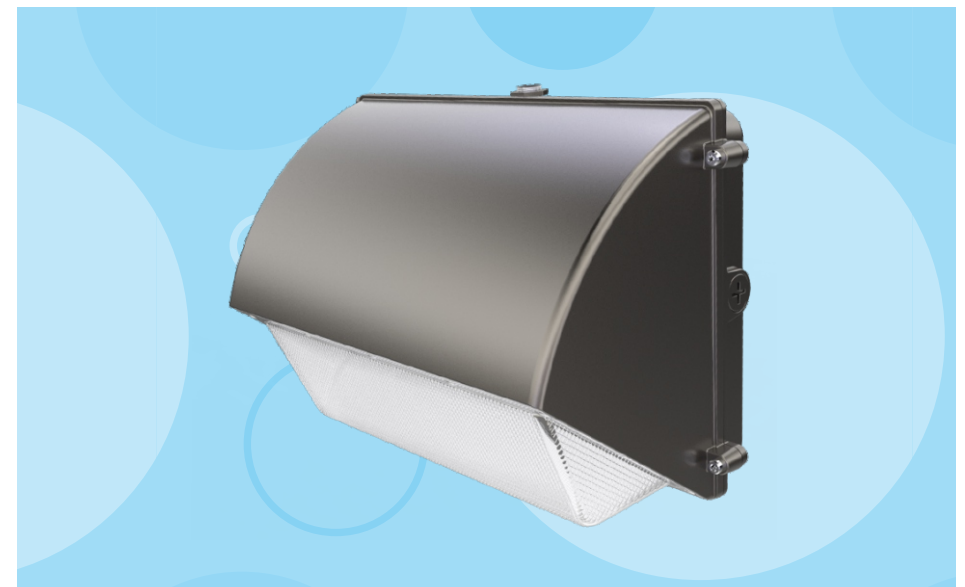
Use hyperlite LED wall pack light,
enjoy brighter life now

If you need more information about our lights,
please email us or call us 24h

Email: info@hi-hyperlite.com
Toll-free number: +1(855) 688 7879

HYPERLITE
LED LIGHTING
www.hi-hyperlite.com

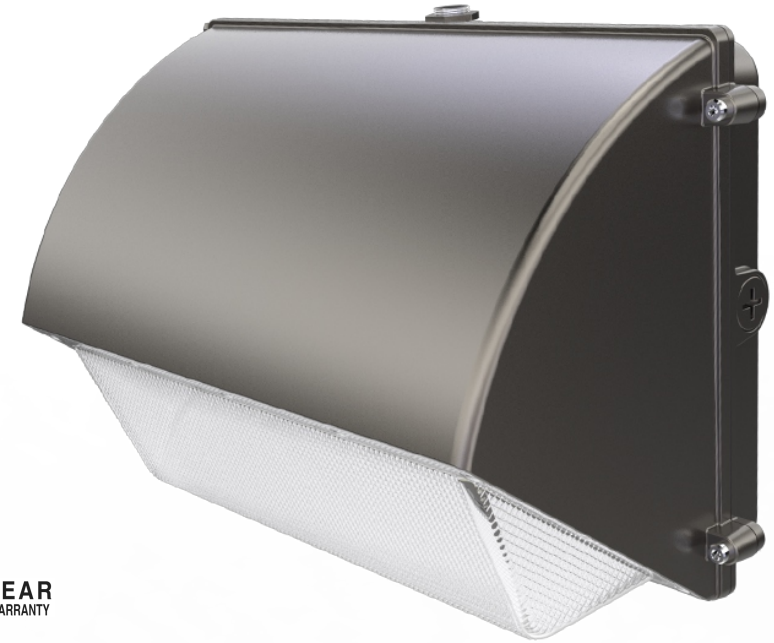
LEARN MORE
Instruction manual



Thanks for your purchase!

LED WALL PACK LIGHT

Moon series



FEATURES & SPECIFICATIONS

◆ INTENDED USE

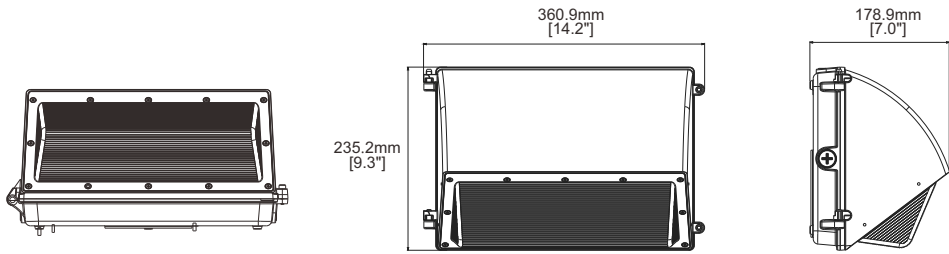
The Hyperlite LED Wall pack light is for brightly-lit outdoor applications such as stairways, tunnels, alleyways, building perimeters, security walls, overpasses, and parking garages.

◆ CONSTRUCTION

The Hyperlite Wall pack LED's feature is in fruity arc design, taking the advance of theory of conduction and convection. The housing is made of die-casting aluminum material and thermoset powder coating, corrosion and weather resistance.

◆ ELECTRICAL & FEATURE

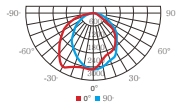
Input voltage 120-277VAC, with the wattage of 50W, 70W, 100W & 120W. Lumen maintenance at 50,000 hours. Dark bronze, DLC and UL Listed, 5-year limited warranty.



PACKAGING INFORMATION

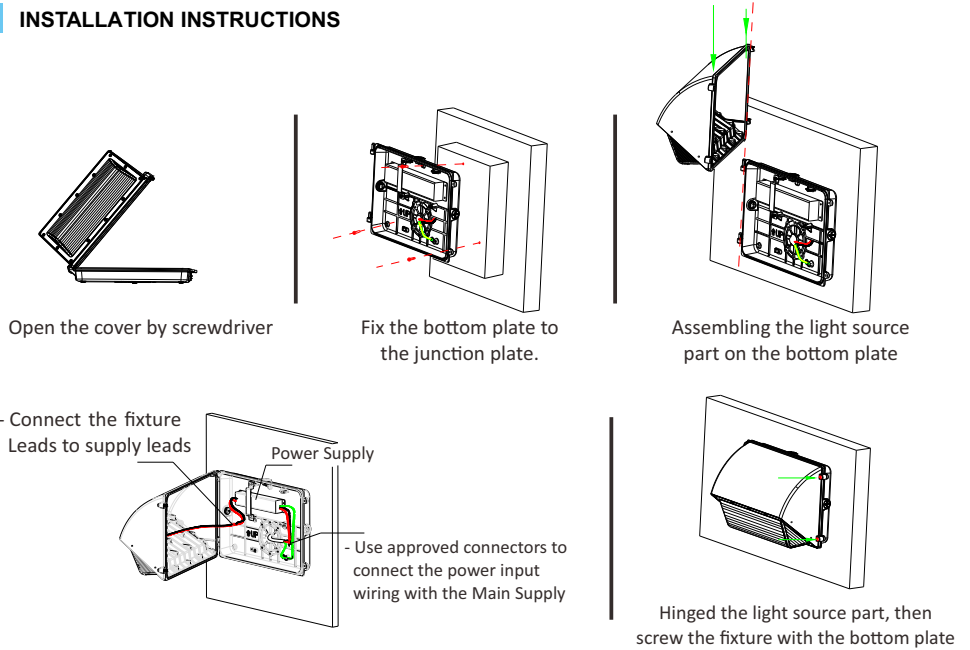
Model	Wattage	Net Weight	Gross Weight	CTN Size
CES-LS-MOON-50W	50W	4.7 lb	6.0 lb	15.3" * 7.8" * 11.0"
CES-LS-MOON-70W	70W	4.9 lb	6.2 lb	
CES-LS-MOON-100W	100W	5.7 lb	7.0 lb	
CES-LS-MOON-120W	120W	6.6 lb	7.9 lb	

DISTRIBUTION

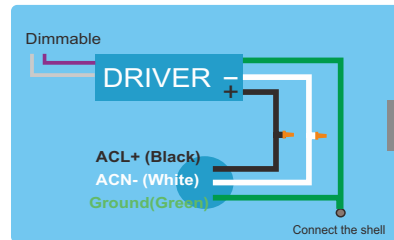


50W/6000lm	70W/9100lm	100W/13000lm	120W/15600lm	
239.3fc	308.1fc	463.1fc	584.9fc	16.3ft
59.8fc	77.0fc	115.8fc	146.2fc	13.1ft
25.5fc	34.2fc	51.5fc	65.0fc	9.8ft
14.9fc	19.3fc	28.9fc	36.6fc	6.6ft
9.5fc	12.3fc	18.2fc	23.4fc	3.3ft

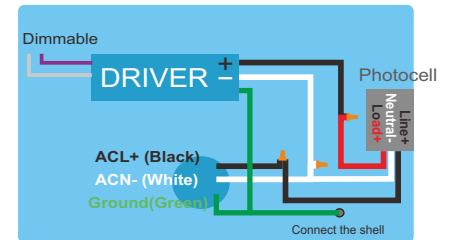
INSTALLATION INSTRUCTIONS



Non-use Photocell

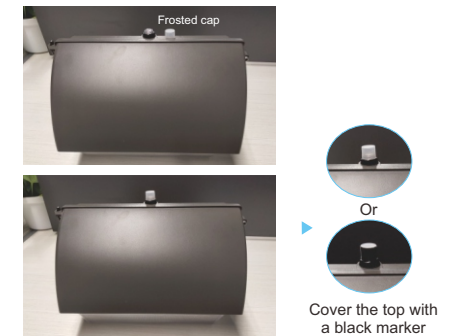


Use Photocell



The photocell is a sensitive device and will be affected by external light. If your wall surface is smooth and reflective or the light around the lamp is very strong, it may affect the use effect of the photocell and cause the wallpack light to flicker continuously. If this kind of problem occurs, please don't panic, you just need to do the following:

1. Plug the frosted cap onto the photocell. The frosted cap can weaken the influence of ambient light on the photocell; If the lamp still flashes after the frosted cap is plugged in, part of the frosted cap can be covered with black MARK pen or black adhesive tape to reduce the influence of ambient light on the photocell and ensure the normal operation of the lamp. Please refer to the picture for details.
2. If you still cannot solve the flicker problem, please contact us in time for effective help and support. HYPERLITE will make every effort to solve your problem and ensure the normal use of lamps.



HYPERLITE LED Luminaire

LED Wall Pack Lighting (Moon Series)

Features

- UL&CUL No E483348 Suitable for Wet Locations

ATTENTION

BEFORE YOU INSTALL
Read these instructions completely and carefully.

⚠ WARNING/AVERTISSEMENT

RISK OF ELECTRIC SHOCK

- Turn power off before inspection, installation or removal.
- Properly ground electrical enclosure.
- Follow all NEC and local codes.
- Use only UL or IEC approved wire for input/output connections.

Save These Instructions

Use only in the manner intended by the manufacturer.
If you have any questions, contact the manufacturer.

Prepare Electrical Wiring



Electrical Requirements

The LED driver must be supplied with 100-277 VAC, 50/60 Hz per product label and connected to an individual properly grounded branch circuit, protected by a 15 or 20 ampere circuit breaker.



Grounding Instructions

The grounding and bonding of the overall system shall be done in accordance with National Electric Code (NEC) Article 600 and local codes.



*Please connect the input wire in correct way, white is ACN, black is ACL, green is GROUND connection.
*Please also make sure the wire connection is fixed perfectly before using.

APPLICATION



FOOTCANDLE LIGHT GUIDE

Footcandles are the most common unit of measure used by lighting professionals to calculate light levels in businesses and outdoor spaces. A footcandle is defined as the illuminance on a one square foot surface from a uniform source of light. The Illuminating Engineering Society (IES) recommends the following footcandle levels to ensure adequate illumination and safety for occupants. Below is a guideline for common areas to assist in achieving appropriate light levels with the greatest energy-efficiency.

Building Area & Task	Average Maintained Footcandles (Horizontal) (FC)	Range of Maintained Footcandles (Horizontal) (FC)	Average Maintained Footcandles (Vertical) (FC)	Range of Maintained Footcandles (Vertical) (FC)	Comments
----------------------	--	---	--	---	----------

WAREHOUSING & STORAGE

Bulky Items—Large Labels	10		5		
Small Items—Small Labels	30		15		
Cold Storage	30-40	10-30	10	5-15	
Open Warehouse	30-40	10-30			
Warehouse w/Aisles	30-40	10-30	10	5-15	

COMMERCIAL OFFICE

Open Office	40	30-50			@30" Above Finished Floor (AFF)
Private Office	40	30-50			@30" AFF
Conference Room	30				Matte surface reflectance for the table 40% recommended
Restroom	18	75-30			
Lunch & Break Room	15	5-20			

EDUCATIONAL (SCHOOLS)

Classroom	40	30-50			@30" AFF
Gymnasium					
Class I (Pro or Div. 1 College)	125		30		
Class II (Div. 2 or 3 College)	80		20		
Class III (High School)	50		150		
Class IV (Elementary)	30		100		
Auditorium	75	3-10	5	2.5-10	
Corridor	25	10-40			

▲ This guide is a collaborative effort of Energy Trust of Oregon and the Lighting Design Lab, Seattle, Washington.

Building Area & Task	Average Maintained Footcandles (Horizontal) (FC)	Range of Maintained Footcandles (Horizontal) (FC)	Average Maintained Footcandles (Vertical) (FC)	Range of Maintained Footcandles (Vertical) (FC)	Comments
INDUSTRIAL/MANUFACTURING					
Assembly					
Simple (Large Item)	30		15	15-60	
Difficult (fine)	100	10-30	10	50-200	
Component Manufacturing					
Large	30	10-30	30	15-60	
Medium	70-80	25-100	50	25-100	
EXTERIOR					
Parking (Covered)	5				1FC min, 10:1 Max to Min Uniformity
Parking (Open) (Medium Activity)					
Lighting Zone 3 (Urban)	1.5	75-3	0.8	0.4-1.6	
Lighting Zone 2 (suburban)	1	0.5-2	0.6	0.3-1.2	
Gas Station Canopy	12.5	10-15			
Safety (Building Exterior)	1	0.5-2			If security is an issue—raise average level to 3
RETAIL					
General Retail (Ambient)		50			
Department Store	40	20 - 80	15	7.5-30	
Perimeter			75	35-150	
Accent Lighting (Displays)					3-10 times greater than ambient light levels
AUTOMOTIVE					
Showroom	70-80	25-100	10	7.5-30	
Service Area	50	25-10	30	15-30	
Sales Lot (Exterior)					
Lighting Zone 3 (Urban)	20	10-40	20	10-40	
Lighting Zone 2 (Suburban)	15	7.5-30	15	7.5-30	
GROCERY					
Circulation	20	10-40	7.5	3.5-15	
General Retail	70-80	25-100	20	10-40	
Perimeter			50	25-100	
BANKING					
ATM	20	10-40	15		Vertical at face of ATM

NOTES:

- This guide is based on information gathered from the IES 'The Lighting Handbook' 10th Edition. It is highly recommended that all lighting professionals refer to the full IES guide when specifying lighting projects.
- At least half of users are in the 25 - 65 age range
- Horizontal—horizontal plane that average maintained foot-candles are measured
- Vertical—vertical plane the average maintained foot-candles are measured
- It is the responsibility of the user to determine and provide appropriate lighting levels for each space

CERTIFICATE OF COMPLIANCE

UL CERTIFICATION

Certificate Number: E483348
 Report Reference: E483348
 Issue Date: 2017-DECEMBER-26



Additional Information:
 See the UL Online Certifications Directory at www.ul.com/database for additional information

- ▲ Only those products bearing the UL Certification Mark should be considered as being covered by UL's Certification and Follow-Up Service.
- ▲ Look for the UL Certification Mark on the product

NAMING RULES

CES-LS-MOON-50WXY-RSC Example: CES-LS-MOON-50W50LA-S1BZ

Base						
		X	Y	R	S	C
Series	Power	CCT	Driver	CRI	Sensor	Color
CES-LS-MOON	50W 70W 100W 120W	40 4000K 50 5000K	LA Non-dimmable LB Dimmable	Blank Ra>70	S1 Photocell	BZ Bronze

DLC CERTIFICATION

File E483348
 Project 4788072763

HOW TO SEARCH THE DLC AND GET REBATE

1. Visit official website: www.designlights.org, and input 'CES-LS-MOON', you would get all results.
2. Comparing the search result to the lights you bought, you would get some important date, such as Report Data, Zonal Lumen and so on. Our lights are all listed in DLC organization.
3. Contact local energy sector, you provide the necessary information to them, then you would get rebate.

More products...

High Bay Light
HERO Series



- Pure aluminum by cold forging, excellent heat dissipation
- High light efficiency, up to 150lm/w
- Multiple beam angle, lens or reflectors for various demands
- Super compact design, N.W.: 2.38kg; 1428pcs in 20GP container
- 5 years warranty



High Bay Light
APOLLO Series



- Classic UFO High bay, with 3D fin type heat sink, excellent heat dissipation
- Compact design without reflector, bigger PCB brings better heat conduction
- Top quality long lifespan chip with LM-80 and Meanwell driver
- High light efficiency, up to 150lm/w
- 5 years warranty



Linear High Bay
SKY Series



- Patented super slim, minimalist-inspired design
- Various beam angle: 30°/ 60°/ 90°/ 120° shelf beam 20°
- High purity profiled aluminum, with excellent heat dissipation
- Exclusive optical lens optimizes the light distribution, promotes light efficiency
- 5 years warranty



Area Light
ARES Series



- Maximum power up to 300w, up to 150lm/w
- Optimized mount kit allows single person installation
- Demountable design, easy for maintenance
- Up-to-date design, with vertical lens and gather 4 LED in one bulb
- 5 years warranty



www.hi-hyperlite.com

