

HYPERLITE
www.hi-hyperlite.com

A good & brand new product. Congrats!
Enjoy brighter life now.

Feel free to contact us
Email: service01@hi-hyperlite.com
Toll-free number: +1(855) 688 7879



RELIABLE SOLID BRIGHT

LED WALL PACK LIGHT

WALL.E Series

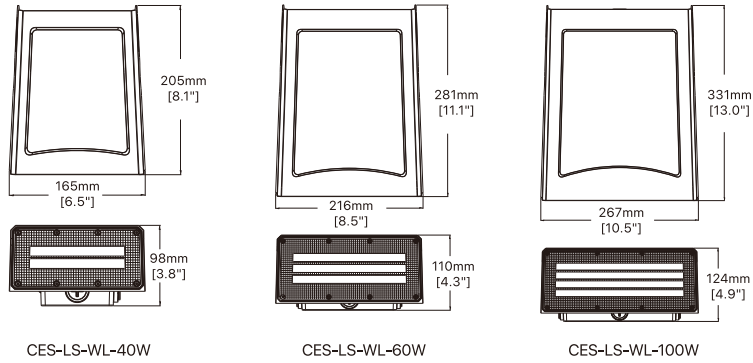


FEATURES & SPECIFICATIONS

◆ APPLICATION

Ideal for building, loading bay, commercial entryways, and more outdoor areas.

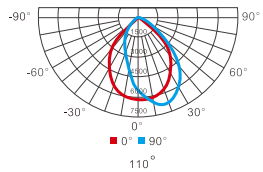
Performance Data		CES-LS-WL-40W	CES-LS-WL-60W	CES-LS-WL-100W
General	Lumens	5200 LM	7800 LM	13000 LM
	Efficacy		130 lm/W	
	CCT		5000K	
	Beam Angle		Full Cut-off	
	CRI		>70	
	LED		SMD 3030	
	Life span		>50,000 Hours	
	Color finish		Bronze	
Electrical	Power	40W	60W	100W
	Input Voltage		AC120-277V	
	Dimming		0 - 10V (Dimmer not included)	
	Power factor		>0.9	
	Surge Protection		4KV	
Physical & Listing	Temperature		-22°F-113°F(-30°C to 45°C)	
	Mounting		Wall Mounting	
	Listing		UL, cUL	
	IP Rating		IP 65	
	Warranty		5 Years	



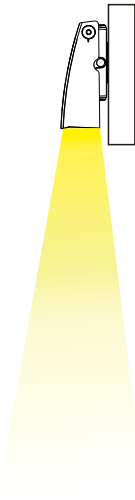
PACKAGING INFORMATION

Model	Wattage	Net Weight	Gross Weight	CTN Size
CES-LS-WL-40W	40W	2.9 ± 1 lbs	3.7 ± 1 lbs	9.6"*8.1"*5.5"
CES-LS-WL-60W	60W	4.6 ± 1 lbs	5.7 ± 1 lbs	12.5"*10.2"*6.7"
CES-LS-WL-100W	100W	6.0 ± 1 lbs	7.0 ± 1 lbs	14.7"*12.2"*6.7"

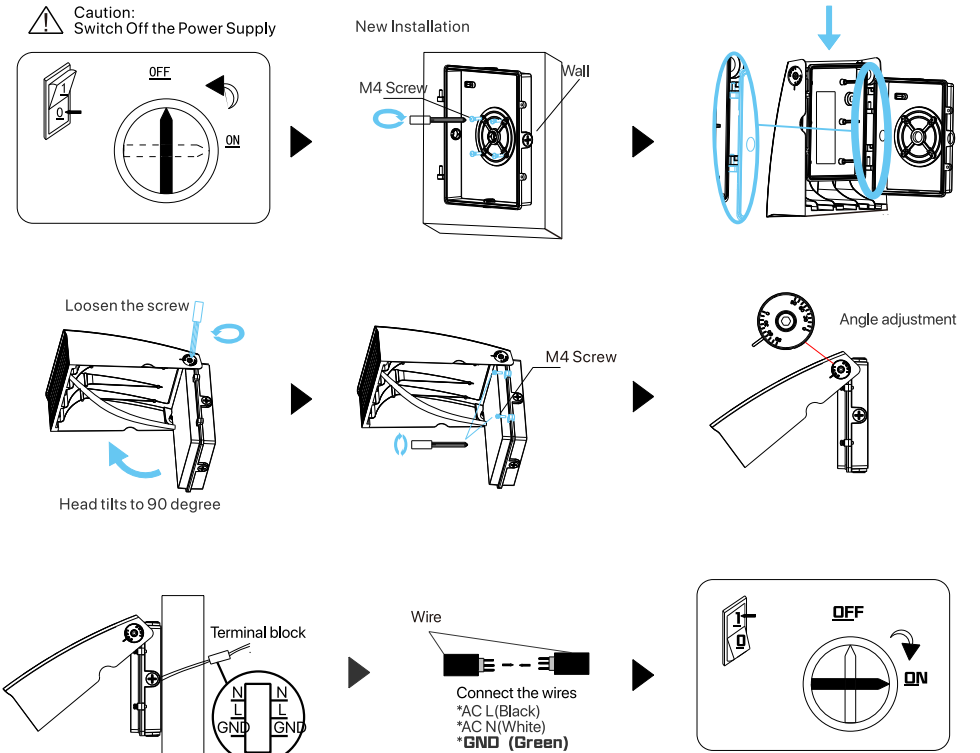
FULL CUT-OFF DISTRIBUTION



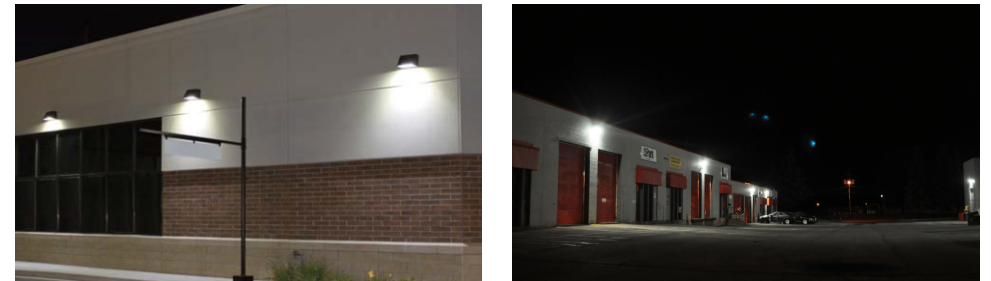
40W/5200lm 19.0fc	60W/7800lm 24.9fc	100W/13000lm 54.7fc	10ft
40W/5200lm 4.1fc	60W/7800lm 6.2fc	100W/13000lm 13.6fc	
40W/5200lm 2.4fc	60W/7800lm 3.5fc	100W/13000lm 7.7fc	25ft
40W/5200lm 1.6fc	60W/7800lm 2.2fc	100W/13000lm 4.9fc	30ft
40W/5200lm 0.8fc	60W/21000lm 1.1fc	100W/13000lm 2.5fc	42ft



INSTALLATION INSTRUCTIONS



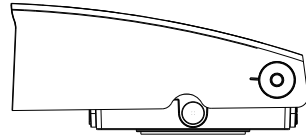
APPLICATION



**LED Wall Pack Light
(WALL.E Series)**

Features

- UL&CUL No E483348 Suitable for Wet Locations.



ATTENTION

BEFORE YOU INSTALL

Read these instructions completely and carefully.

▲ WARNING

RISK OF ELECTRIC SHOCK

- Turn power off before inspection, installation or removal.
- Properly ground electrical enclosure.
- Follow all NEC and local codes.
- Use only UL or IEC approved wire for input/output connections.

Save These Instructions

Use only in the manner intended by the manufacturer.
If you have any questions, contact the manufacturer.

Note: This equipment has been tested and found to comply with the limits for a Class A digital device, pursuant to part 15 of the FCC Rules. These limits are designed to provide reasonable protection against harmful interference when the equipment is operated in a commercial environment. This equipment generates, uses, and can radiate radio frequency energy and, if not installed and used in accordance with the instruction manual, may cause harmful interference to radio communications. Operation of this equipment in a residential area is likely to cause harmful interference in which case the user will be required to correct the interference at his own expense.

Prepare Electrical Wiring



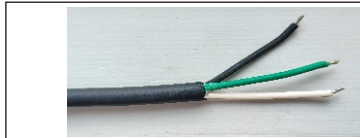
Electrical Requirements

The LED driver must be supplied with 120-277 VAC, 50/60 Hz per product label and connected to an individual properly grounded branch circuit, protected by a 15 or 20 ampere circuit breaker.



Grounding Instructions

The grounding and bonding of the overall system shall be done in accordance with National Electric Code (NEC) Article 600 and local codes.



- *Please connect the input wire in correct way, white is ACN, black is ACL, green is GROUND connection.
- *Please also make sure the wire connection is fixed perfectly before using.

READ THOROUGHLY BEFORE INSTALLATION

▲ WARNING! FIXTURES MUST BE GROUNDED and installed in accordance with the National Electrical Code and all local codes. Failure to do so may increase the **RISK OF PERSONAL INJURY, PROPERTY DAMAGE, FIRE AND DEATH.**

▲ WARNING! Dangerous voltage exist within the unit and all precautions usually observed in handling high voltage equipment should be observed when replacing light engine or otherwise servicing luminaires. Disregarding this warning could result in electrical shock and possible injury to the individual installing or servicing this equipment. Installation, service and maintenance of luminaires should be done by a **qualified licensed electrician.**

▲ CAUTION! To reduce the risk of death, personal injury or property damage from fire, electric shock, falling parts, cuts/abrasions, and other hazards please read all warnings and instructions included with and on the fixture box and all fixture labels.

▲ NOTE!

- This equipment is only for professional installation. Non-professional personnel shall not remove or install the equipment.
- To avoid damage, falling, electric shock or fire, please do not modify the lamp or replace accessories without confirming with the supplier.
- Maintenance/installation and replacement the lamps, please confirm to cut off the power supply, and the lamps have set up a cooling. Please make sure the lamps properly installed before processing power.
- Ensure the accurate and reliable connection.
- Ensure that the product around the vent, the lamp cannot violate any fire prevention regulations when using.

Carefully read these instructions before installing product and keep it for future reference. If you do not understand these instructions, before starting any work, contact service01@hi-hyperlite.com or (855) 688-7879.

CERTIFICATE OF COMPLIANCE

UL CERTIFICATION

Certificate Number: E483348

Report Reference: E483348

Issue Date: 2020-FEBRUARY-27



Additional Information:

See the UL Online Certifications Directory at www.ul.com/database for additional information.

▲ Only those products bearing the UL Certification Mark should be considered as being covered by UL's Certification and Follow-Up Service.

▲ Look for the UL Certification Mark on the product.

FOOTCANDLE LIGHT GUIDE

Footcandles are the most common unit of measure used by lighting professionals to calculate light levels in businesses and outdoor spaces. A footcandle is defined the illuminance on a one square foot surface from a uniform source of light. The Illuminating Engineering Society (IES) recommends the following footcandle levels to ensure adequate illumination and safety for occupants. Below is a guideline for common areas to assist in achieving appropriate light levels with the greatest energy-efficiency.

Building Area & Task	Average Maintained Footcandles (Horizontal) (FC)	Range of Maintained Footcandles (Horizontal) (FC)	Average Maintained Footcandles (Vertical) (FC)	Range of Maintained Footcandles (Vertical) (FC)	Comments
WAREHOUSING & STORAGE					
Bulky Items—Large Labels	10		5		
Small Items—Small Labels	30		15		
Cold Storage	30-40	10-30	10	5-15	
Open Warehouse	30-40	10-30			
Warehouse w/Aisles	30-40	10-30	10	5-15	
COMMERCIAL OFFICE					
Open Office	40	30-50			@30" Above Finished Floor (AFF)
Private Office	40	30-50			@30" AFF
Conference Room	30				Matte surface reflectance for the table 40% recommended
Restroom	18	75-30			
Lunch & Break Room	15	5-20			
EDUCATIONAL (SCHOOLS)					
Classroom	40	30-50			@30" AFF
Gymnasium					
Class I (Pro or Div. 1 College)	125		30		
Class II (Div. 2 or 3 College)	80		20		
Class III (High School)	50		150		
Class IV (Elementary)	30		100		
Auditorium	75	3-10	5	2.5-10	
Corridor	25	10-40			

▲ This guide is a collaborative effort of Energy Trust of Oregon and the Lighting Design Lab, Seattle, Washington.

Building Area & Task	Average Maintained Footcandles (Horizontal) (FC)	Range of Maintained Footcandles (Horizontal) (FC)	Average Maintained Footcandles (Vertical) (FC)	Range of Maintained Footcandles (Vertical) (FC)	Comments
INDUSTRIAL/MANUFACTURING					
Assembly					
Simple (Large Item)	30		15	15-60	
Difficult (fine)	100	10-30	10	50-200	
Component Manufacturing					
Large	30	10-30	30	15-60	
Medium	70-80	25-100	50	25-100	
EXTERIOR					
Parking (Covered)	5				1FC min, 10:1 Max to Min Uniformity
Parking (Open) (Medium Activity)					
Lighting Zone 3 (Urban)	1.5	75-3	0.8	0.4-1.6	
Lighting Zone 2 (Suburban)	1	0.5-2	0.6	0.3-1.2	
Gas Station Canopy	12.5	10-15			
Safety (Building Exterior)	1	0.5-2			If security is an issue—raise average level to 3
RETAIL					
General Retail (Ambient)					
Department Store	40	20 - 80	15	7.5-30	
Perimeter			75	35-150	
Accent Lighting (Displays)					3-10 times greater than ambient light levels
AUTOMOTIVE					
Showroom	70-80	25-100	10	7.5-30	
Service Area	50	25-10	30	15-30	
Sales Lot (Exterior)					
Lighting Zone 3 (Urban)	20	10-40	20	10-40	
Lighting Zone 2 (Suburban)	15	7.5-30	15	7.5-30	
GROCERY					
Circulation	20	10-40	7.5	3.5-15	
General Retail	70-80	25-100	20	10-40	
Perimeter			50	25-100	
BANKING					
ATM	20	10-40	15		Vertical at face of ATM

NOTES:

- This guide is based on information gathered from the IES 'The Lighting Handbook' 10th Edition. It is highly recommended that all lighting professionals refer to the full IES guide when specifying lighting projects.
- At least half of users are in the 25 - 65 age range

- Horizontal—horizontal plane that average maintained foot-candles are measured.
- Vertical—vertical plane the average maintained foot-candles are measured.
- It is the responsibility of the to determine and provide appropriate lighting levels for each space.

■ LED High Bay Light



Hero Black Series



Hero White Series



Radar Series



Saturn Series



Saturn Series



Will Series

■ LED Flood Light



Mars Series



Eyes Series

■ LED Grow Light



Groplanner O Series

■ Area Light & Canopy Garage Light



Top Series



Vega Series

■ LED Vapor Tight Light



Capsule Series

■ LED Wall Pack Light



Wall. E Series



Moon Series

■ Temporary Work Light



Hive Series

More products...

