



www.hi-hyperlite.com

Use hyperlite Led high bay light
enjoy brighter life now

If you need more information about our lights,
please email us or call us 24h

Email: info@hi-hyperlite.com

Toll-free number: +1(855) 688 7879

HYPERLITE

LED LIGHTING

www.hi-hyperlite.com

learn more

Instruction handbook



Thanks for your purchase!

LED HIGH BAY LIGHT

HERO Series



Certification:



FEATURES & SPECIFICATIONS

◆ INTENDED USE

The Hyperlite LED High bay light is the affordable LED solution for users who prefer a luminaire with the look and feel of a round form factor, Gymnasiums, warehouses, packaging facilities and other industrial applications all benefit from hyperlite's highly efficient design that saves up to 57% over traditional sources.

◆ CONSTRUCTION

Hyperlite features an aluminum heat sink to maximize heat dissipation and extend the life of the luminaire by maximizing contact with the LEDs. Plastic optical enclosure (IP65 rated) protects the LEDs from dust and other air contaminants.

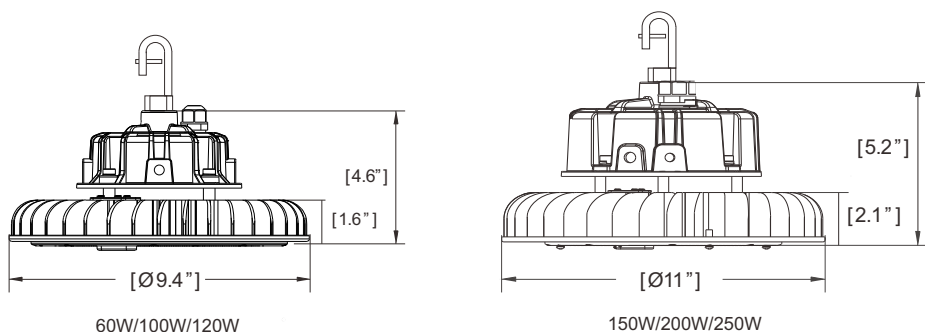
◆ ELECTRICAL

Standard 100-277VAC surge protection, tested in accordance to IEEE/ANSI standards. Input voltages include 100-277, without the use of a step down transformer. Lumen maintenance at 50,000 hours. 1(0)-10V dimming is standard for a dimming range from 10%(0%) to 100%.

◆ INSTALLATION

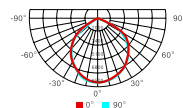
Mounting options include steel hook & cord or options Listings — Listed by UL to meet UL standards for wet location and CE, RoHS, SAA approved. DLC listing. Please check the DLC Qualified, Products list to confirm (www.designlights.org/QPL) temperatures from -40°C up to 55°C.

DIMENSTION



Model	Power	Lumens	Luminaire Efficacy	Input Voltage	Qty/Ctn	Net Weight	Gross Weight	CTN Size(inch)
CES-LS-HERO-60W	60W	8400LM	140lm/w	100-277VAC	1	5.2 ± 1 lb	6.4 ± 1 lb	11.8*11.8*7.1
CES-LS-HERO-100W	100W	14000LM				7.7 ± 1 lb	9.8 ± 1 lb	13.0*13.0*7.6
CES-LS-HERO-150W	150W	21000LM				9 ± 1 lb	10.4 ± 1 lb	
CES-LS-HERO-200W	200W	28000LM						
CES-LS-HERO-250W	250W	35000LM						

120° DISTRIBUTION



60W/8400lm 32.9fc	100W/14000lm 53.0fc	150W/21000lm 76.7fc	200W/28000lm 101.2fc	250W/35000lm 141.3fc	10ft
60W/8400lm 8.2fc	100W/14000lm 13.2fc	150W/21000lm 19.1fc	200W/28000lm 25.3fc	250W/35000lm 35.3fc	20ft
60W/8400lm 4.6fc	100W/14000lm 7.4fc	150W/21000lm 11.7fc	200W/28000lm 14.2fc	250W/35000lm 19.9fc	26ft
60W/8400lm 2.9fc	100W/14000lm 4.3fc	150W/21000lm 6.6fc	200W/28000lm 8.2fc	250W/35000lm 12.7fc	33ft
60W/8400lm 1.5fc	100W/14000lm 2.3fc	150W/21000lm 3.3fc	200W/28000lm 4.2fc	250W/35000lm 6.5fc	46ft

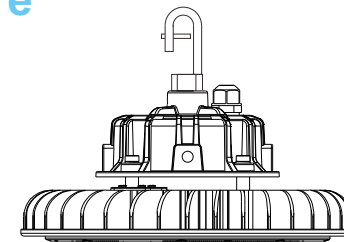


HYPERLITE LED Luminaire

Industrial LED High Bay Lighting (Hero Series)

Features

- UL&CUL No E483348 Suitable for Wet Locations
- IP65 Rated Ingress Protection



ATTENTION

BEFORE YOU INSTALL
Read these instructions completely and carefully.

⚠ WARNING/AVERTISSEMENT

RISK OF ELECTRIC SHOCK

- Turn power off before inspection, installation or removal.
- Properly ground electrical enclosure.
- Follow all NEC and local codes.
- Use only UL or IEC approved wire for input/output connections.



Electrical Requirements

The LED driver must be supplied with 100-277 VAC, 50/60 Hz per product label and connected to an individual properly grounded branch circuit, protected by a 15 or 20 ampere circuit breaker.



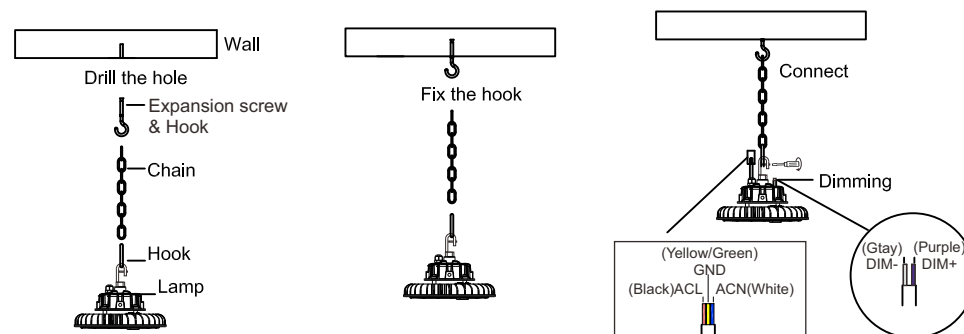
Grounding Instructions

The grounding and bonding of the overall system shall be done in accordance with National Electric Code (NEC) Article 600 and local codes.



Save These Instructions

Use only in the manner intended by the manufacturer.
If you have any questions, contact the manufacturer.

Note: This equipment has been tested and found to comply with the limits for a Class A digital device, pursuant to part 15 of the FCC Rules. These limits are designed to provide reasonable protection against harmful interference when the equipment is operated in a commercial environment. This equipment generates, uses, and can radiate radio frequency energy and, if not installed and used in accordance with the instruction manual, may cause harmful interference to radio communications. Operation of this equipment in a residential area is likely to cause harmful interference in which case the user will be required to correct the interference at his own expense.



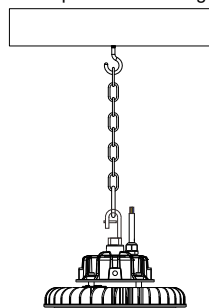
INSTALLATION

	1. Please check that the plug is in good condition. Install the lamp and plug it into the socket. Then you can test the light fixture.
	2. Please connect the input wire in correct way, black wire is L, white wire is N, green wire is ground connection. Please also make sure the wire connection is fixed perfectly before using.

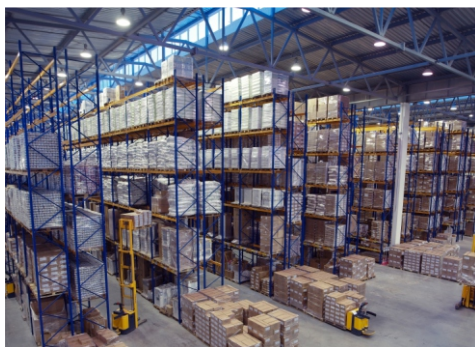
Announcements:

1. This equipment is only for professional installation. Non-professional personnel shall not remove or install the equipment.
2. Please read the instruction manual before installation and keep it for future reference.
3. To avoid damage, falling, electric shock or fire, please do not modify the lamp or replace accessories without confirming with the supplier
4. Maintenance/installation and replacement the lamps, please confirm to cut off the power supply, and the lamps have set up a cooling. Please make sure the lamps and has been properly installed before processing power.
5. Ensure the accurate and reliable connection.
6. Ensure that the product around the vent, the lamp cannot violate any fire prevention regulations when using.

Suspension Mounting



▲ Works



▲ Warehouse

FOOTCANDLE LIGHT GUIDE

Footcandles are the most common unit of measure used by lighting professionals to calculate light levels in businesses and outdoor spaces. A footcandle is defined as the illuminance on a one square foot surface from a uniform source of light. The Illuminating Engineering Society (IES) recommends the following footcandle levels to ensure adequate illumination and safety for occupants. Below is a guideline for common areas to assist in achieving appropriate light levels with the greatest energy-efficiency.

Building Area & Task	Average Maintained Footcandles (Horizontal) (FC)	Range of Maintained Footcandles (Horizontal) (FC)	Average Maintained Footcandles (Vertical) (FC)	Range of Maintained Footcandles (Vertical) (FC)	Comments
WAREHOUSING & STORAGE					
Bulky Items—Large Labels	10		5		
Small Items—Small Labels	30		15		
Cold Storage	30-40	10-30	10	5-15	
Open Warehouse	30-40	10-30			
Warehouse w/Aisles	30-40	10-30	10	5-15	
COMMERCIAL OFFICE					
Open Office	40	30-50			@30" Above Finished Floor (AFF)
Private Office	40	30-50			@30" AFF
Conference Room	30				Matte surface reflectance for the table 40% recommended
Restroom	18	75-30			
Lunch & Break Room	15	5-20			
EDUCATIONAL (SCHOOLS)					
Classroom	40	30-50			@30" AFF
Gymnasium					
Class I (Pro or Div. 1 College)	125		30		
Class II (Div. 2 or 3 College)	80		20		
Class III (High School)	50		150		
Class IV (Elementary)	30		100		
Auditorium	75	3-10	5	2.5-10	
Corridor	25	10-40			

▲ This guide is a collaborative effort of Energy Trust of Oregon and the Lighting Design Lab, Seattle, Washington.

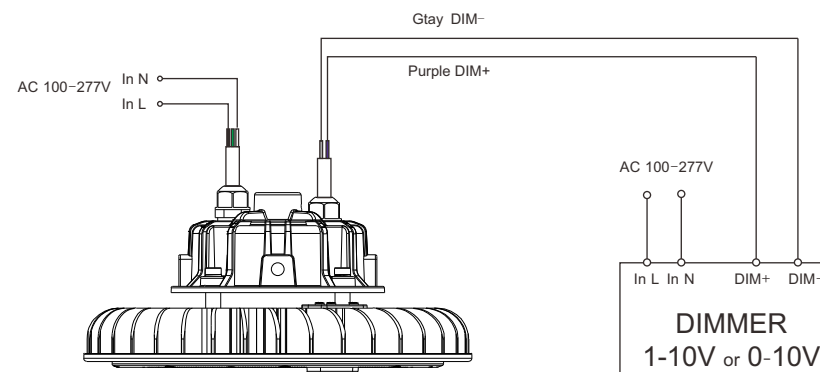
Building Area & Task	Average Maintained Footcandles (Horizontal) (FC)	Range of Maintained Footcandles (Horizontal) (FC)	Average Maintained Footcandles (Vertical) (FC)	Range of Maintained Footcandles (Vertical) (FC)	Comments
INDUSTRIAL/MANUFACTURING					
Assembly					
Simple (Large Item)	30		15	15-60	
Difficult (fine)	100	10-30	10	50-200	
Component Manufacturing					
Large	30	10-30	30	15-60	
Medium	70-80	25-100	50	25-100	
EXTERIOR					
Parking (Covered)	5				1FC min, 10:1 Max to Min Uniformity
Parking (Open) (Medium Activity)					
Lighting Zone 3 (Urban)	1.5	75-3	0.8	0.4-1.6	
Lighting Zone 2 (suburban)	1	0.5-2	0.6	0.3-1.2	
Gas Station Canopy	12.5	10-15			
Safety (Building Exterior)	1	0.5-2			If security is an issue—raise average level to 3
RETAIL					
General Retail (Ambient)		50			
Department Store	40	20 - 80	15	7.5-30	
Perimeter			75	35-150	
Accent Lighting (Displays)					3-10 times greater than ambient light levels
AUTOMOTIVE					
Showroom	70-80	25-100	10	7.5-30	
Service Area	50	25-10	30	15-30	
Sales Lot (Exterior)					
Lighting Zone 3 (Urban)	20	10-40	20	10-40	
Lighting Zone 2 (Suburban)	15	7.5-30	15	7.5-30	
GROCERY					
Circulation	20	10-40	7.5	3.5-15	
General Retail	70-80	25-100	20	10-40	
Perimeter			50	25-100	
BANKING					
ATM	20	10-40	15		Vertical at face of ATM

NOTES:

- This guide is based on information gathered from the IES 'The Lighting Handbook' 10th Edition. It is highly recommended that all lighting professionals refer to the full IES guide when specifying lighting projects.
- At least half of users are in the 25 - 65 age range
- Horizontal—horizontal plane that average maintained foot-candles are measured
- Vertical—vertical plane the average maintained foot-candles are measured
- It is the responsibility of the to determine and provide appropriate lighting levels for each space

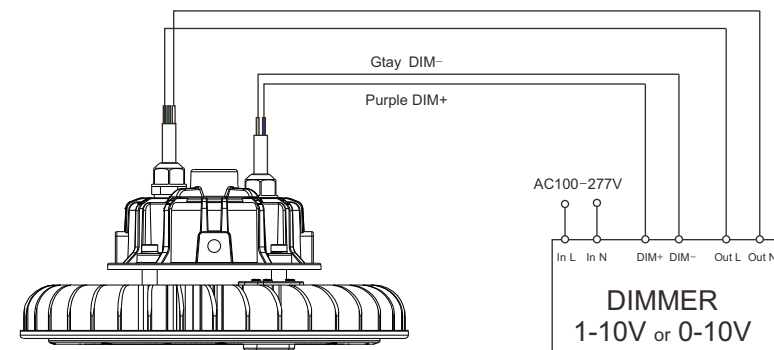
DIMMER WITHOUT LOAD

The light power supply is not powered by dimmer, This kind of connection mode is dimmer without load, which don't need to consider load power and load current, only need to consider less than effective optical current 200mA. According to each 0/1-10v adjustable light power signal current of 10mA conservative estimates there are up to 20 dimming power sources can be connected in parallel.



DIMMER WITH LOAD

- The light power supply is powered by the dimmer. The light is the load of the dimmer power supply. It is necessary to consider the load power and load current. The maximum effective load of the dimmer is 800W and the current is 10A.
- When Ac100-277V input, effective power is 800W, current is 10A; When Ac100-277V input Effective power is 400W, current is 10A
- The following is the number of dimmable power supply in parallel of two input voltages.
 - When Ac100-277V input: 800W/100W=8pcs, 10A/2A=5pcs, take the minimum value, so it can Parallel 5 dimming power supply.
 - When Ac100-277V input: 400W/100W=4pcs, 10A/2A=5pcs, take the minimum value, so it can Parallel 4 dimming power supply.



More products...

Linear High Bay SKY Series

UL LISTED CE RoHS

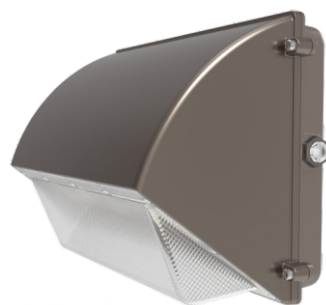
- Patented super slim, minimalist-inspired design
- Various beam angle: 30°/ 60°/ 90°/ 120°/ shelf beam 20°
- High purity profiled aluminum, with excellent heat dissipation
- Exclusive optical lens optimizes the light distribution, promotes light efficiency
- 5 years warranty



Wall Pack Light MOON Series

UL LISTED CE RoHS

- Sealed die-casting aluminum housing with powder coat finish
- Polycarbonate optical lens with UV stabilizers
- 45W replaces 150MH. Ideal for alleys, loading docks, doorway
- 5-Year Warranty



High Bay Light APOLLO Series

UL LISTED CE RoHS IP65

- Classic UFO High bay, with 3D fin type heat sink, excellent heat dissipation
- Compact design without reflector, bigger PCB brings better heat conduction
- Top quality long lifespan chip with LM-80 and Meanwell driver
- High light efficiency, up to 150lm/w
- 5 years warranty



Area Light ARES Series

UL LISTED CE RoHS IP65

- Maximum power up to 300w, up to 150lm/w
- Optimized mount kit allows single person installation
- Demountable design, easy for maintenance
- Up-to-date design, with vertical lens and gather 4 LED in one bulb
- 5 years warranty



HYPERLITE

www.hi-hyperlite.com

