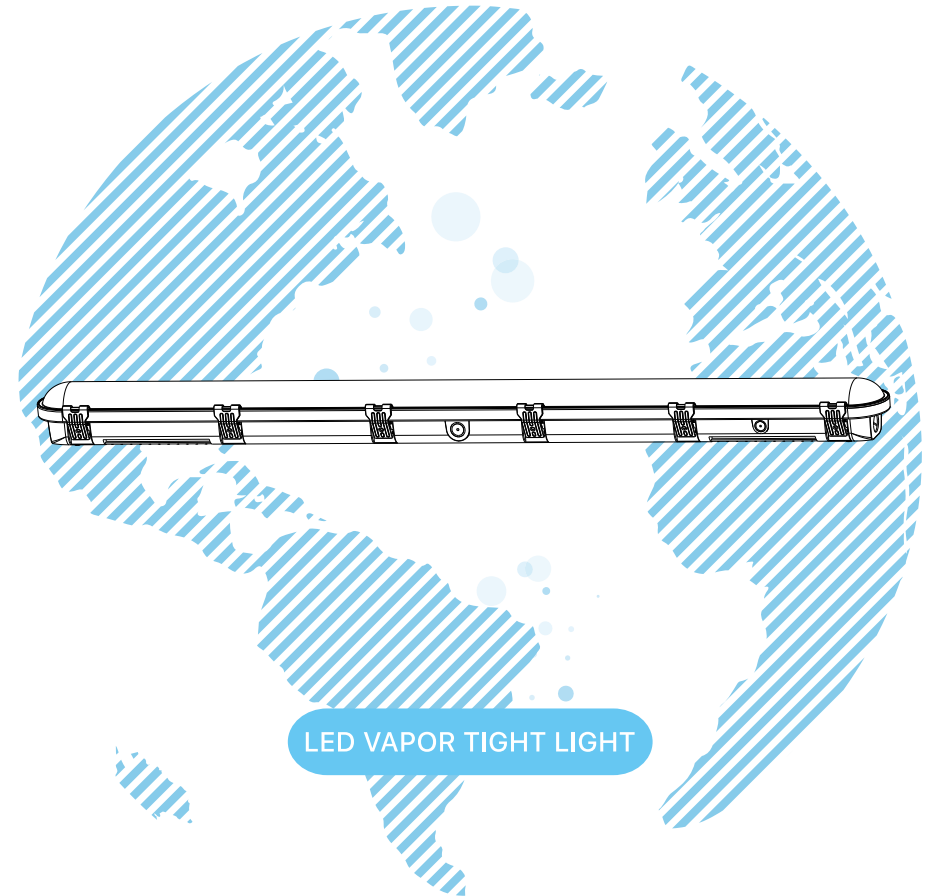


**HYPERLITE**  
www.hi-hyperlite.com

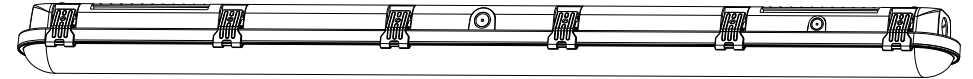
A good & brand new product. Congrats!  
Enjoy brighter life now.

Feel free to contact us  
Email: [service@hi-hyperlite.com](mailto:service@hi-hyperlite.com)  
Toll-free number: +1(855) 688 7879



RELIABLE SOLID BRIGHT

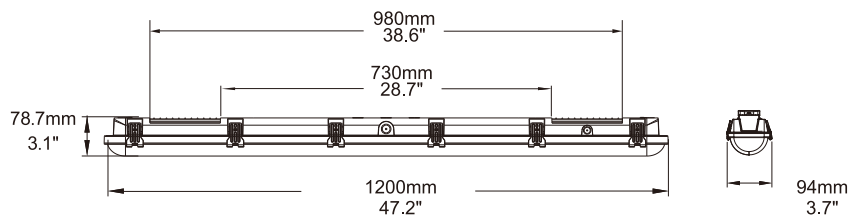
## LED VAPOR TIGHT LIGHT



### FEATURES & SPECIFICATIONS

Performance Data		VT-1200-45W/55W/65W-XXX
General	CCT	4000K/5000K/6000K (Selectable)
	Beam angle	180°
	CRI	80 Ra
	Life span	>50,000 Hours
	Color finish	White & Gray
Electrical	Power	45W/55W/65W (Selectable)
	Input voltage	AC 100-277V
	Power factor	0.9
Physical & Listing	Mounting	Surface Mounting
	Surge protection	4 KV
	IP rating	IP 65
	Warranty	3 Years
	Listing	ETL

**DIMENSION**



**PARTS LIST**



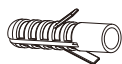
U Bracket x2



Wire Nut x3



Dry Wall Screw x4



Anchor x4

**ATTENTION**

**BEFORE YOU INSTALL**  
Read these instructions completely and carefully.

**WARNING**

**RISK OF ELECTRIC SHOCK**

- Turn power off before inspection, installation or removal.
- Properly ground electrical enclosure.
- Follow all NEC and local codes.
- Use only UL or IEC approved wire for input/output connections.

**Save These Instructions**

Use only in the manner intended by the manufacturer. If you have any questions, contact the manufacturer.

Note: This equipment has been tested and found to comply with the limits for a Class A digital device, pursuant to part 15 of the FCC Rules. These limits are designed to provide reasonable protection against harmful interference when the equipment is operated in a commercial environment. This equipment generates, uses, and can radiate radio frequency energy and, if not installed and used in accordance with the instruction manual, may cause harmful interference to radio communications. Operation of this equipment in a residential area is likely to cause harmful interference in which case the user will be required to correct the interference at his own expense.

**Prepare Electrical Wiring**



**Electrical Requirements**

The LED driver must be supplied with 100-277 VAC, 50/60 Hz per product label and connected to an individual properly grounded branch circuit, protected by a 15 or 20 ampere circuit breaker.



**Grounding Instructions**

The grounding and bonding of the overall system shall be done in accordance with National Electric Code (NEC) Article 600 and local codes.

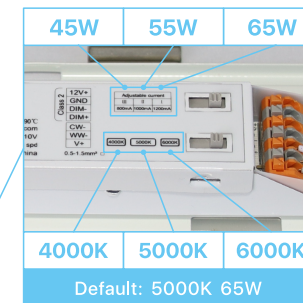
**WATTAGE & CCT SELECTABLE GUIDANCE**



1. Open the buckle of the housing.



2. Open the shell and turn over the light board to find the power supply.

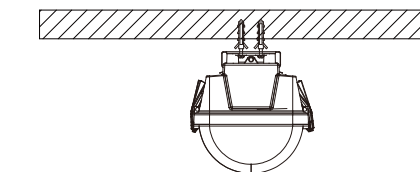
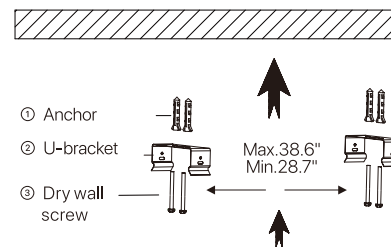


3. Adjust color temperature and power by sliding left and right according to the sign

**INSTALLATION**

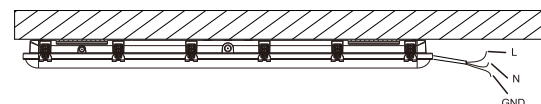
**Surface mounting**

1. Attach two U-brackets to the ceiling with anchors and dry wall screws, as shown in Figure 1 (please note that the distance between two mounting brackets must be between 28.7" and 38.6").



2. Slide one side of the lamp body into the bracket and then press the other side into it.

3. Connect the fixture wires to the main power wires (pay attention to turn off the power in advance).



<b>LED FIXTURES</b>	Black	Line
	White	Neutral
	Green	Ground

■ LED High Bay Light



Hero Black Series



Hero White Series



Radar Series



Saturn Series



Saturn Series



Will Series

■ LED Wall Pack Light



Space Series



Oval Series



Wall.E Series

■ LED Area Light



Hope Series

■ LED Canopy Light



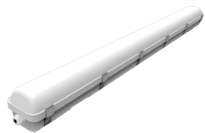
Vega Series

■ LED Flood Light



Mars Series

■ Vapor Tight Light



Capsule Series

■ Temporary Work Light



Hive Series

**HYPERLITE**  
www.hi-hyperlite.com



More products...