

Drug Information Sheet("Kusuri-no-Shiori")

Internal

Revised: 01/2020

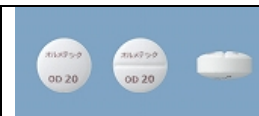
The information on this sheet is based on approvals granted by the Japanese regulatory authority. Approval details may vary by country. Medicines have adverse reactions (risks) as well as efficacies (benefits). It is important to minimize adverse reactions and maximize efficacy. To obtain a better therapeutic response, patients should understand their medication and cooperate with the treatment.

Brand name: OLMETEC OD TABLETS 20mg

Active ingredient: Olmesartan medoxomil

Dosage form: white to faintly yellowish white tablet, diameter: 7.6 mm, thickness: approx. 3.8 mm

Imprint or print on wrapping: オルメテック OD20mg, OD20, Olmetec OD20mg, 高血圧症のお薬です, 口腔内崩壊錠



Effects of this medicine

This medicine exerts a selective action on angiotensin II type 1 receptor and competitively inhibits the binding of angiotensin II in order to control blood pressure.

It is usually used to treat hypertension.

The following patients may need to be careful when using this medicine. Be sure to tell your doctor and pharmacist.

- If you have previously experienced any allergic reactions (itch, rash, etc.) to any medicines or foods.
- If you are pregnant, breastfeeding or possibly pregnant.
- If you are taking any other medicinal products. (Some medicines may interact to enhance or diminish medicinal effects. Beware of over-the-counter medicines and dietary supplements as well as other prescription medicines.)

Dosing schedule (How to take this medicine)

- Your dosing schedule prescribed by your doctor is((to be written by a healthcare professional))
- In general, for adults, take 10 to 20 mg of the active ingredient at a time, once a day. Start with 5 to 10 mg a day, then, the dose may be adjusted according to your age and symptoms. The dose can be increased up to 40 mg a day. This tablet contains 20 mg of the active ingredient. Strictly follow the instructions.
- Since the tablet dissolves in saliva when you place it on your tongue, you can take it without water. You can also take it with water.
Do not take the tablet without water when you are lying down.
- If you miss a dose, take the missed dose as soon as possible. If it is almost time for the next dose, skip the missed dose and continue your regular dosing schedule. You should never take two doses at one time.
- If you accidentally take more than your prescribed dose, consult with your doctor or pharmacist.
- Do not stop taking this medicine unless your doctor instructs you to do so.

Precautions while taking this medicine

- With your blood pressure dropping, you may feel dizzy/lightheaded. Pay attention when you work at heights, drive a car or operate dangerous machinery while you take this medicine.

Possible adverse reactions to this medicine

The most commonly reported adverse reactions include dull headache, dizziness, light headedness, cough, drowsiness and loose stool. If any of these symptoms occur, consult with your doctor or pharmacist.

The symptoms described below are rarely seen as initial symptoms of the adverse reactions indicated in brackets. If any of these symptoms occur, stop taking this medicine and see your doctor immediately.

- respiratory distress, swollen eyelids/lips/tongue, hives [angioedema]
- decreased urine output, edema, headache [renal failure]
- numbness in the limbs/lips, muscular weakness, paralysis of limbs [hyperkalaemia]
- chill, vomiting, faint, loss of consciousness [shock, syncope, loss of consciousness]
- general dullness, loss of appetite, yellowing of the skin/white of eyes [liver dysfunction, jaundice]
- nose/gum bleeding, subcutaneous bleeding [thrombocytopenia]
- sweating, palpitation, lassitude [hypoglycaemia]
- muscle pain, lassitude, reddish brown urine [rhabdomyolysis]
- itch, systemic redness, falling blood pressure, decreased consciousness, palpitation [anaphylaxis]
- nausea, severe stomachache, water-like stool [severe diarrhea]
- fever, dry cough, respiratory distress, shortness of breath [interstitial pneumonia]

The above symptoms do not describe all the adverse reactions to this medicine. Consult with your doctor or pharmacist if you notice any symptoms of concern other than those listed above.

Storage conditions and other information

- Keep out of reach of children. Store away from direct sunlight, heat and moisture.

•Discard the remainder. Do not store them.

For healthcare professional use only / /

For further information, talk to your doctor or pharmacist.