

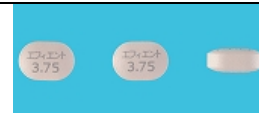
# Drug Information Sheet("Kusuri-no-Shiori")

Internal

Revised: 12/2021

The information on this sheet is based on approvals granted by the Japanese regulatory authority. Approval details may vary by country. Medicines have adverse reactions (risks) as well as efficacies (benefits). It is important to minimize adverse reactions and maximize efficacy. To obtain a better therapeutic response, patients should understand their medication and cooperate with the treatment.

**Brand name:**EFIENT TABLETS 3.75mg [prevention of recurrence following ischemic cerebrovascular disease (associated with large-artery atherosclerosis or small-vessel occlusion)]



**Active ingredient:**Prasugrel hydrochloride

**Dosage form:**faint reddish white tablet, major axis: 7.3 mm, minor axis: 5.1 mm, thickness: approximately 3.2 mm

**Imprint or print on wrapping:**エフィエント 3.75mg, Efient 3.75mg, 抗血小板剤

## Effects of this medicine

This medicine suppresses platelet aggregation caused by platelet activation and inhibits blood clotting to prevent recurrence of thrombosis.

It is usually used for prevention of recurrence of ischemic cerebrovascular disease following the former appearance of ischemic cerebrovascular disease associated with large-artery atherosclerosis or small-vessel occlusion restricted to cases with either hypertension, dyslipidemia, diabetes mellitus, chronic kidney disease or a history of cerebral infarction before the last episode of attack.

## The following patients may need to be careful when using this medicine. Be sure to tell your doctor and pharmacist.

- If you have previously experienced any allergic reactions (itch, rash, etc.) to any medicines or foods.  
If you have: hypertension or hepatic/renal disease.  
If you are bleeding, underweight (50 kg or less) or scheduled for surgery/tooth extraction.
- If you are pregnant or breastfeeding.
- If you are taking any other medicinal products. (Some medicines may interact to enhance or diminish medicinal effects. Beware of over-the-counter medicines and dietary supplements as well as other prescription medicines.)

## Dosing schedule (How to take this medicine)

- Your dosing schedule prescribed by your doctor is(( to be written by a healthcare professional))
- In general, for adults, take 1 tablet of 3.75 mg tablet (3.75 mg of prasugrel) at a time once a day. This medicine is 3.75 mg tablet. Strictly follow the instructions.
- Avoid taking this medicine on an empty stomach.
- If you miss a dose, take a dose as soon as possible. If it is almost time for the next dose, skip the missed dose and continue your regular dosing schedule. You should never take two doses at one time.
- If you accidentally take more than your prescribed dose, consult with your doctor or pharmacist.
- Do not stop taking this medicine unless your doctor instructs you to do so.

## Precautions while taking this medicine

- This medicine will cause bleeding tendency. If abnormal/prolonged bleeding occurs, consult with your doctor.

## Possible adverse reactions to this medicine

The most commonly reported adverse reactions include subcutaneous bleeding, nasal bleeding, bloody urine, hematoma at the site of vessel puncture and subcutaneous hematoma. If any of these symptoms occur, consult with your doctor or pharmacist.

**The symptoms described below are rarely seen as initial symptoms of the adverse reactions indicated in brackets. If any of these symptoms occur, stop taking this medicine and see your doctor immediately.**

- headache, nausea, decreased consciousness, paralysis of face/limbs on one side, abdominal pain, chest pain [bleeding]
- malaise, purpura, impaired consciousness [thrombotic thrombocytopenic purpura]
- hives, swelling of eyelids/lips/tongue, breathing difficulty [hypersensitivity]
- nausea, vomiting, yellowing of the skin or white of eyes [liver dysfunction, jaundice]
- sore throat, headache, general malaise, anemia symptoms, bleeding tendency [agranulocytosis, pancytopenia included aplastic anemia]

**The above symptoms do not describe all the adverse reactions to this medicine. Consult with your doctor or pharmacist if you notice any symptoms of concern other than those listed above.**

## Storage conditions and other information

- Keep out of the reach of children. Store away from direct sunlight, heat and moisture.
- Discard the remainder. Do not store them.

**For healthcare professional use only** / /

For further information, talk to your doctor or pharmacist.