

Drug Information Sheet("Kusuri-no-Shiori")

Internal

Revised: 12/2022

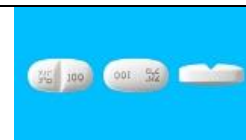
The information on this sheet is based on approvals granted by the Japanese regulatory authority. Approval details may vary by country. Medicines have adverse reactions (risks) as well as efficacies (benefits). It is important to minimize adverse reactions and maximize efficacy. To obtain a better therapeutic response, patients should understand their medication and cooperate with the treatment.

Brand name: AVAPRO Tablets 100mg

Active ingredient: Irbesartan

Dosage form: white to yellowish white tablet (major axis: approx. 11.1 mm, minor axis: approx. 5.8 mm, thickness: approx. 3.9 mm)

Imprint or print on wrapping: アバプロ 100 mg, アバプロ, 100 mg, AVAPRO 100 mg, 100



Effects of this medicine

This medicine is a competitive antagonist for angiotensin II type 1 receptors, and decreases blood pressure. It is usually used to treat hypertension.

The following patients may need to be careful when using this medicine. Be sure to tell your doctor and pharmacist.

- If you have previously experienced any allergic reactions (itch, rash, etc.) to any medicines or foods.
- If you have diabetes mellitus.
- If you have renal artery stenosis.
- If you have hyperkalemia.
- If you are pregnant, possibly pregnant or breastfeeding.
- If you are taking any other medicinal products. (Some medicines may interact to enhance or diminish medicinal effects. Beware of over-the-counter medicines and dietary supplements as well as other prescription medicines.)

Dosing schedule (How to take this medicine)

- Your dosing schedule prescribed by your doctor is((to be written by a healthcare professional))
- In general, for adults, take half to one tablet (50 to 100 mg of the active ingredient) at a time, once day. The dosage may be adjusted according to your age or symptoms, however, the maximum daily dose is limited to 2 tablets (200 mg). Strictly follow the instructions.
- If you miss a dose, take the missed dose as soon as possible. However, it is almost time for the next dose, skip the missed dose and continue your regular dosing schedule. You should never take two doses at one time.
- If you accidentally take more than your prescribed dose, consult with your doctor or pharmacist.
- Do not stop taking this medicine unless your doctor instructs you to do so.

Precautions while taking this medicine

- The medicine may cause dizziness or lightheadedness due to decreased blood pressure. Pay attention when you work at heights, drive a car or operate dangerous machinery.

Possible adverse reactions to this medicine

The most commonly reported adverse reactions include dizziness, cough, headache, palpitations and nausea. If any of these symptoms occur, consult with your doctor or pharmacist.

The symptoms described below are rarely seen as initial symptoms of the adverse reactions indicated in brackets. If any of these symptoms occur, stop taking this medicine and see your doctor immediately.

- breathing difficulty, swelling of face, tongue or throat [angioedema]
- weakness of the limbs, numbness of lips, muscle weakness [hyperkalemia]
- vomiting, faint, loss of consciousness [shock, syncope, unconsciousness]
- edema, general malaise, decreased urine output, anuria [renal failure]
- general malaise, vomiting, yellowing of the skin and the white of eyes [hepatic dysfunction, jaundice]

The above symptoms do not describe all the adverse reactions to this medicine. Consult with your doctor or pharmacist if you notice any symptoms of concern other than those listed above.

Storage conditions and other information

- Keep out of the reach of children. Store at room temperature (1 to 30 degrees Celsius) away from direct sunlight and moisture.
- Discard the remainder. Do not store them. If you do not know how to dispose of it, please consult the pharmacy or medical institution where you received it. Please do not give it to others.

For healthcare professional use only / /

For further information, talk to your doctor or pharmacist.