



USER MANUAL

For use with All Gobi Heat Heated Jackets,
Hoodies, Vests, and Baselayer Pants



CONTENTS

Safety Information	1
Heated Jackets and Hoodies	2
SAHARA NOMAD VICTORIA RIDGE SHIFT FLASH SHADOW	
Heated Vests	4
DUNE	
Heated Pants	6
BASECAMP	
Contact Information	8

Washing Instructions:

1. Remove battery from heated clothing.
2. Place connector cable back into battery pocket.
3. Zip the battery pocket closed
4. Wash on gentle washing and drying cycles.

SAFETY INFORMATION

Infants; children; persons requiring close supervision; or anyone insensitive to heat, such as a person with poor circulation, should not use this product.

Never use if inner lining is wet.

Heating elements should not be allowed to touch bare skin

Shut off power immediately if discomfort occurs.

Do not allow the cords to be pinched.

Discontinue use of this product if it stops working correctly or heats inconsistently.

Do not use pins on or around this jacket as they can cause damage to the wiring.

Remove the battery pack from the battery pocket before washing. Be sure to secure the connector into the battery pocket before washing.

Do not dry clean. Do not use dry-cleaning fluid on this item. Do not bleach. Cleaning solvents may have a detrimental effect on the insulation of the heating elements.

Do not iron.

Do not remove sewn in labels. These carry important information.

The device may interfere with other electronic devices such as pacemakers and more. Consult with your doctor before use.

Do not use if you have impaired temperature sensitivity. Consult with your doctor before use.

Keep the product out of the reach of small children, as it contains small parts which could be easily swallowed.

Always turn off the device and disconnect the batteries when it is not in use.

This item should be serviced by a qualified repair person using only identical replacement parts.

CAUTION! If you feel uncomfortable tingling heat or if the skin turns red, there is a risk of burns. Turn off the device immediately and stop use immediately. Read the safety information carefully before first use.

HEATED JACKETS AND HOODIES

SAHARA | NOMAD | VICTORIA | RIDGE | SHIFT | FLASH | SHADOW | GRIT | IBEX

USING YOUR JACKET/HOODIE

1. Unzip the battery holder pocket located inside the jacket on the left front.
2. Insert the power cable from inside the battery holder pocket into the power cable port on the battery
3. Place the connected battery into the holder pocket and zip closed.
4. To remove the battery, unzip the battery holder pocket, remove the battery, and disconnect the power cable
5. Hold the power button down for 3-5 seconds to turn on the jacket
6. The power button will display 1 orange bar at first (low). Pressing the button will let you adjust the heat level. 1 bar (low), 2 bars (medium), 3 bars (high)
7. To turn off the jacket, hold the power button down for 3-5 seconds

CHARGING THE BATTERY

1. Insert the charger's connector into the battery power cable port.
2. Plug the charger into the wall outlet.
3. The charger's red light will come on indicating the battery is being charged.
4. After charging is complete, the charger light will turn to green.

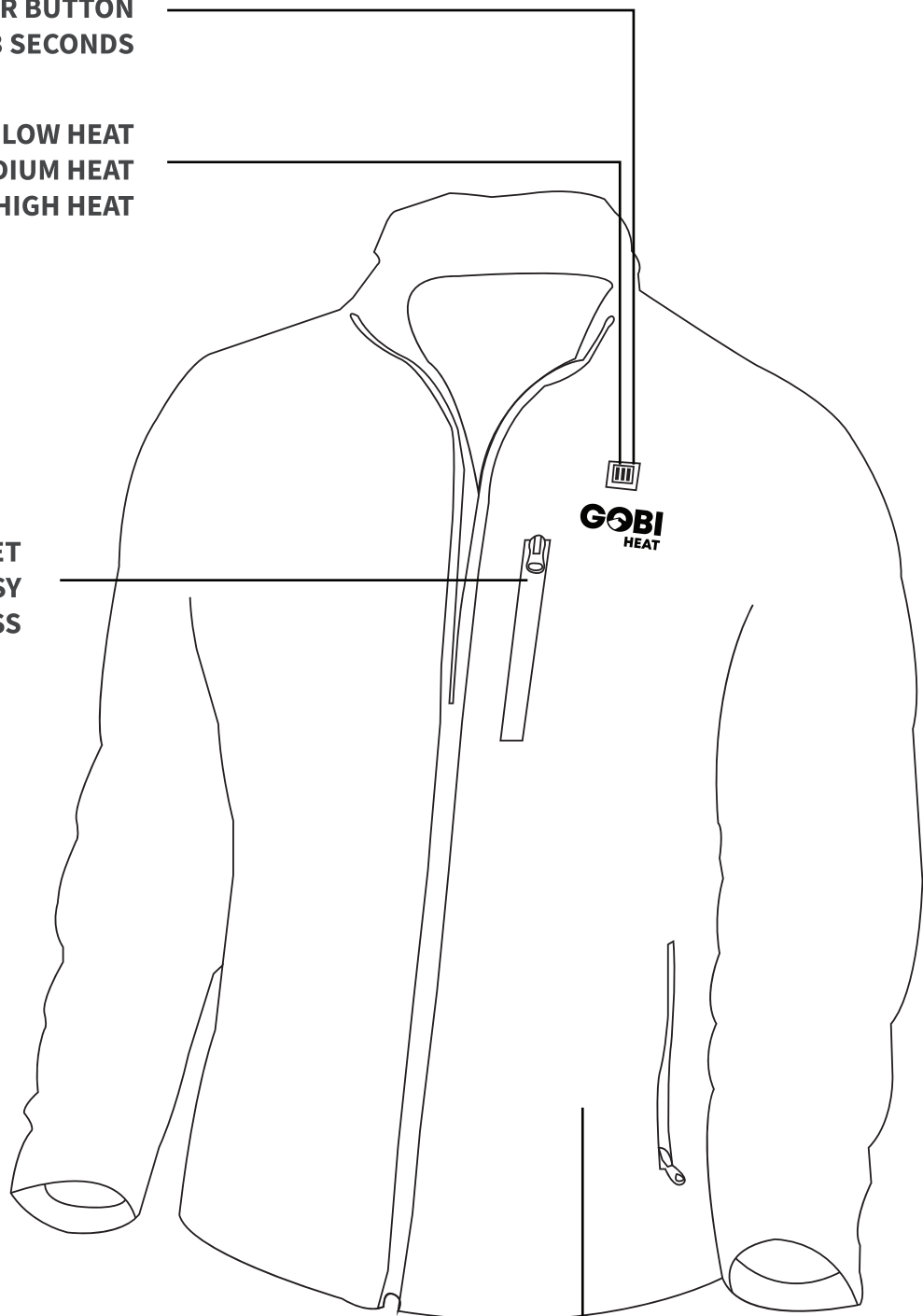


**TO TURN ON/OFF
HOLD POWER BUTTON
FOR 3 SECONDS**

**1 BAR = LOW HEAT
2 BARS = MEDIUM HEAT
3 BARS = HIGH HEAT**

**EXTRA POCKET
PLACED FOR EASY
ACCESS**

**BATTERY HOLDER POCKET
LOCATED INSIDE THE JACKET
ON THE LEFT FRONT SIDE**



HEATED VESTS

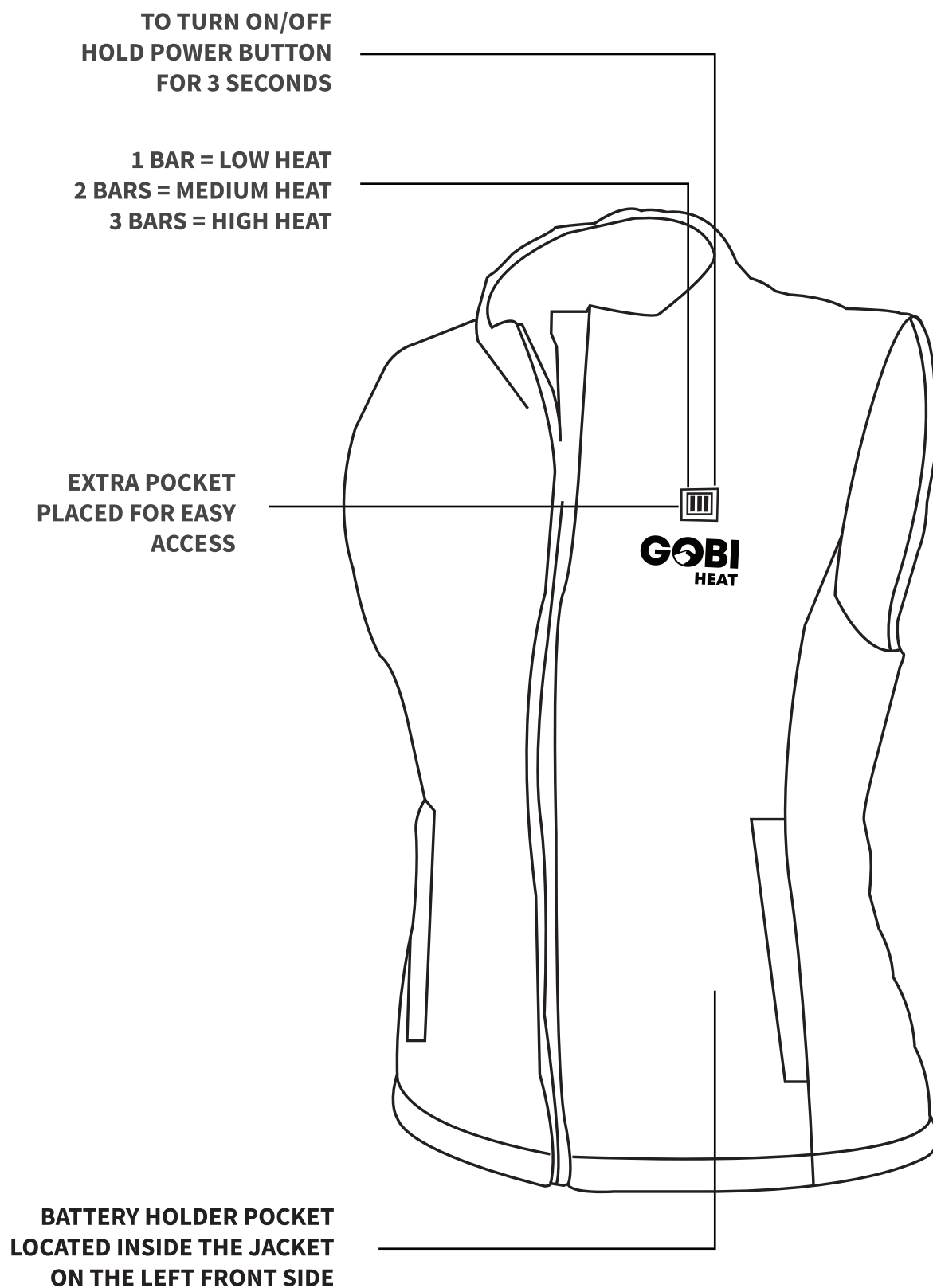
DUNE

USING YOUR HEATED VEST

1. Unzip the battery holder pocket located inside the vest on the left front.
2. Insert the power cable from inside the battery holder pocket into the power cable port on the battery
3. Place the connected battery into the holder pocket and zip closed.
4. To remove the battery, unzip the battery holder pocket, remove the battery, and disconnect the power cable
5. Hold the power button down for 3-5 seconds to turn on the vest
6. The power button will display 1 orange bar at first (low). Pressing the button will let you adjust the heat level. 1 bar (low), 2 bars (medium), 3 bars (high)
7. To turn off the vest, hold the power button down for 3-5 seconds

CHARGING THE BATTERY

1. Insert the charger's connector into the battery power cable port.
2. Plug the charger into the wall outlet.
3. The charger's red light will come on indicating the battery is being charged.
4. After charging is complete, the charger light will turn to green.



HEATED PANTS

BASECAMP

USING YOUR JACKET/HOODIE

1. Unzip the battery holder pocket located on the front left hip.
2. Insert the power cable from inside the battery holder pocket into the power cable port on the battery
3. Place the connected battery into the holder pocket and zip closed.
4. To remove the battery, unzip the battery holder pocket, remove the battery, and disconnect the power cable
5. Hold the power button down for 3-5 seconds to turn on the pants
6. The power button will display 1 orange bar at first (low). Pressing the button will let you adjust the heat level. 1 bar (low), 2 bars (medium), 3 bars (high)
7. To turn off the pants, hold the power button down for 3-5 seconds

CHARGING THE BATTERY

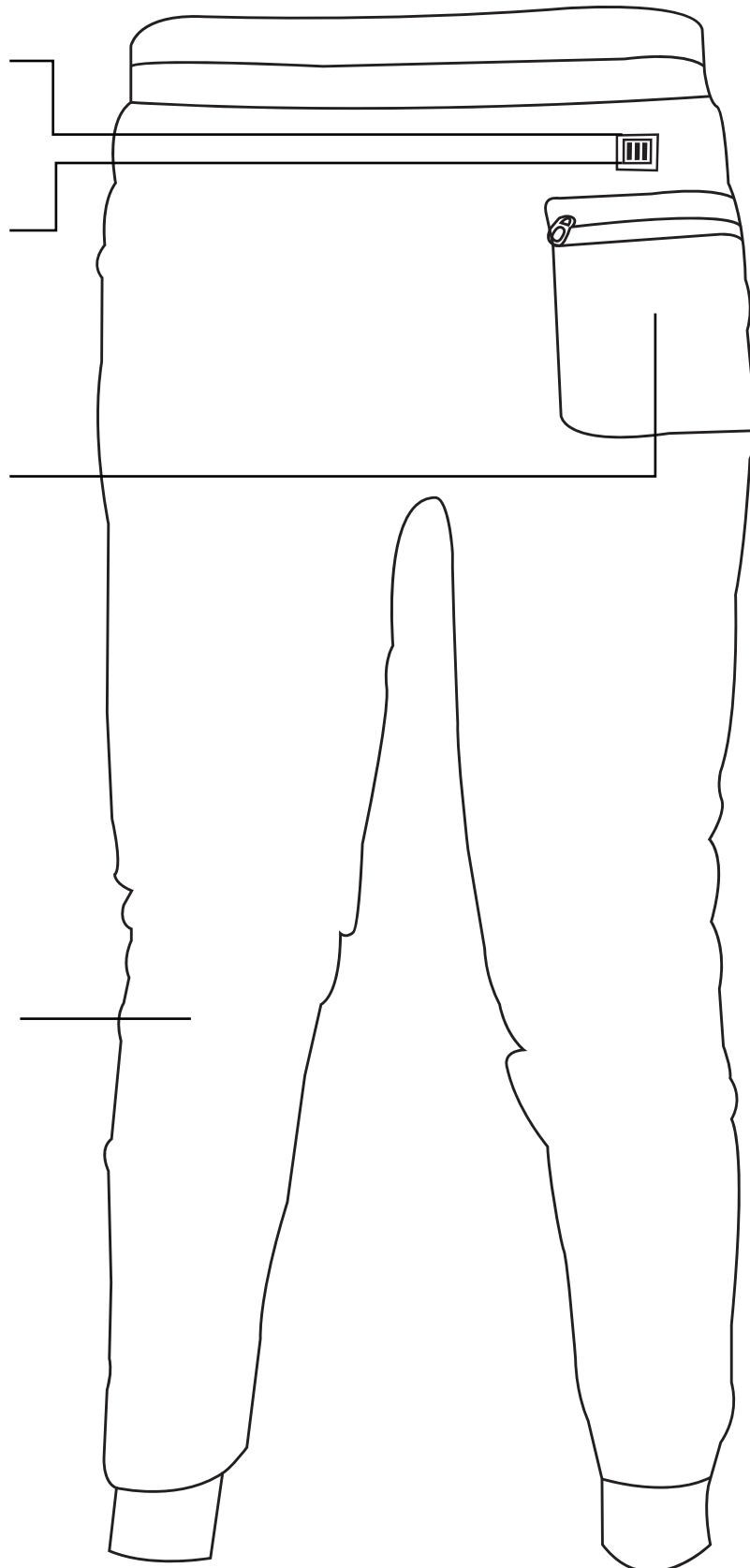
1. Insert the charger's connector into the battery power cable port.
2. Plug the charger into the wall outlet.
3. The charger's red light will come on indicating the battery is being charged.
4. After charging is complete, the charger light will turn to green.

**TO TURN ON/OFF
HOLD POWER BUTTON
FOR 3 SECONDS**

**1 BAR = LOW HEAT
2 BARS = MEDIUM HEAT
3 BARS = HIGH HEAT**

**BATTERY HOLDER
POCKET LOCATED ON
THE FRONT LEFT**

**BUILT TO FIT INSIDE
MOST OUTDOOR PANTS**





(801) 228 - 1948

customerservice@gobiheat.com

For all questions, concerns, or
warranty exchanges