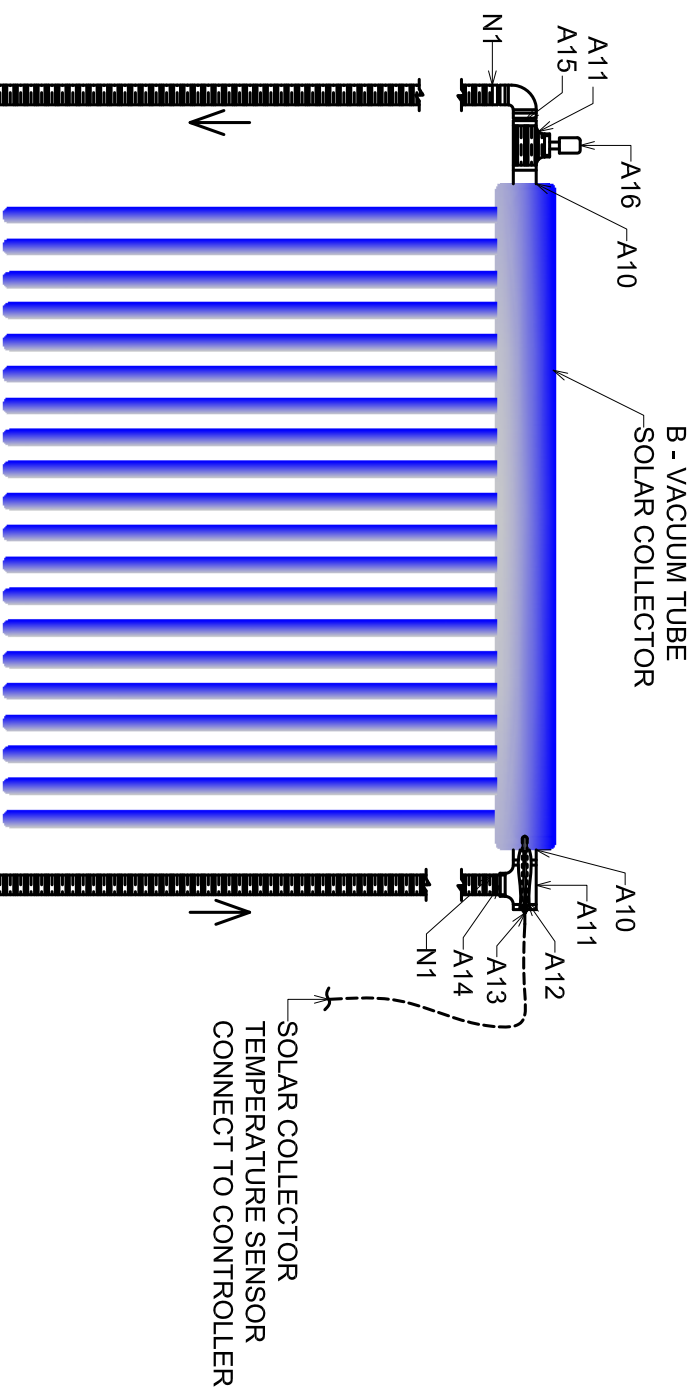
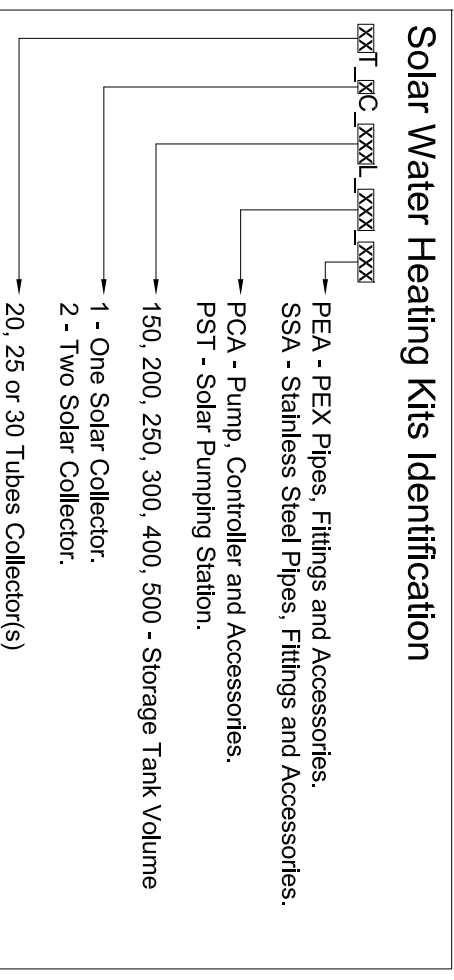


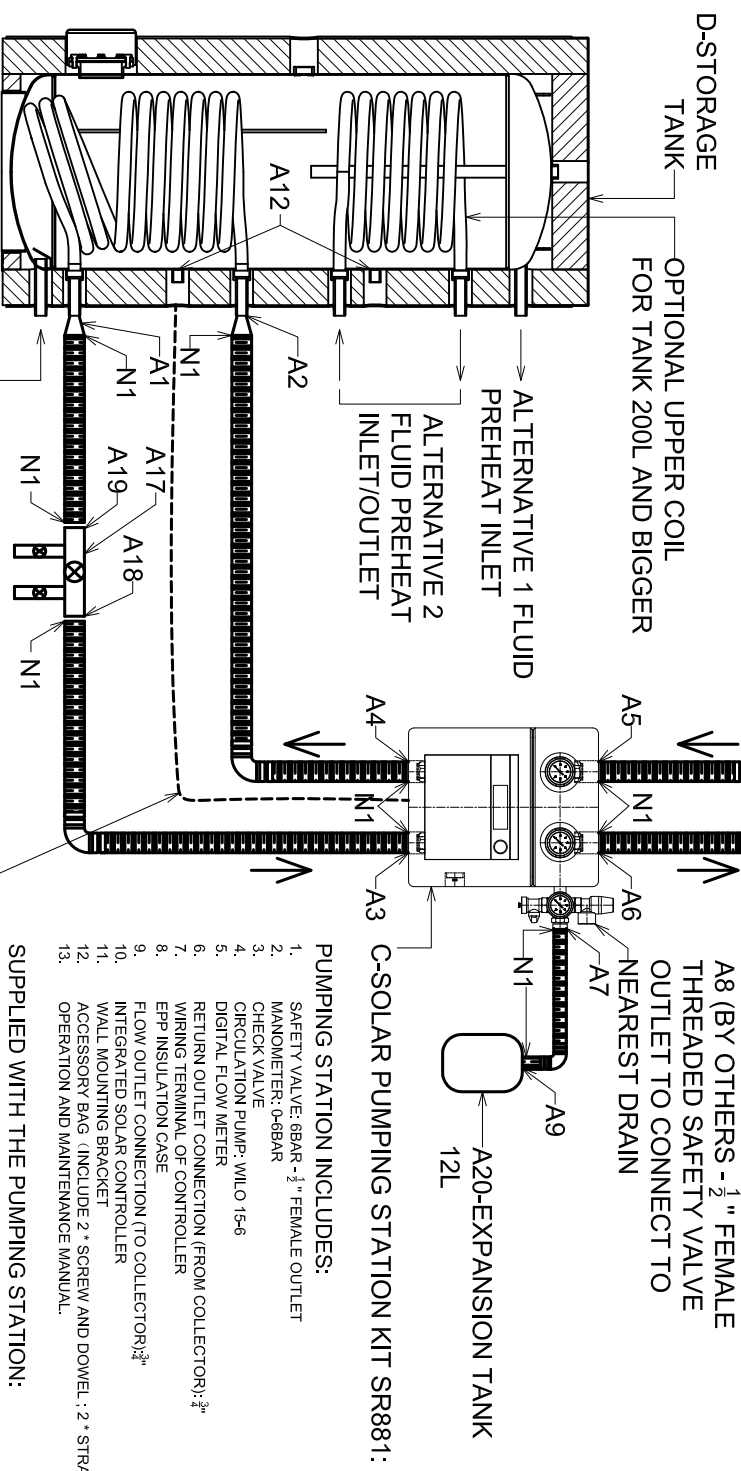
SINGLE COLLECTOR SOLAR FLUID HEATING PREPACKAGED KIT



SOLAR COLLECTOR TEMPERATURE SENSOR CONNECT TO CONTROLLER



Solar Water Heating Kits Identification



A8 (BY OTHERS - 1/2" FEMALE THREADED SAFETY VALVE OUTLET TO CONNECT TO NEAREST DRAIN

A20-EXPANSION TANK 12L

C-SOLAR PUMPING STATION KIT SR881:

- PUMPING STATION INCLUDES:**
1. SAFETY VALVE: 88BAR - 1/2" FEMALE OUTLET
 2. MANOMETER: 0-8BAR
 3. CHECK VALVE
 4. CIRCULATION PUMP: WIL0 15-6
 5. DIGITAL FLOW METER
 6. RETURN OUTLET CONNECTION (FROM COLLECTOR): 1/2"
 7. WIRING TERMINAL OF CONTROLLER
 8. EPP INSULATION CASE
 9. FLOW OUTLET CONNECTION (TO COLLECTOR): 3/4"
 10. INTEGRATED SOLAR CONTROLLER
 11. WALL MOUNTING BRACKET
 12. ACCESSORY BAG (INCLUDE 2 * SCREW AND DOWEL : 2 * STRAIN RELIEF)
 13. OPERATION AND MAINTENANCE MANUAL.

SUPPLIED WITH THE PUMPING STATION:

14. 1 (X) COLLECTOR SENSOR PT1000
15. 2 (X) STORE SENSOR NTC10K

STORAGE TANK TEMPERATURE SENSOR CONNECT TO CONTROLLER

A	Fittings	Quantity
A1	Reducing Nipple 3/4 x 1/2" - GD10002016	1
A2	Reducing Nipple 3/4 x 1/2" - GD10002016	1
A3	Reducing Nipple 3/4 x 1/2" - GD10002016	1
A4	Reducing Nipple 3/4 x 1/2" - GD10002016	1
A5	Reducing Nipple 3/4 x 1/2" - GD10002016	1
A6	Reducing Nipple 3/4 x 1/2" - GD10002016	1
A7	Reducing Nipple 3/4 x 1/2" - GD10002016 + Socket 3/4" GD 100040	1
A8	Reducing Nipple 3/4 x 1/2" - GD10002016 + Socket 3/4" GD 100040	1
A9	Solar Collector Connection 22mm x 1/2" GD100014	2
A10	Brass Threaded Female Tee GD100033F	2
A11	Thermal Well 1/2" - A05	2
A12	Collector Temperature Sensor - PT1000	1
A13	Nipple 1/2" - GD100011	1
A14	Nipple 1/2" - GD100011	1
A15	Nipple 1/2" - GD100011	1
A16	Automatic Air Vent	1
A17	Glycol Filling Valve 3/4"	1
A18	Reducing Nipple 3/4 x 1/2" - GD10002016	1
A19	Reducing Nipple 3/4 x 1/2" - GD10002016 + Socket 3/4" GD 100040	1
N1	Brass Nut, Washer and Cir-clip 1/2"	12
Total Fittings		
B	SRCC Certified Xianke xx Tubes Collector	1
C	Pumping Station SR881 including: ON/OFF Wilo Pump, Controller, Safety Valve, Flow meter, check valve, manometer, Tank Sensor and Collector Sensor	1
D	Tank xxx	1
E	Flexible Corrugated Stainless Steel EPDM Pre Insulated Twin Solar Hose with Seamless Jacketing & Sensor Cable - 1/2" x 20mm - 15m Long	1
A12	Tank Sensors	1
A20	Expansion Tank 12L	1

PROPERTY OF AQUA SOLANOR INC. OWNER OF WWW.HYDROSOLAR.CA

2018 - APRIL - 20

FOR ANY QUESTION: admin@hydrosolar.ca