

CBIT100L1C40 - 100L SOLAR WATER TANK WITH ONE INDIRECT COIL

TECHNICAL SPECIFICATIONS :

Inner Tank Materials: Food Grade Stainless steel SUS304 , 1.2mm (0.05") thickness.

Outer Tank Cover Material: Color steel plate , thickness:0.5mm

Thermal Insulation Layer: 60 mm (2") of High Pressure Automatic Polyurethane Foaming Layer, Density of 36 Kg/m³ (2.24 Lb/ft³).

In Tank Heat Exchangers (Coils) Specifications: SS304 (Stainless Steel), Thickness = 1mm (0.04").

Immersed Coil Outer Diameter : 38mm (1.5") , Coil Inlet/Outlet Connection: 38mm (1.5") Female NPT.

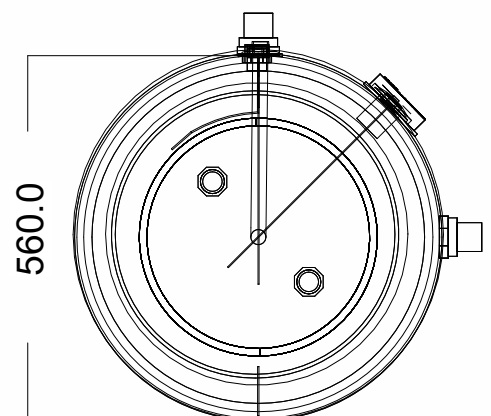
Bottom Coil Heat Exchange Area :2 m²(21.52 ft²).

Water Purification: Magnesium Rod Installed

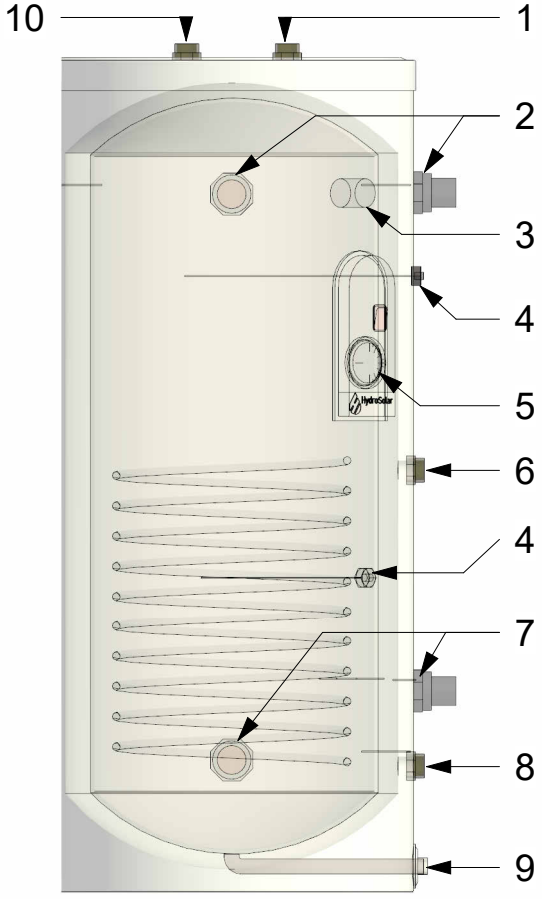
Backup Heat: Standard 1" port for electric backup with mechanical thermostat (Heater not included with the tank).

Accessories: Tank Feet, Screws, Safety T/P Valve and Drain Valve Port Plugged.

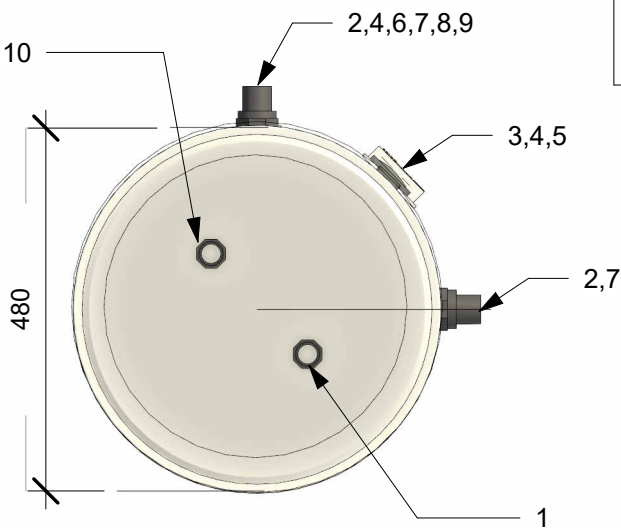
HSE Limited Warranty: 5 Years against manufacturing defects.



CBIT100L1C40 - 100L SOLAR WATER TANK WITH ONE INDIRECT COIL



1	T/P SAFETY VALVE PORT 3/4" FEMALE
2	WATER TANK INLET/OUTLET FEMALE 1.5" NPT
3	MAGNESIUM ROD 3/4" BSPT FEMALE
4	TANK TEMPERATURE SENSOR PORT 1/2", 3/4" BSPT FEMALE
5	ELECTRIC HEATING ELEMENT 1" FEMALE PORT (HEATING ELEMENT NOT INCLUDED)
6	IMMERSED COIL 1.5" FEMALE NPT OUTLET
7	WATER TANK INLET/OUTLET FEMALE 1.5" NPT
8	IMMERSED COIL 1.5" FEMALE NPT INLET
9	DRAINAGE 3/4" NPT FEMALE THREADED PORT WITH MALE 3/4" NPT END CAP
10	AUTOMATIC AIR VENT AT THE TOP OF THE TANK- 1/2" FEMALE THREADED PORT



GROSS WEIGHT: 34 KG (74.95 LB)

CBIT100L1C40 - 100L SOLAR WATER TANK WITH ONE INDIRECT COIL

