

INSTALLATION and OPERATION MANUAL



MHNCCW
Multiaqua™



INSTALLATION & OPERATING MANUAL

MHNCCW Fan Coil 1- 3 Tons

CAUTION

Care must be taken when handling sheet metal. Sheet metal parts have sharp edges and could cause injury.

GENERAL

Read the entire contents of this manual before beginning installation. Multiaqua assumes no responsibility for equipment installed contradictory to any code requirement or installation instructions.

The components of this fan coil have been inspected at the factory and readied for shipment. Upon receiving the shipment a visual inspection of the packaging must be performed.

If any damage to the packaging is discovered, an inspection of the components must be performed and noted on the delivery documents. If component damage is found a damage claim must be filed by the receiving party against the delivery party immediately.

This product is designed and manufactured to permit installation in accordance with national codes. It is the installer's responsibility to install the product in accordance with national codes and/or prevailing local codes and regulations.

Care must be taken to ensure the structural integrity of the supporting members, clearances and provisions for servicing, power supply, coil connections and/or condensate removal. Before the installation ensure the structural strength of the supporting members is sufficient. See **Figure 1** for hanging weights of the fan coils.

This unit is designed to be installed in a horizontal configuration only and into an enclosure assembly. The enclosure assembly is provided by others or field fabricated by the installing contractor.

The coil hand of connection is field reversible. See figures 4-6 for converting the coil hand of connection.

FAN COIL MODEL NUMBER	APPROXIMATED WEIGHTS (LBS)
MHNCCW-04-01	66.0
MHNCCW-06-01	68.2
MHNCCW-08-01	72.6
MHNCCW-10-01	74.8
MHNCCW-12-01	83.6

Figure 1

FAN COIL DIMENSIONS						
Fan Coil Model Number	A	B	C	D	E	F
MHNCCW-04-01	37.72	34.56	31.41	10.00	5.51	21.65
MHNCCW-06-01	37.72	34.56	31.41	10.00	5.51	21.65
MHNCCW-08-01	37.72	34.56	31.41	10.00	5.51	21.65
MHNCCW-10-01	43.70	40.55	37.40	10.00	5.51	21.65
MHNCCW-12-01	49.68	46.53	43.38	10.00	5.51	21.65

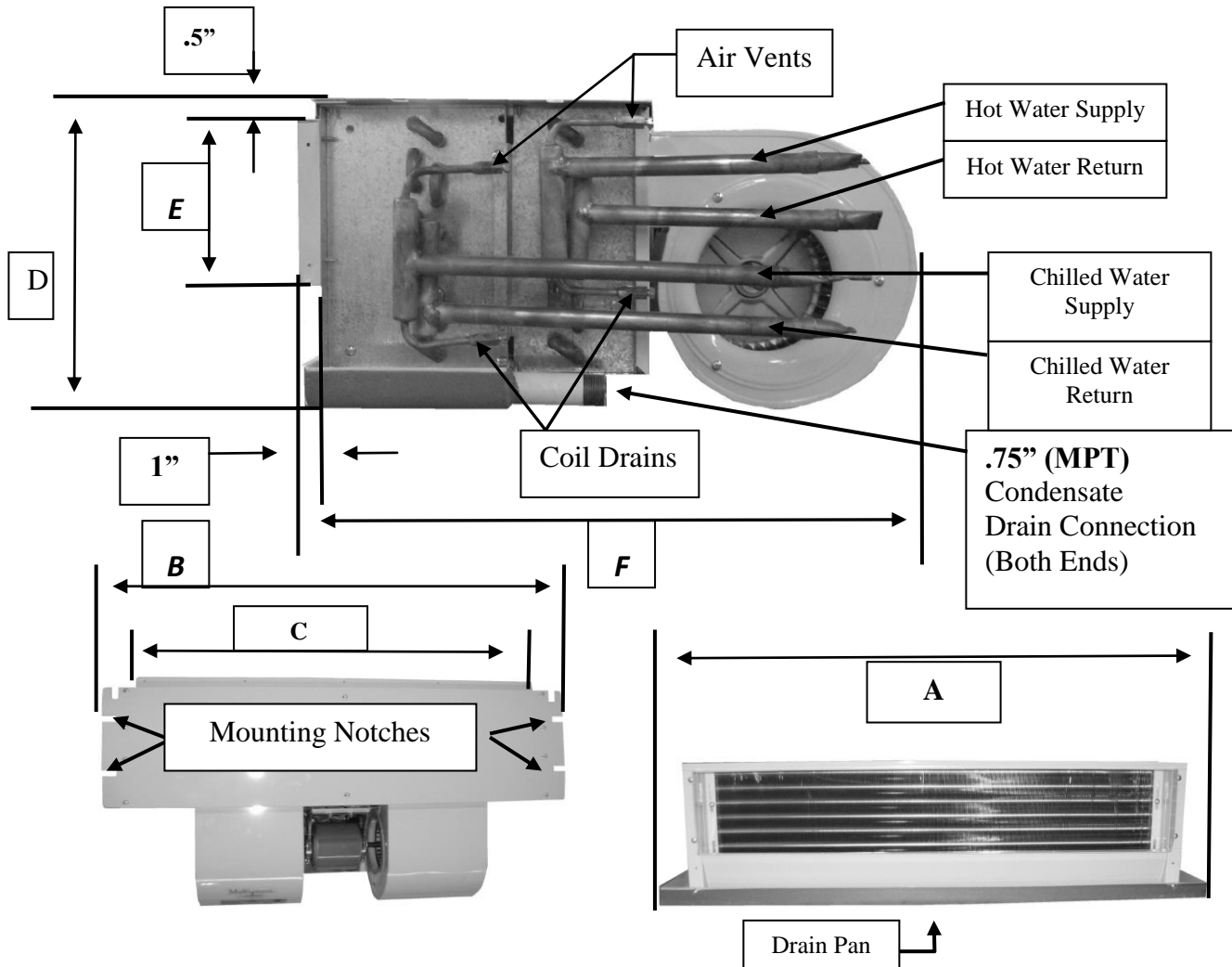


Figure 3

----- CAUTION -----

Care must be taken when handling sheet metal. Sheet metal parts have sharp edges and could cause injury.

INSTRUCTIONS FOR CONVERTING COIL CONNECTION TO LEFT OR RIGHT HAND

1. Remove the eleven screws that attach the top to the fan coil assembly and remove the top.

Figure 4

2. Remove the eight screws that hold the coil into the fan coil frame assembly. There are four screws per side.

Figure 5

3. Slide the coil out of the fan coil frame assembly toward the coil supply and return line connections. Ensure that care is taken when removing and inserting the coil not to damage the coil fins. Insert the coil into the fan coil frame assembly from the other end and reverse procedures 4 & 5 to reassemble the fan coil.

Figure 6

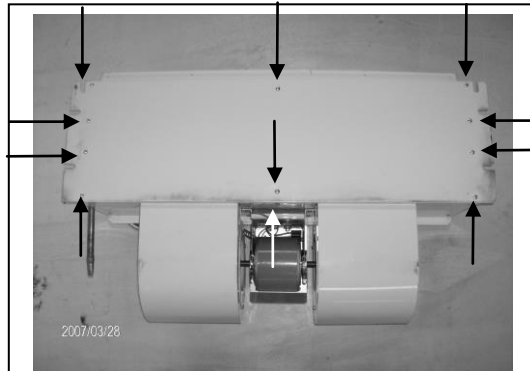


Figure 4

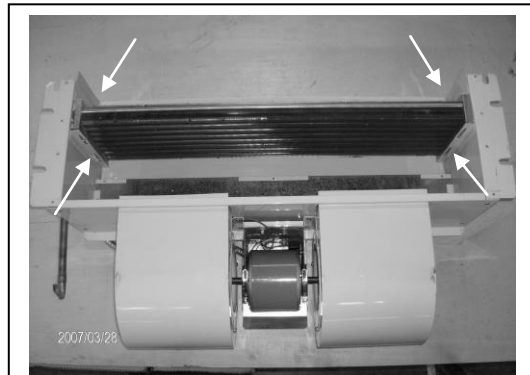


Figure 5



Figure 6

INSTRUCTIONS FOR INSTALLING FAN COIL UNIT INTO ENCLOSURE ASSEMBLY

1. Remove the ten screws that attach the electrical assembly to the fan coil unit. Do not separate the electrical assembly from the blower assembly. These two assemblies will be removed in the next step.

Figure 7

2. Remove the five screws attaching the blower assembly to the coil assembly. Separate the electrical and blower assemblies from the coil assembly.

Figure 8

3. Insert the coil assembly into the enclosure assembly starting with the discharge air opening of the coil first. Ensure that the discharge of the coil is inserted into the discharge of the enclosure completely. Failure to completely insert the coil discharge will result in recirculation of the discharge air.

Figure 9

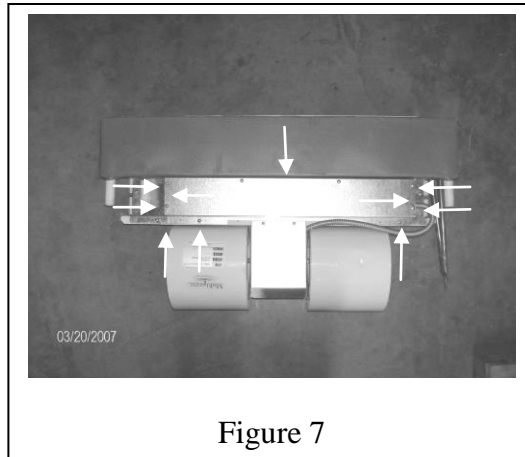


Figure 7

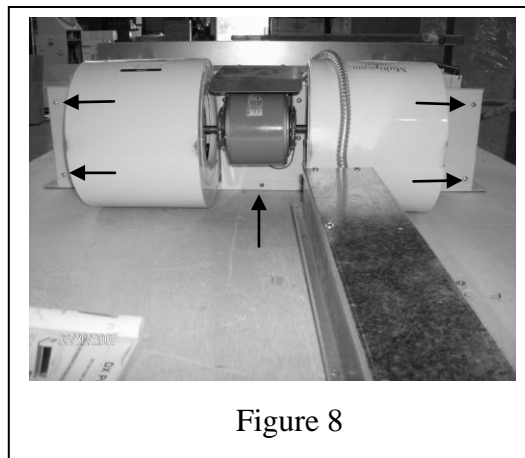


Figure 8

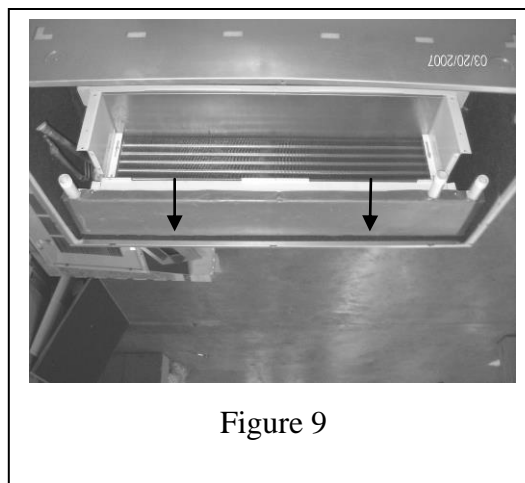


Figure 9

4. Align the fan coil mounting bolts up with the four fan coil mounting notches provided in the coil assembly top. Secure the coil assembly to the enclosure with two mounting bolts per side. Ensure that the coil assembly is level in both directions to allow proper drainage and operation.

Figure 10

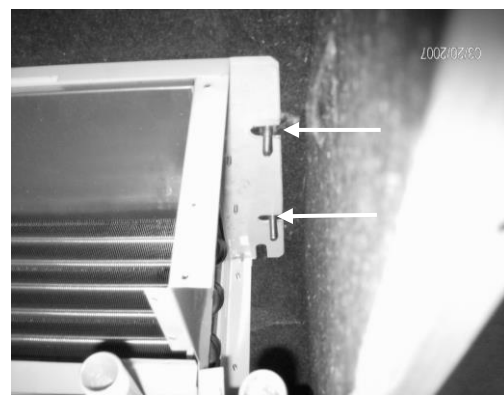


Figure 10

5. Reinstall the blower assembly onto the coil assembly using the five screws previously removed in step 2 **Figure 8**.

Figure 11



Figure 11

6. Reinstall the electrical assembly onto the coil assembly using the ten screws previously removed in step 1 **Figure 7**.

Figure 12



Figure 12

ELECTRICAL & CONDENSATE DRAIN

7. There are four termination points for the electrical wiring. There are two on each side of the electrical box. See unit **Wiring Diagram** for electrical drawings. Wiring must be installed according to prevailing codes and regulations. The fan coil unit has one condensate drain connection on either side of the drain pan for either left or right hand drain connection. The opposite drain connection not being used must be capped off by the installing contractor. The middle drain connection is the safety condensate drain connection. Ensure that all condensate drain lines have at least one quarter of an inch of fall per foot for proper drainage.

Figure 13

WATER COIL CONNECTIONS

8. The fan coil unit comes with a manual air bleed and a manual coil drain fitting. They are located on the same side as the supply and return water line connections. The water supply line is connected to the coil connection furthest away from the fans. The water return line is connected to the coil connection closest to the fans. Ensure that both the supply and return water lines are insulated to prevent them from sweating.

Figure 14

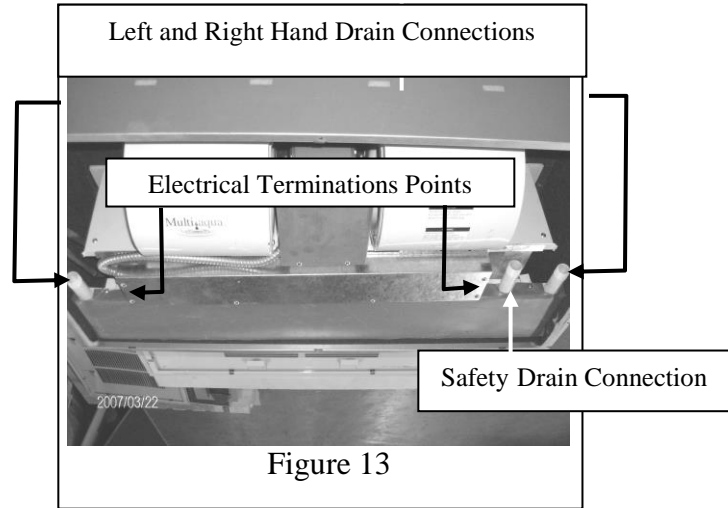


Figure 13

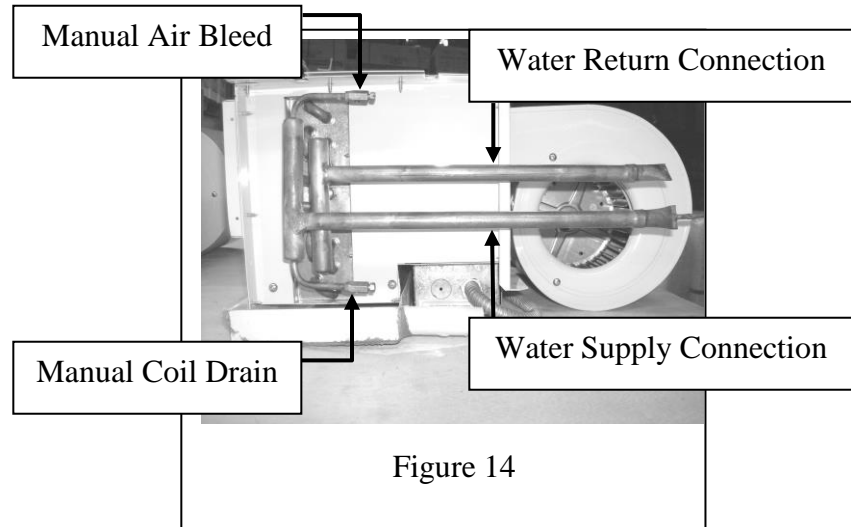


Figure 14

RETURN AND SUPPLY AIR CONNECTIONS

10. When mounting the service access panel, louvered or non-louvered, the installing contractor must provide a frame in order to connect the enclosure assembly to the service access panel. This is required to obtain an airtight seal for the return air. Ensure that the material used for the frame adheres to national codes and / or local codes and regulations. Care must be taken when installing the service access panel to ensure the opening of the hinged service panel.

Figure 15

11. Filters are not supplied with the fan coil unit or the service access panel. The filter(s) must be supplied by the installing contractor. If a louvered service access panel is used the filter will mount on the under side of the hinged access panel. If the optional return air cutout is used, it is recommended that a return air filter grille be used that has the same surface area as the recommended filter sizes.

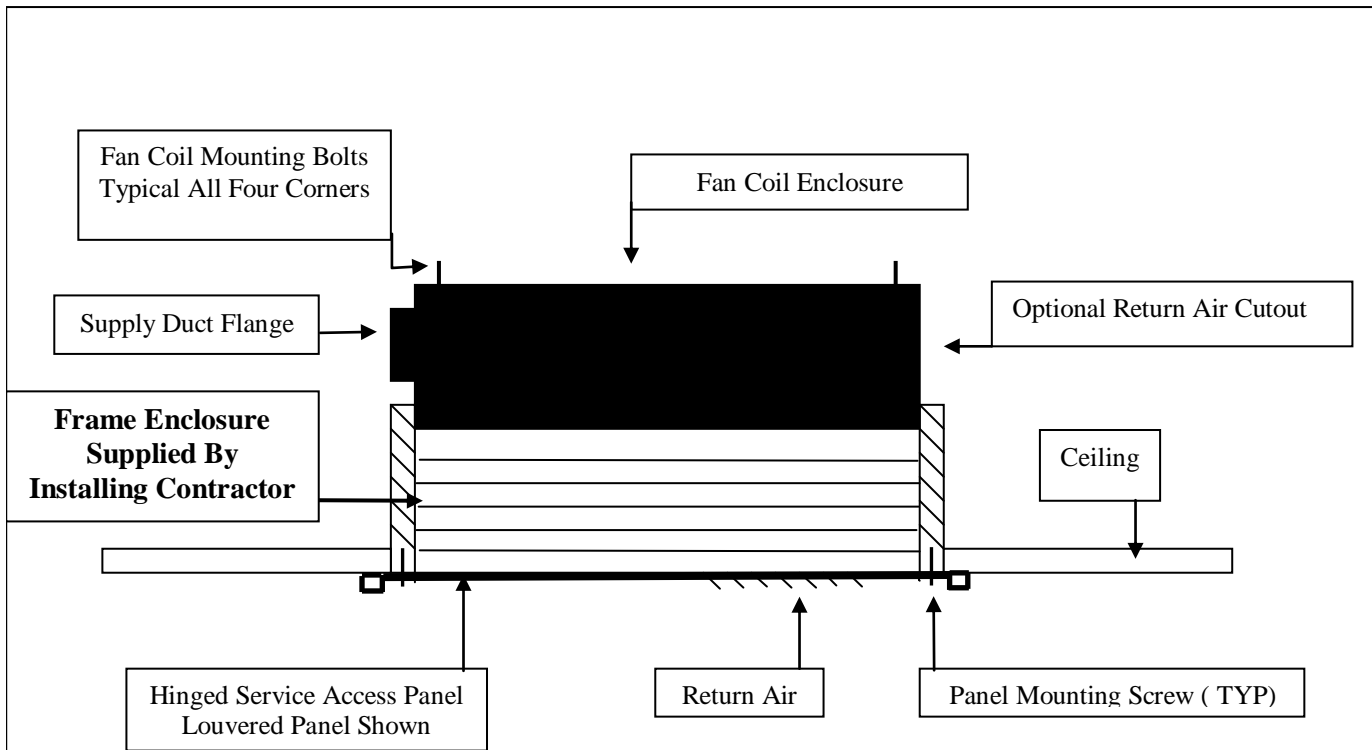


Figure 15