

# How to manually update your FLYWOO NGP9/NGP10.

1. Download the update folder to your computer.

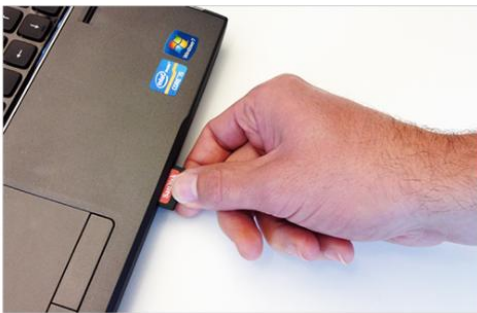
[https://community.gopro.com/s/article/GoPro-Labs?language=en\\_US](https://community.gopro.com/s/article/GoPro-Labs?language=en_US)

## How to Install GoPro Labs Firmware

1. Download the GoPro Labs firmware for:

- [HERO10 Black v1.42.70](#) | June 2022
- [HERO9 Black v1.72.70](#) | June 2022
- [MAX v2.00.71](#) | January 2021
- [HERO8 Black v2.51.75](#) | July 2022
- [HERO7 Black v1.90.71](#) | January 2021
- [HERO5 Session v2.51.72](#) | May 2021

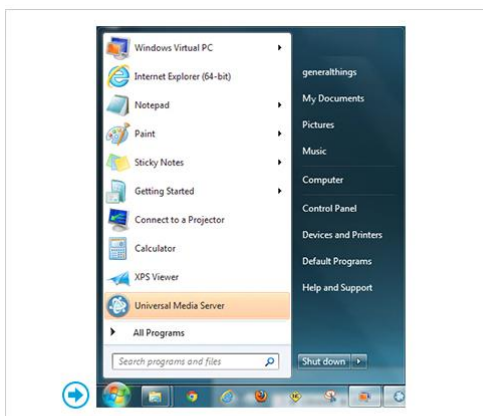
2. Insert your camera's microSD™ card into your computer using a microSD card adapter or USB reader.



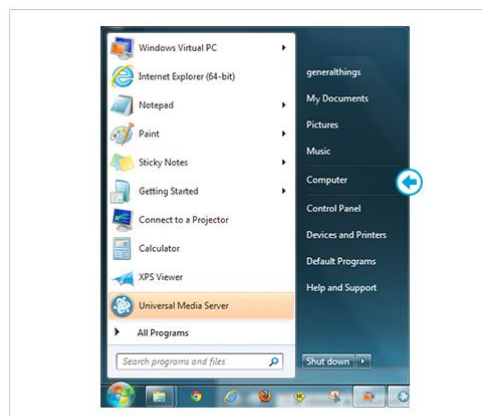
OR



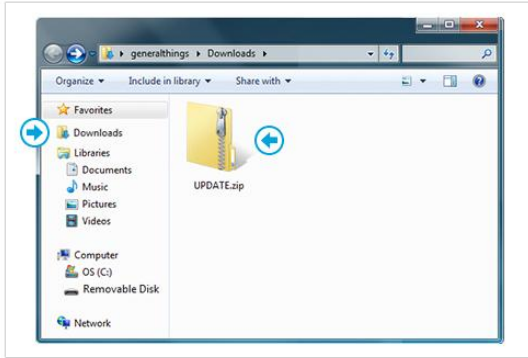
3. Transfer the update file to your microSD card.



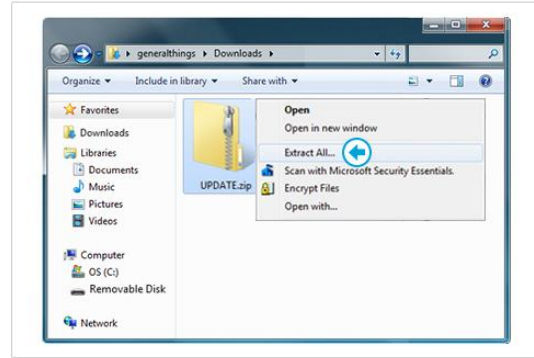
Click on the 'Windows' icon on the lower left corner of your screen.



Click on the 'Computer' link in the right-hand list.

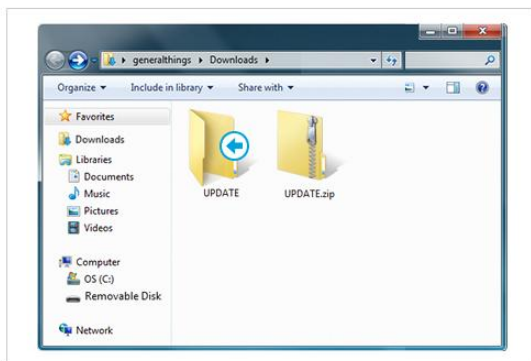


Then click on the 'Downloads' link on the left side to find the Update.zip file.

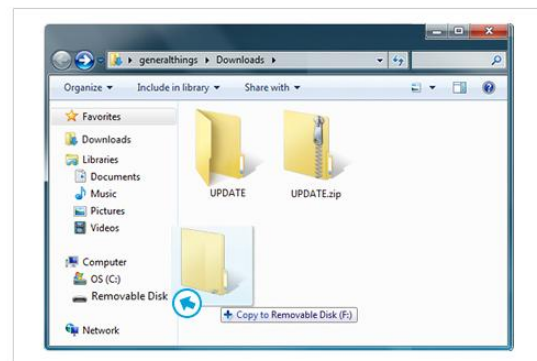


Right-click on the UPDATE.zip file, click "Extract All", and then Save.

Do not change the destination folder.



You will now see the UPDATE folder you just 'extracted' next to the original UPDATE.zip file you downloaded.



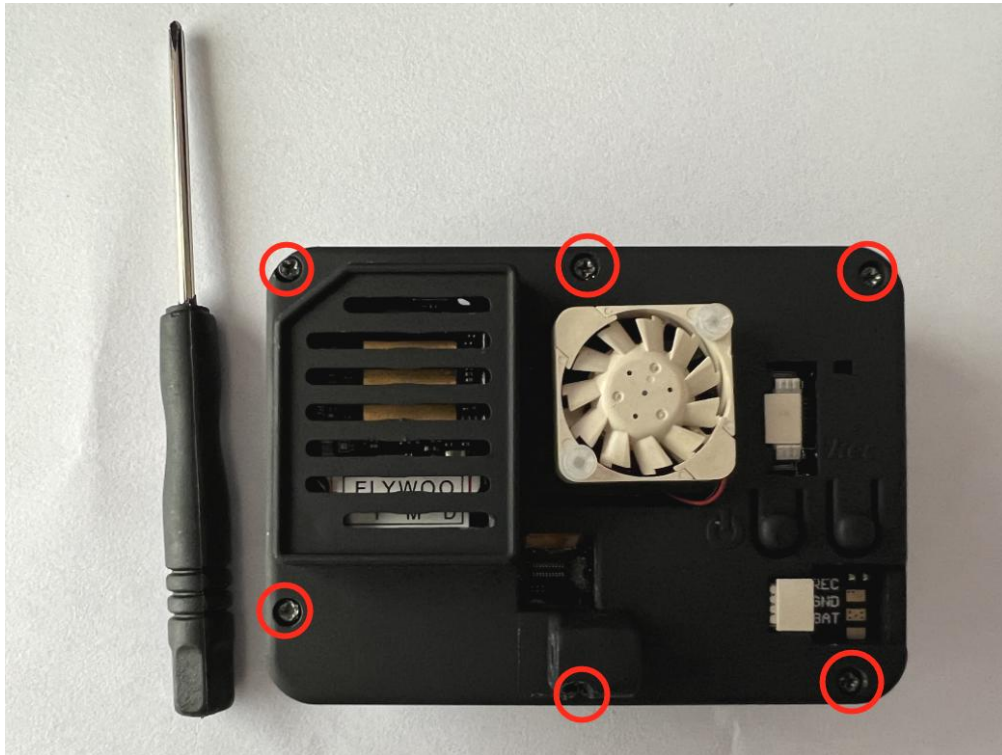
Look under the DEVICES section on the left of the Finder window. You will see your microSD card listed as 'NO NAME'. Drag the UPDATE folder to your microSD card labeled 'NO NAME'.

- Be sure to move the UPDATE folder to the root level of the microSD card only. Do not move the UPDATE.zip file.
- Do not drag an update folder with numbers added to the end such as UPDATE(1), UPDATE(2) if they appear.

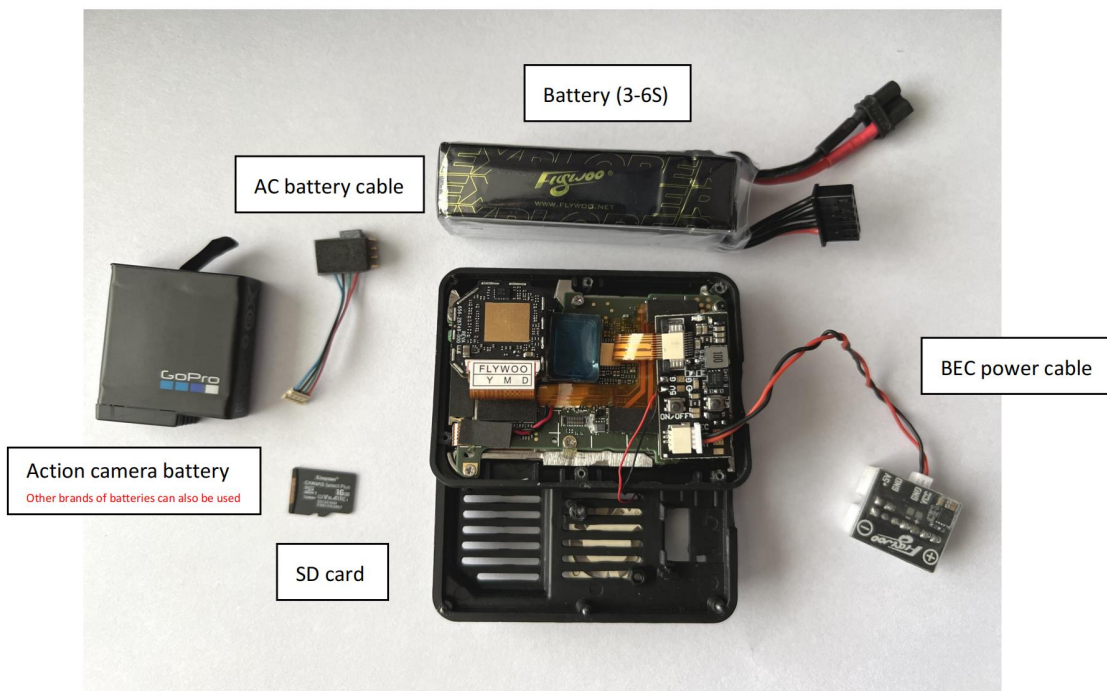


Safely remove the microSD Card from your computer.

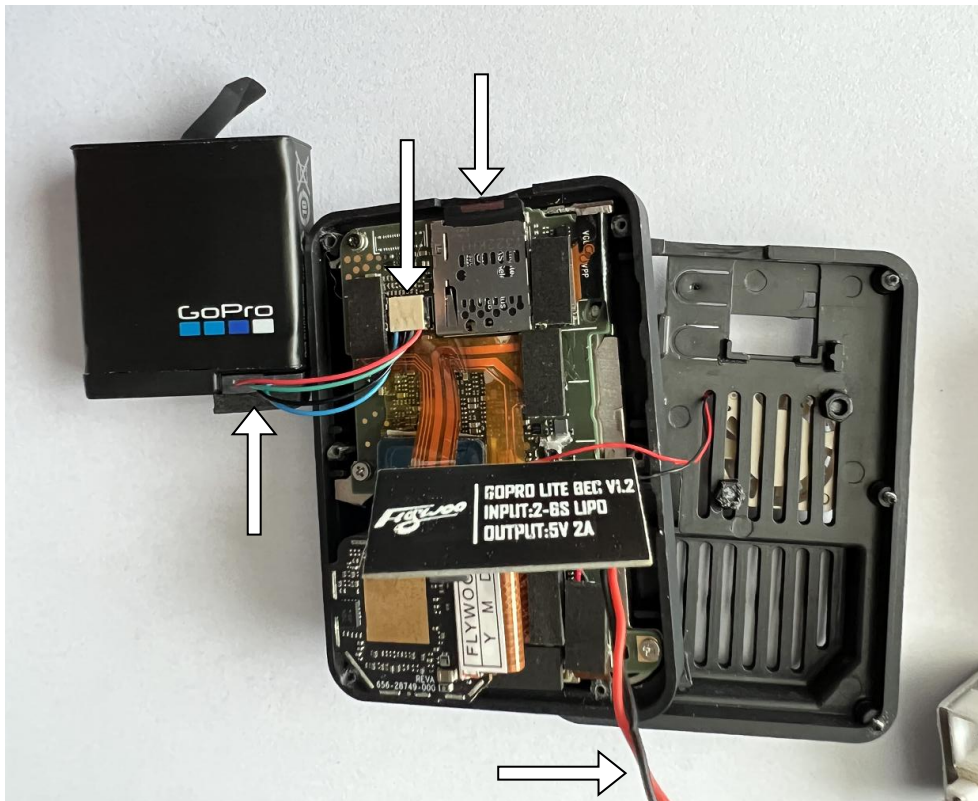
4. Use a screwdriver to remove the six screws.



5. Accessories needed to prepare the firmware update.



6. Insert SD card, connect AC battery and BEC power.



7. The camera automatically enters the updater after startup.



8. The update is complete when "UPDATE COMPLETE" is displayed.

