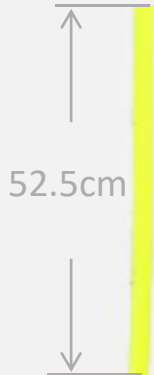


Install The LED Strip For CineRace20

Goods List



52.5cm



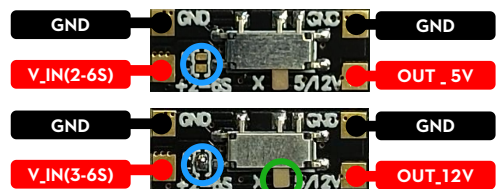
BEC



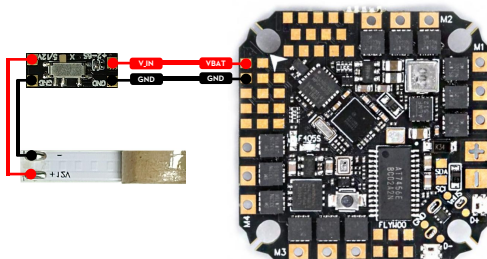
BEC Fixing Part

1

Solder, make the BEC work in 12V mode. (BEC can output with 5V/12V). The default output is 5V when the selection pad is not connected.



O: Turn on
X: Turn off

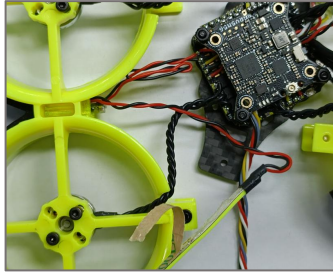
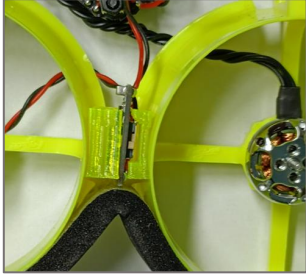
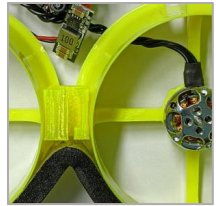
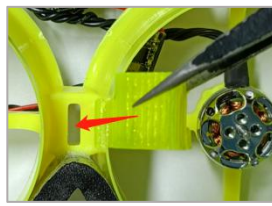


2

Remove the tape behind the LED strip to expose the pad. Solder the LED strip and BEC to the FC

3

Install the BEC fixing part into the reserved hole.

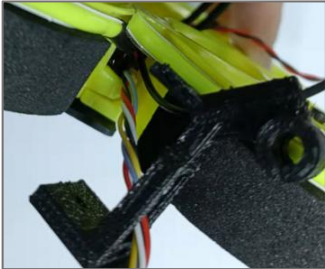


4

Fix the BEC and arrange the cables. Remove the isolation paper after the LED strip

5

Install the frame. Ensure that the line can be smoothly reserved for the holes. Paste the LED light strip on the frame, pass through the back of the camera and make a circle.



6

Finish installing the antenna mount and install other components. Now you can start a new flying journey.



If you need other information
Scan the QR code