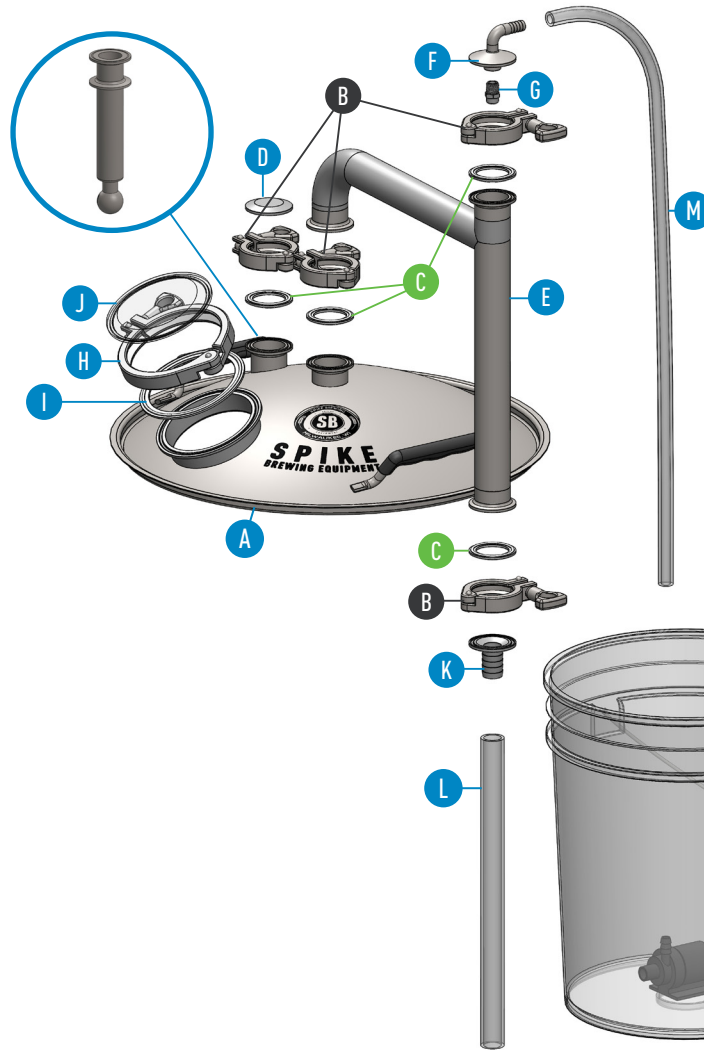


# STEAM CONDENSER



1.5" tri-clamp port can be used for cleaning with a [CIP ball](#). (sold separately)



Water supply bucket to be provided by brewer (not included).

ITEM	DESCRIPTION	QTY
A	Condenser Lid	1
B	1.5" TC Clamp	4
C	1.5" TC Gasket	4
D	1.5" TC Cap	1
E	Condenser Piping	1
F	90° Barb	1
G	Condenser Mister	1
H	4" TC Clamp	1
I	4" TC Gasket	1
J	4" TC Clear Cap	1
K	1.5" TC Barb - 3/4"	1
L	Drain Hose	1
M	Supply Hose	1
N	Water Pump	1

## PRO TIPS:

- Make sure you keep the drain hose above the water line if using a bucket for drainage. If not, back pressure will be created and the system will not work properly.
- Water from drain hose will be very hot. This can be collected and used for cleaning. For this reason do not reuse drain water. The system needs a cool water supply to function properly.