



G40 BREWING SYSTEM

QUICK START GUIDE



THANK YOU FOR CHOOSING THE GRAINFATHER G40

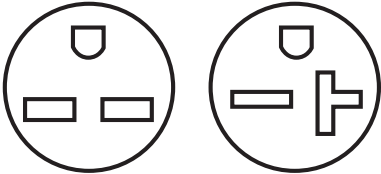
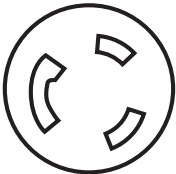
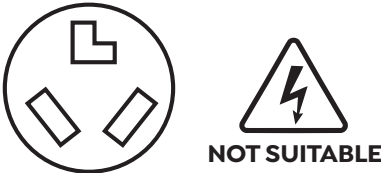
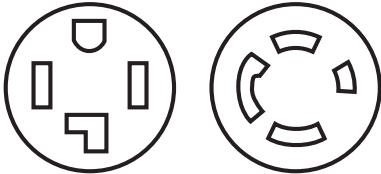
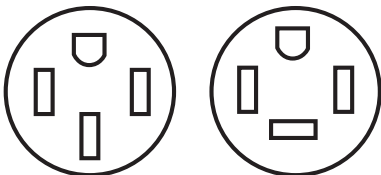
Get your equipment ready by following these quick and easy steps and you'll be brewing in no time.

NOTE: These are shortened instructions for product assembly only. The full online instructions provide more detail about the brewing process using your G40: grainfather.com/instructions

WARNING! (NORTH AMERICA 220 V ONLY)

Please check your unit rating label for the voltage. If your unit is a North American 220 V product, the power cord, control box and boiler body included in the box are designed to be used together with a 220 V supply. Using any of these components with another product may result in hazards and equipment damage.

SOCKET GUIDE (NORTH AMERICA 220 V ONLY)

POWER SUPPLY SOCKET	DESCRIPTION	COMPATIBILITY
 <p>NEMA 6-15R NEMA 6-20R</p>	3-pin workshop and power tools supply.	Brewing system is compatible using power cord supplied in-box.
 <p>NEMA L6-20R</p>	3-pin workshop and power tools supply.	Brewing system is compatible by using an adapter that includes a ground connection and has appropriate electrical certification.
 <p>NEMA 10-30R NOT SUITABLE</p>	3-pin laundry dryer supply, most common installation prior to 1996.	This power supply socket is NOT SUITABLE for use with the brewing system. This socket provides hot-hot-neutral connections. The brewing system requires a ground connection to perform safely in the event of an electrical fault.
 <p>NEMA 14-30R NEMA L14-30R</p>	4-pin modern laundry dryer supply, commonly installed after 1996.	Brewing system is compatible by using an adapter that includes a ground connection and has appropriate electrical certification.
 <p>NEMA 14-50R NEMA 14-60R</p>	4-pin electric oven supply.	Brewing system is compatible by using an adapter that includes a ground connection and has appropriate electrical certification.

SAFETY INFORMATION

1. Read all instructions before using the Grainfather G40.
2. If the supply cord is damaged, it must be replaced by the manufacturer, its service agent, or a qualified person to avoid a hazard.
3. This appliance is intended to be used in household and similar applications such as staff kitchen areas in shops, offices, and other working environments; farmhouses and by clients in hotels, motels and other residential type environments; bed and breakfast type environments; catering and similar non-retailed applications.
4. The appliance is for indoor use only.
5. The appliance is not suitable for installation in an area where a water jet could be used.
6. The appliance must not be cleaned by a water jet.
7. The appliance must be in an upright position at all times when in use.
8. The appliance is only to be installed in locations where it can be overseen by trained personnel.
9. The installation of a residual current device (RCD) having a rated residual operating current not exceeding 30 mA is advisable.
10. The A-weighted sound pressure level of the appliance is below 70 db.
11. Always unplug the unit before cleaning, during storage or in the event of a fault.
12. The boiler, lid and pipes may reach temperatures of up to 100°C (212°F) and therefore must be handled with caution. Never move the unit while it is in operation.
13. Handles on the side of the unit are only meant for transportation once the unit is empty and in a cooled, non-use state.
14. Please note that a two-person or mechanical lift is recommended when using larger grain bills on this system. A single person lift may lead to serious injury.
15. Access of the service area is restricted to persons having knowledge and practical experience of the appliance. The maximum and minimum ambient temperatures for normal use of the appliance is: -20°C (-4°F) to 40°C (104°F).
16. To protect against fire, electric shock, and injury, do not immerse cord/plugs in water or other liquid.

THE FOLLOWING STATEMENT APPLIES TO THE GRAINFATHER G40 PRODUCT SOLD IN EUROPE.

- This appliance can be used by children aged from 8 years and above and persons with reduced physical, sensory or mental capabilities or lack of experience and knowledge if they have been given supervision or instruction concerning use of the appliance in a safe way and understand the hazards involved.
- Children shall not play with the appliance. Cleaning and user maintenance shall not be made by children without supervision.

THE FOLLOWING STATEMENT APPLIES TO THE GRAINFATHER G40 PRODUCT SOLD IN THE UNITED KINGDOM:

- This appliance can be used by children aged from 8 years and above and persons with reduced physical, sensory or mental capabilities or lack of experience and knowledge if they have been given supervision or instruction concerning use of the appliance in a safe way and understand the hazards involved. Children shall not play with the appliance. Cleaning and user maintenance shall not be made by children without supervision.
- Means for disconnection must be incorporated in the fixed wiring in accordance with the wiring rules.
- The fixed wiring insulation must be protected, for example, by insulating sleeving having an appropriate temperature rating.

THE FOLLOWING STATEMENT APPLIES TO THE GRAINFATHER G40 PRODUCT SOLD IN AUSTRALIA AND NEW ZEALAND.

- This appliance is not intended for use by persons (including children) with reduced physical, sensory, or mental capabilities, or lack of experience and knowledge, unless they have been given supervision or instruction concerning use of the appliance by a person responsible for their safety.
- Children should be supervised to ensure that they do not play with the appliance.

NOTE: Not following the safety information above could result in serious injuries and may void your warranty.

ANATOMY DIAGRAM & PARTS LIST

- | | | |
|--------------------------|--|---------------------------------|
| 1. G40 lid | 7. Pump | 12. Recirculation barb and hose |
| 2. Support ring | 8. G40 powerbox | 13. Bottom plate |
| 3. Support ring retainer | 9. G40 base | 14. Grain basket |
| 4. Hop filter | 10. Recirculation pipe, sight glass and fittings | 15. Counter flow wort chiller |
| 5. G40 controller | 11. Lifting bar | 16. Tap adapter kit |
| 6. G40 body | | |



PRE-BREWING ASSEMBLY

Before use, we recommend cleaning your G40 and all of its components using the Grainfather High Performance Cleaner. For further information on cleaning, please refer to the full instructions online: grainfather.com/instructions

1. INSTALLING THE FILTER

Take the hop filter (4) and place it on the inside base of the G40 body. It should be a tight fit and you'll need to apply some pressure to make sure that it is securely in place.



CONNECTING TO POWER & THE CONTROLLER

2. ATTACHING THE G40 CONTROLLER

Take the G40 controller (5) and the 2m power cord from its packaging and place the controller securely on the bracket on the front of the unit. Next remove the small cap from the M12 socket that's located at the front lower section of the G40. Plug the M12 cable into the socket, making sure that the right angle connector is facing upwards. Finally, tighten the securing nut.



3. CONNECTING TO POWER

Take the main power cable and plug it into the base at the back of the G40. Next, plug the other end of the cable into a suitable power socket (15 amp in USA, Canada & EU, 13 amp in UK or 10 amp in AU/NZ). The display screen on the controller should now turn on, however if this does not happen, please check that both the M12 controller cable and connection are securely attached and check the main power cable.

NOTE (NZ/AU ONLY):

The G40 has a default 10 amp mode, but it can also be used in 15 amp mode if you wish to add more power to your system. To enable 15 amp mode, your power socket must be professionally installed by a certified electrician or you will void your warranty. The 15 amp cable is sold separately on the Grainfather store. To change your system to 15 amp mode, please go to "Settings" on your G40 controller and then press and hold the "Heat" button for 10 seconds. This will prompt you with a warning message which will confirm that you would like to switch to 15 amp.



4. ADVANCED WIRELESS CONNECTION AND APP CONTROL

At this point you will be able to use your new G40 and complete a brew using the G40 controller. The G40 is designed with smart features, wireless connectivity, and is compatible with the free Grainfather App, where you can find recipes and run your brew session remotely from your mobile device. For more information on this please read the full instructions online: grainfather.com/instructions

BREWING ON THE G40

NOTE: This section of the quick start guide outlines the key steps during the brewing process. For further information, please refer to the full instructions online: grainfather.com/instructions

1. ADD THE MASH WATER

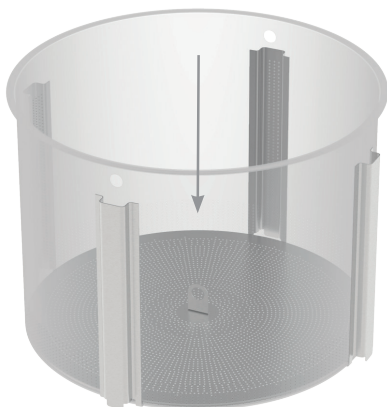
Make sure that your G40 is on a stable, flat surface before you start brewing. We recommend placing your G40 on the floor due to heavy lifting that is required later in the brewing process. Add the volume of mash water required by your recipe – you can use the advanced calculators available on the Grainfather App.

2. SET THE MASH/STRIKE TEMPERATURE

Using the G40 controller, set the required mash temperature and press the 'Heat' button to initiate heating. Place the lid on the G40 to reduce the heating time. At this stage, if your G40 is connected to the Grainfather App, you can run your brew session remotely from your mobile device.

3. ASSEMBLE THE GRAIN BASKET

Insert the bottom plate into the grain basket and make sure that it is sitting flat at the bottom of the basket and that it fits tightly.



4. INSTALL GRAIN BASKET

Slowly insert the assembled grain basket (14) into the G40.



5. ADD GRAINS AND STIR

Once your water reaches the set temperature, slowly add the grain to the grain basket, stirring well to avoid any dry clumps.

NOTE: Unlike existing Grainfather Brewing Systems, the G40 does not require a top plate or an overflow pipe in the basket. The newly designed grain basket with extra drainage holes has removed the need for these parts. You can use a top plate when brewing higher ABV beers where you will be maximising the amount of grain used in the G40. In this case, the top plate can help to keep grain in the basket if the wort levels are too high and stops any wort from draining through the lifting bar holes on the side of the basket. The top plate can be purchased on the Grainfather shop.

6. INSTALL THE RECIRCULATION HOSE

Ensure that the hose is securely attached to the recirculation barb and insert the barb into the G40 body. Rest the other end of the hose on the top of the grain.



7. RECIRCULATE YOUR MASH (WORT)

First, open the ball valve on the top of the recirculation arm on the side of the unit. Then, to begin recirculating, press the 'Pump' button on the controller or via the Grainfather App.

NOTE: To save time, we recommend preparing your sparge water during your mash.

8. LIFTING THE GRAIN BASKET

When the mash has finished, turn off the pump and remove the recirculation hose. Close the ball valve on the recirculation arm and insert the lifting bar into the holes inside the grain basket. Lift the grain basket and then turn it 45° so that the feet at the bottom rest on the basket support ring.



9. SPARGING AND BASKET REMOVAL

Allow the mash liquid to drain into the boiler. Then, gently pour the sparge water evenly over the grain until the water is a few mm above the grain and allow to drain. (Tip: To save time, you can now start to increase the temperature in preparation for the boil). Once the sparge has finished, refit the lifting bar to the grain basket to lift and remove the entire grain basket from the boiler.

NOTE: If you are using a large grain bill, we also recommend gently scooping some of the grain from the basket to reduce the weight.

CAUTION!

A TWO PERSON or mechanical lift is recommended when using larger grain bills on this system. A single person lift may lead to serious injury.



BE VERY CAREFUL not to twist the basket while the basket is in the sparge position which could knock it off the support ring. If the sparge is "stuck" (not draining), then remove the top plate (if applicable), lower the basket and slice the grain bed with a stainless steel paddle or similar. Cut through the stuck grain from the centre towards the outside repeatedly until it loosens. Then return the basket to the sparge position and replace the top plate (if applicable) to continue sparging.

Always ensure the Support Ring fits tightly into its groove and is held in place by the Support Ring Retainer. If you remove the Support Ring for cleaning, ensure that it is correctly reinstalled along with the Support Ring Retainer.



10. BOIL YOUR WORT

After removing the grain basket, complete the boil without the lid and add the hop additions required by your recipe.

CAUTION!

During the boil, do not fit the glass lid as you may cause a boil over.

11. COOLING WITH THE COUNTER FLOW WORT CHILLER

The G40 includes a counter flow wort chiller (15) designed to efficiently cool your wort, and allow easy, and sanitary transfer directly into a fermenter. At the end of the boil, circulate hot wort through the counter flow wort chiller for 2 minutes to sanitise it. Then, turn on your cooling water and transfer your wort through the counter flow wort chiller into your cleaned and sanitised fermenter. For detailed instructions on how to use this equipment, please read the full instructions online: grainfather.com/instructions



ADVICE FOR CLEANING AND STORAGE

- Always disconnect the G40 before cleaning.
- After use, the G40 and all of its components should be cleaned immediately and dried thoroughly.
- We recommend using the Grainfather High Performance Cleaner as it removes the need for tedious scrubbing.
- All stainless-steel components can be cleaned using a conventional, unscented detergent. Abrasive agents and sponges/brushes could cause scratching and are not suitable for use. Ideally, use a dish brush to clean the base of the unit.
- Do not store in a damp area as this could cause damage to the product.
- Once you have cleaned your equipment, dry, reassemble and store.
- For further cleaning advice, please refer to the instructions online: grainfather.com/instructions

IMPORTANT SAFEGUARDS:

READ AND FOLLOW ALL INSTRUCTIONS

- CAUTION** - Risk of fires and electric shock.
- Replace only with genuine Grainfather cord set, part No. SJTO.
 - Do not immerse in water.

SAVE ALL WARNINGS AND INSTRUCTIONS FOR FUTURE REFERENCE

FOR COMMERCIAL AND INDOOR USE ONLY



WARNING
AVERTISSEMENT

RISK OF ELECTRIC SHOCK . DO NOT OPEN.
RISQUE DE CHOC ELECTRIQUE. NE PAS OUVRIR



RESOURCES: Check out our YouTube Channel for helpful videos. For more information, visit our Grainfather Help Centre: help.grainfather.com

GET IN TOUCH:

Online: help.grainfather.com/hc/en-us/requests/new

NZ +64 6 888 3027

AU +61 2 8074 3798

US +1 (562) 354-4603

UK/EU +44 1750 432048



Download the FREE
Grainfather App