

Television Stand Set Up Instructions

Please Note: Each TV will take different screws to attach the monitor to the stand. Due to the many options for TVs these have not been included and will need to be looked up and purchased from a hardware store.

Tools Needed: Philips head Screwdriver

Attach Poles to Base



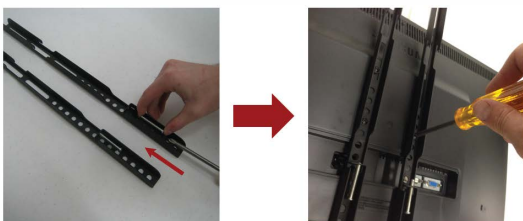
1. Slide the Poles into the base. This works best if you tip the base on its side.
2. Use the 2 large screws to attach the poles into the base. Keep in mind the screw holes in the poles need to be facing forward on each pole
3. Tip the stand back upright.

Attach Mount Plate to Poles



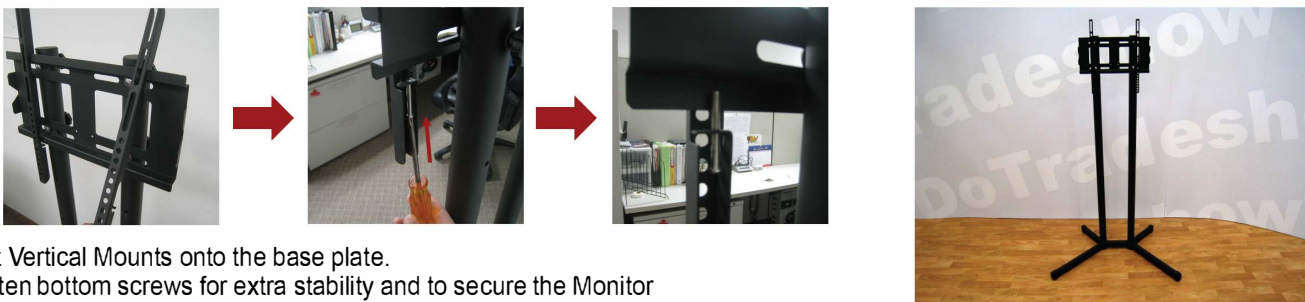
1. Insert the 4 screws into the Mount Plate and through the Poles. Include a washer on each side of the screw.
2. Add the hand tightening nut and tighten the Mount Plate onto the poles.

Attach Vertical Mounts to Monitor



1. Insert the 2 screws that are left into the vertical mounts (these are for securing the Monitor so it cannot move when completed).
2. Using the correct screws for your monitor (not provided) screw the vertical mounts to the back of your monitor
- Make sure the screws used to secure the vertical mounts are on the bottom.

Attach Monitor to Mount Base - Shown without Monitor for Instructional Purpose



1. Rest Vertical Mounts onto the base plate.
2. Tighten bottom screws for extra stability and to secure the Monitor

Questions? Please Contact:
DoTradeshow® Displays

Headquarters
22027 Industrial Blvd
Suite 3
Rogers, MN 55374

DoTradeshow Burnsville
2401 Hwy 13 W Burnsville, MN
55337
"Pick Up and Drop Off ONLY"