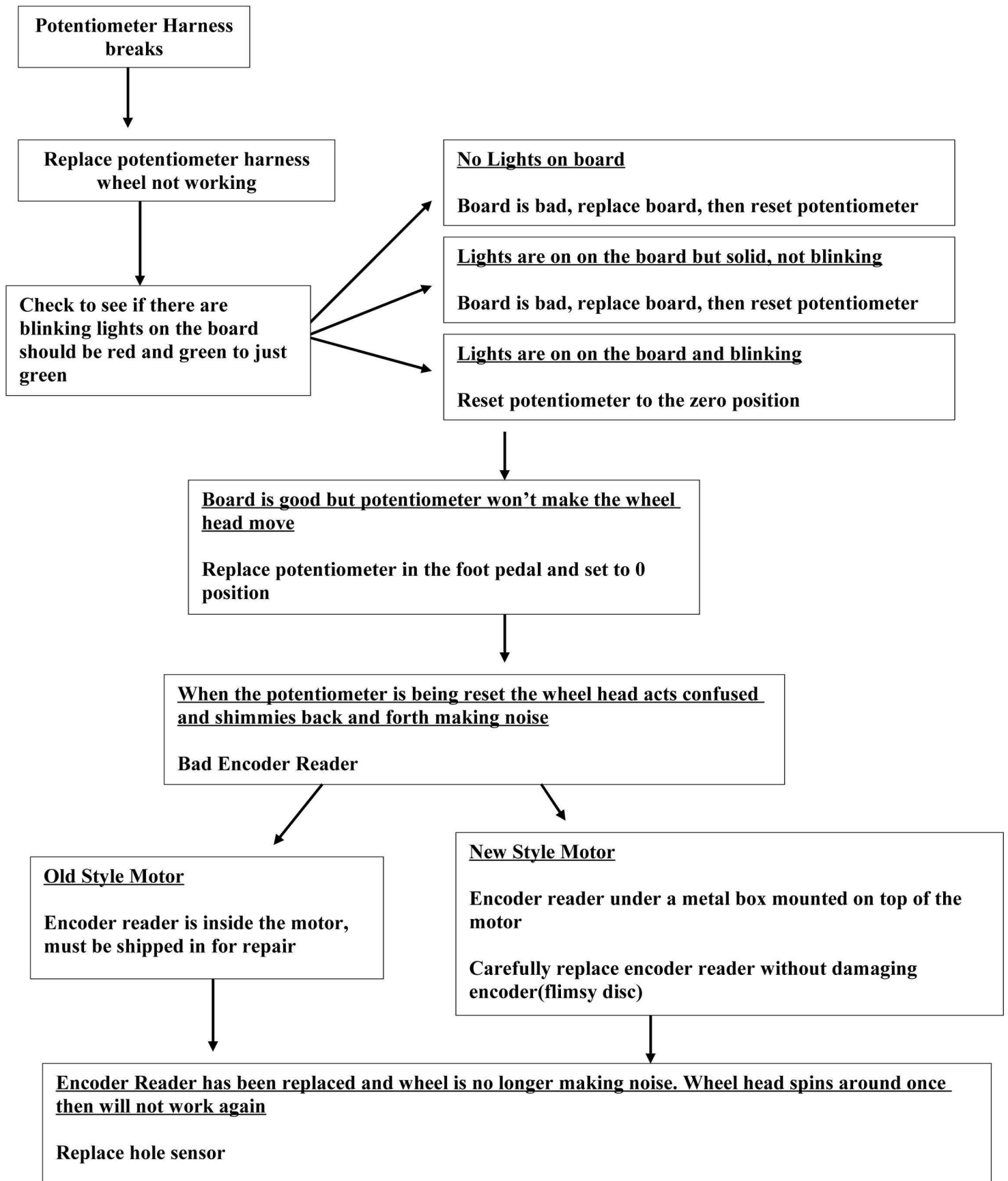


RK Whisper Repair Flow Chart

Created 12/10

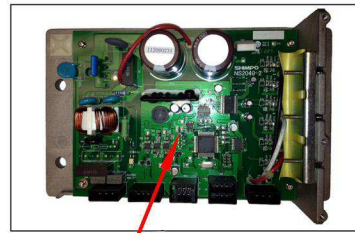
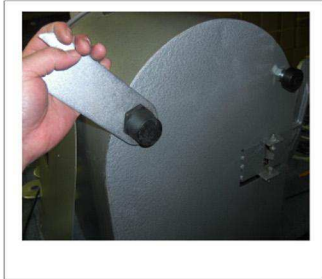


Troubleshooting your Whisper wheel

Before starting, look over your wheel. Are there any broken or damaged parts? If so, please contact Shimpo for replacement parts.

If the wheel does not turn

1) Remove the 4 feet off the bottom of the wheel, then remove the metal cover.



LED 1 LED 2

2) Turn the wheel off and then on again while watching the control board. If the controller is in good condition, you should see lights (red and green, then green blinking). If there are no lights on the control board, you have a bad board. Please notify Shimpo your need to order a new board and have your wheel's serial number ready.

Replace the control board by following the "How to replace the Whisper Controller" instructions.

If the lights are now on at the control board and the wheel still doesn't turn follow the next set of instructions

If lights come on at the control board

- 1) Follow the foot pedal adjustment instructions.
- 2) If while you are trying to adjust the foot pedal, the wheel head does not turn, the potentiometer is bad. Please notify Shimpo to order this part and have your serial number ready.

Replace the potentiometer and then follow the foot pedal adjustment instructions again.

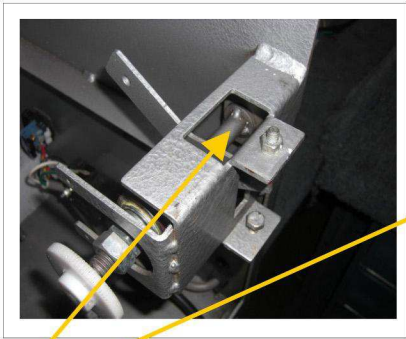
How to Adjust the RK-Whisper Pedal Tension



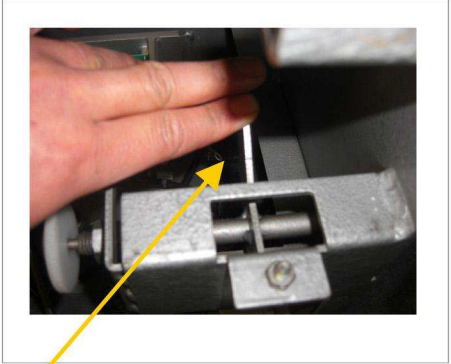
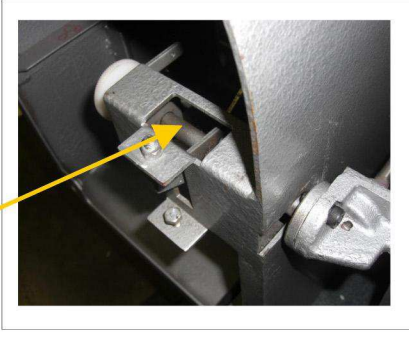
Tools Required:
WD-40
RK-Whisper tool
M-19 Wrench



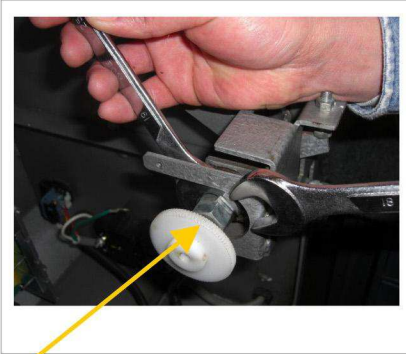
1. Remove the four feet off bottom of the wheel using the RK-Wrench (spanner). Then remove the metal cover plate.



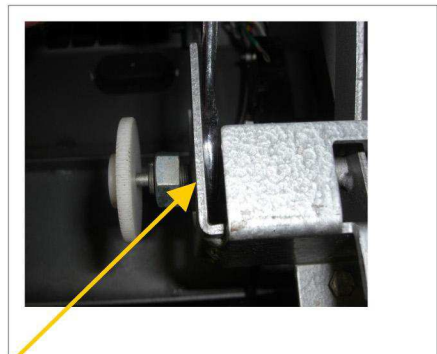
2. Use WD-40 to spray the two spots where metal touches metal.



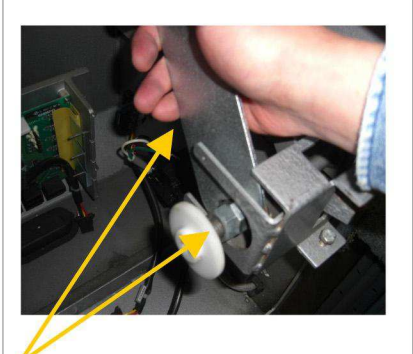
3. Move the pedal or lever back and forth to ensure parts are fully lubricated with the WD-40.



4. Loosen the first bolt (double nut)



5. Loosen the second bolt to adjust the lever to make heavier or lighter tension.



6. Once you have set the tension, place the wrench to secure the bolt to the right and hold it there while tighten the bolt to the left in an upward motion.

Resetting the Potentiometer

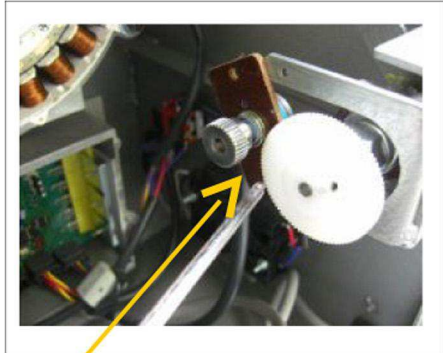


REQUIRED TOOLS

- 1.RK-Wrench
- 2.Phillips screw driver



1. Remove the four feet off the bottom of the wheel using the RK-Wrench, (spanner). Then remove the metal cover plate.



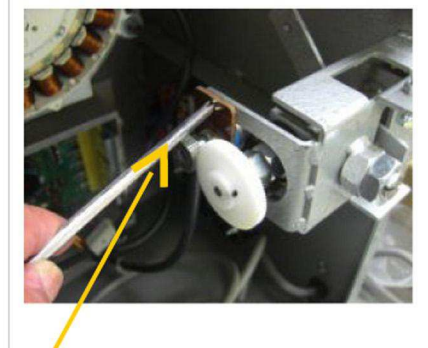
2. Unscrew the top set screw then loosen the bottom screw. Separate the potentiometer (silver gear) from the white plastic gear.



3. Make sure the foot pedal is in the STOP position, then turn the power on.



4. Turn the potentiometer until the wheel head starts to turn. Then turn it in the opposite direction until the wheel head stops.



5. Screw the potentiometer back in place.

How To Replace The Whisper Controller



REQUIRED TOOLS

1. Wire cutter (to cut zip tie)
2. Zip tie
3. Phillips screw driver
4. Allen wrench
5. Spanner wrench

Make sure your wheel is Unplugged before you start any repairs!



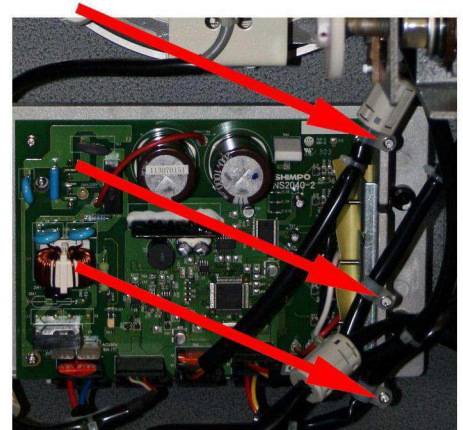
Part #: ARKA3400130
Whisper Controller



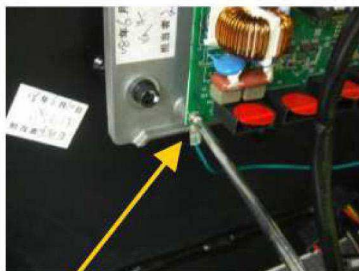
1. Remove the four feet off bottom of the wheel using the RK-Wrench (spanner). Then remove the metal cover plate.



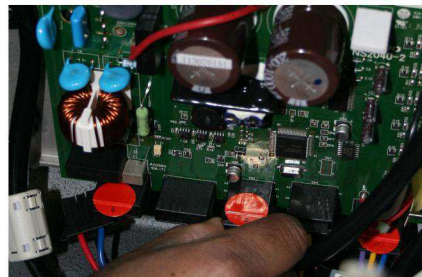
2. Cut the zip tie to release cables that are zip tied together.



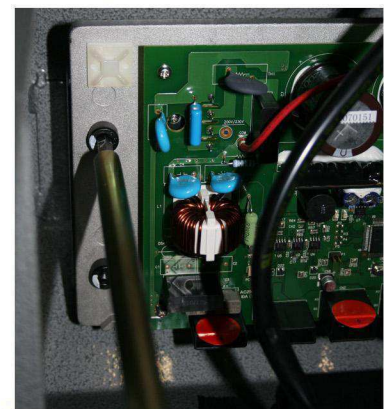
3. Unscrew the 3 cable holders.



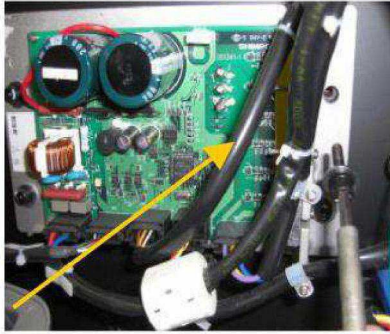
4. Unscrew the green ground wire.



5. Un-clip all 5 cables from the control board by squeezing the sides of the clip and pulling.



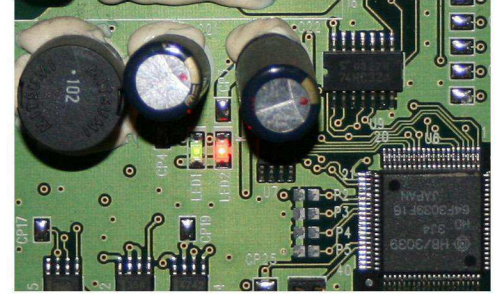
6. Unscrew the 4 mounting bolts as well as the green ground wire to take off the controller.



7. Install the new controller by mounting back onto the wheel. Remember to clip on all the wire harnesses and re-attach the ground wire.

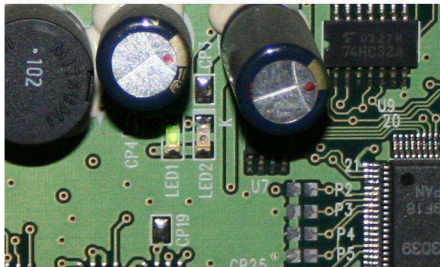


8. Plug the wheel back in and turn the power ON.

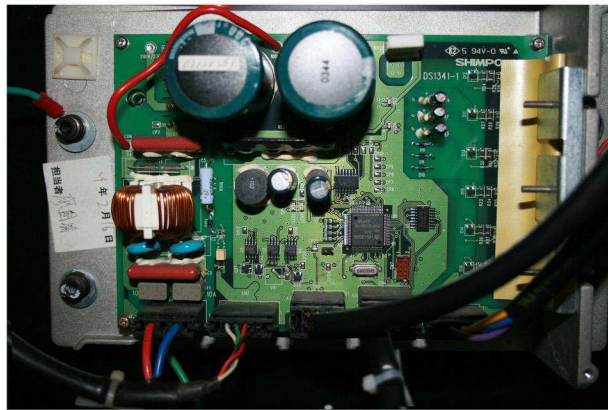


9. The controller should flash both lights at start up.

LED1 = Green LED2 = Red



10. Very shortly after, the LED2 **Red** will turn off and only LED1 **Green** will be flashing.



11. Make sure that all the parts are back in place. all wire harnesses are securely clipped in, the ground wire is fastened and the new controller is firmly screwed on. Finally, replace the metal cover.

MOTOR FOR VL & RK WHISPER

NEW STYLE MOTOR

OLD STYLE MOTOR

