

Variable speed potter's wheel

RINGCONE-POPET

INSTRUCTION MANUAL – RK-2 Type



We are very glad you have chosen to buy a Ringcone Potter's Wheel. This wheel is a new product of Japan, a potter's country through long tradition. A highly perfect non-stop variable speed wheel born of our unique technical skill and experience.

This wheel is in wide use not only by professional potters and amateurs in Japan, but by enthusiastic potters everywhere. Read instruction manual carefully to get the peak performance and long-use of the Ringcone wheel.

A *Nidec* Group Company

SHIMPO –All for dreams

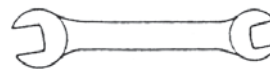
NIDEC-SHIMPO AMERICA CORPORATION • Itasca, IL 60143 USA • Phone: (800) 237-7079 • (630) 924-7138 • Fax: (630) 924-0340
www.shimpoceramics.com • info@shimpoceramics.com

Before Installation

Have the following ready to use

Spanner

One wrench
(for the bolts)



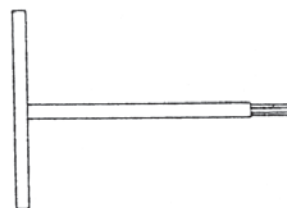
Ring

Two spare rings



***Only with the drip pan
T Spanner**

One T wrench
(for the drip pan)

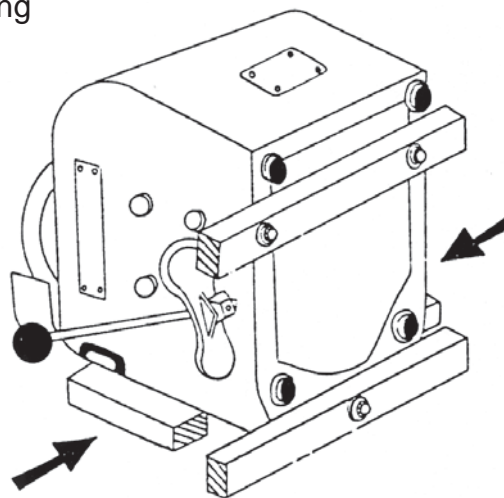
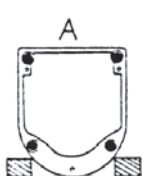


Procedure

1. Set the wheel body as shown in the future, supporting it on each side with block of wood.

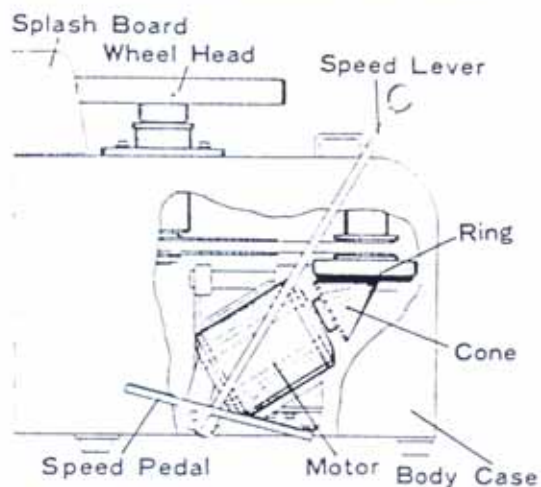
***CAUTION**

Be sure to set it as shown in figure A. If set as in figure B, the opposite way, the motor may suddenly drop out.



Specifications

Name of Structural and Main Parts



- ◊ Speed: 50c/s 0-200 r.p.m.
60c/s 0-240 r.p.m.
- ◊ Direction: Reversible
- ◊ Material of Wheel Head: Light alloy casting
- ◊ Motor: 200W (1/4HP); 110V (single phase)
220 (three phase)
- ◊ External Dimensions: Length - 520m/m (20-1/2")
Width - 532m/m (21")
Height - 443m/m (17-1/2")
- ◊ Diameter of Wheel Head: 300m/m (12")
- ◊ Weight: 48kg (106 lbs)
- ◊ Dr.p pan: 420m/m (16-1/2") in diameter - optional, specify when ordering

*Drip pan can be attached instead of a splash board.

Repairs

1. **If wheel does not move** - The cause is probably a disconnection either in the switch or the cord. Have it checked by an electrician.
2. **If wheel speed will not increase** - If the wheel has lost power "slipping". Since the wheel has been shipped only after strict testing this should not occur except possibly after long use. In such a case see section "Pressure Adjustment".
3. **If wheel makes a rumbling noise**
 - a) It may result from stopping the wheel-head without returning the pedal to "Stop". If so, run normally for 5 minutes or so to work out the noise.
 - b) It may be because of imperfections in the ring. If so, replace the ring.
4. **If V-belt is damaged** - Replace it with a 42" V-belt.

Getting the best Performance

1. Setting Up – Set it on a level surface so it sits perfectly flat.
2. Prior to Using – Make sure that the pedal (or lever) and side switch are on “Stop”.
3. Starting – Plug in cord carefully. Sit down, turn on the side switch, and push the pedal (or lever) toward “High”.

***Caution**

If the power is a 3-wire cord, one wire for ground, be sure to have an appropriate socket. If it is an ordinary 2-wire cord, connect the wheel body to the ground from EEP (ground terminal)

4. Speed – Pushing the pedal (or lever) toward “High” will accelerate the wheel’s rotation, and toward “Stop” will slow it down. Change of speed is always stepless.
5. Direction of Rotation – With the switch on the side the wheel’s direction can be set at either clockwise or counterclockwise rotation. However, be sure to let the wheel **STOP COMPLETELY** before moving the switch.

*** Caution**

If the switch is turned before the wheel stops completely the change in direction will not be accomplished.

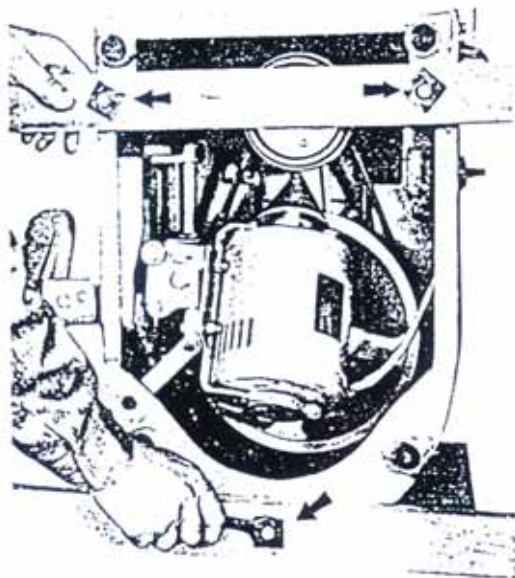
6. Stopping – Return the pedal (or lever) to “Stop”.
7. When Finished – Always return the pedal (or lever) to “Stop” before turning off the side power switch.

*** Caution**

Turning off the switch before the wheel stops moving will cause pockmarks in the rubber ring, which will in turn cause noise in subsequent use.

Getting the best Performance

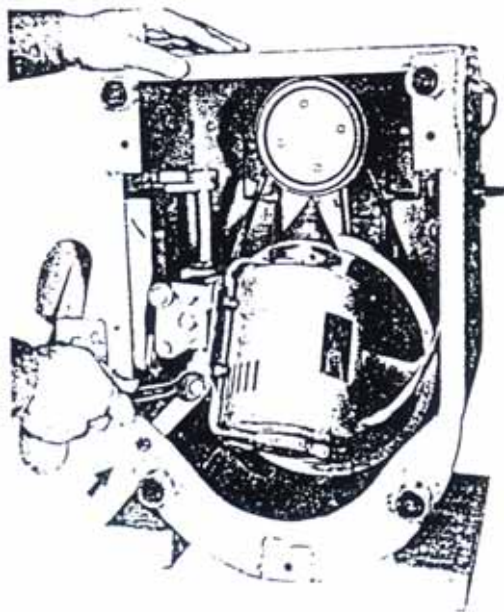
2. Take out the 3 bolts (arrows) holding on the support frames.



3. Next take out the 2 red bolts (arrow) and motor support plates which keep the motor firmly in place during shipping.

***CAUTION**

Be sure to the red bolts and plates. They will be necessary whenever you need to ship the wheel.



To Replace Ring

*UNPLUG the Cord

Take off and replace, using a phillips head screwdriver for the 4 screws in the ring plate.

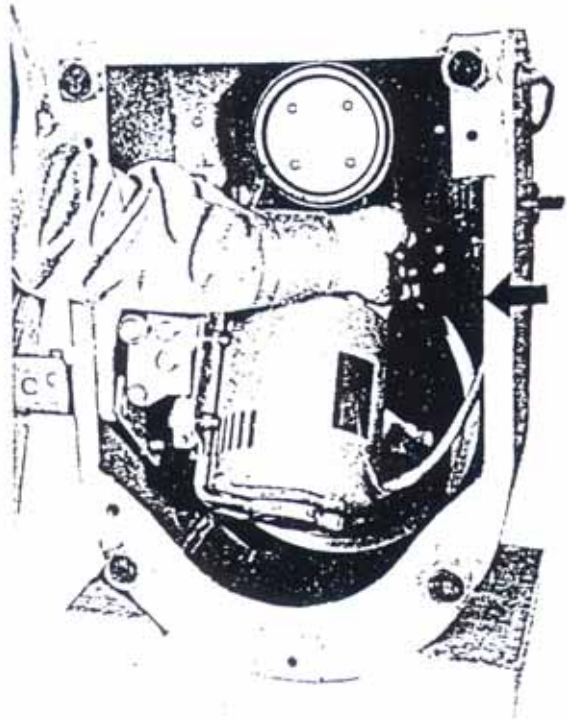


V-belt

*Set the wheel body as shown in the photo

The V-belt will come off easily if you first pull it down by hand from the larger pulley and then lift it off the smaller one. When replacing, first hang it in place over the smaller one and then pull around the large pulley.

*CAUTION Don't let any oil get on the V-belt



Pressure Adjustment

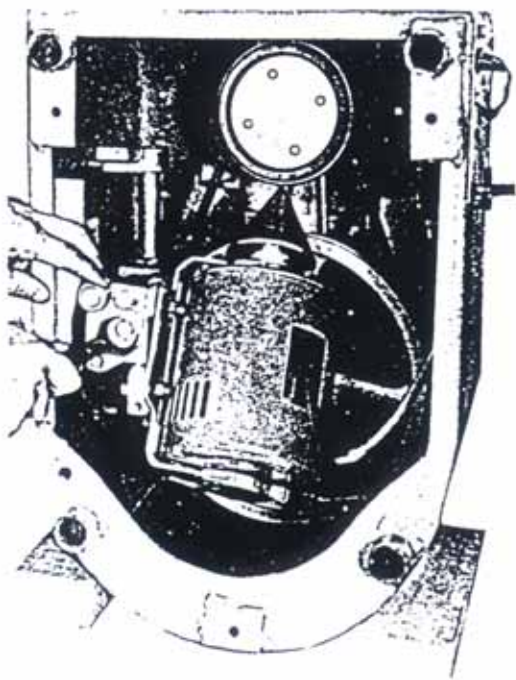
1. Loosen the 3 "Adjuster" bolts.
2. Have the adjuster slightly toward the pedal.

***Caution**

Moving it as far toward the pedal as it will go, will produce such great pressure that the pedal can not move.

3. After adjusting, tighten up the 3 bolts.

Support wheel on each side with blocks of wood (see picture)



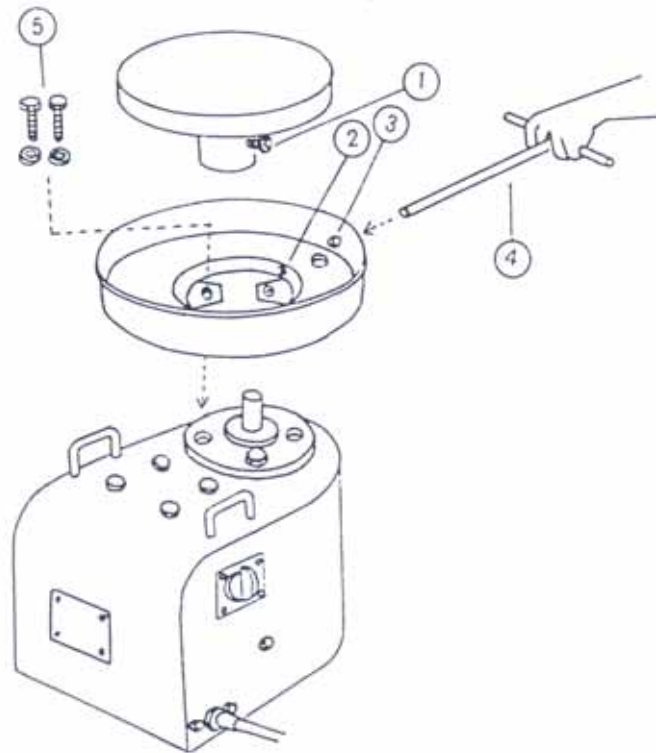
If a drip-pan is included:

Remove the drip-pan

1. Unplug the cord.
2. Put a T wrench through the holes (2) and (3) in the drip pan, loosen the socket bolt (1) of the wheel-head and lift off the head.
3. Take out the 2 hexagonal bolts (5) and lift off the drip-pan.

***Caution**

When attaching, invert the avovementioned order.



A *Nidec* Group Company

SHIMPO All for dreams

NIDEC-SHIMPO AMERICA CORPORATION • Itasca, IL 60143 USA • Phone: (800) 237-7079 • (630) 924-7138 • Fax: (630) 924-0340
www.shimpoceramics.com • info@shimpoceramics.com