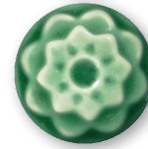


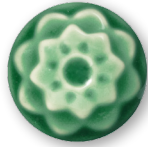
LAYERING
Potter's Choice

Celadon

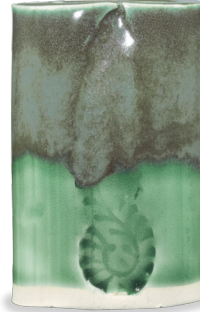
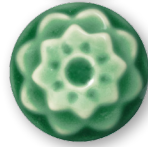
Cone 5/6



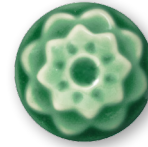
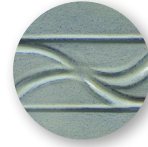
PC-21 Arctic Blue over C-47 Jade



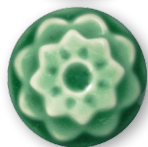
PC-23 Indigo Float over C-47 Jade



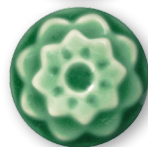
PC-27 Tourmaline over C-47 Jade



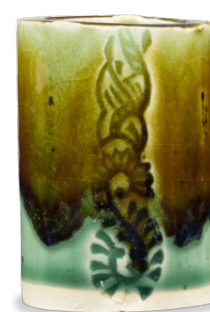
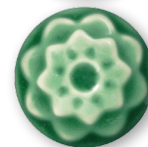
PC-28 Frosted Turquoise over C-47 Jade



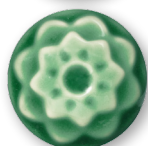
PC-29 Deep Olive Speckle over C-47 Jade



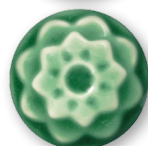
PC-30 Temmoku over C-47 Jade



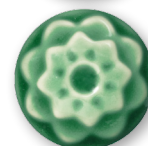
PC-33 Iron Lustre over C-47 Jade



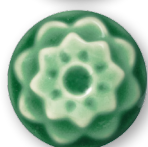
PC-34 Light Sepia over C-47 Jade



PC-35 Oil Spot over C-47 Jade



PC-37 Smoked Sienna over C-47 Jade



PC-39 Umber Float over C-47 Jade

Clay: AMACO® White Stoneware No. 11

C-47 Layering Notes: Brush on three layers of base coat. Brush on three layers of top coat. (Let dry between coats.)

Firing: Test tiles have been fired to Cone 6

over
C-47
Jade

www.LayeringAmacoGlazes.com



f Join the conversation
www.facebook.com/groups/potterschoiceex

Reorder No. 11541M



Color may vary between printed copies.



The Art & Creative Materials Institute CL (Caution Label) seal restricts this product from children under the age of 13. Older users must follow all cautionary labeling. Conforms to ASTM D-4236.

WARNING (PC-60): This product contains a chemical known to the State of California to cause birth defects or other reproductive harm.