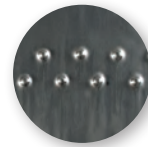


LAYERING
Potter's Choice

Celadon

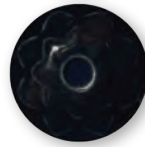
Cone 5/6



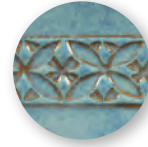
PC-1 Saturation Metallic® over C-1 Obsidian



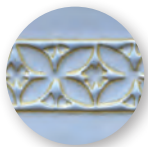
PC-4 Palladium over C-1 Obsidian



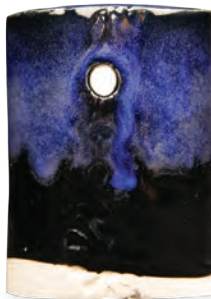
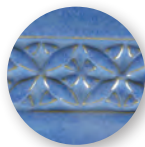
PC-12 Blue Midnight over C-1 Obsidian



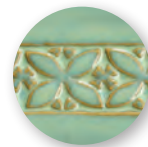
PC-20 Blue Rutile over C-1 Obsidian



PC-21 Arctic Blue over C-1 Obsidian



PC-23 Indigo Float over C-1 Obsidian



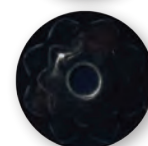
PC-25 Textured Turquoise over C-1 Obsidian



PC-27 Tourmaline over C-1 Obsidian



PC-29 Deep Olive Speckle over C-1 Obsidian



PC-30 Temmoku over C-1 Obsidian



PC-31 Oatmeal over C-1 Obsidian

Clay: AMACO® White Stoneware No. 11

C-1 Layering Notes: Brush on three layers of base coat. Brush on three layers of top coat. (Let dry between coats.)

Firing: Test tiles have been fired to Cone 6

over
C-1
Obsidian

www.LayeringAmacoGlazes.com



f Join the conversation
www.facebook.com/groups/potterschoiceex

Reorder No. 11967C



PC-32 Albany Slip Brown* over C-1 Obsidian



PC-34 Light Sepia over C-1 Obsidian



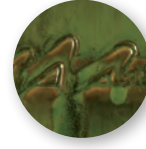
PC-36 Ironstone over C-1 Obsidian



PC-37 Smoked Sienna over C-1 Obsidian



PC-41 Vert Lustre over C-1 Obsidian



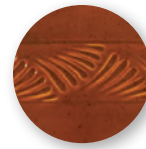
PC-42 Seaweed over C-1 Obsidian



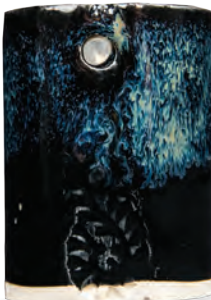
PC-46 Lustrous Jade over C-1 Obsidian



PC-48 Art Deco Green over C-1 Obsidian



PC-52 Deep Sienna Speckle over C-1 Obsidian



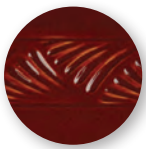
PC-53 Ancient Jasper over C-1 Obsidian



PC-55 Chun Plum over C-1 Obsidian



PC-57 Smokey Merlot over C-1 Obsidian



PC-59 Deep Firebrick over C-1 Obsidian



PC-61 Textured Amber over C-1 Obsidian



The Art & Creative Materials Institute AP (Approved Product) seal certifies this product to be safe for use by all ages. Conforms to ASTM D-4236.



The Art & Creative Materials Institute CL (Caution Label) seal restricts this product from children under the age of 13. Older users must follow all cautionary labeling. Conforms to ASTM D-4236.

WARNING (PC-1 and PC-32): These products contain a chemical known to the State of California to cause birth defects or other reproductive harm.

Color may vary between printed copies.