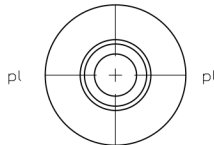
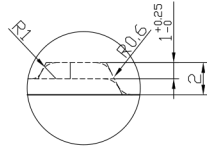
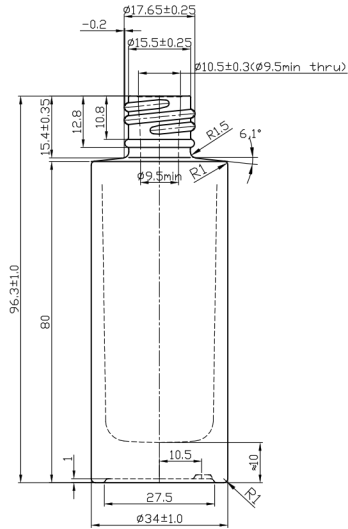


3.175
2.19
15.4 ± 0.35



37 ± 2 ml
95 ± 5 g

PRODUCT CODE: KIT030LQFCGP

DIMENSIONS: 34MM (w) X 124.7MM (h)

DOC TYPE: TECHNICAL DRAWING

MATERIAL: GLASS

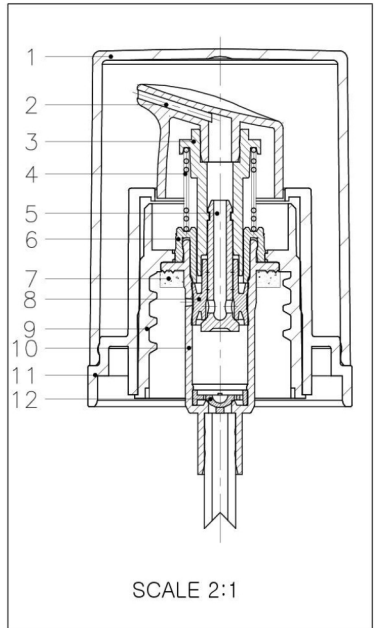
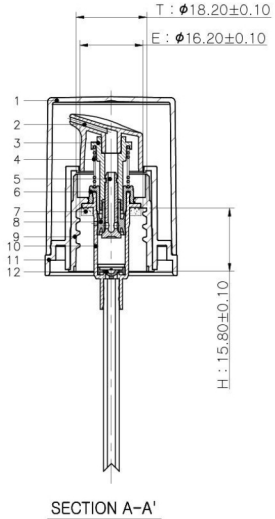
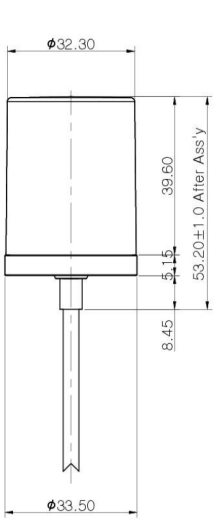
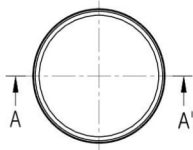
CAPACITY: 30ML

COLOR: CLEAR

DATE: 2/22/19

These drawings and specifications are the property of Instockpack and shall not be copied, reproduced, or used in any manner without the prior consent of Instockpack.

instockpack.



PRODUCT: PUMP

SHOULDER: ABS SHOULDER COLOR: GLOSS BLACK

ACTUATOR: PP ACTUATOR COLOR: GLOSS BLACK

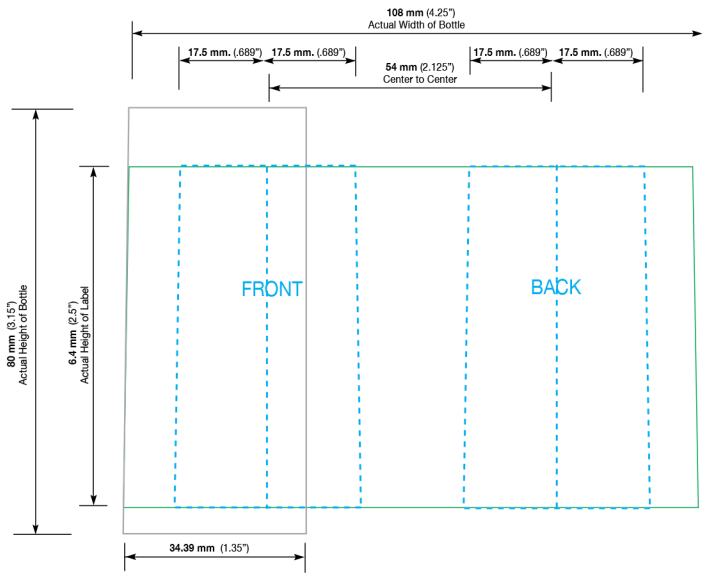
VISIBLE DIP TUBE LENGTH: 62MM

OVER CAP: PETG OVER CAP COLOR: GLOSS BLACK

DOC TYPE: TECHNICAL DRAWING DATE: 2/22/19



These drawings and specifications are the property of Instockpack and shall not be copied, reproduced, or used in any manner without the prior consent of Instockpack.



PRODUCT CODE: KIT030LQFCGP

30ml Liquid Foundation Clear Glass Bottle w/ Pump

DIE LINE TYPE: S11k Screen

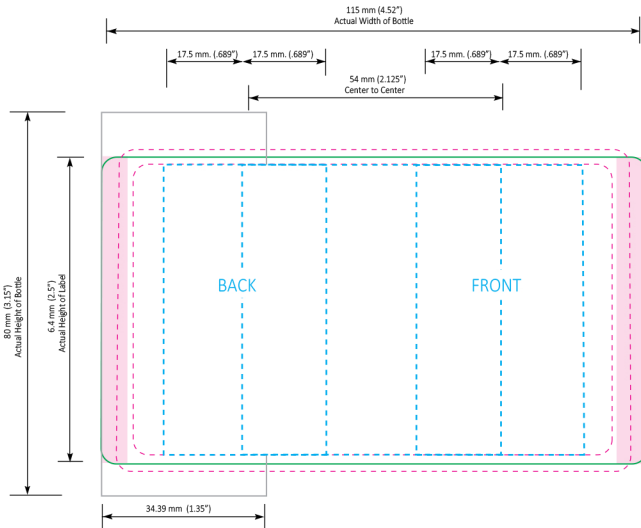
DATE: 06-JUN-2019

GENERAL INSTRUCTIONS:

Please include a PDF, list of colors, and convert text to outlines when submitting.

These drawings and specifications are the property of Instockpack and shall not be copied, reproduced, or used in any manner without the prior consent of Instockpack.

instockpack.



PRODUCT CODE: KIT030LQFCGP

30ml Liquid Foundation Clear Glass Bottle with Pump

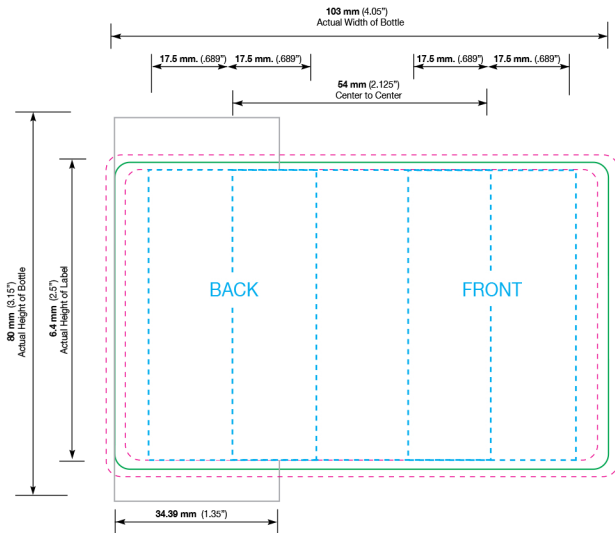
DIE LINE TYPE: Label (with overlap)

DATE: 06-JUN-2019

GENERAL INSTRUCTIONS:

Please include a PDF, list of colors, and convert text to outlines when submitting.





PRODUCT CODE: KIT030LQFCGP

30ml Liquid Foundation Clear Glass Bottle with Pump

DIE LINE TYPE: Label (with gap)

DATE: 06-JUN-2019

GENERAL INSTRUCTIONS:

Please include a PDF, list of colors, and convert text to outlines when submitting.

These drawings and specifications are the property of Instockpack and shall not be copied, reproduced, or used in any manner without the prior consent of Instockpack.

