

PRODUCT CODE: KIT015LQFFGD

DIMENSIONS: 34MM (w) X 96.55MM (h)

DOC TYPE: TECHNICAL DRAWING

MATERIAL: GLASS

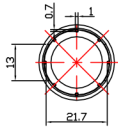
CAPACITY: 15ML

COLOR: FROSTED

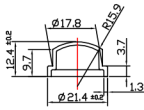
DATE: 2/22/19

These drawings and specifications are the property of Instockpack and shall not be copied, reproduced, or used in any manner without the prior consent of Instockpack.

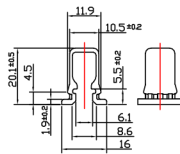
**instockpack.**



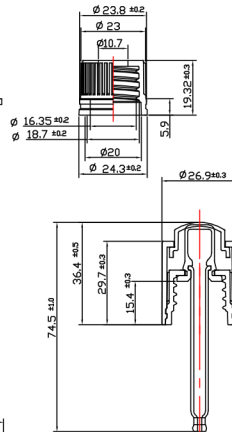
①



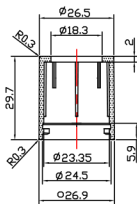
②



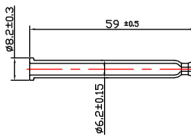
③



④



⑤



PRODUCT : DROPPER

DIMENSIONS: 26.9MM (w) X 74.5MM (h)

DROPPER TYPE: PUSH BUTTON      PIPPET LENGTH: 59MM

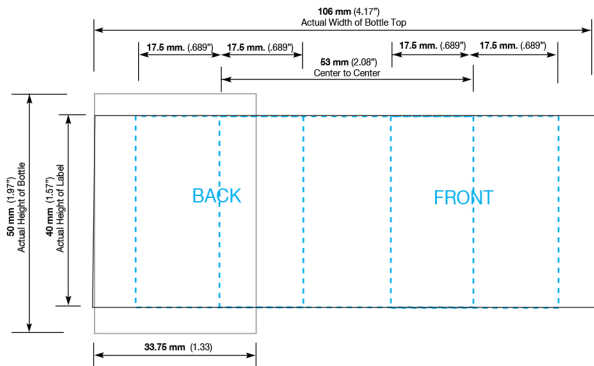
DROPPER COLOR: GLOSS BLACK

CLOSURE TYPE: SCREW ON      TEETH: WHITE SILICONE

DOC TYPE: TECHNICAL DRAWING      DATE: 2/22/19

**instockpack.**

These drawings and specifications are the property of Instockpack and shall not be copied, reproduced, or used in any manner without the prior consent of Instockpack.



PRODUCT CODE: KIT015LQFFGD

15ml Liquid Foundation Frosted Glass Dropper Bottle

DIE LINE TYPE: Silk Screen

DATE: 06-JUN-2019

GENERAL INSTRUCTIONS:

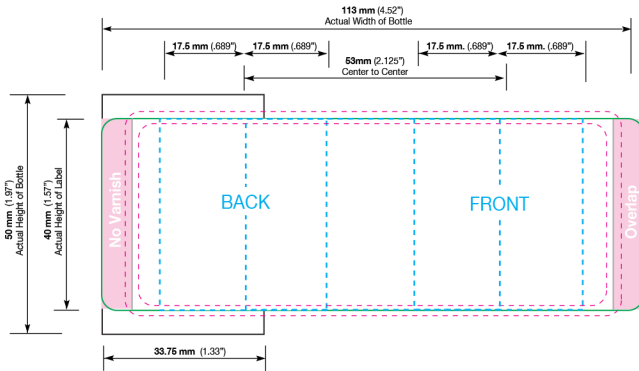
Please include a PDF, list of colors, and convert text to outlines when submitting.

These drawings and specifications are the property of Instockpack and shall not be copied, reproduced, or used in any manner without the prior consent of Instockpack.

instockpack.

← Unwind Direction

- Label Area
- ⋯ Live copy area
- ⋯ 1/16" bleed for die cut
- .25" No Varnish



PRODUCT CODE: KIT015LQFFGD

15ml Liquid Foundation Frosted Glass Dropper Bottle

DIE LINE TYPE: Label (with overlap)

DATE: 06-JUN-2019

GENERAL INSTRUCTIONS:

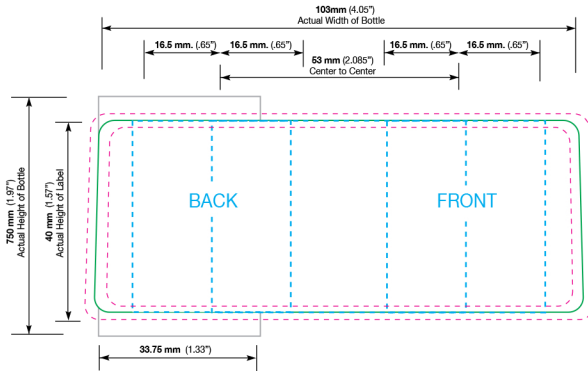
Please include a PDF, list of colors, and convert text to outlines when submitting.

instockpack.

These drawings and specifications are the property of Instockpack and shall not be copied, reproduced, or used in any manner without the prior consent of Instockpack.

← Unwind Direction

○ Label Area    ○ Live copy area    ○ 1/16" bleed for die cut



PRODUCT CODE: KIT015LQFFGD

15ml Liquid Foundation Frosted Glass Dropper Bottle

DIE LINE TYPE: Label (with gap)

DATE: 06-JUN-2019

GENERAL INSTRUCTIONS:

Please include a PDF, list of colors, and convert text to outlines when submitting.



These drawings and specifications are the property of Instockpack and shall not be copied, reproduced, or used in any manner without the prior consent of Instockpack.